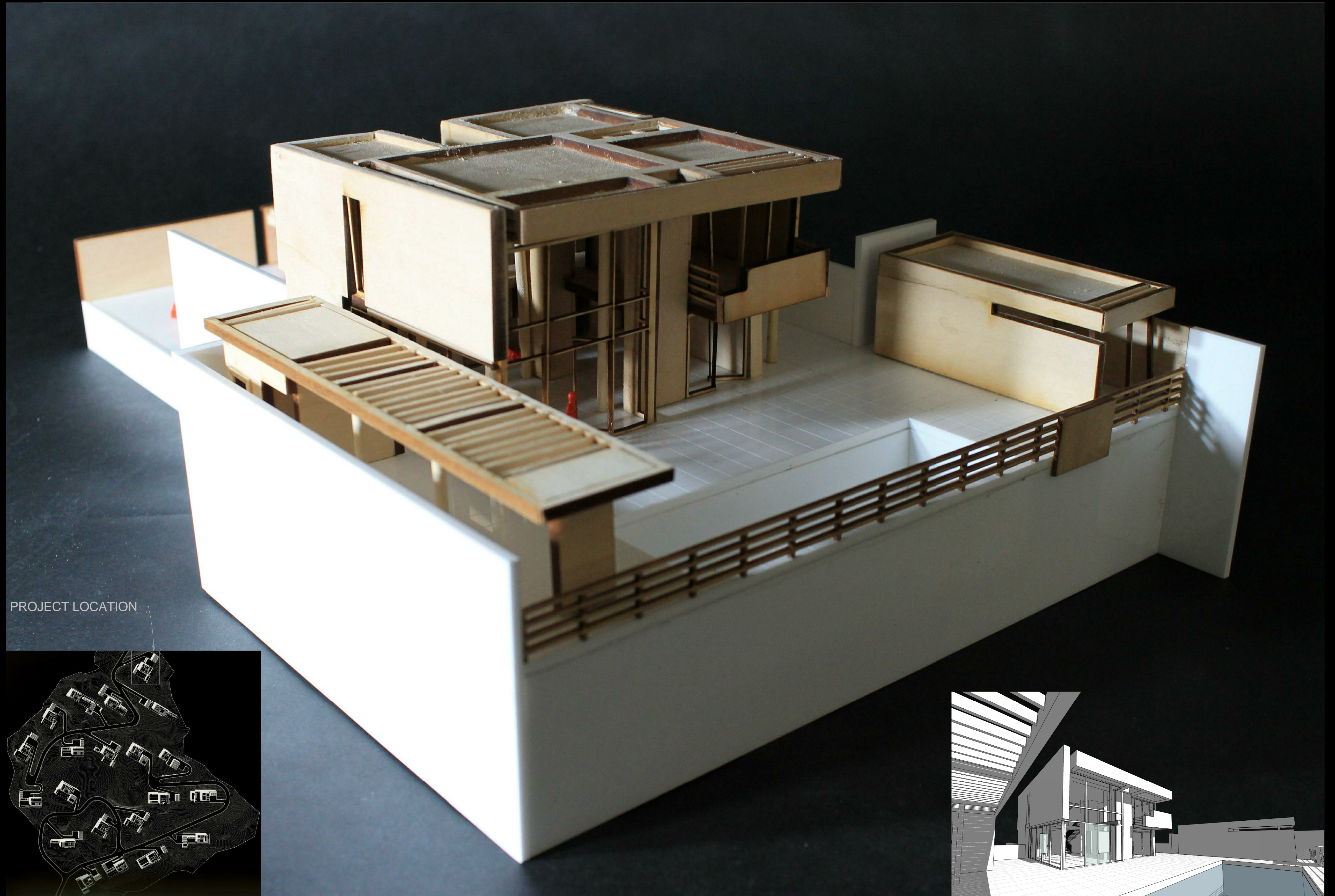


RICHARD MEIER

BODRUM HOUSE #4
YALIKAVAK, TURKEY
2007-2010

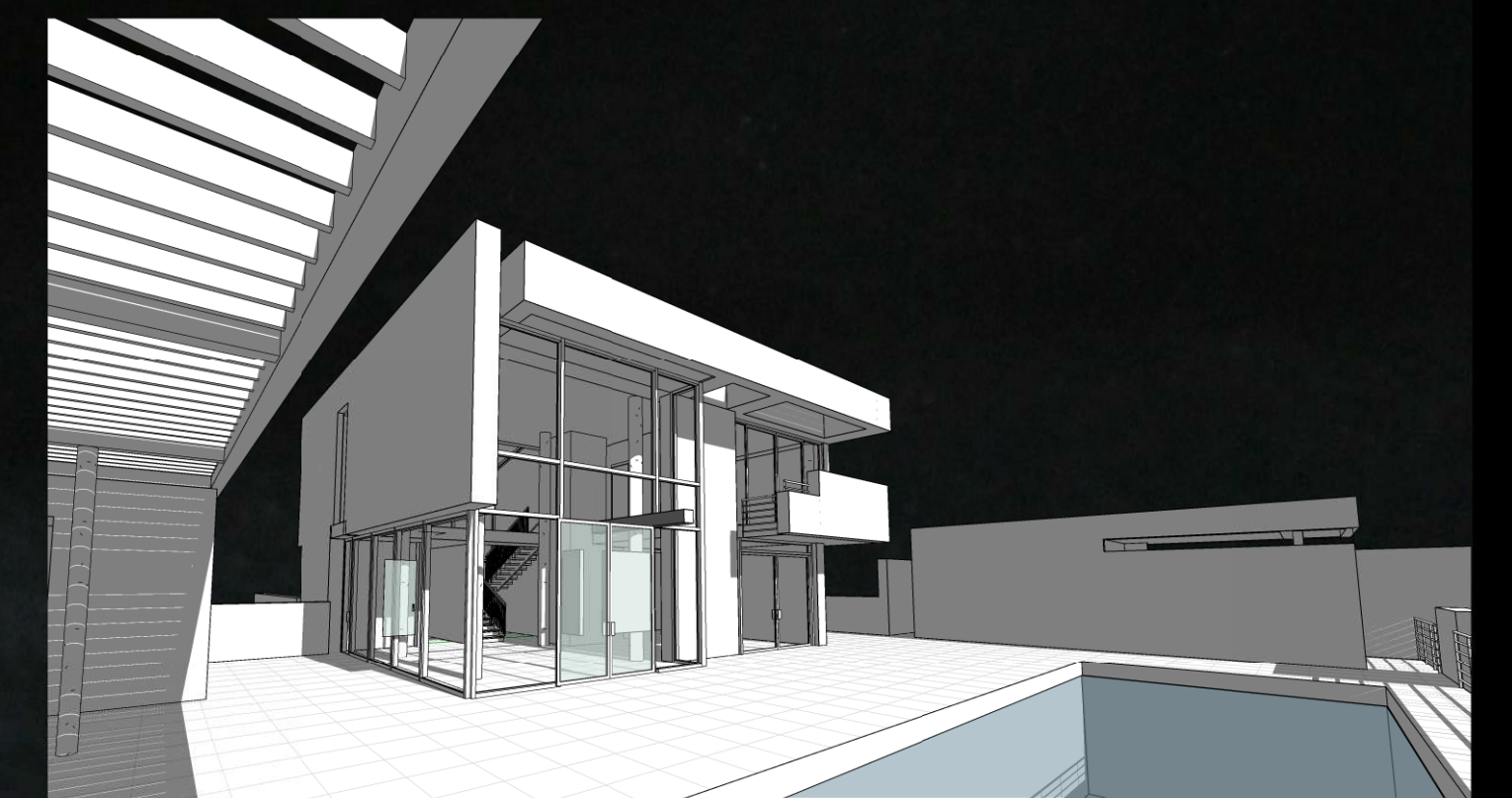
RICHARD MEIER DESIGNED A VILLAGE COMPOSING TWENTY-ONE HOUSES OUTSIDE THE VILLAGE OF YALIKAVAK ON TURKEY'S BODRUM PENINSULA. EACH SITE IS ONE ACRE BIG, AND HAS STEEP HILLSIDES WHICH OVERLOOK THE YALIKAVAK BAY. RICHARD MEIER DESIGNED FIVE PROTOTYPE HOUSES, EACH HAVING APPROXIMATELY THREE-HUNDRED AND THIRTY SQUARE METERS PLUS AN ADDITIONAL FORTY SQUARE METER GUEST HOUSE, A DETACHED GARAGE, POOL AND CABANA. EACH HOUSE HAS A DOUBLE HEIGHT LIVING ROOM, ALONG WITH A DINING ROOM, KITCHEN AND POWDER ROOM ON THE GROUND FLOOR. ON THE SECOND LEVEL THERE ARE THREE BEDROOMS, WHILE THE BASEMENT LEVEL HAS A MEDIA ROOM, LANDRY ROOM AND THREE STAFF ROOMS. RICHARD MEIER ALSO PLACES SKYLIGHTS IN THE ROOF AND CREATES A FIFTH FACADE AND UTILIZES NATURAL LIGHT. LE CORBUSIER WAS A GREAT INFLUENCE ON HIS DESIGN.



PROJECT LOCATION



1/8" = 1'-0" SCALED [BASS WOOD AND ACRYLIC SHEET] MODEL



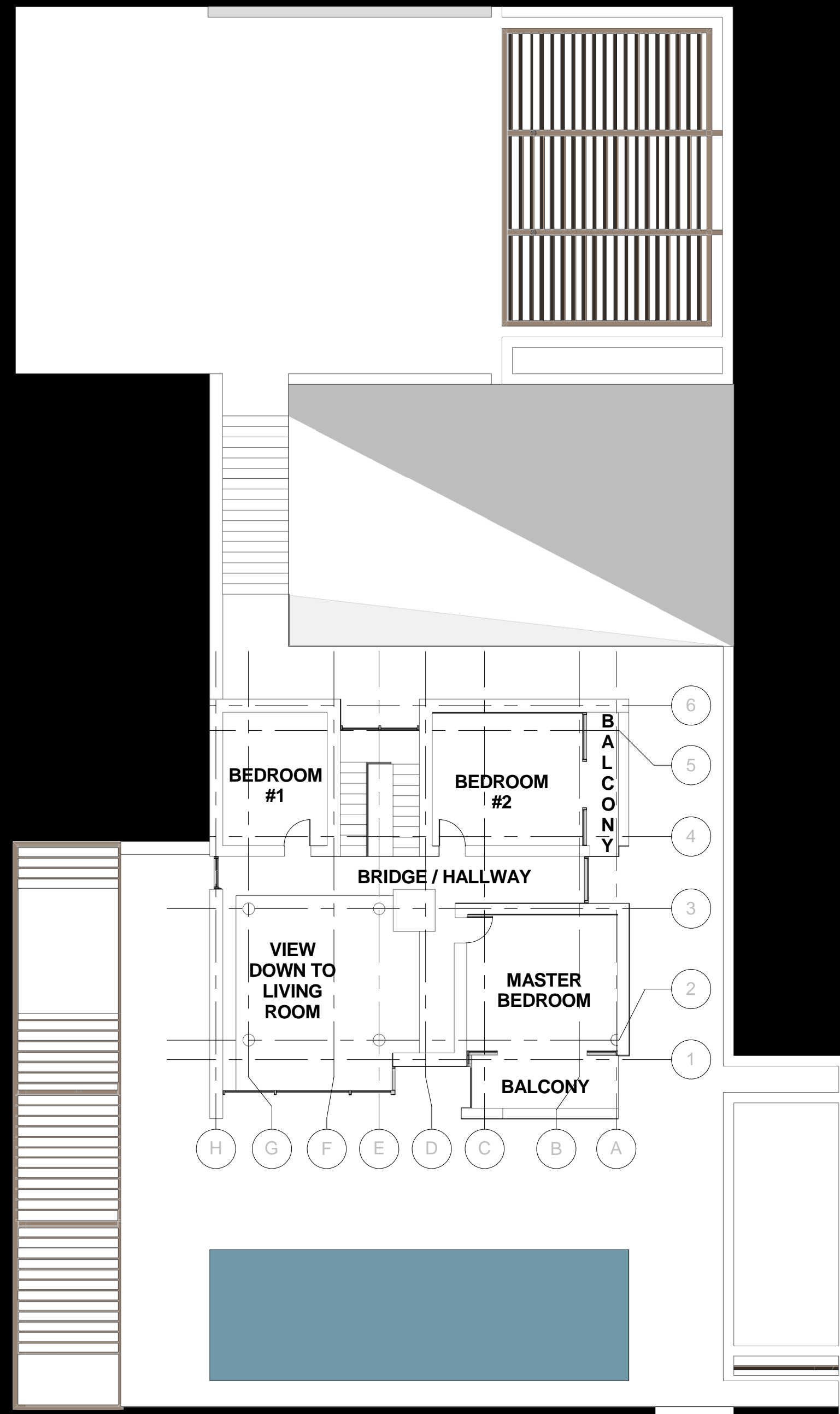
COMPOSITE REVIT RENDERING IMAGE OF THE BUILDING EXTERIOR VIEWING FROM THE POOL

GLENDALE COMMUNITY COLLEGE
ARCH 120
STUDENT: MANUEL OROZCO

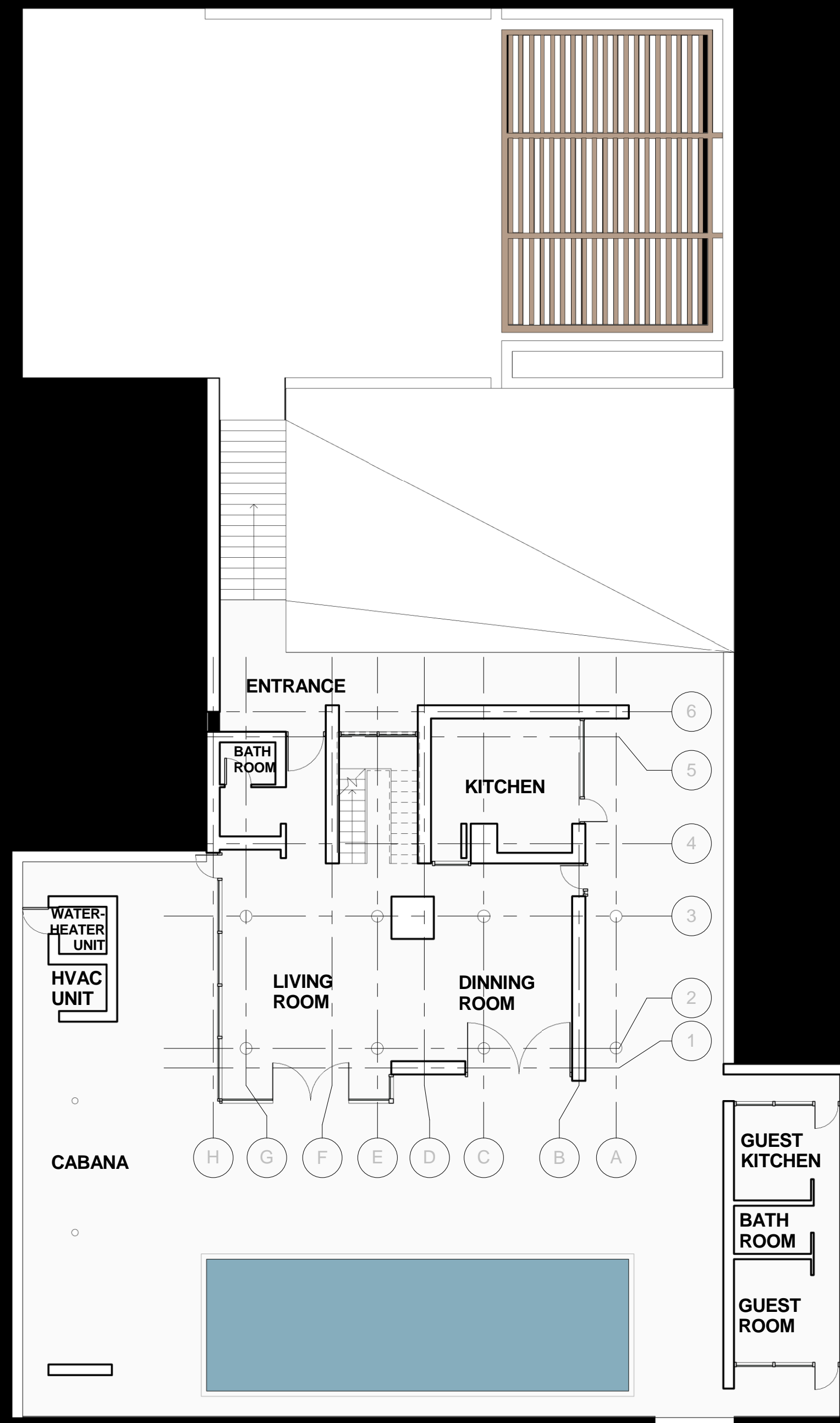
FALL 2011

CASE STUDY HOUSE
BODRUM #4

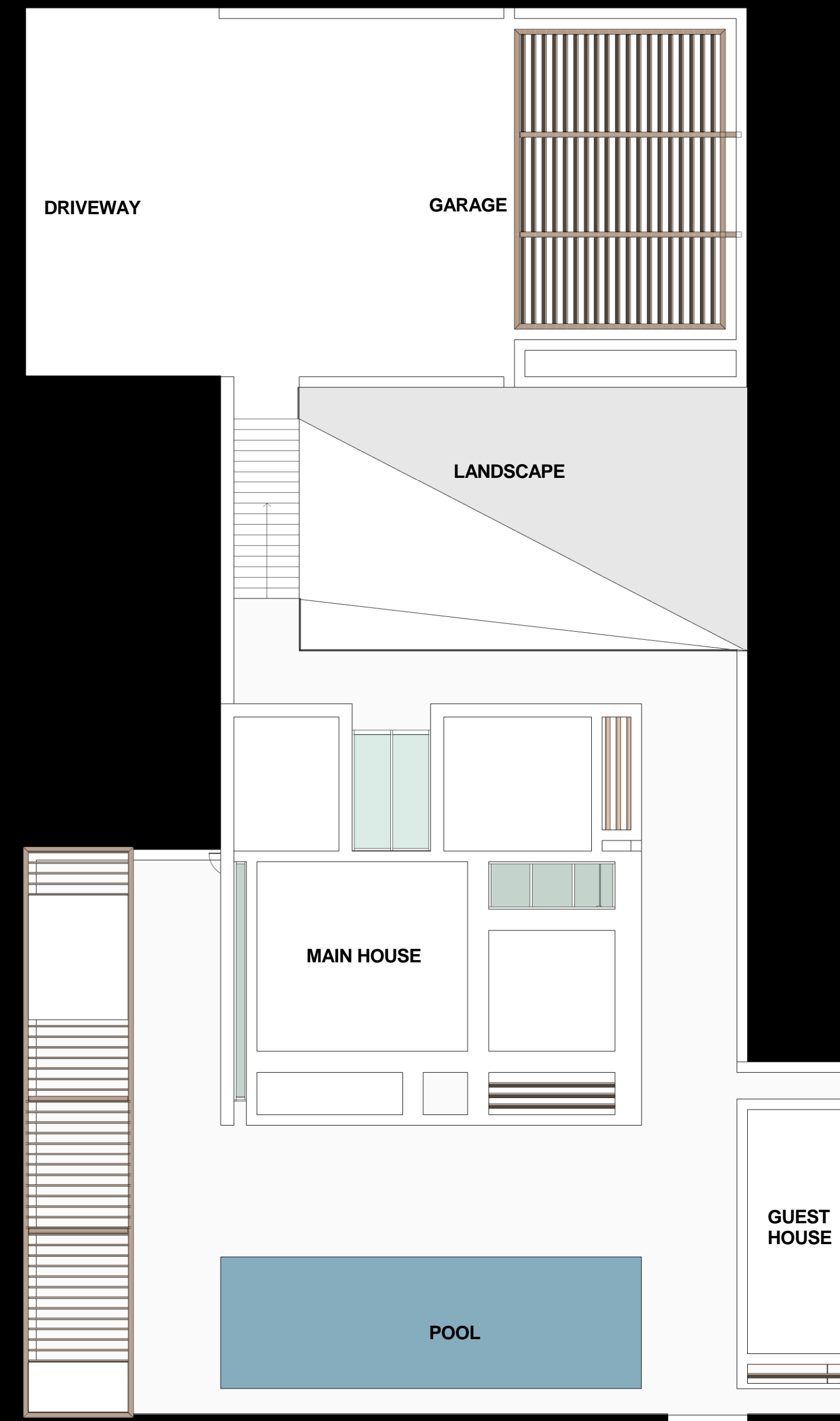
ARCHITECT pg
RICHARD MEIER 01



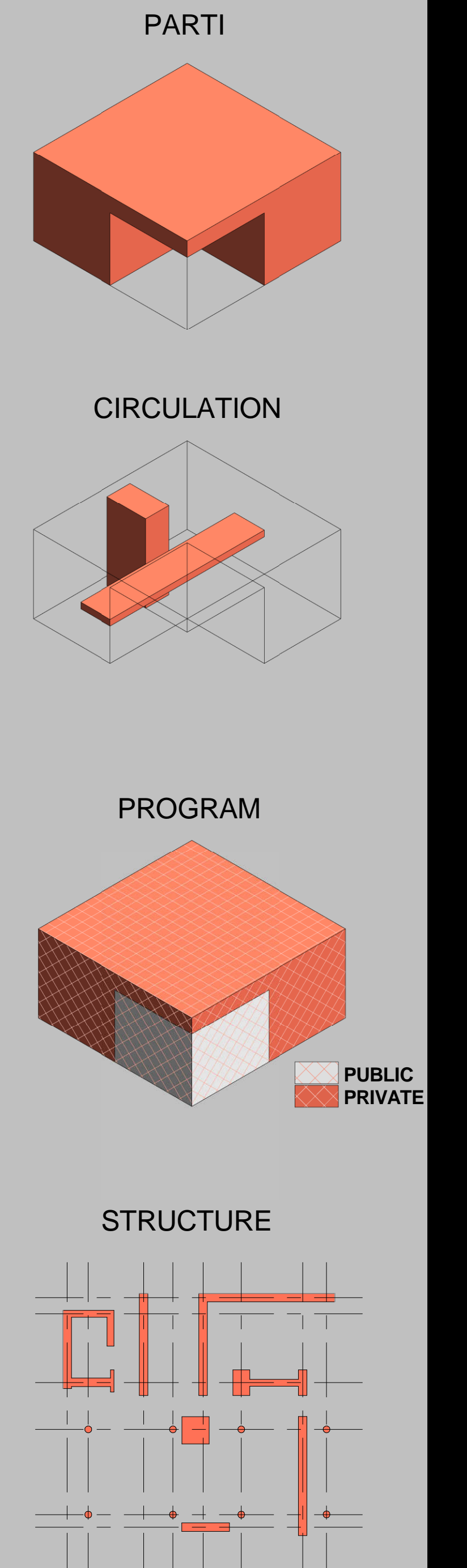
SECOND FLOOR
 0' 5' 10' 20' 40'

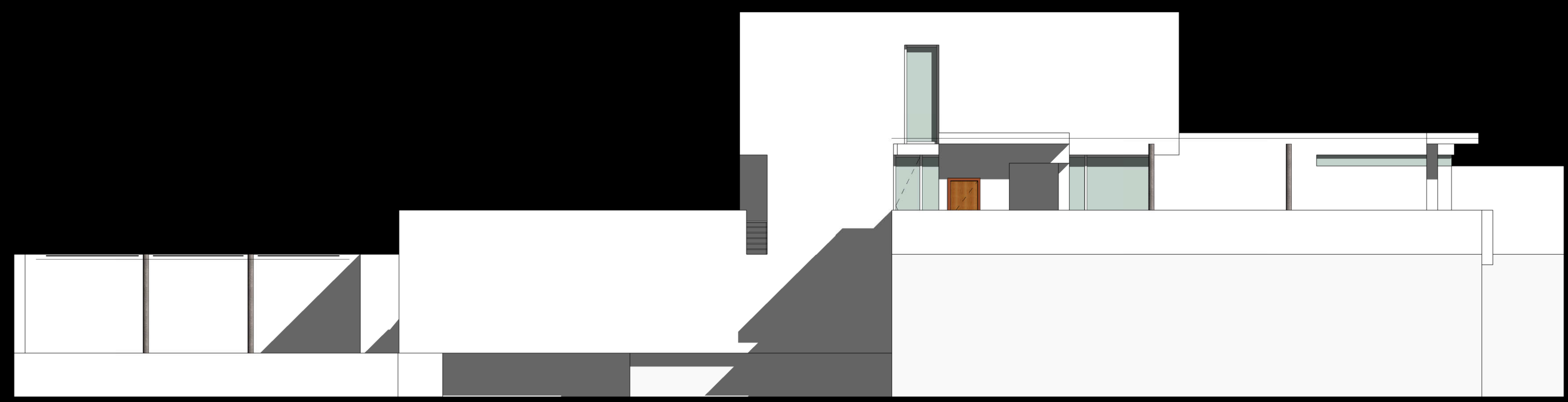


FIRST FLOOR
 0' 5' 10' 20' 40'



SITE
 0' 5' 10' 20' 40'

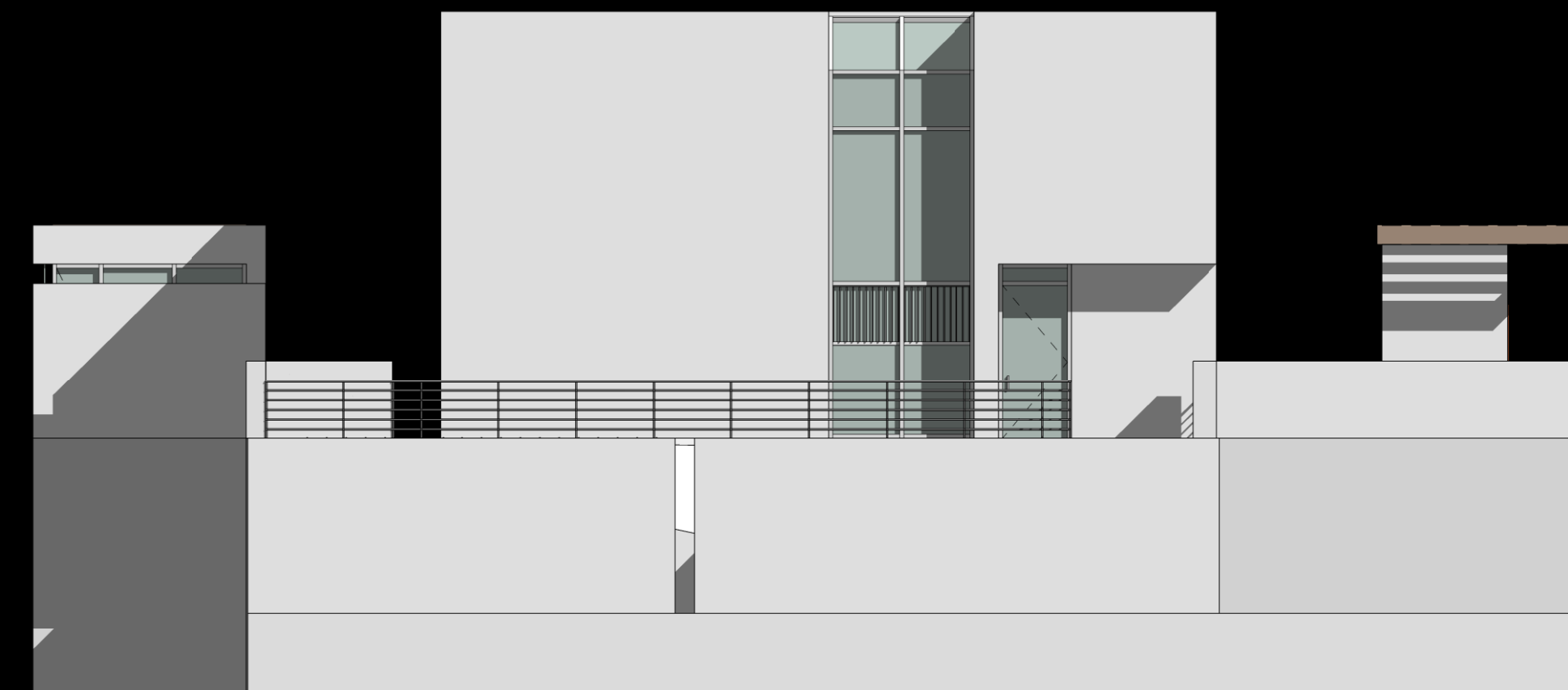




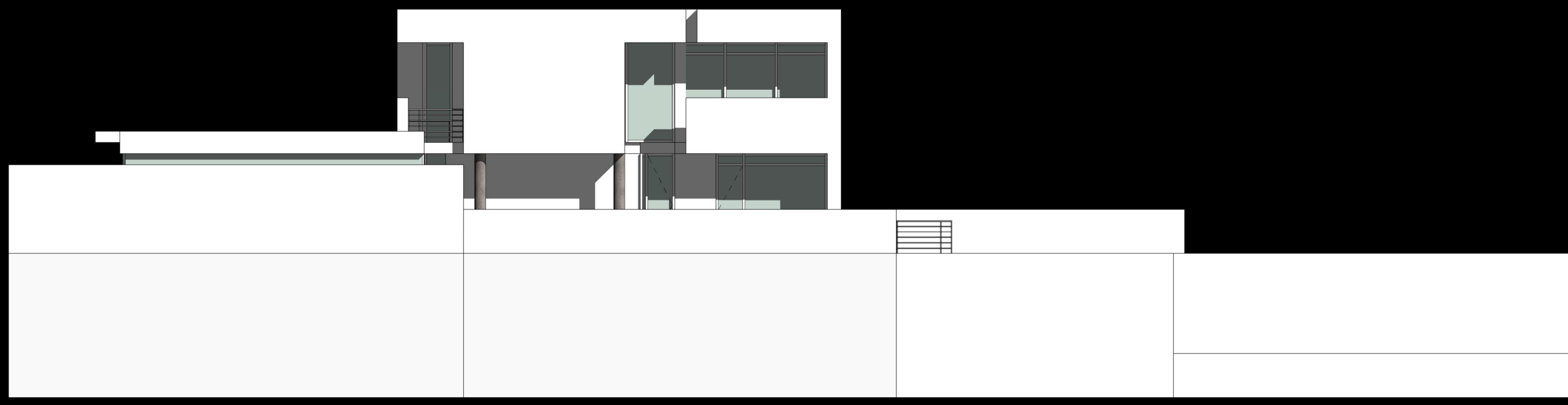
WEST
0' 5' 10' 20' 40'



SOUTH
0' 5' 10' 20' 40'



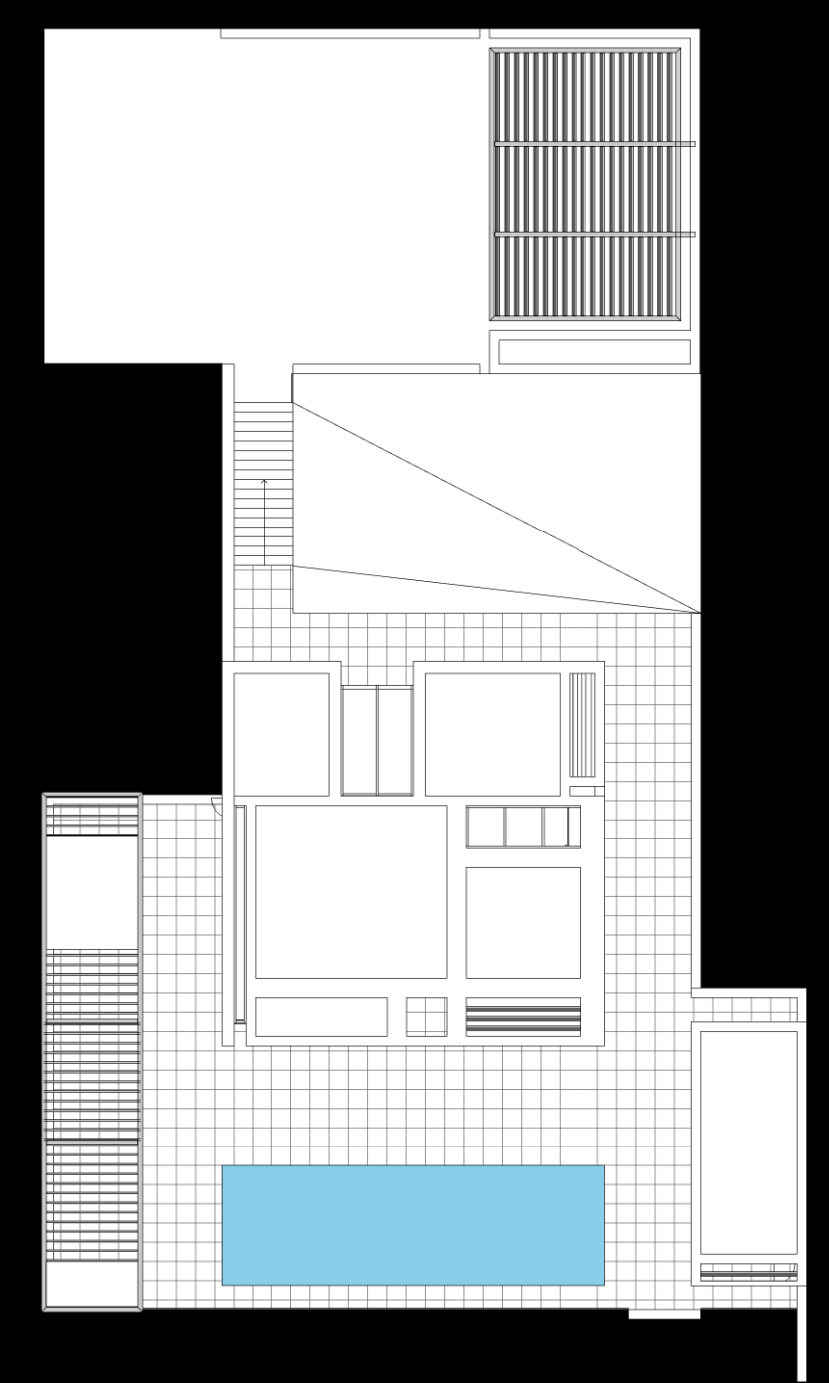
NORTH
0' 5' 10' 20' 40'



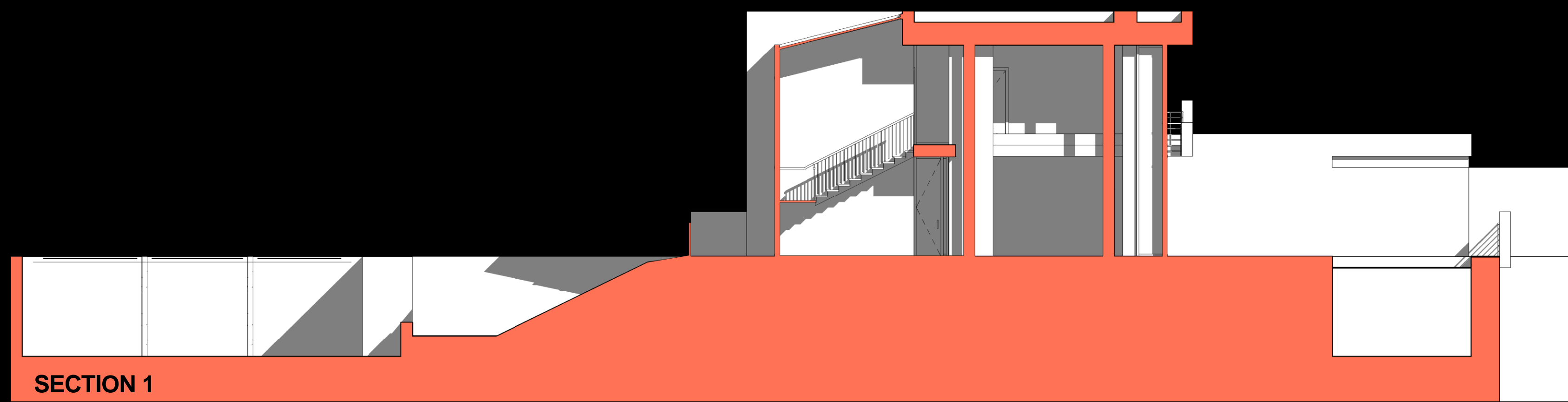
EAST
0' 5' 10' 20' 40'



1/8" = 1'-0" SCALED [BASS WOOD AND ACRYLIC SHEET] MODEL



KEY PLAN
0' 10' 20' 40'



SECTION 1



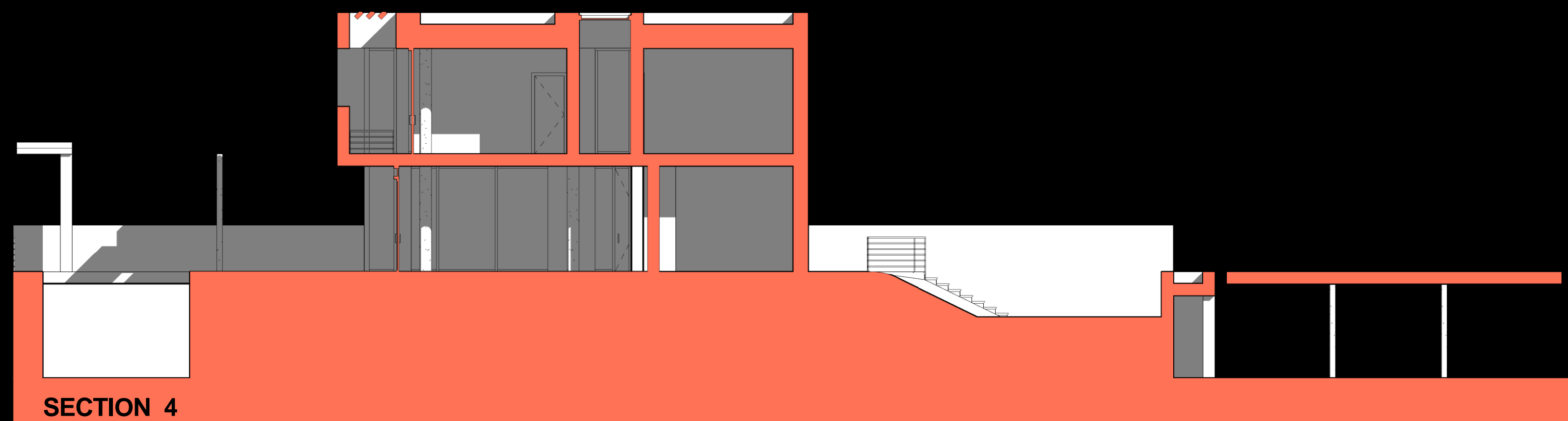
1/8" = 1'-0" SCALED [BASS WOOD AND ACRYLIC SHEET] MODEL
INTERIOR SHOT



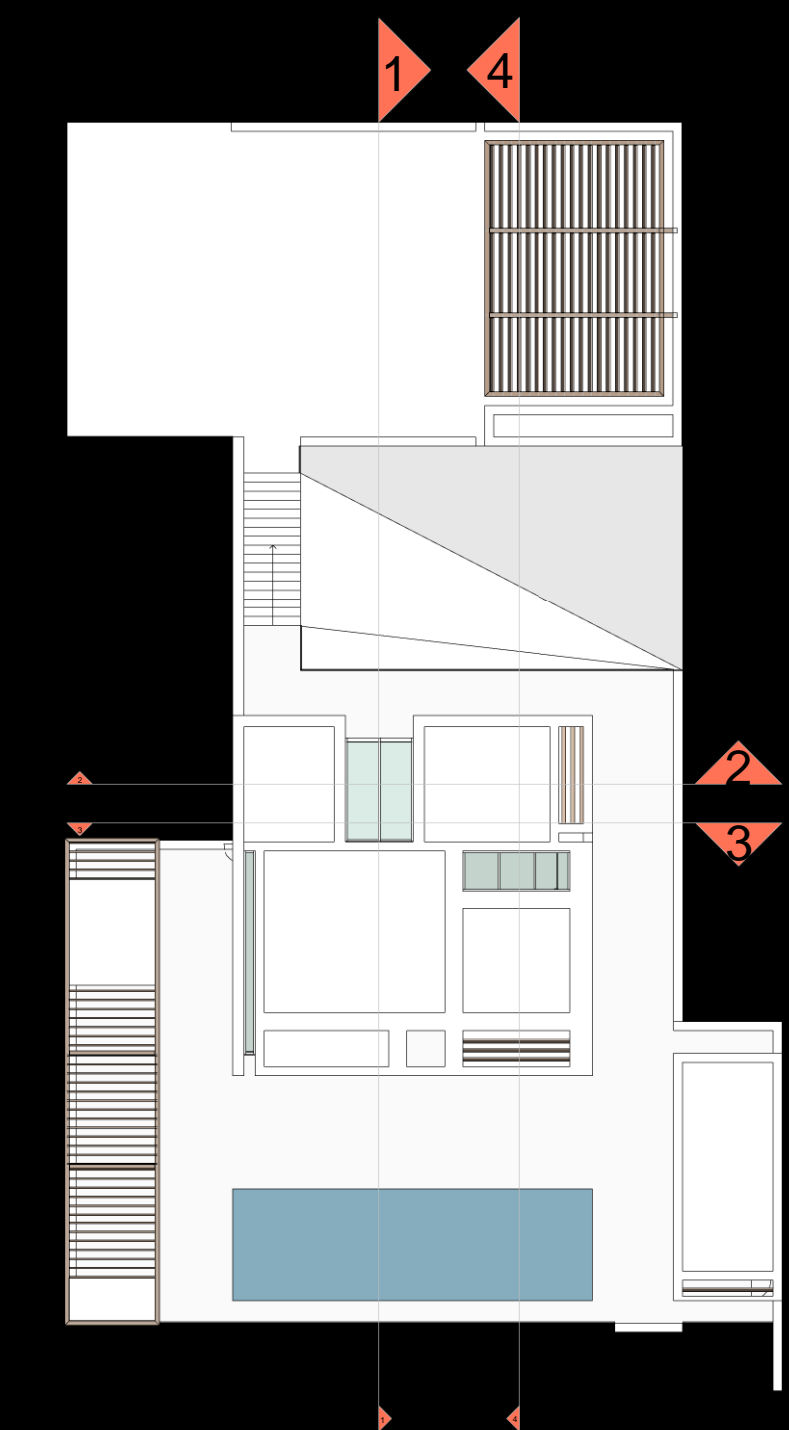
SECTION 3

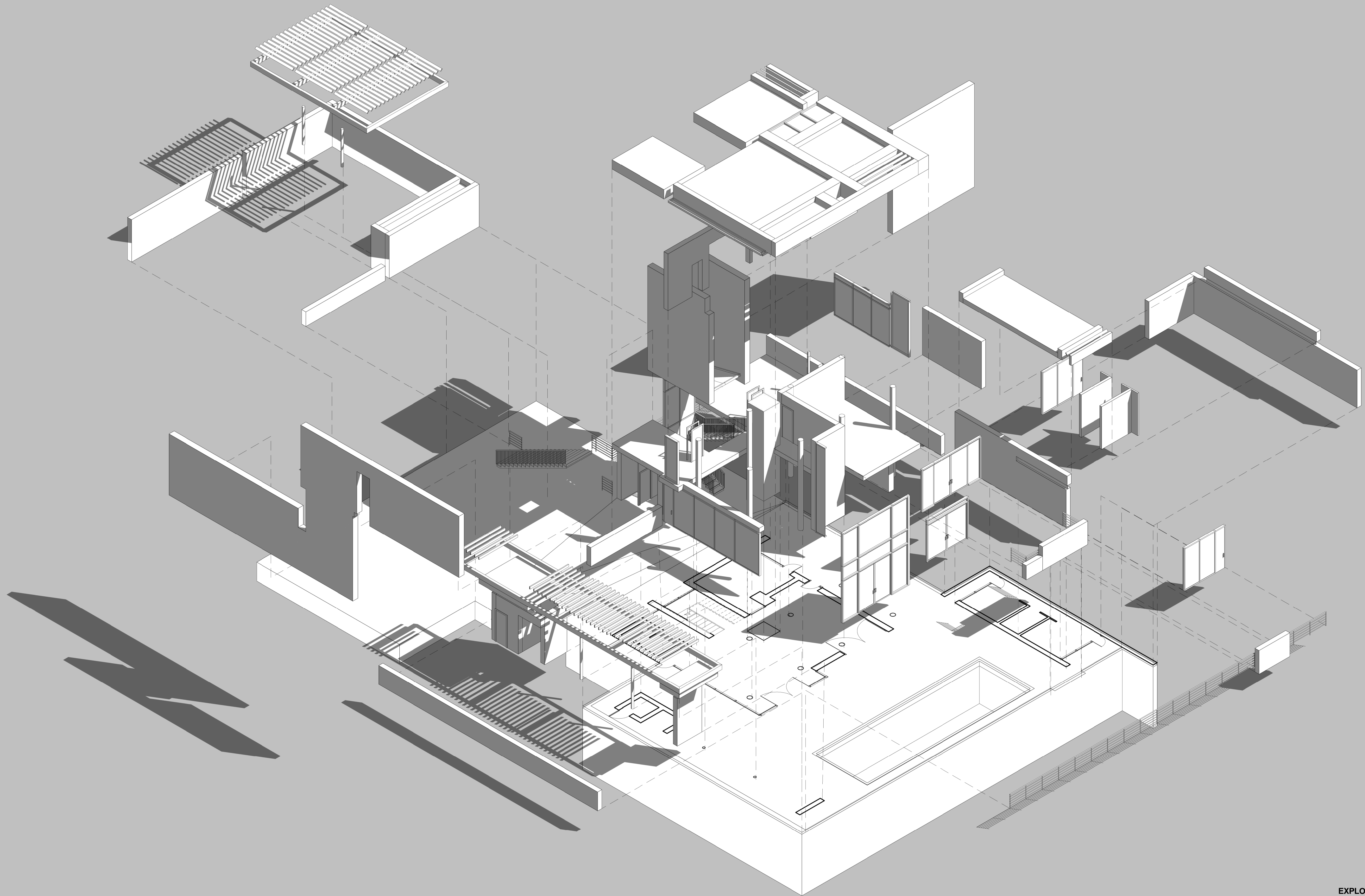


SECTION 2



SECTION 4





EXPLODED VIEW DRAWING IN
AUTOCAD INTEGRATED WITH REVIT

GLENDALE COMMUNITY COLLEGE
ARCH 120 FALL 2011
STUDENT: MANUEL OROZCO

CASE STUDY HOUSE
BODRUM #4

ARCHITECT pg
RICHARD MEIER 05



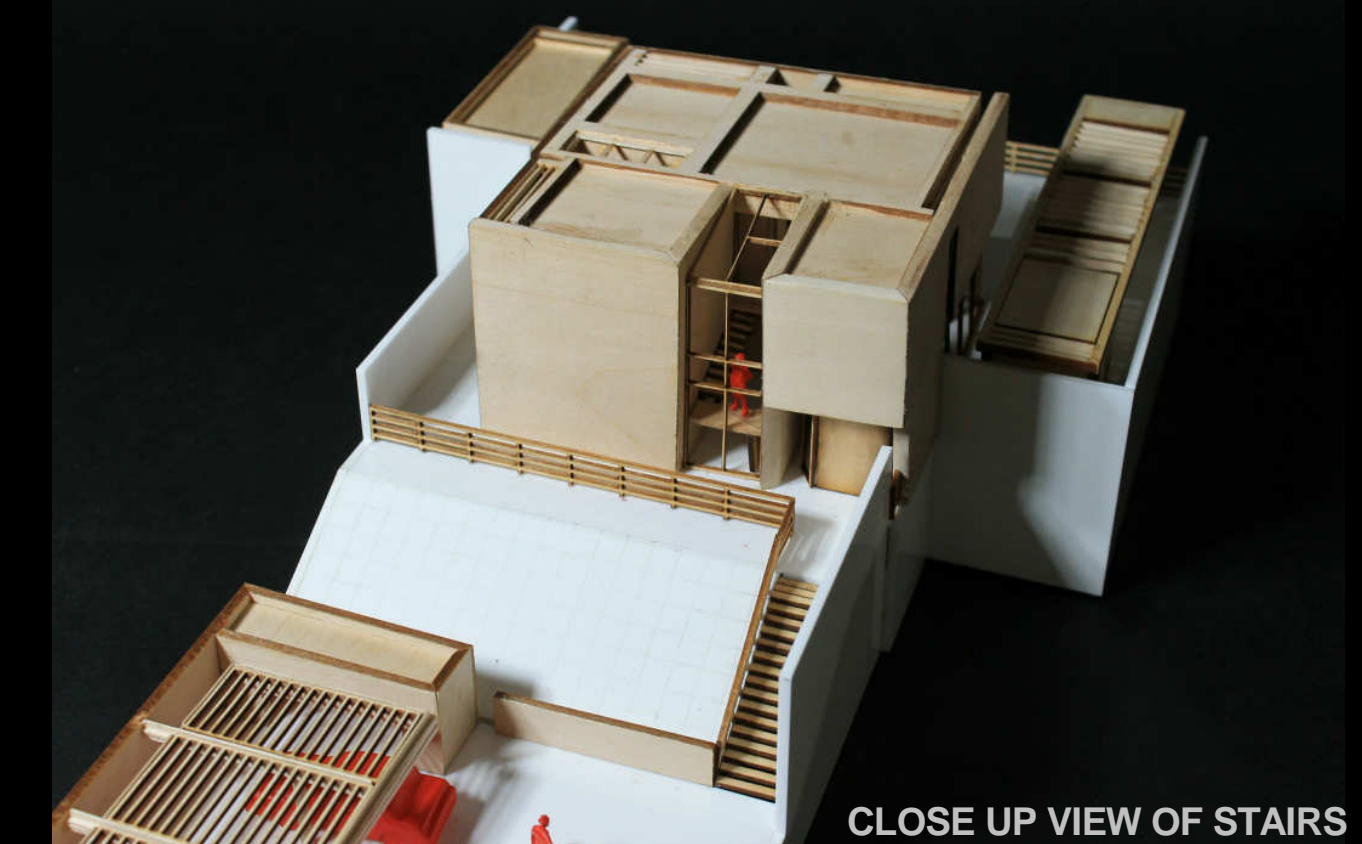
LOOKING IN THE NORTH EAST DIRECTION FROM POOL



SOUTHWEST DIRECTION



LOOKING IN THE NORTHEAST DIRECTION



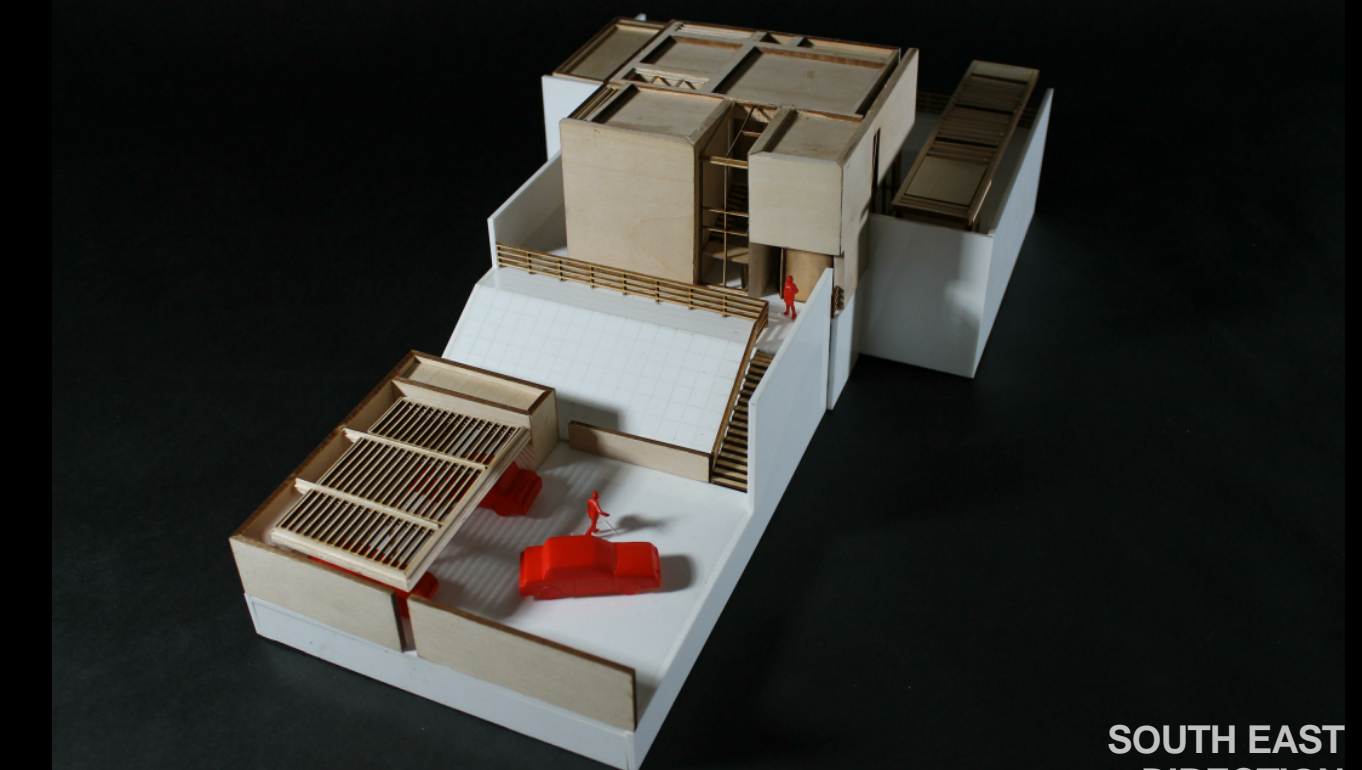
CLOSE UP VIEW OF STAIRS



SOUTH DIRECTION



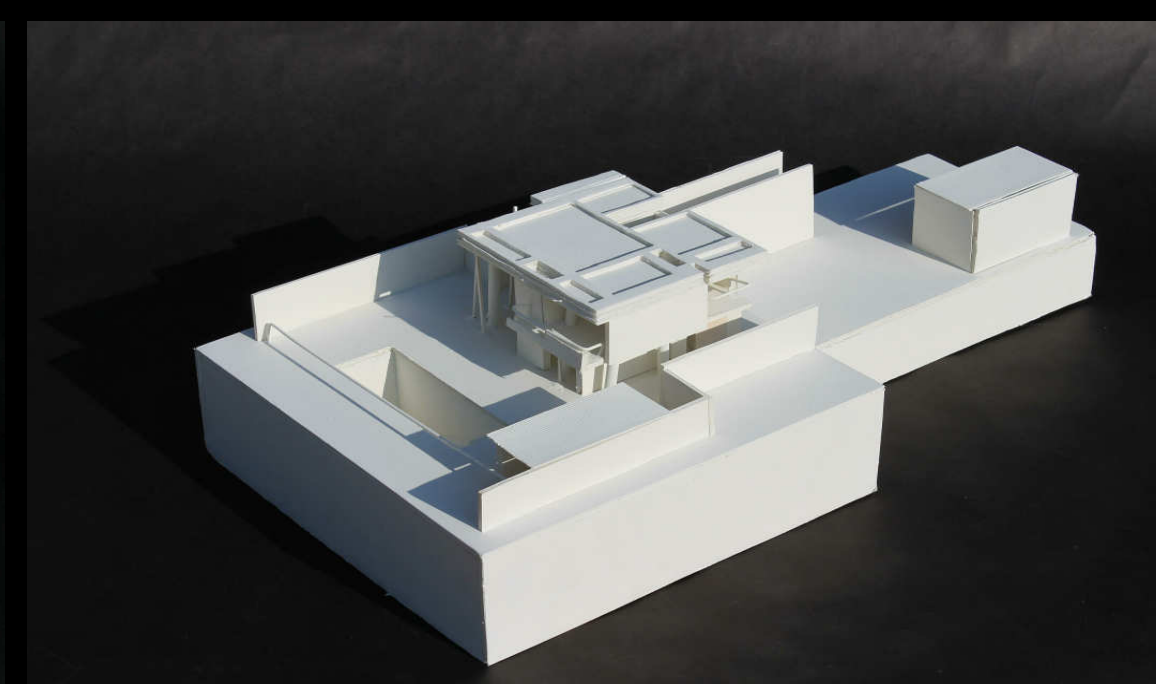
NORTHWEST DIRECTION



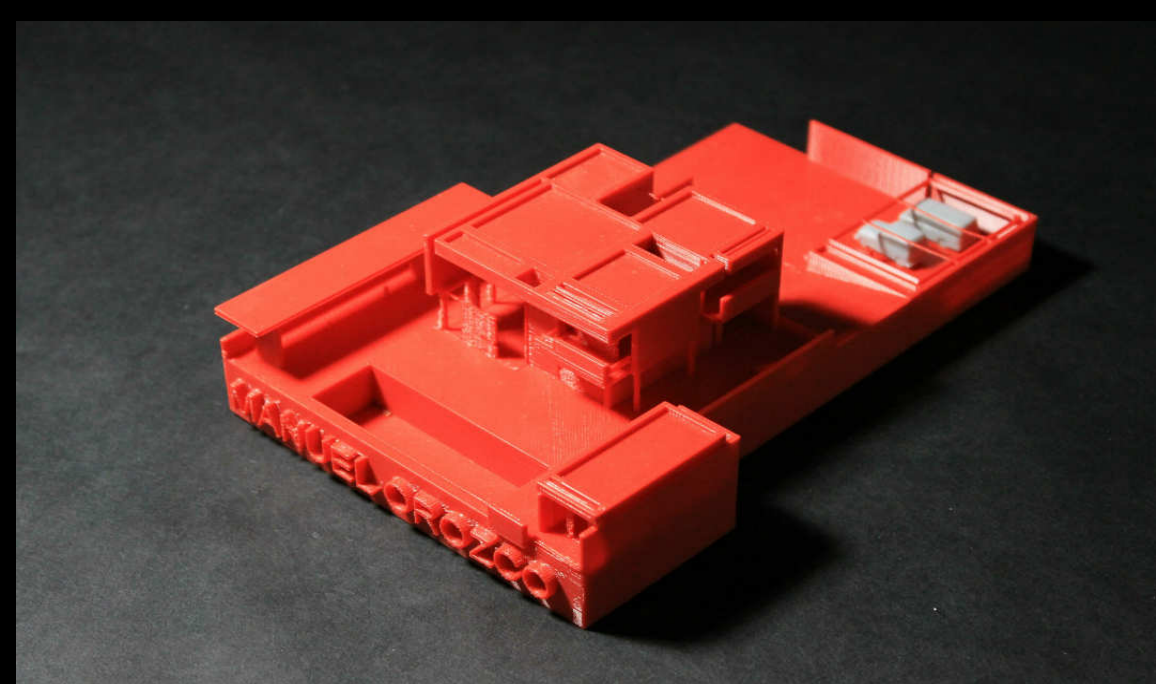
SOUTH EAST DIRECTION



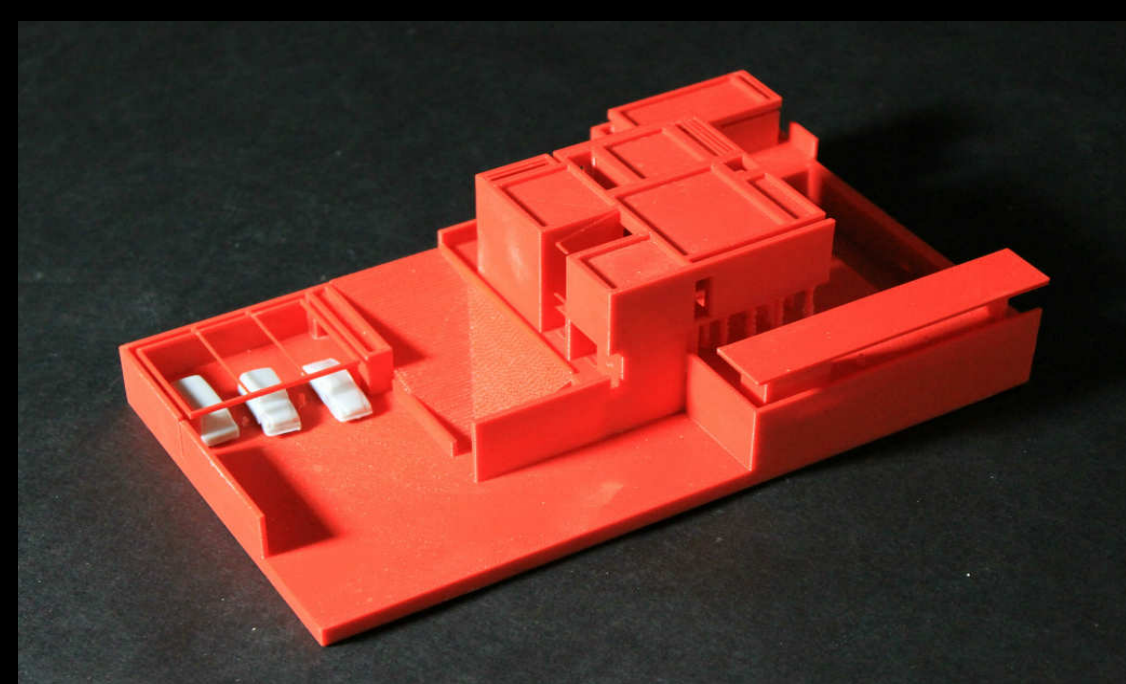
1/8"=1'-0" SCALE [WHITE FOAM CORE] MODEL LOOKING IN THE NORTH WEST DIRECTION



LOOKING IN THE NORTH WEST DIRECTION (PHOTOGRAPHED OUTSIDE)



1/16"=1'-0" SCALED [RED ABS PLASTIC] RAPID PROTOTYPE MODEL LOOKING IN THE NORTHWEST DIRECTION



LOOKING IN THE SOUTHEAST DIRECTION



INTERIOR SHOT WITH LIGHT ABOVE