



Glendale Community College, CA

**Brandin Babin's
Porfolio 2010-2013**

Glendale Community College

Table of Contents

Metal Crafter's House



1

Saltzman House Case Study



10

Little Tokyo



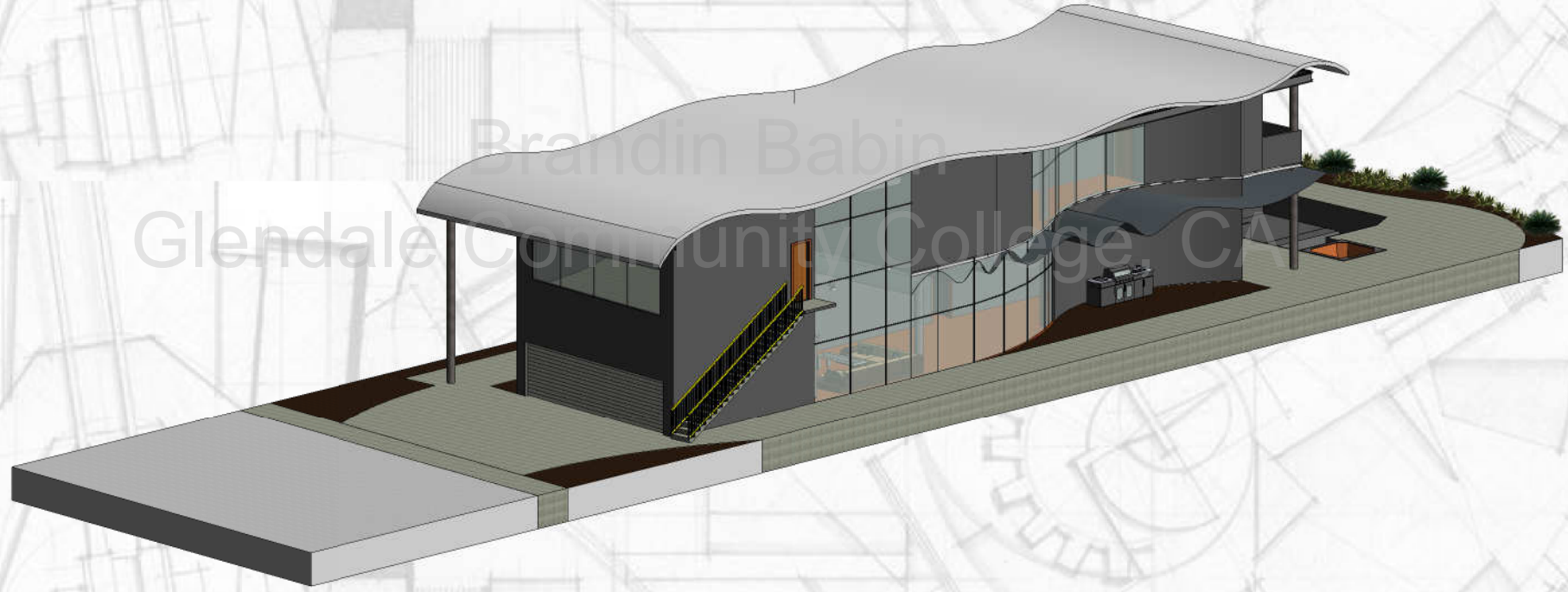
16

L-Bend Case Study



20

Metal crafter's House



Brandin Babin
Glendale Community College, CA

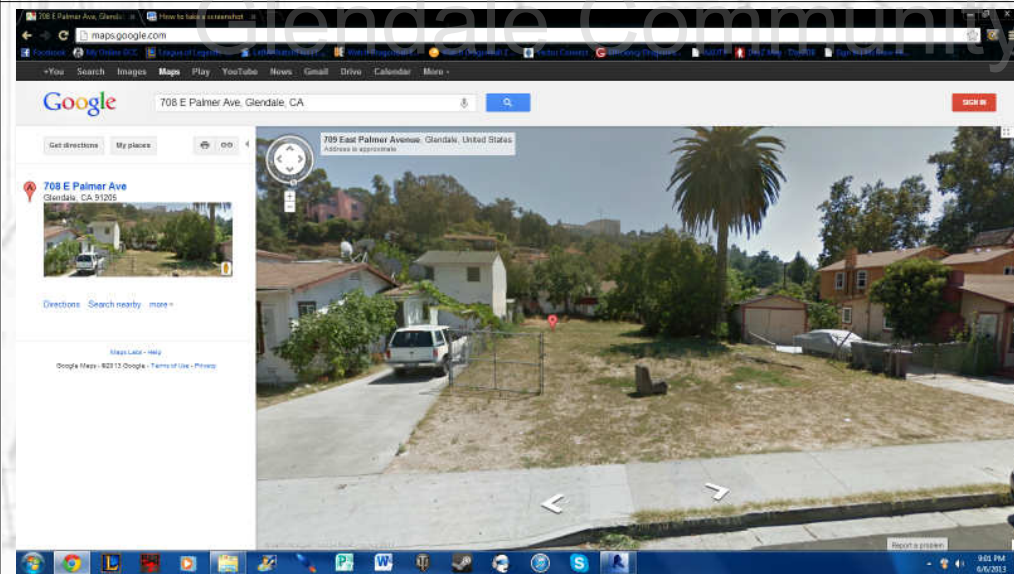
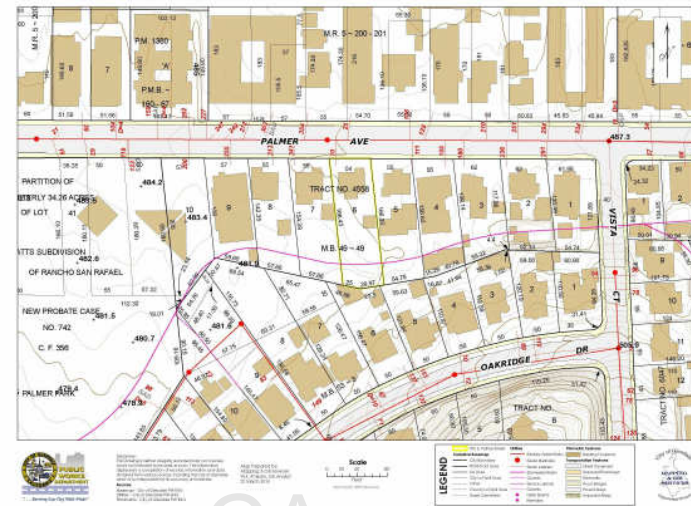
ADDRESS: 708 E. Palmer Avenue,
Glendale, CA 91205

AREA: The site is located in a densely populated residential area with both single family homes and apartment complexes in the heart of Glendale, CA. Local amenities include Palmer Park, shopping and restaurants.

CULTURAL GEOGRAPHY: Glendale is considered a multi-ethnic community consisting of mainly Armenians, Caucasians, African Americans, and Hispanics

PHYSICAL GEOGRAPHY: Glendale a suburb, located in the greater Los Angeles area about 10 minutes from downtown Los Angeles. It has a balmy Mediterranean climate which gives it great weather year round. Glendale has numerous hills and this site is located at the base of one of these hills

SITE MAP 708 E. PALMER AVENUE - GLENDALE, CA





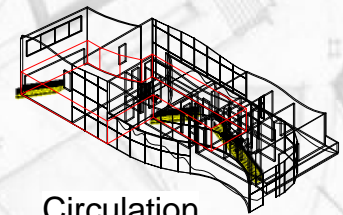
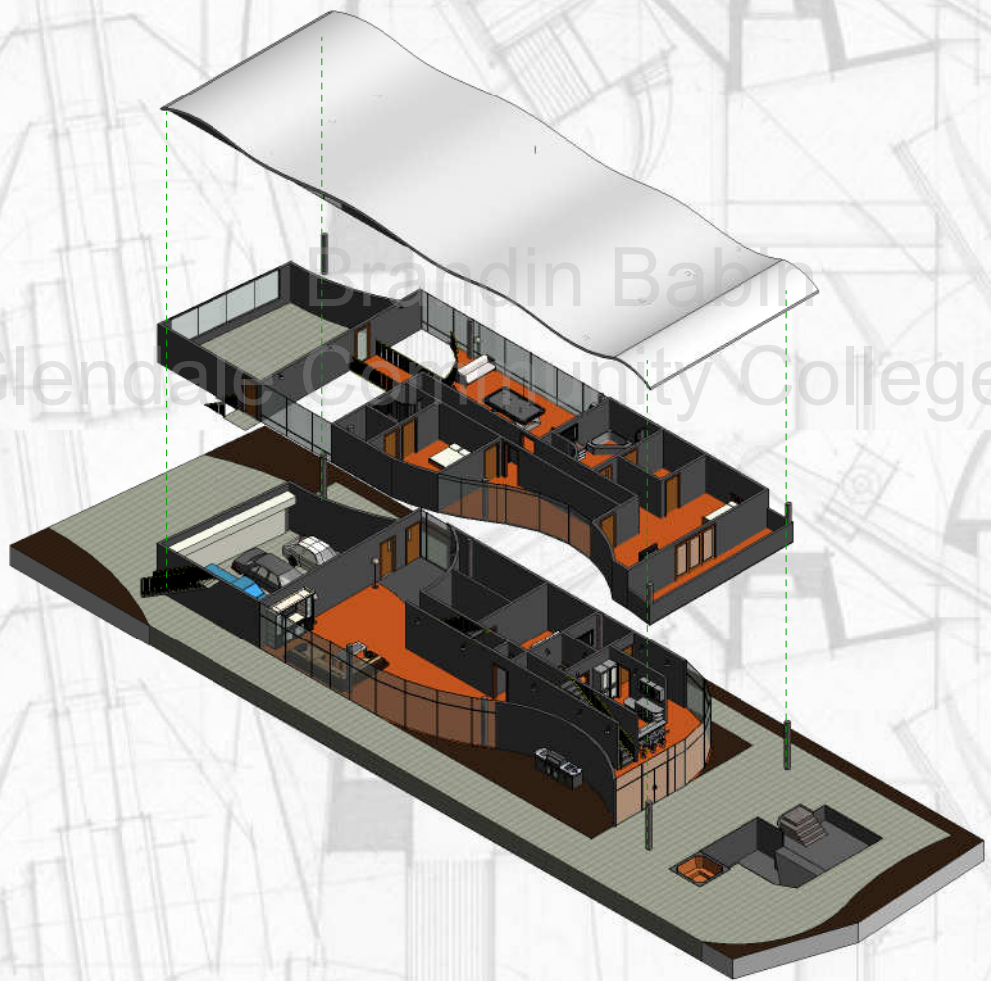
CONCEPT: Crafted metal

CLIENT: Motorcycle tank crafter

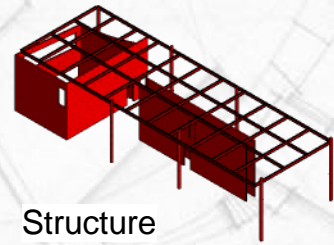


A Metal Crafter takes a flat piece of metal and turns it into a sleek smooth design. Understanding this helps understanding the concept of this building.

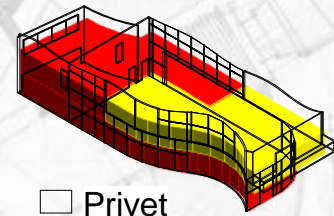
Glendale Community College, CA



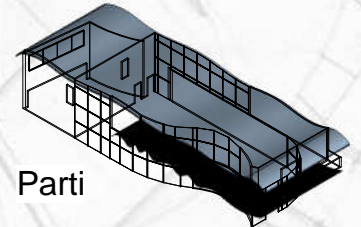
Circulation



Structure

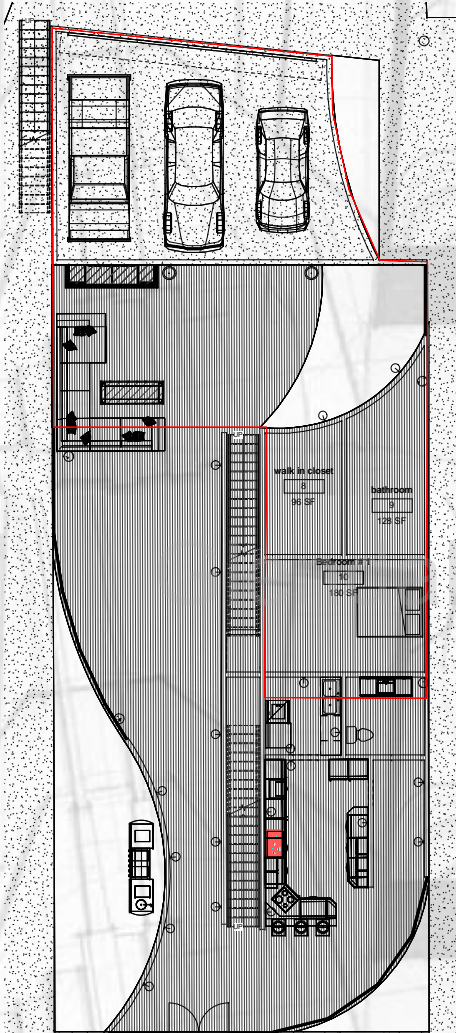


Privet
Public

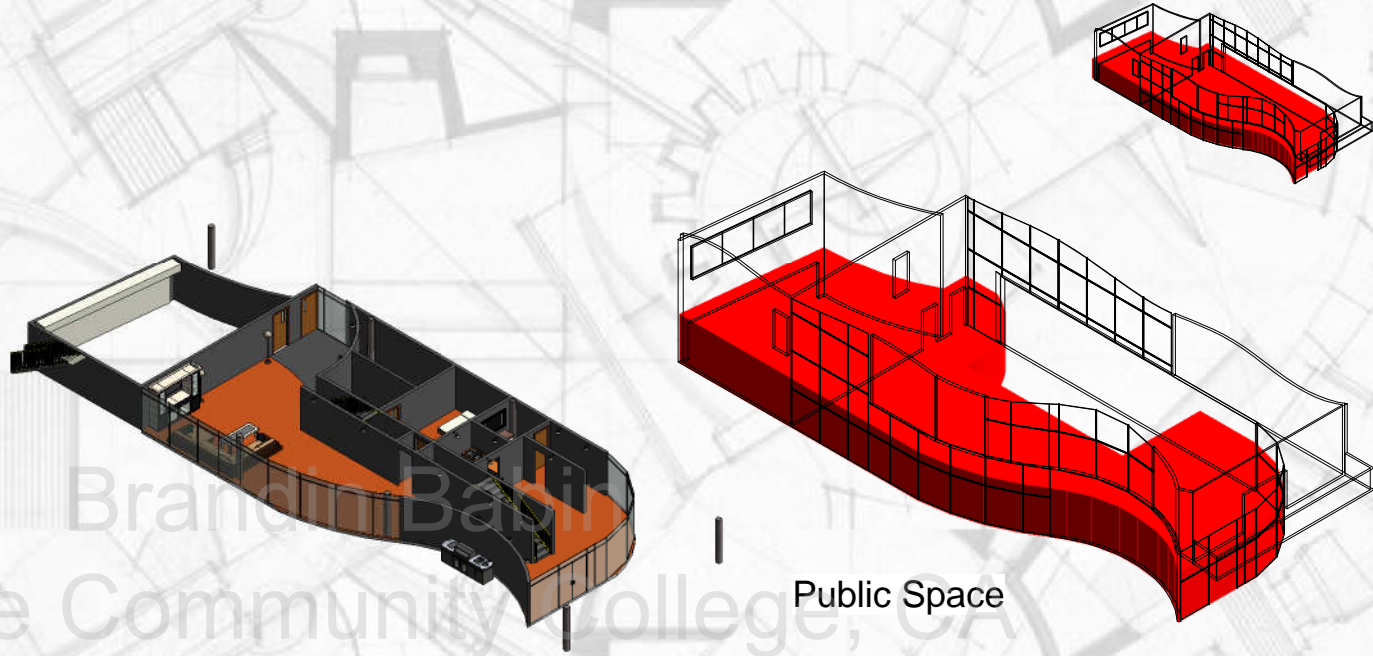


Parti

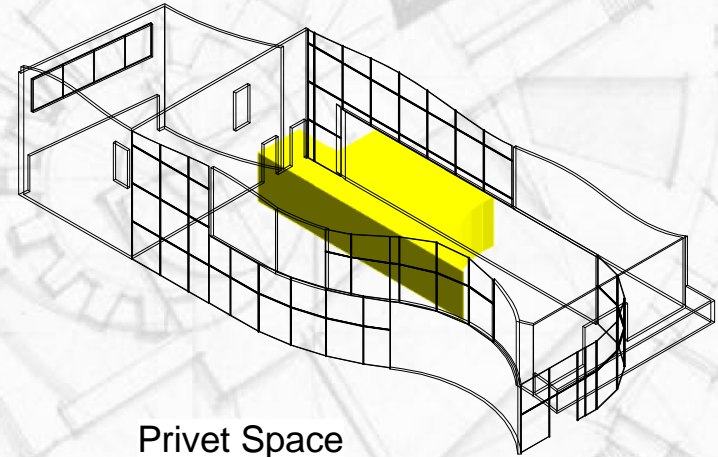
Floor Plan



1. Bedroom with walk-in closet and personal bathroom.
2. Kitchen
3. Living room
4. powder room (Guest bathroom)
5. Three car garage

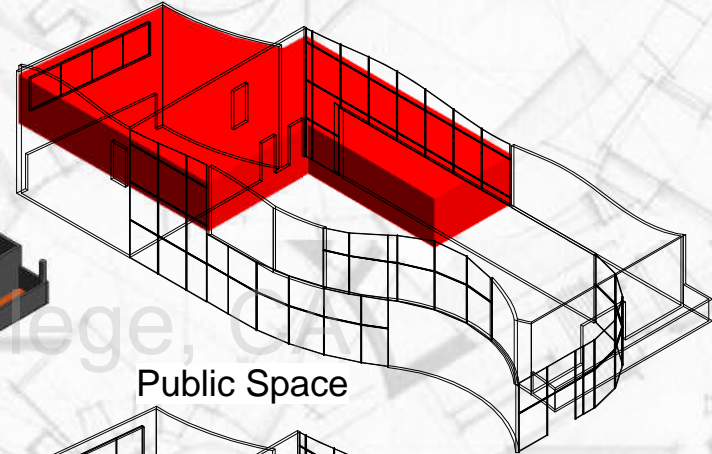
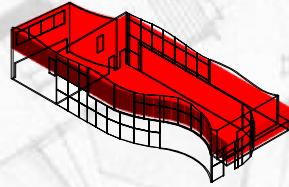
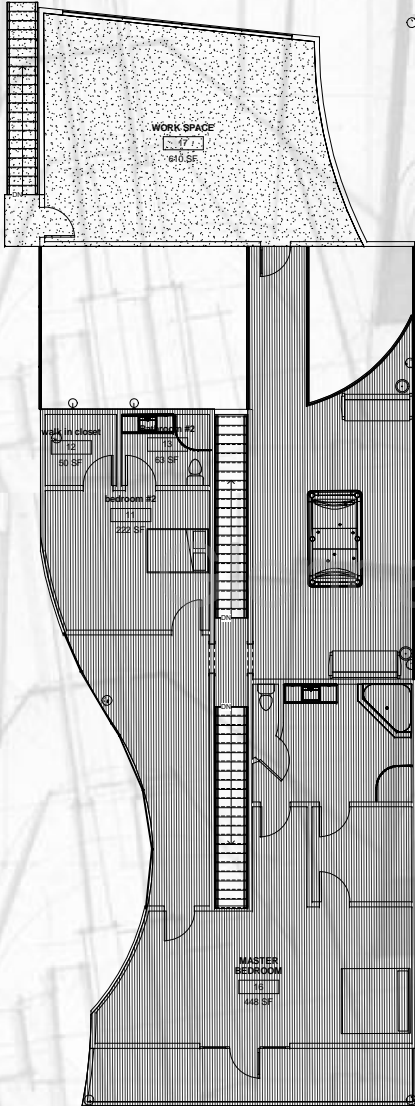


Public Space

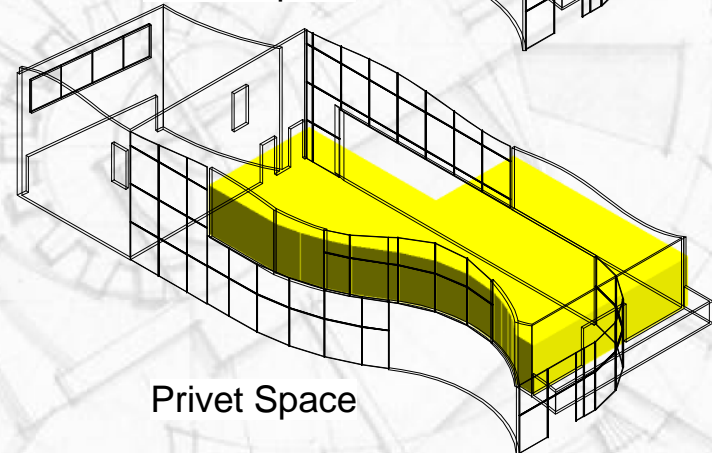


Privet Space

Floor Plan

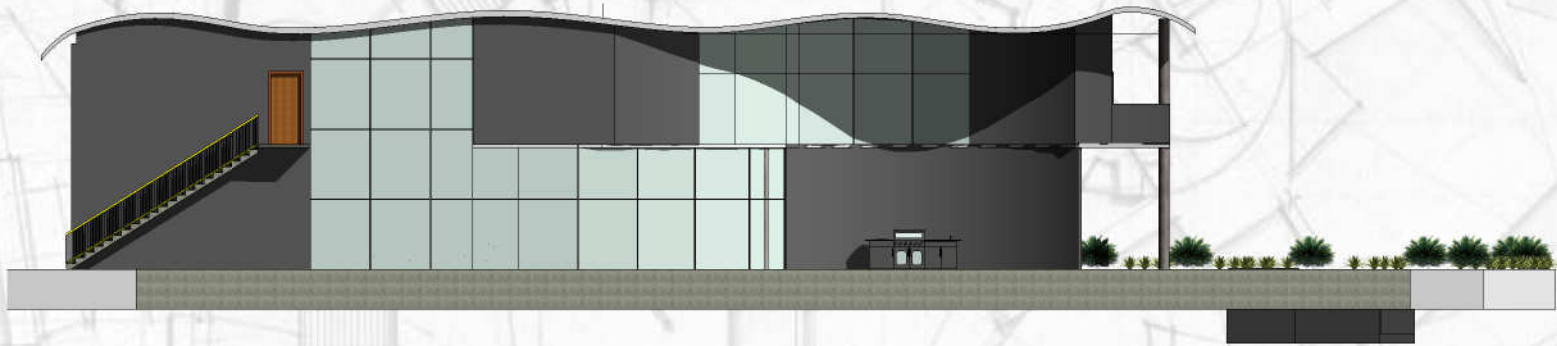


Public Space

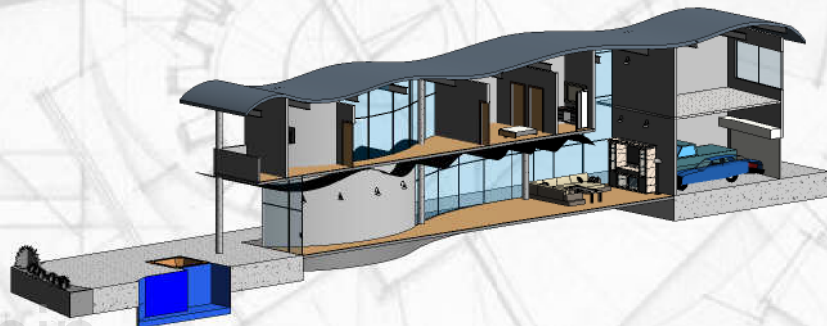
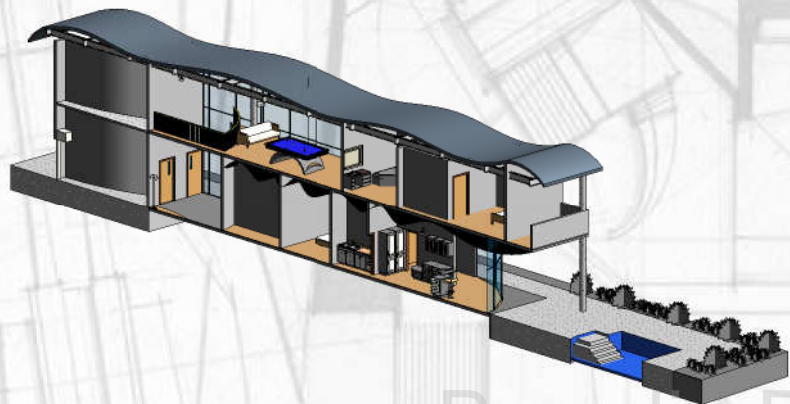


Private Space

1. Bedroom with walkin closet and personal bathroom
2. Master bedroom with a walkin closet and a master bathroom
3. Game room
4. workspace above garage



Brandin Babin
Glendale Community College, CA



Brandin Babin
Glendale Community College, CA





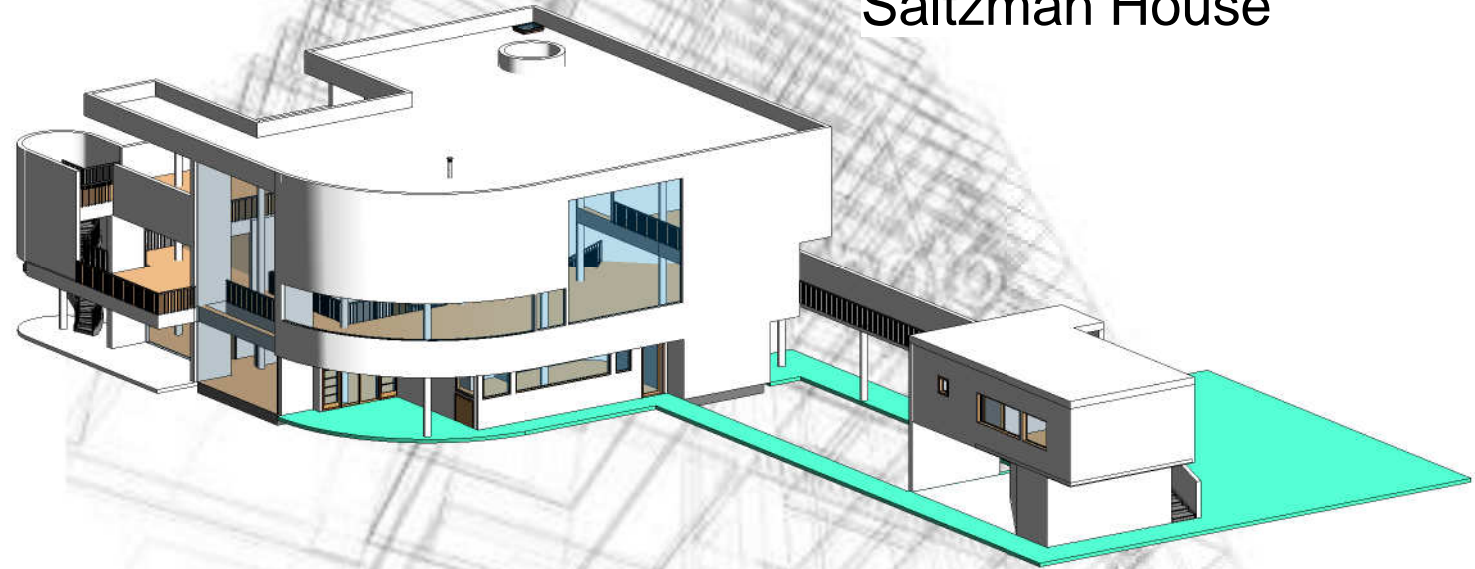
Brandin Babin

Glendale Community College, CA



Case Study

Saltzman House



Designed By
Richard Meier

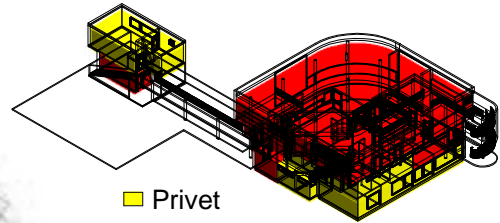
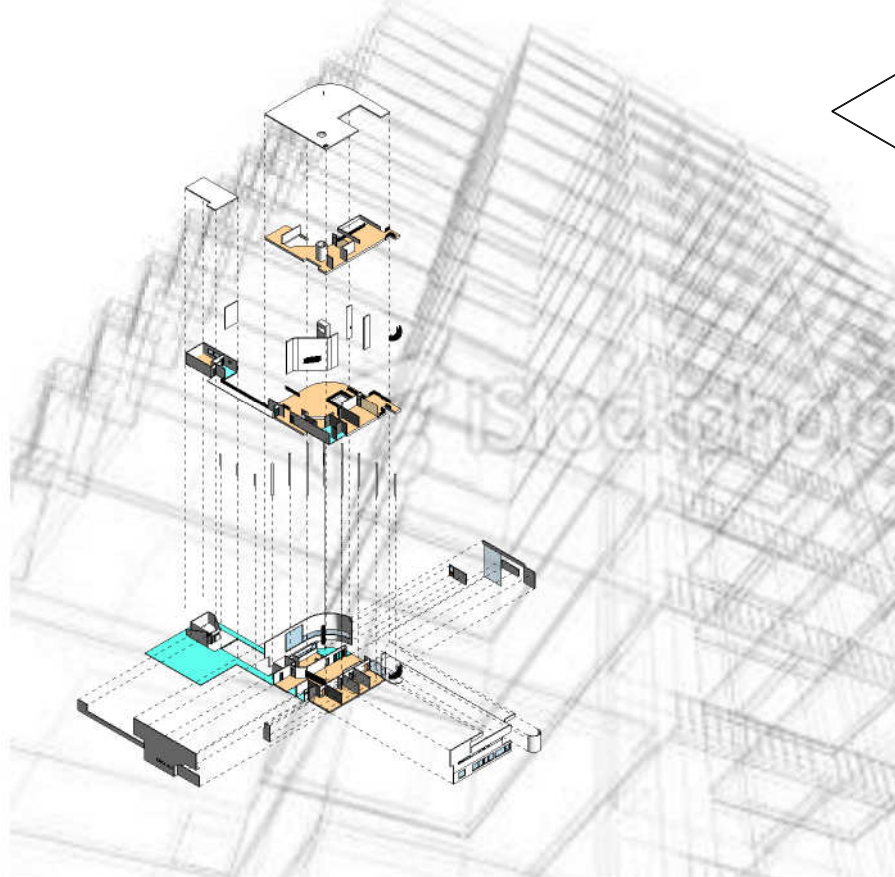
Richard Meier Saltzman House



archweb.it



Slightly inland for the Atlantic Ocean on three acres of flat land near at the tip of Long Island. What makes this site stand out is it has a windmill by the shore, an adjoining potato field, and the shoreline itself. You can't see the ocean from the ground level so the multistory house creates a great view of the shore line



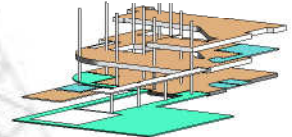
Privet

Public

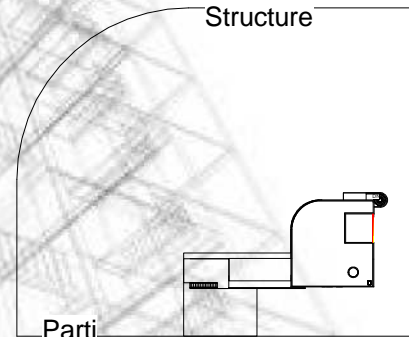
Program



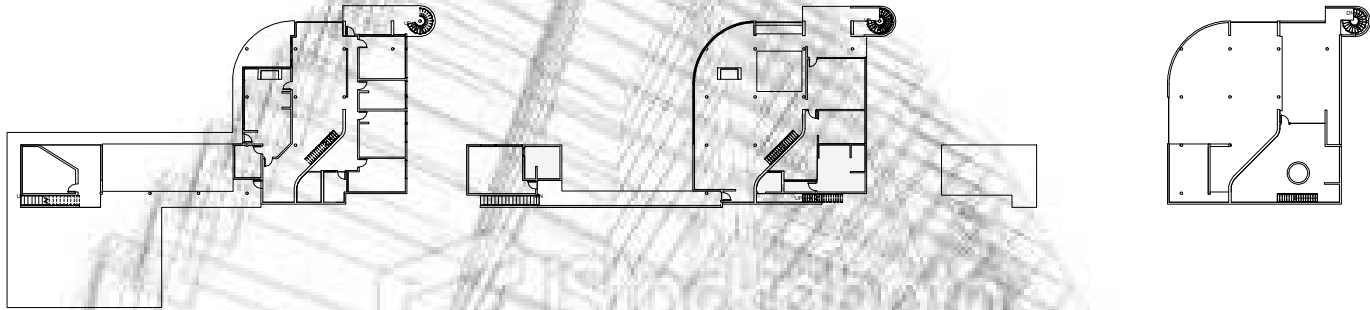
Circulation



Structure



Parti



Ground Level

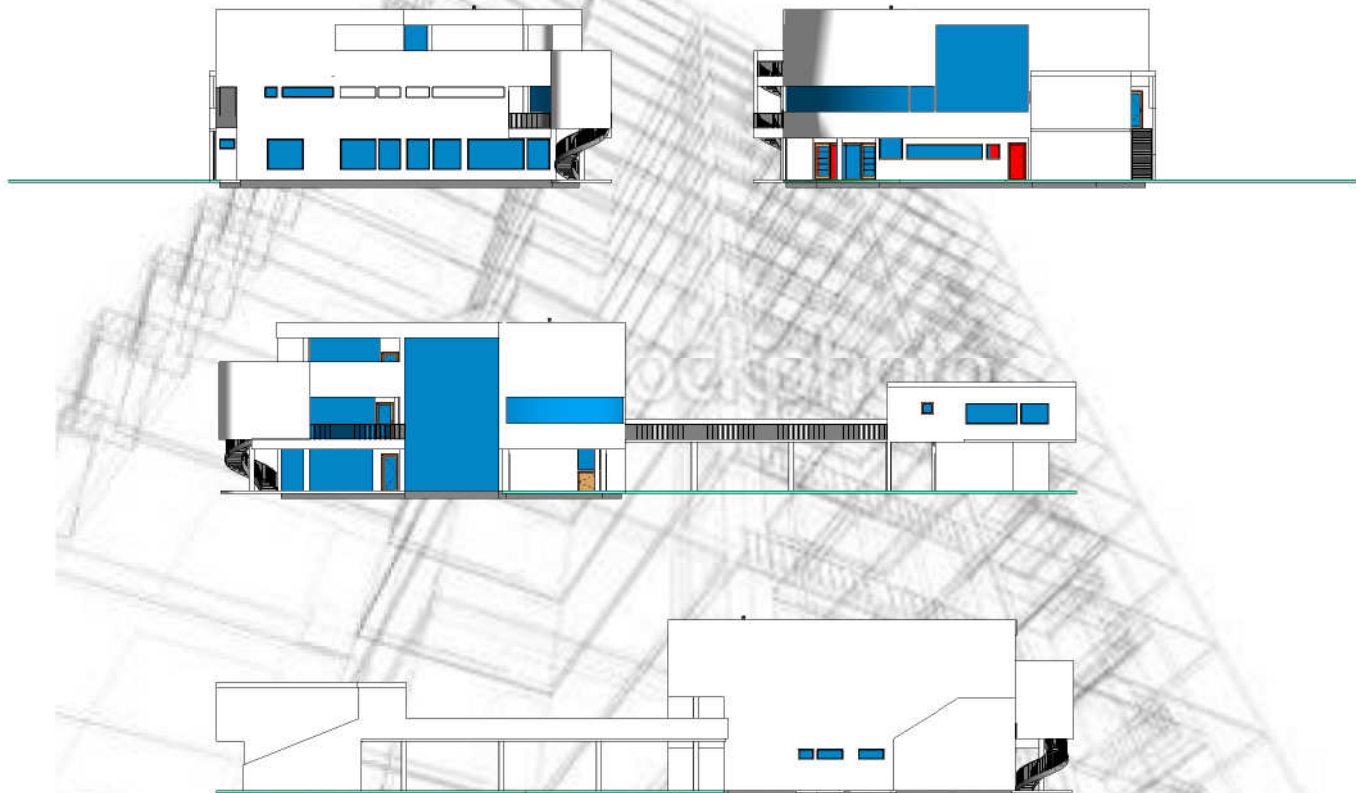
- Four Bedroom
- one and a half bath
- Kitchen
- Laundry room
- Storage
- Fireplace

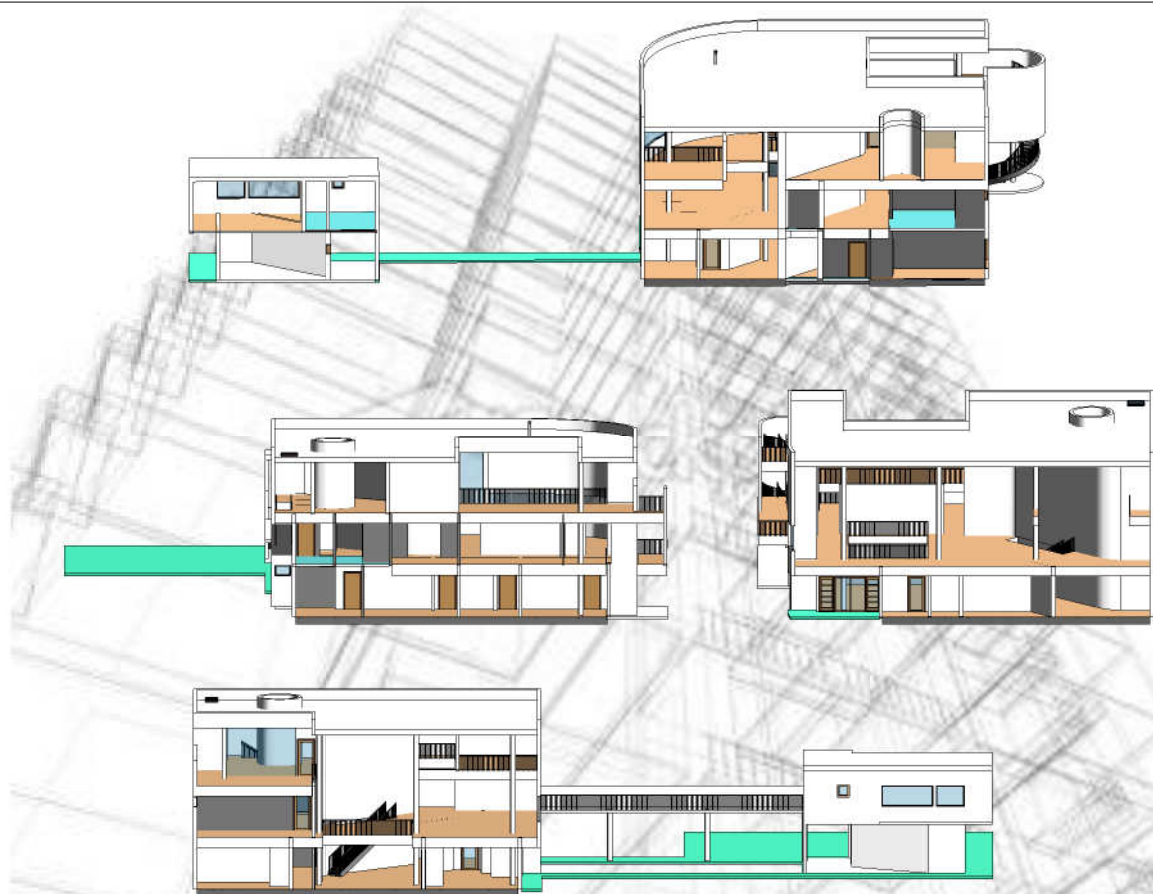
2nd Level

- Master Bedroom
- Master Bathroom
- Family room with Fire place
- Guest Room and Bathroom

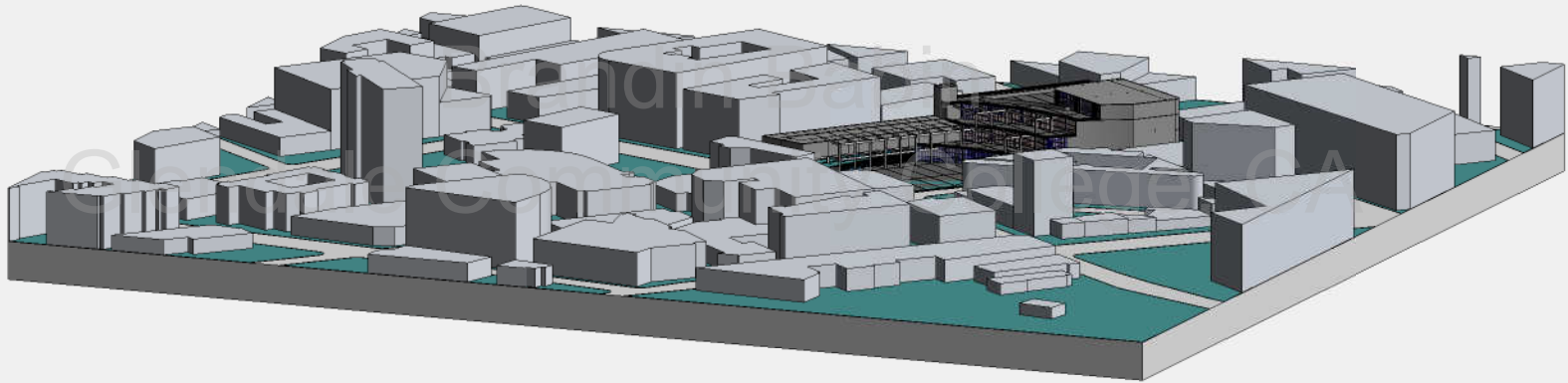
3rd Level

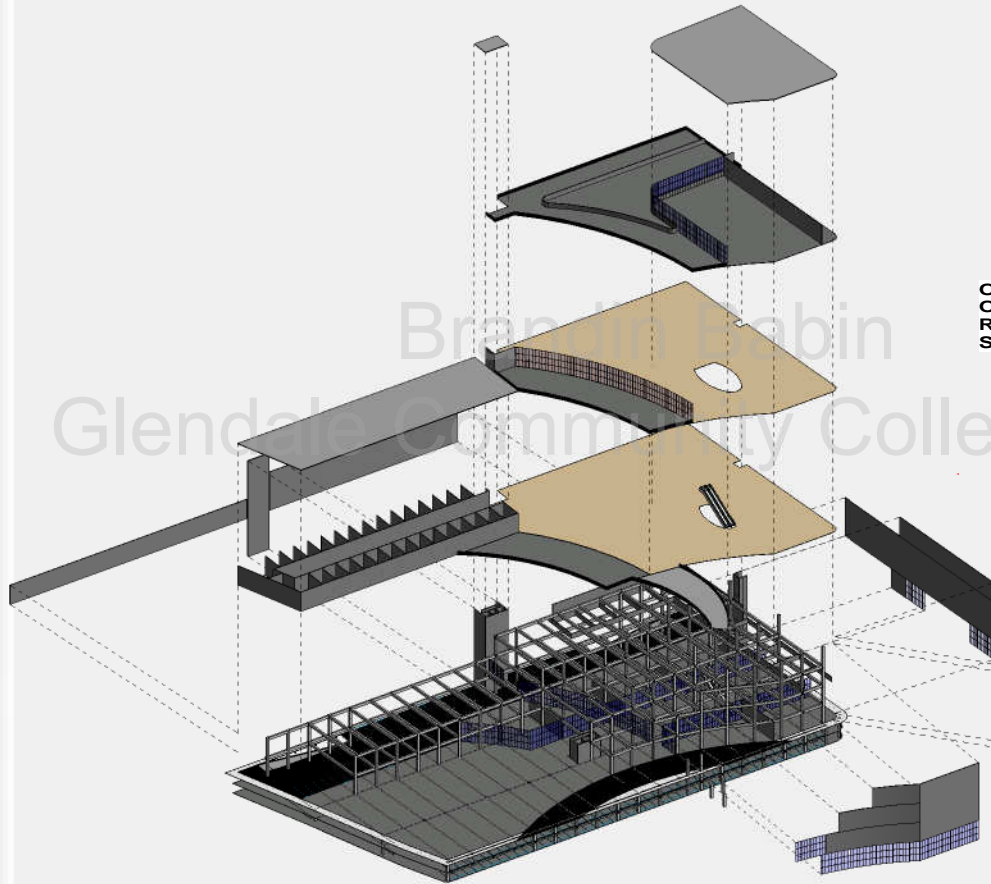
- Porch
- Den



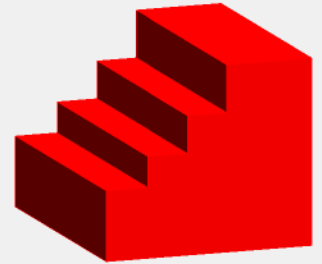


Little Tokyo



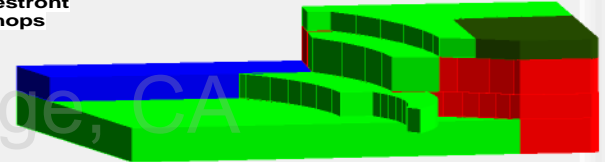


Parti

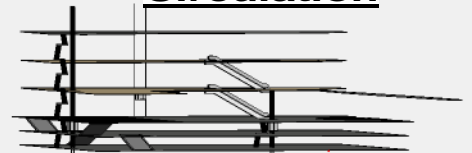


Offices
Open Space
Restront
Shops

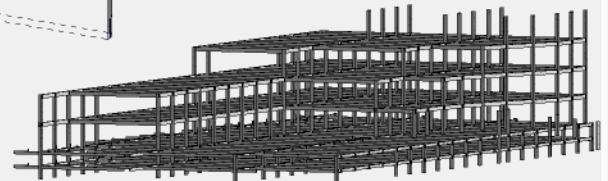
Program



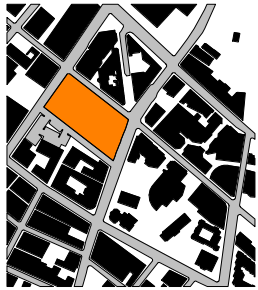
Circulation



Structure

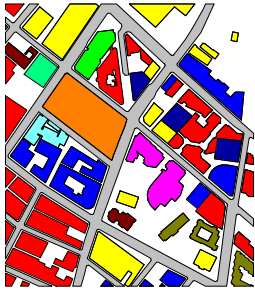


EXISTING CONDITION DIAGRAMS OF LITTLE TOKYO SITE -



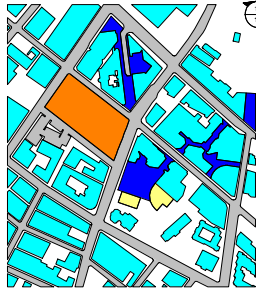
LEGEND:
PROJECT LOCATION

EXISTING FIGURE GROUND DIAGRAM
0 150 300 600 1200



LEGEND:
RETAIL / APARTMENT MIX-USE
HOTEL
RETAIL
MUSEUM / CIVIC BUILDING
OFFICE BUILDING
PARKING STRUCTURE
LIBRARY
CHURCH
APARTMENT

EXISTING NEIGHBORHOOD DIAGRAM
0 150 300 600 1200



LEGEND:
RETAIL SHOPPING OPEN SPACE
MUSEUM PLAZA
PROJECT LOCATION
BUILDINGS

EXISTING OPEN SPACE DIAGRAM
0 150 300 600 1200



EXISTING STREET SECTION DIAGRAM

EXISTING STREET SECTION DIAGRAM
0 150 300 600 1200



LEGEND:
PEDESTRIAN ACCESS
PROJECT LOCATING
BUILDINGS

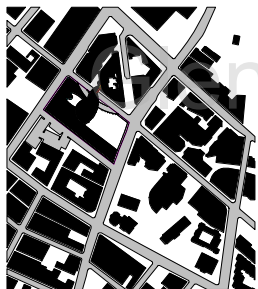
EXISTING PEDESTRIAN ACCESS DIAGRAM
0 150 300 600 1200



LEGEND:
VEHICULAR
PROJECT LOCATING
BUILDINGS

EXISTING VEHICULAR CIRCULATION DIAGRAM
0 150 300 600 1200

PROPOSED DESIGN DIAGRAMS OF LITTLE TOKYO SITE -



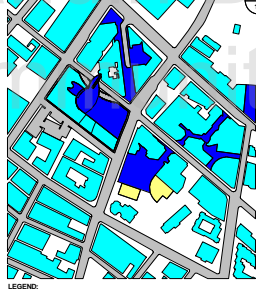
LEGEND:
PROJECT LOCATION

PROPOSED FIGURE GROUND DIAGRAM
0 150 300 600 1200



LEGEND:
RETAIL / APARTMENT MIX-USE
HOTEL
RETAIL
MUSEUM / CIVIC BUILDING
OFFICE BUILDING
PARKING STRUCTURE
LIBRARY
CHURCH
APARTMENT

PROPOSED NEIGHBORHOOD DIAGRAM
0 150 300 600 1200



LEGEND:
RETAIL SHOPPING OPEN SPACE
MUSEUM PLAZA
PROJECT LOCATION
BUILDINGS

PROPOSED OPEN SPACE DIAGRAM
0 150 300 600 1200



PROPOSED STREET SECTION DIAGRAM

PROPOSED STREET SECTION DIAGRAM
0 150 300 600 1200



LEGEND:
PEDESTRIAN ACCESS
PROJECT LOCATING
BUILDINGS

PROPOSED PEDESTRIAN ACCESS DIAGRAM
0 150 300 600 1200



LEGEND:
VEHICULAR
PROJECT LOCATING
BUILDINGS

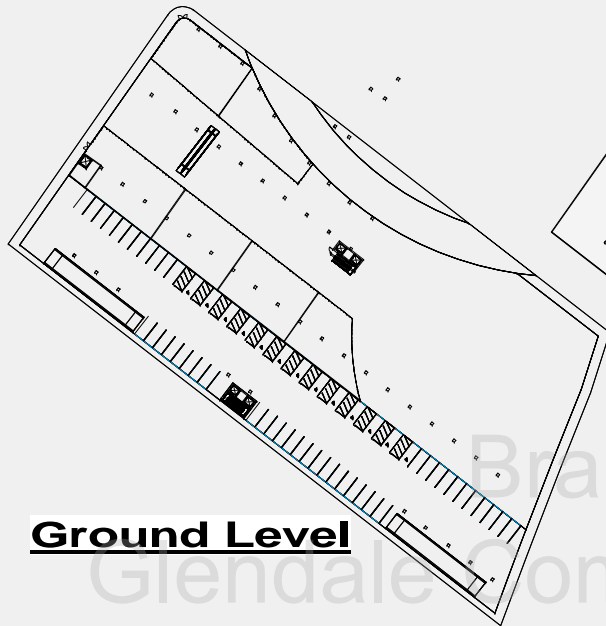
PROPOSED VEHICULAR CIRCULATION DIAGRAM
0 150 300 600 1200

GLENDALE COMMUNITY COLLEGE ARCHITECTURE DEPARTMENT, CA

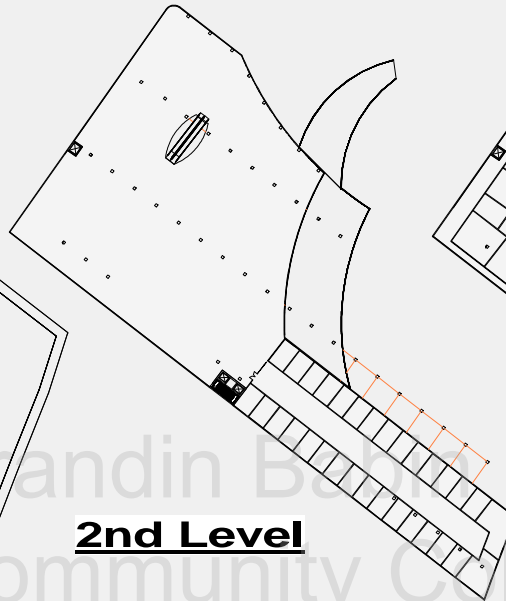
BRANDIN BABIN

LITTLE TOKYO MIX-USE COMMERCIAL DEVELOPMENT

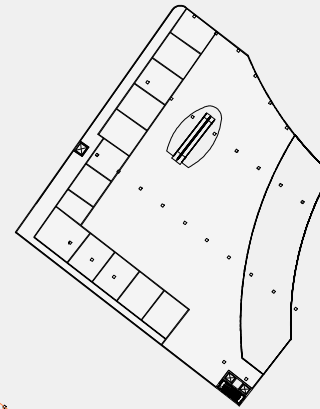
MASTER PLANNING IDEAS AND STRATEGIES



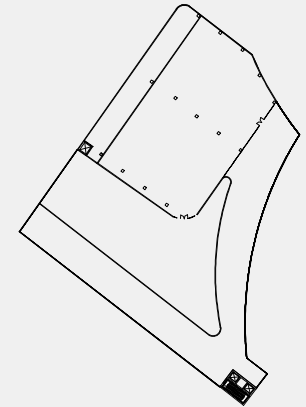
Ground Level



2nd Level



3rd Level



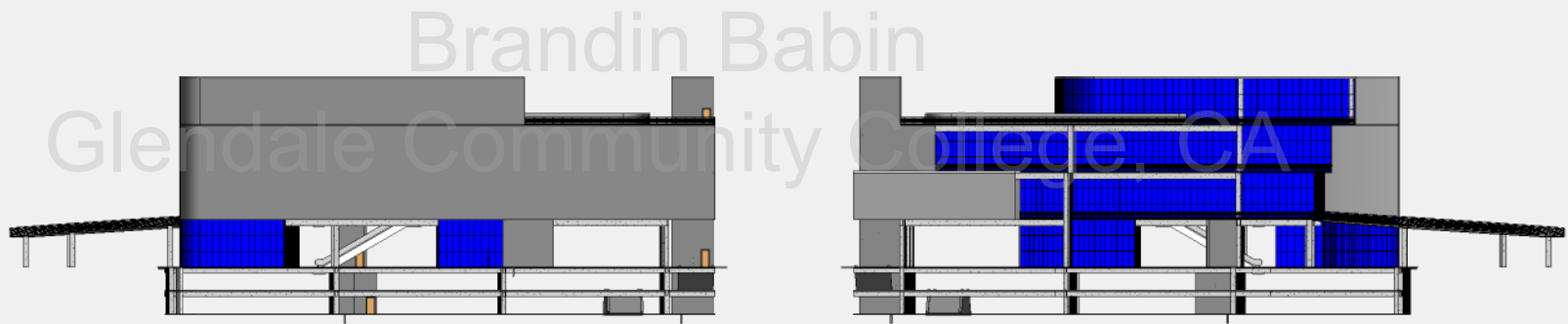
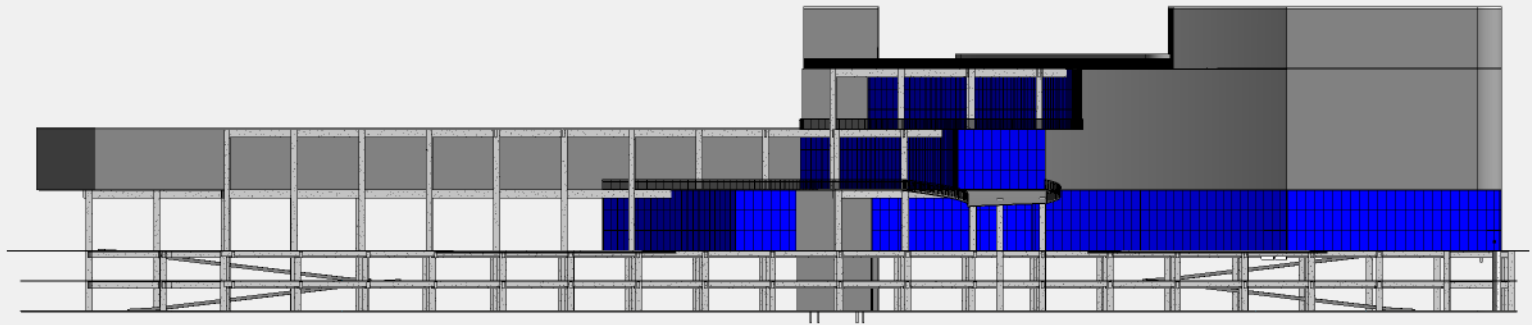
4th Level

- Parking
- Stores
- Open Space

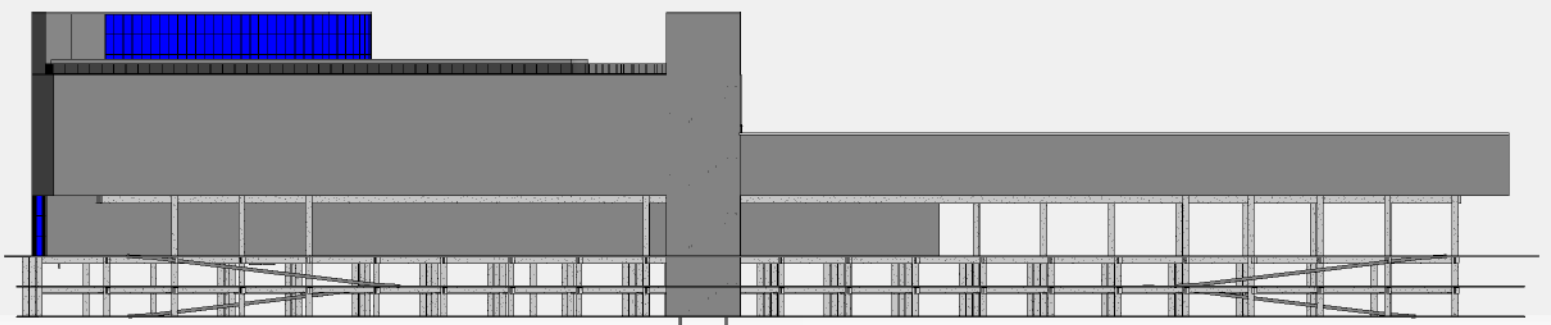
- Offices
- large retail store (ex. target)

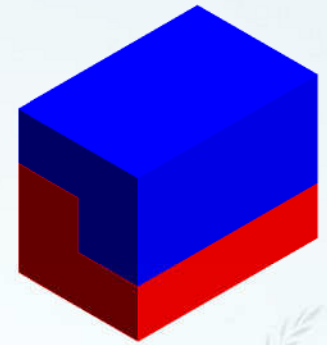
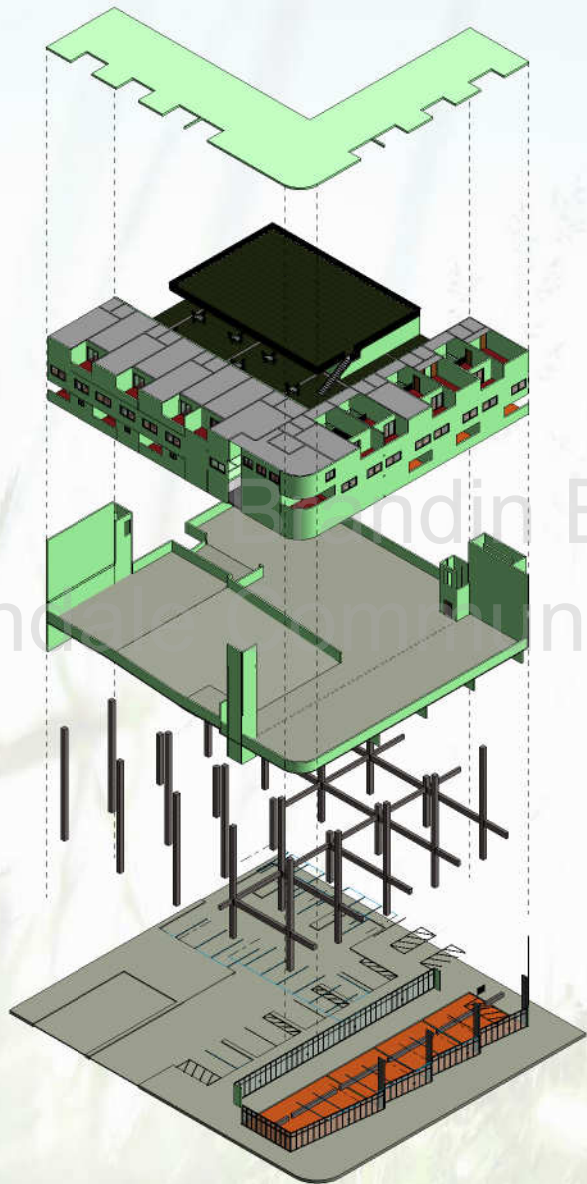
- Food Court

- Roof Top Restront with out door seating

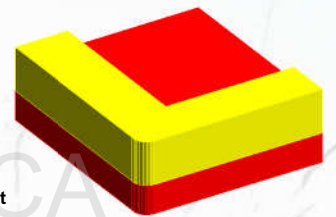


Brandin Babin
Glendale Community College, CA



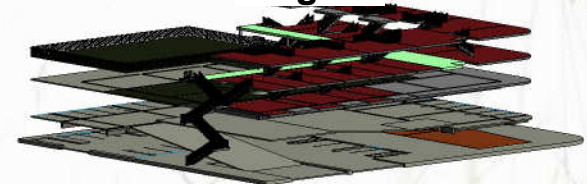


Parti



Program

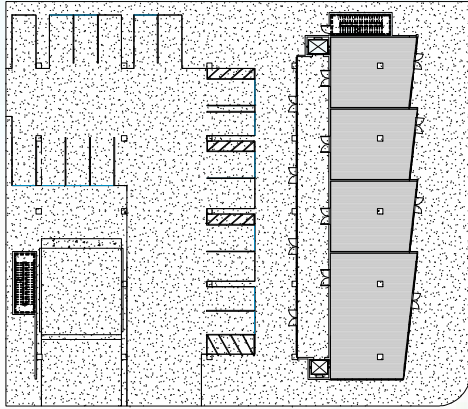
- Yellow Privet
- Red Public



Circulation

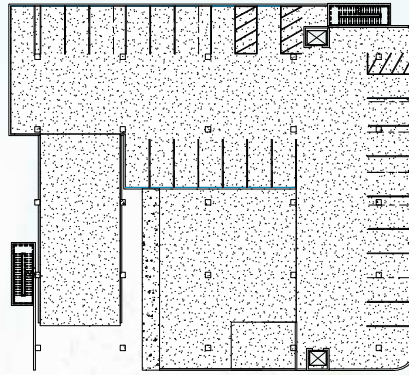


Structure



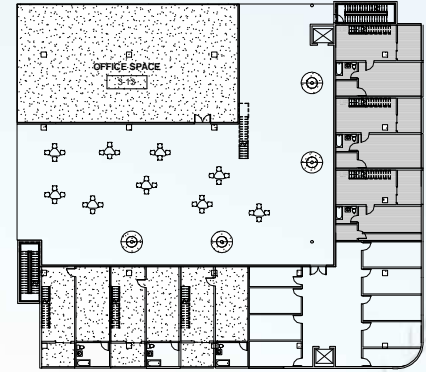
Ground Floor

- Retail Shops
- First level of parking structure



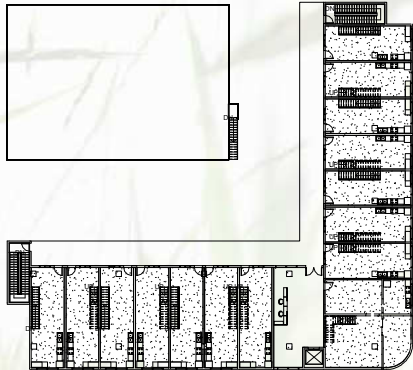
2nd Level

- 2nd level of Parking Structure
- turn around space



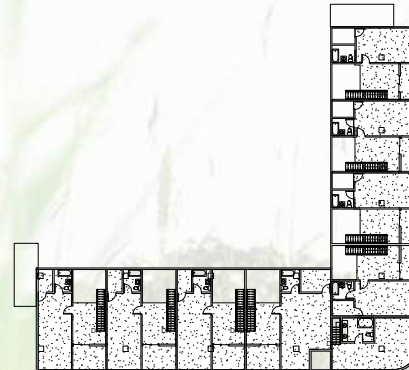
3rd Level

- Office space
- Picnic space
- Bottom floor of apartments



4th Floor

- entrances to apartments
- picnic area on top of offices

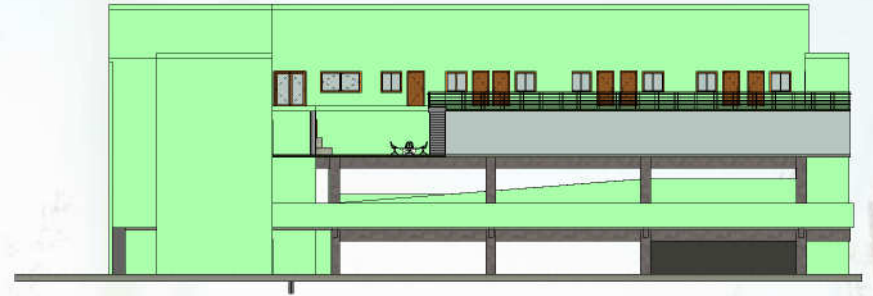


5th Floor

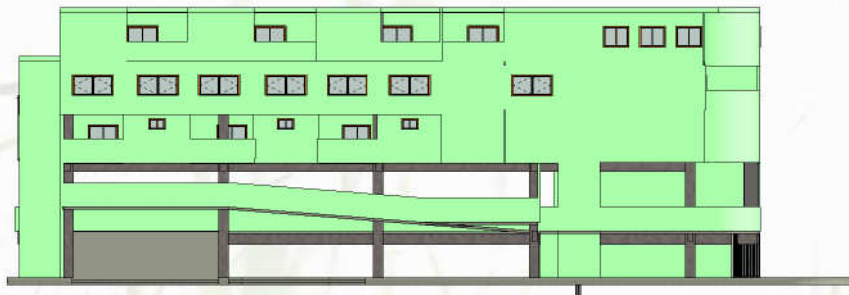
- Top floor of apartments



East Elevation



North Elevation



South Elevation



West Elevation

Brandin Babin
Glendale Community College, CA

East



Section

Brandin Babin

Glendale Community College CA

South



Section