



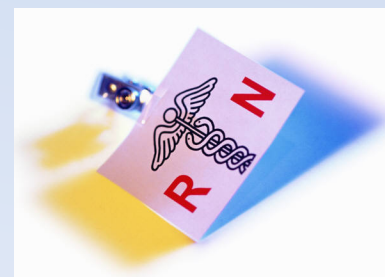
Glendale Community College(GCC)

Registered Nursing (RN) Program Information

1500 North Verdugo Road

Glendale, CA 91208

(818)240-1000 ext. 5270



Contents

- Prerequisites For Glendale Community College Nursing Program
- Additional Requirements For the Associate in Science (AS) in RN
- Minimum Eligibility Requirements For Admission to GCC's Nursing Program
- Application Deadlines
- Application Checklist
- Application Process
- Method of Selection
- GCC Nursing Program Information
- ADN-BSN Academic Progression In Nursing (APIN) Collaborative With CSULA
- Announcements
- BRN Policy Statement on Denial of Licensure
- Frequently Asked Questions

Prerequisites for Glendale Community College Nursing Program

- Biology 120 -- 5.0 Units -- Human Anatomy*
- Biology 121 – 4.0 Units -- Intro to Physiology*
- Biology 112 – 5.0 Units -- Microbiology*

*These courses must include labs and must equal 14 semester units or 21 quarter units. In the event these courses are equivalent but there are insufficient units, only a college Chemistry course with lab will be used to count toward the required Anatomy, Physiology and Microbiology units.

*Anatomy, Physiology and Microbiology older than 7 years must be repeated.

- English 101-Freshman English
- Psychology 101-General Psychology
- Eligibility for Math 101-Intermediate Algebra

Prerequisites must be completed with a grade of “C” or better and grades showing on an official transcript. “C-” is not acceptable.

Additional Requirements for the Associate in Science (AS) Degree in RN

- Speech 101-Public speaking (required for the RN certificate and AS in RN)
- Interdisciplinary Humanities
- Arts, Foreign Language, Literature and Philosophy (one course)
- Cultural Diversity
- Math 101, 119 &120 or MATH 131-Intermediate Algebra
- United States History
- American Institutions
- State and Local Government

*It is recommended to complete the above mentioned General Education courses before applying to the nursing program. See GCC catalog for courses satisfying the Graduation Requirements.

*Students who have earned a BA/BS degree from a regionally accredited college/university from the U.S. will receive an AS degree in RN after completing the prerequisites, Speech 101 and the RN program.

Minimum Eligibility Requirements for Admission to Glendale Community College Registered Nursing Program

- Minimum 2.0 cumulative GPA (for all college/university courses).
- **All Prerequisites must be completed** with a grade of “C” or better and grades showing on an official transcript.
- High school diploma, GED or equivalent OR a degree from a regionally accredited college/university or equivalent.
- One official AP score(3 or higher) if applicable to nursing prerequisites.
- Social Security number.
- Chancellor’s Formula cut score of 75% or higher.
- TEAS version V cut score of 62% or higher.
- Random Selection.



RN Application Deadlines

The Nursing Department admits students twice a year:

August 15 for the following Winter session
(class begins in January)

March 1 for the following Summer session
(class begins in June)

In the event that these dates fall on a weekend or a holiday, the deadline will be extended to the next business day.

Check the GCC nursing website for exact dates at
www.glendale.edu/nursing

Application Checklist

Applications will be available one month before the deadlines at www.glendale.edu/nursing

- **Submit the Following with Your Application:**
- Advanced Placement (AP) Score (if applicable). Applicants who have received AP scores of 3 or higher for AP courses applicable toward nursing prerequisites must submit ONE official score from the College Board.
- Course Syllabus. If prerequisite courses were taken at a private college/university in California OR if they were taken outside of California, the course syllabus must be submitted with the application.

Application Checklist (continued)

[GCC Math Placement Test Results](#) (if applicable)

To be eligible to apply, applicants have to be eligible for **Intermediate Algebra**. If you have not completed elementary Algebra or higher in a college/university in the USA, you need to take the Math Placement test at the GCC Assessment Center located at SF 112 and provide a printout of the results with your application to the nursing department. Your result should state “eligible for Math 119, 101 or 131”. We do not accept Math assessment results from other colleges.

Note: To earn an AS degree in RN, students need to complete Intermediate Algebra or higher.

For more information about the Assessment Center visit

<http://www.glendale.edu/index.aspx?page=570>

Application Checklist (continued)

Official TEAS Version V Results (if applicable)

If you have already taken the TEAS Version V, you must send your FIRST score to the nursing department through the ATI website (www.atitesting.com) to “Glendale CC ADN CA”. If you have taken the TEAS more than once, the nursing department will consider the score of the first attempt to determine eligibility.

Application checklist (continued)

Three (3) Envelops

Applicants must provide three envelopes (business size; approximately 4x9.5) self addressed and stamped.

Documentation of Honorable Discharge (if applicable)

If you are a veteran or the spouse of a veteran of the US armed forces, please provide a copy of your/your spouse's DD-214.

Application checklist (continued)

Social Security Card

Proof of High School Completion (If applicable). Applicants who have not earned a college/university degree (AA/AS, BA/BS) must submit proof of High School/GED completion. One of the following must be submitted:

One High School/GED official transcript OR the original diploma AND a copy of your diploma.

Foreign High School transcripts must be evaluated through one of the evaluators approved by GCC. We need ONE “general” High School evaluation. Refer to the next slide for approved evaluation services.

Two Official Transcripts from all colleges/universities attended.

GCC students: Submit only one official transcript for GCC courses.

Students with foreign college/university transcripts: Submit two detailed official transcript evaluations from one of the foreign transcript evaluation services approved by GCC. (See the list on the next slide).

Evaluation of International Transcripts

Foreign High School/College/University Transcripts must be evaluated through one of the evaluators approved by GCC.

Provide ONE “General Report” for High School and TWO “Detailed Reports” for College/University from one of the following approved evaluators:

Academic Credentials
Evaluation Institute, Inc.
Beverly Hills, CA
www.acei1.com
310-275-3530

American Education Research Corporation
West Covina, CA
www.aerc-eval.com
626-339-4404

International Educational
Research Foundation
Culver City, CA
www.ierf.org
310-258-9451

World Evaluation Services, Inc.
New York, NY
www.wes.org
212-966-6311

Academic & Professional
International Evaluations, Inc.
Los Alamitos, CA
www.apie.org

Application Process

The nursing application can be found at www.glendale.edu/nursing one month before the application deadlines.

Print and complete the *pdf* document following the instructions. Submit the application and all supporting documents in person* to the Nursing Department before the required deadline.

FOLLOW THE DIRECTIONS ON THE APPLICATION

Wait about a month or two (after the deadline) to receive additional information from the Nursing Department.

* Applicants who live outside Los Angeles County may send all required documents via U.S. mail to the following address:

Glendale Community College
Attn: Nursing Department
1500 North Verdugo Road
Glendale, CA 91208

Selection Criteria

The GCC Nursing program uses the following criteria:

- Chancellor's Formula cut off score 75%
- TEAS version V cut off score 62%
- Student who have met the eligibility requirements to apply to our program and successfully meet the above mentioned cut off scores qualify for random selection for the nursing program.
- For more information visit:
<http://www.glendale.edu/index.aspx?page=5514>

Method of Selection

Chancellor's Formula Cut off Score 75%

Individual student scores in four areas are entered into a weighted formula which evolved from a statewide study of 1,500 nursing students. These four areas are statistical predictors of success:

1. Overall GPA (all college/university coursework)
2. Core Science GPA (Anatomy, Physiology and Microbiology)
3. College English GPA (Freshman English)
4. Any documented repetition in Anatomy, Physiology and Microbiology (this includes any W, D or F)

The overall result represents the likelihood that a student will be successful in a nursing program.

Students who do not meet the 75% cut off score will have the option to complete a remediation plan at Glendale Community College. The nursing department does not accept remediation plans completed at other colleges.

Method of Selection (Continued)

Test of Essential Academic Skills (TEAS) Version V

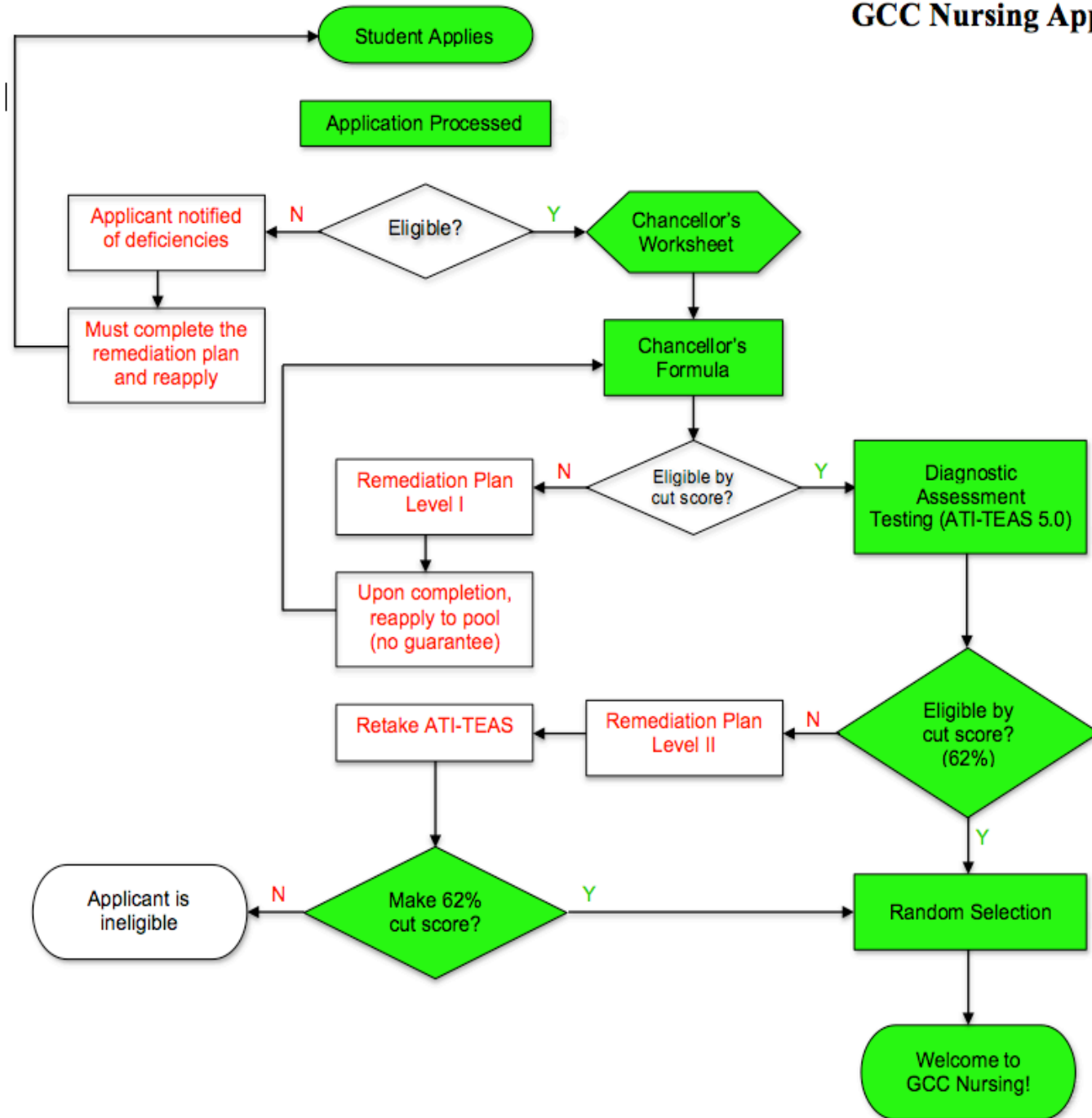
Cut off Score 62%

Students will be required to pass the TEAS version 5 test to determine readiness for enrollment into the GCC RN program.

After submitting their applications, students will be notified by the Nursing Department to take the test (Unless they've already taken it).

Students who fail to get the 62% cut off score on the first try will have the option to complete a remediation plan at Glendale Community college before retaking the test. The nursing department does not accept remediation plans completed at other colleges.

GCC Nursing Application Process



Options in the Registered Nursing Program at GCC

Standard Program:

- Full Time
- Monday-Friday
- Must be available 6:00a.m.-10:p.m.

Weekend/Evening Program:

- Full Time
- Monday-Friday. Must be available 4:00p.m.-10:00p.m. and weekends 6:00a.m.-10p.m. for clinicals.
- **Note:** Currently, there are lecture schedule changes for the 3rd and 4th semester Weekend/Evening program. Please refer to the announcements for updates on the nursing website at www.glendale.edu/nursing

GCC Nursing Program Information

Registered Nursing students are admitted twice a year:

- Those who apply by March 1 deadline and are admitted in the program, will start the following Summer session.
- Those who apply by August 15 deadline and are admitted in the program, will start the following Winter session.
- Class size is determined by the state budget.

GCC Registered Nursing Program Information

- GCC's RN program is a two year full time program. It includes lectures, seminars and clinical training.
- It includes four semesters and one Winter and one Summer sessions.
- The following are a few of the clinical sites:
Glendale Adventist, Glendale Memorial,
Children's Hospital, Kaiser Sunset,
St. Joseph, Verdugo Hills and others.

Clinical Hours: 6, 8, 10, or 12 hour rotations. They vary between 6 a.m. and 10 p.m., but could include night shift (i.e. 7 p.m. to 7 a.m.)

Students will be responsible for transportation to and from their clinical site.

Degree Earned at Glendale Community College



- Associate in Science Degree in Registered Nursing (AS in RN).

After completing the required nursing coursework and graduation requirements students will earn an AS degree in RN and will be eligible to take the NCLEX-RN licensing examination to become a Registered Nurse.

- For more information visit the nursing website at www.glendale.edu/nursing

ADN-BSN Collaborative With CSULA

Only For GCC RN Students

- **Eligibility Requirements:**
- Complete GCC RN prerequisites and graduation requirements for AS in RN.
- Complete CSULA nursing prerequisites.
- Complete IGETC for CSU OR CSU GE Breadth (GE Certified).
- Minimum GPA 3.0 in Anatomy, Physiology, Microbiology, Chemistry and English 101.
- Minimum 3.0 GPA in GCC Nursing courses
- Minimum overall GPA 3.0.
- AS degree in RN.
- Pass NCLEX-RN licensing examination.
- Continue at CSULA and earn the BSN degree in 1 year.

- ❖ Human Nutrition and Principles of Sociology are required courses to be completed for the CSULA BSN degree.
- ❖ All those who qualify will be chosen by random selection.
- For more information visit the following link
<http://www.glendale.edu/index.aspx?page=5812>

Approximate Cost of Attending GCC Nursing Program

- The following link reflects an **approximate** estimation of the costs incurred by nursing students during enrollment in the Associate Degree Nursing Program.

<http://www.glendale.edu/index.aspx?page=5182>

Options in Nursing: A.S. / B.S.N. / M.S.N

- **Associate Degree**
 - After completing the coursework, you will take the NCLEX-RN to become a registered nurse.
- **Bachelor's Degree**
 - Requires two additional years of schooling, where you learn administrative nursing responsibilities.
 - Some programs require students to have their R.N. license to enter the program (depends on the school).
- **Master's Degree**
 - Become a specialist (flight nurse, school nurse, clinical nurse specialist, nurse practitioner, nurse anesthetists, nurse administrator, nurse educator, etc.)
 - Requires two additional years of schooling (with or without a Bachelor's degree, depends on school and on specialty).

Recommended Steps



- Attend a Nursing workshop to learn more about the GCC Nursing program.
- The workshop schedule is on line at www.glendale.edu/nursing (under Counseling and Workshops).

The workshops are held at our main campus.

Glendale Community College

1500 North Verdugo Rd

Glendale, CA 91208

(818) 240-1000

Recommended Steps (continued)

- Apply to Glendale College online at www.glendale.edu in order to obtain a student ID number (required if you want to make an appointment with the nursing counselor). It may take up to 10 days to process your application.
- Take the GCC English and Math placement tests.
 - Assessment Center: San Fernando 112, (818) 240-1000 x 5329.

Note: You don't need to take the English and Math placement tests if

- 1- You have earned an AP score of 3 or higher in English, Statistics or Calculus
- 2- You have taken College level English and Math at a regionally accredited college/university in the USA.

- Call Academic Counseling at (818)240-1000 x 5918 to schedule an appointment with the nursing counselor to develop your Educational Plan for Pre Nursing. Bring your unofficial transcripts to your appointment.

Board of Registered Nursing Policy Statement on Denial of Licensure

The Board may deny licensure on the basis of:

- Conviction of a crime substantially related to the practice of nursing;
- Any act involving dishonesty, fraud, or deceit with the intent to substantially injure another;
- Conviction of child abuse;
- Violation of the Nursing Practice Act;
- Conviction as a mentally disordered sex offender;
- Crime or act involving narcotics, dangerous drugs, or dangerous devices;
- Conviction of assault and/or battery;
- Conviction of a felony.

Note: For questions regarding the above issues please contact the Nursing Department at (818) 240-1000, ext. 5270.

A Nurse Must Be Able to...

(Physical requirements in handbook)

- Stoop, lift, pull, stand, and walk;
- Bathe, turn, and ambulate patients in all age groups;
- Listen, understand, and appropriately respond to verbal information;
- Use the telephone to communicate critical information. (Speak clearly.)
- Hear operator overhead pages, disaster/fire codes, & patient alarms;
(Hearing must be corrected if you do not hear clearly.)
- Measure vital signs
- Read small print on equipment and in patient files.
(Vision must be corrected if it needs correction.)

A Nurse Must Be Able to...

- Calculate correct medication dosages within a safe and realistic time frame;
- Manipulate small equipment;
- Prepare medications safely by reading small print on medication vials, medication records, patient arm bands, and small increments on medication containers. (Corrected vision)

A Nurse Must Be Able to...

- Document nursing care and actions via the computer and/or in writing;
- Prioritize activities/actions in an environment of multiple important and sometimes conflicting demands;
- Effectively use critical thinking skills.

BUILDINGS

- AA AVIATION / ART Bldg.
- AD JOHN A. DAVITT ADMINISTRATION Bldg.
- AS ARROYO SECO Bldg.
- AT ADVANCED TECHNOLOGY CENTER
- AU AUDITORIUM Bldg.
- BK BOOKSTORE
- CDC CHILD DEVELOPMENT CENTER
- CR CAMINO REAL Bldg.
- CS CIMMARUSTI SCIENCE CENTER
- D DUPLICATING
- EA EOPS ANNEX
- G ART GALLERY
- H HEALTH SCIENCES
- L LIBRARY
- LI LIBRARY II
- LS LIBRARY STUDENT CENTER
- OM OPERATIONS & MAINTENANCE
- SB SANTA BARBARA Bldg.
- SC J.W. SMITH STUDENT CENTER
- SF SAN FERNANDO Complex
- SG SAN GABRIEL Bldg.
- SM SIERRA MADRE Bldg.
- SN SIERRA NEVADA Bldg.
- SR SAN RAFAEL Bldg.
- VG VERDUGO GYM
- VG T VERDUGO GYM Trailers

PARKING

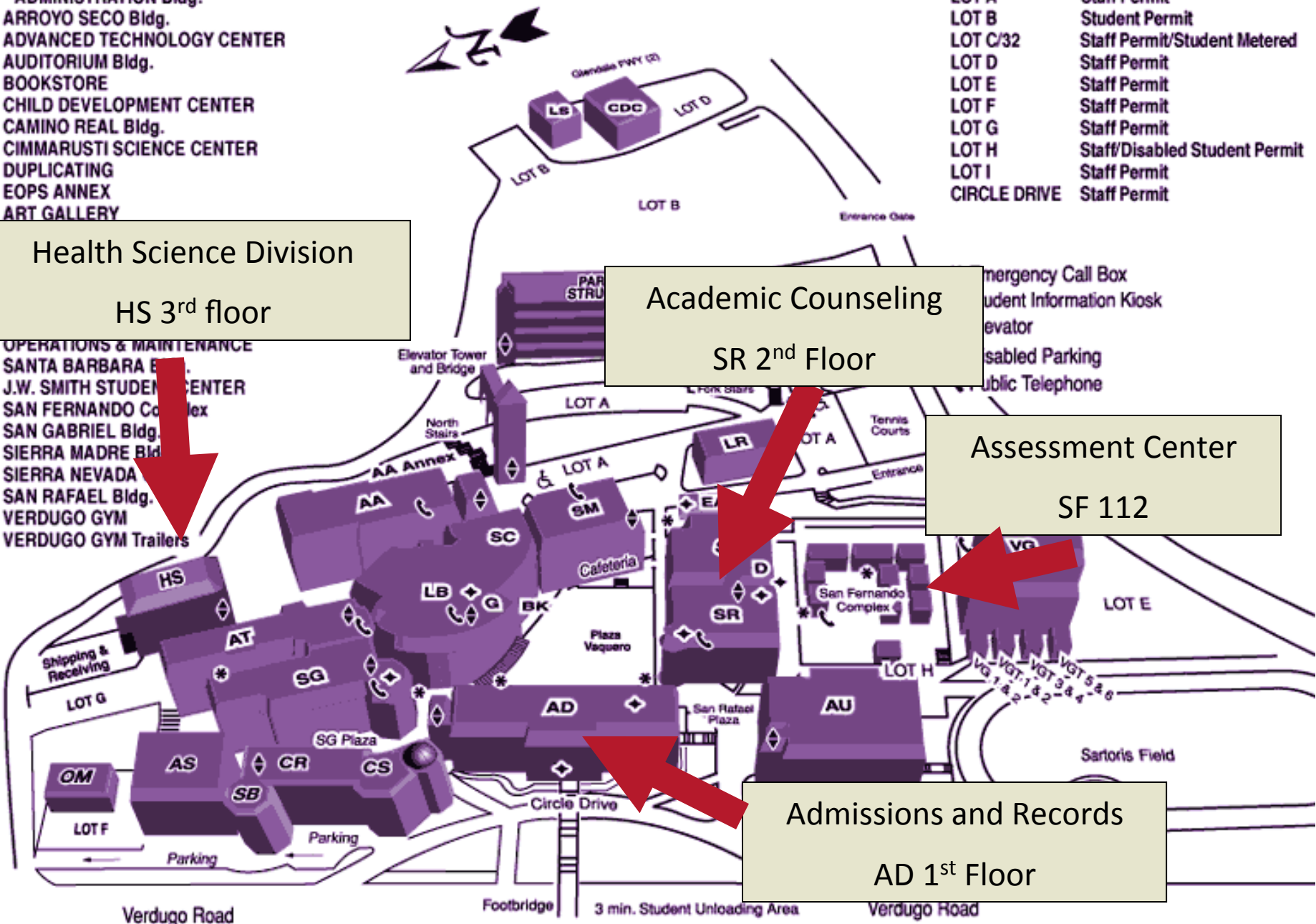
- | PARKING STRUCTURE | Permit Type |
|-------------------|-------------------------------|
| LOT A | Staff Permit |
| LOT B | Student Permit |
| LOT C/32 | Staff Permit/Student Metered |
| LOT D | Staff Permit |
| LOT E | Staff Permit |
| LOT F | Staff Permit |
| LOT G | Staff Permit |
| LOT H | Staff/Disabled Student Permit |
| LOT I | Staff Permit |
| CIRCLE DRIVE | Staff Permit |

Health Science Division
HS 3rd floor

Academic Counseling
SR 2nd Floor

Assessment Center
SF 112

Admissions and Records
AD 1st Floor



Verdugo Road

Footbridge

3 min. Student Unloading Area

Verdugo Road

Questions and Answers

Q1. May I apply to the Nursing program while still enrolled in prerequisite classes?

A1. **No! All classes must be completed and listed on an official transcript when you apply.**

Q2. Why I cannot apply while still enrolled in prerequisite classes?

A2. **In order to calculate the cut score, the Chancellor's formula requires grades from completed classes.**

Q3. Do I get to pick the hospitals and/or clinical times for training?

A3. **No! All hospital rotations and times are assigned by the department.**

Q4. If I took my classes at another college, may I apply to the GCC program without being a student?

A4. **Yes! You only need a GCC ID number if you want to schedule an appointment with a counselor.**

Q5. My Anatomy, Physiology and Microbiology classes total 13 units instead of the GCC-required 14 units. What do I do?

A5. **You need to successfully complete a college chemistry class with a lab if you have not done so.**

Q6. I took Physiology as an online course. Would you accept it?

A6. **No! We do not accept Anatomy, Physiology and Microbiology courses taken online.**

Q7. May I substitute a Biology course for Chemistry if I am short in units?

A7. **No! The GCC Nursing program will only accept a college chemistry course with a lab to make up the 14 semester or 21 quarter units required.**

Q8. My GPA is not very high but meets the minimum 2.0 required. Do I have a chance to get into the GCC nursing program?

A.8. **The selection process is based on the Chancellor's formula which uses four variables when calculating the cut score. There is no specific GPA, English grade, core science GPA, or number of repeats that will predict selection into the program.**

(cont. next page)

Questions and answers

Q9. What is the main reason someone may not get the cut score?

A9. **We find that higher grades in the overall GPA, core science courses GPA, and English grade along with the fewest science courses repeats will increase your chances of being selected.**

Q10. I am a transfer student from another nursing program. Will I be accepted into the program right away?

A10. **At this time we are not accepting transfer students due to funding cuts.**

Q11. Why do you take so few students when there is a nursing shortage?

A11. **Nursing programs cost more than other programs because there must be an instructor for every 10 students in a clinical setting. It means that, in order to teach a group of students, there must be four to five instructors in the clinical settings and one or two instructors to lecture. Additionally, hospitals may only accommodate a limited number of training groups. All southern California colleges and universities are sharing hospital sites for training based on the hospitals' own staffing resources.**

Q12. Do all nursing programs require the same classes?

A12. **No! Please visit the web site for each college to see what is required.**

Q13. If I do not get the cut score, what do I do? Am I shut out of becoming a nurse?

A13. **You will be referred to a counselor to develop a remediation plan and to get advisement of options.**

(cont. next page)

Questions and Answers

Q14. As an AB 540 student, may I apply without a Social Security number?

A14. **Currently, we do not accept applications from AB 540 students. However, students who are Deferred Action for Childhood Arrivals (DACA) eligible may receive a social security number and a work permit. You need a social security number to apply for the registered nurse license.**

Q15. Do I need to have letters of recommendations?

A15. **No! We do not accept any other documents beside those requested on the application. It would be a mistake to include anything else because it would look like you did not read the directions.**

Q16. What happens if I get the cut score but there is no room in the class?

A16. **You will be sent a letter which will instruct you to respond by email or in writing. The letter will ask if you want to be included in the next random selection.**

Q17. Do I need transcripts from all the colleges / universities I attended, or only from those where I completed the required courses?

A17. **By law, you must declare all college / universities you have attended and provide all transcripts with your application. If you do not submit all transcripts, you will not be included in the selection process and your application may be considered to be deceptive.**

Q18. I heard the nursing program is really hard. Is it true?

A18. **Yes! The nursing curriculum is extremely demanding and our students will tell you the program is ten times harder than any of the hardest science courses.**

Q19. Is it possible to work while I am in nursing school?

A19. **It is very difficult for students to work while they are enrolled in the program. One of the main reason students might not pass the courses or might even drop out of the program is because they are working too much.**
(cont. next page)

Questions and Answers

Q20. Is it possible to attend the nursing program part-time?

A20. **No! The nursing program requires your full-time commitment for two years.**

Q21. I will apply for the Career Ladder program, since I already have my LVN license. Is the selection criteria the same as for the Generic Nursing program?

A21. **Yes! In order to apply to the Career Ladder program you need a 2.0 GPA and you must have all prerequisite courses completed with a grade of "C" or better. You should also have already completed most of the general education course required for graduation. There will be no additional time to complete the graduation requirements, and you will not be able to take the NCLEX exam without a degree.**

The Career Ladder student is randomly selected only if there is space available.

The Career Ladder applicant is also required to meet the Chancellor's cut score criteria and take the T.E.A.S.

Q22. I am a foreign-trained nurse. Where do I start?

A22. **We will be accepting foreign-trained nurse graduates starting Summer/Fall 2015. For detailed information, please contact the nursing department and visit the nursing website at www.glendale.edu/nursing.**

Congratulations!

You have completed the online nursing info session.

Please print this page and complete the form below.
Bring this confirmation with you at your next appointment with the nursing counselor.

Call the Glendale College Academic Counseling at (818) 240-1000 ext. 5918 to schedule an appointment.

GCC ID#: _____

Name: _____

Counseling Appointment

Date: _____

Counselor: _____