



# **Student Success Scorecard 2014**

**Analysis of Student Success Scorecard  
Data for Glendale Community College**

*Corrected Data*

**May 14, 2014**

Research & Planning  
Glendale Community College  
1500 North Verdugo Road  
Glendale, California 91208  
<http://www.glendale.edu>

## Summary

The Student Success Scorecard (<http://scorecard.cccco.edu/scorecard.aspx>) is the accountability framework developed by the Chancellor's Office of the California Community Colleges and first published in April 2013. It includes 14 accountability indicators. This report is an analysis of the final 2014 scorecard data.

**For 12 of the 14 indicators, looking at the most recent data available, Glendale Community College's rate was higher than the statewide average.** For one of the remaining indicators (completion rate for students unprepared for college work), GCC's rate was the same as the statewide average. GCC's rate was below the statewide average for only one indicator, Career Development and College Preparation (CDCP) rate. Additionally, for one indicator, percentage of students completing 30 or more units for students prepared for college, Glendale Community College had the second highest rate in California.

The scorecard data show that, even though GCC exceeds the statewide average, the college still has room for improvement, particularly in improving the success of students underprepared for college work.

This report includes corrected data. The Chancellor's Office informed colleges on May 9, 2014 that historical data on completion rate were corrected after the initial release of the Scorecard data on April 15, 2014.

## About the Scorecard

The Student Success Scorecard, proposed by the Student Success Task Force recommendations published in 2012, is an extension of the ARCC (Accountability Reporting for Community Colleges) system. The indicators are similar to the ARCC indicators, but several changes have been made. In addition to changes in the measures, the scorecard provides a wealth of new information about student success by providing data on each indicator by gender, age, and ethnic group.

This report is an analysis of the scorecard indicators for Glendale Community College. It shows how GCC ranks in relation to other colleges. Specifically, this report compares GCC's indicators with the statewide average, the average for community colleges in GCC's local region, and the average for community colleges in the peer group defined by the Chancellor's Office. (Note that colleges are placed into only one peer group for scorecard data; in the ARCC system, colleges were placed into a different peer group for each indicator.)

The 14 colleges in GCC's local region (Region 7) are Compton College (El Camino College Compton Center), East Los Angeles College, El Camino College, Glendale Community College, Los Angeles City College, Los Angeles Harbor College, Los Angeles Mission College, Los Angeles Pierce College, Los Angeles Southwest College, Los Angeles Trade-Technical College, Los Angeles Valley College, Pasadena City College, Santa Monica College, and West Los Angeles College.

The 20 colleges in GCC's peer group, as defined by the Chancellor's Office, are Cuesta, Cypress, De Anza, Diablo Valley, Folsom Lake, Fullerton, Glendale, Golden West, LA Pierce, Las Positas, Mira Costa, Moorpark, Ohlone, Orange Coast, Palomar, Pasadena, San Diego Mesa, Santa Barbara, Sierra, and Skyline. The peer grouping was changed in 2014, so this group of colleges is different from the group reported in previous years. GCC's peer group for 2014 is the largest peer group and it is a peer group with high average indicator rates. For nine of the 14 indicators, GCC's peer group had the highest average indicator rate among the seven peer groups, and for another four indicators, GCC's peer group had the second highest average. In other words, for 13 of the 14 indicators, GCC's peer group was either first or second among the seven peer groups.

## Overall Performance Rankings

The table below shows how GCC ranks for each of the measures when compared to the statewide average, the local region average, and the peer group average. Low numbers are better: A rank of one indicates the college ranks the highest in the comparison group. All data are for the 2007-2008 entering cohort of students who were tracked through 2012-2013, the most recent data available.

Note that GCC's peer group changed in 2014 (see page 2); GCC's ranking among its peer group is lower than among previous peer groups for most of the indicators. GCC's new peer group is highly successful on these indicators, with the peer group average ranking first or second among the seven new peer groups for 13 of the 14 indicators.

Persistence Rate (Overall)	Persistence Rate (Prepared Students)	Persistence Rate (Unprepared Students)
GCC Rank in State: 6 <sup>th</sup> out of 111  GCC Rank in Peer Group: 5 <sup>th</sup> out of 20  GCC Rank in Region: 1 <sup>st</sup> out of 14	GCC Rank in State: 11 <sup>th</sup> out of 111  GCC Rank in Peer Group: 6 <sup>th</sup> out of 20  GCC Rank in Region: 2 <sup>nd</sup> out of 14	GCC Rank in State: 9 <sup>th</sup> out of 111  GCC Rank in Peer Group: 5 <sup>th</sup> out of 20  GCC Rank in Region: 1 <sup>st</sup> out of 14
At Least 30 Units Rate (Overall)	At Least 30 Units Rate (Prepared Students)	At Least 30 Units Rate (Unprepared Students)
GCC Rank in State: 3 <sup>rd</sup> out of 111  GCC Rank in Peer Group: 3 <sup>rd</sup> out of 20  GCC Rank in Region: 1 <sup>st</sup> out of 14	GCC Rank in State: 2 <sup>nd</sup> out of 111  GCC Rank in Peer Group: 2 <sup>nd</sup> out of 20  GCC Rank in Region: 1 <sup>st</sup> out of 14	GCC Rank in State: 11 <sup>th</sup> out of 111  GCC Rank in Peer Group: 5 <sup>th</sup> out of 20  GCC Rank in Region: 1 <sup>st</sup> out of 14

<b>Completion Rate (Overall)</b>	<b>Completion Rate (Prepared Students)</b>	<b>Completion Rate (Unprepared Students)</b>
<p>GCC Rank in State: 21<sup>st</sup> out of 111</p> <p>GCC Rank in Peer Group: 10<sup>th</sup> out of 20</p> <p>GCC Rank in Region: 1<sup>st</sup> out of 14</p>	<p>GCC Rank in State: 21<sup>st</sup> out of 111</p> <p>GCC Rank in Peer Group: 8<sup>th</sup> out of 20</p> <p>GCC Rank in Region: 3<sup>rd</sup> out of 14</p>	<p>GCC Rank in State: 40<sup>th</sup> out of 111</p> <p>GCC Rank in Peer Group: 18<sup>th</sup> out of 20</p> <p>GCC Rank in Region: 3<sup>rd</sup> out of 14</p>

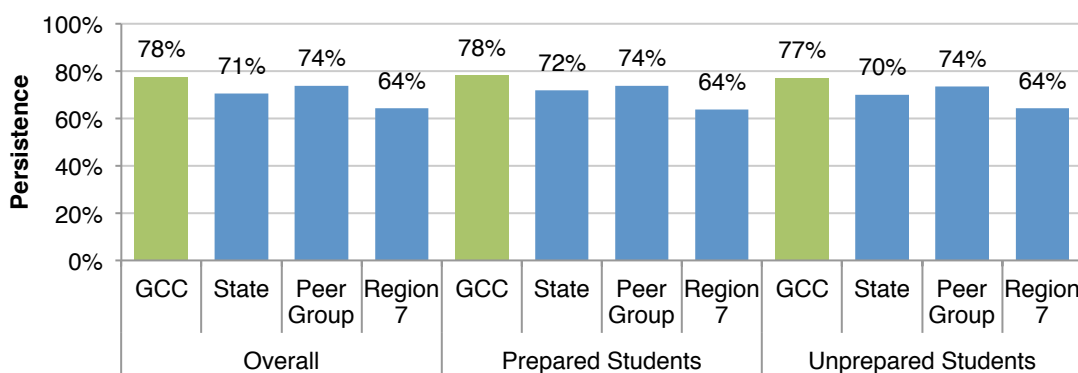
<b>Remedial Math Rate</b>	<b>Remedial English Rate</b>	<b>Remedial ESL Rate</b>
<p>GCC Rank in State: 30<sup>th</sup> out of 110</p> <p>GCC Rank in Peer Group: 11<sup>th</sup> out of 20</p> <p>GCC Rank in Region: 3<sup>rd</sup> out of 14</p>	<p>GCC Rank in State: 15<sup>th</sup> out of 110</p> <p>GCC Rank in Peer Group: 9<sup>th</sup> out of 20</p> <p>GCC Rank in Region: 1<sup>st</sup> out of 14</p>	<p>GCC Rank in State: 24<sup>th</sup> out of 103</p> <p>GCC Rank in Peer Group: 8<sup>th</sup> out of 20</p> <p>GCC Rank in Region: 3<sup>rd</sup> out of 14</p>

<b>Career Technical Education (CTE) Rate</b>	<b>Career Development and College Preparation (CDCP Rate)</b>
<p>GCC Rank in State: 30<sup>th</sup> out of 110</p> <p>GCC Rank in Peer Group: 12<sup>th</sup> out of 20</p> <p>GCC Rank in Region: 5<sup>th</sup> out of 14</p>	<p>GCC Rank in State: 18<sup>th</sup> out of 41</p> <p>GCC Rank in Peer Group: 1<sup>st</sup> out of 5</p> <p>GCC Rank in Region: 6<sup>th</sup> out of 9</p>

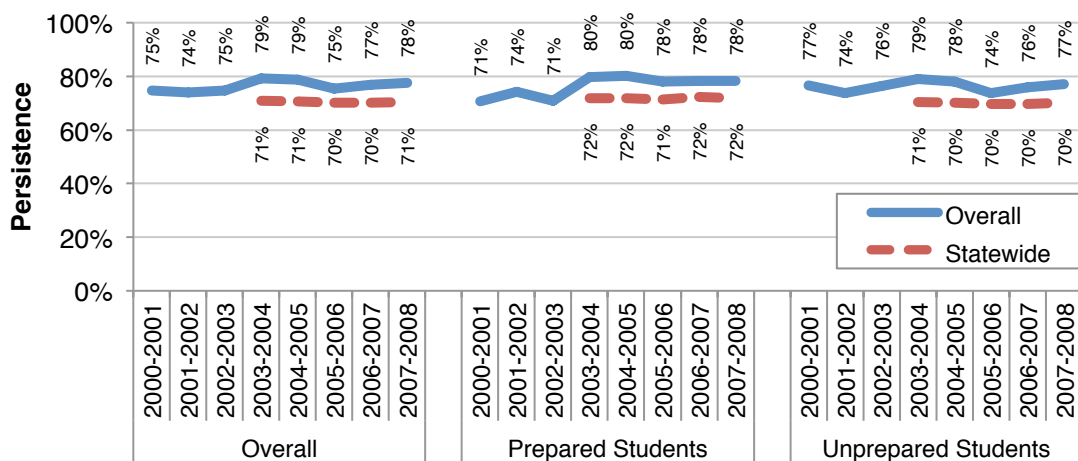
## Persistence Rate Indicator

Persistence Rate tracks first-time students who earned at least 6 units and attempted any Math or English within three years of entry. Persistence Rate is the percentage of these students who enrolled in three consecutive semesters anywhere in the California community college system (e.g., if a student started in Fall 2006, then enrolled in Spring 2007 and Fall 2007, that student would be counted as a persister, but if the student only enrolled in Spring 2007 and not Fall 2007, the student would not be counted as a persister). Students are separated into Prepared (first English and Math courses were college-level) or Unprepared (first English or Math course was below college level) groups. The data below are from the cohort of students entering in 2007-2008 and tracked through 2012-2013.

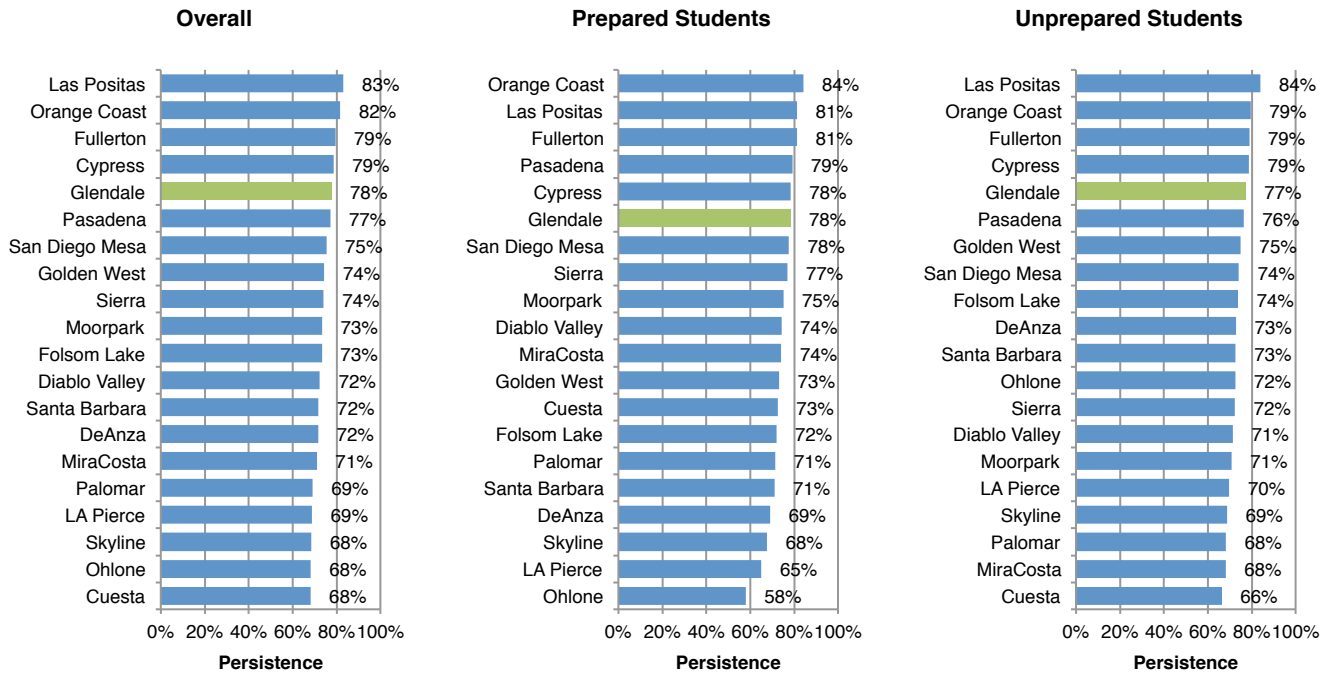
**Persistence Rate, 2007-2008 Entering Cohort**



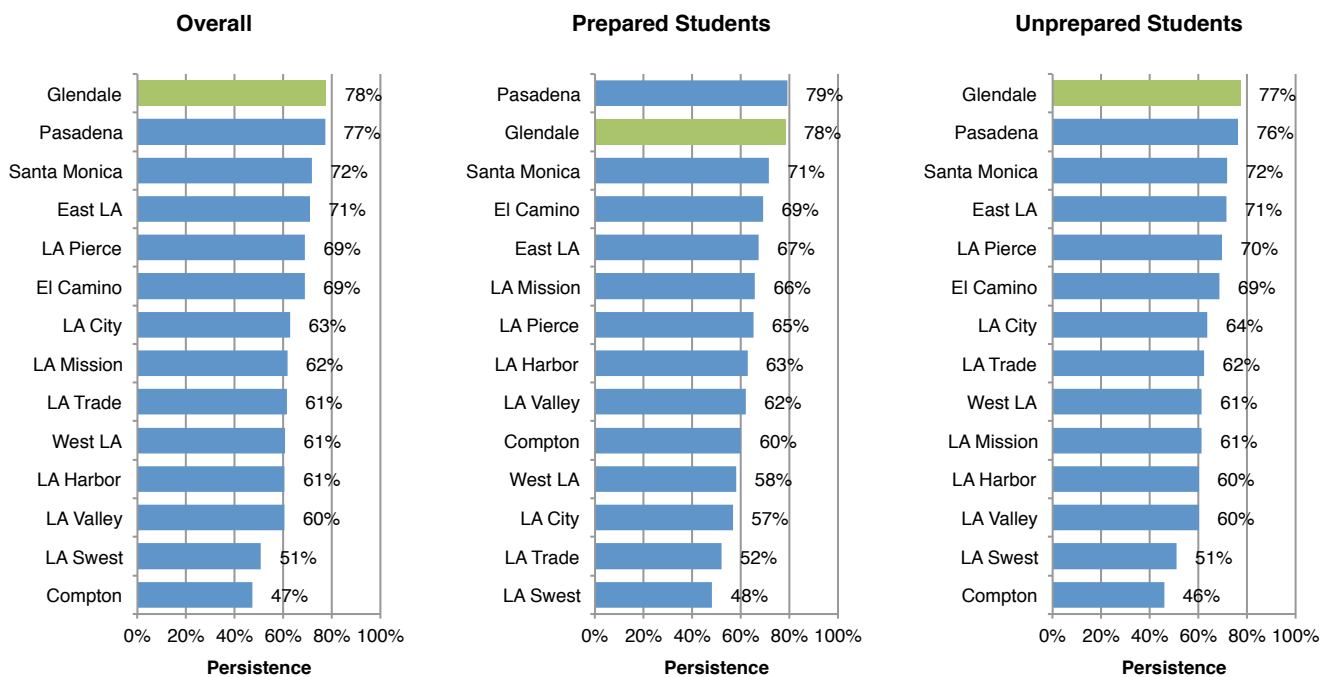
**Persistence Rate, GCC Trends**



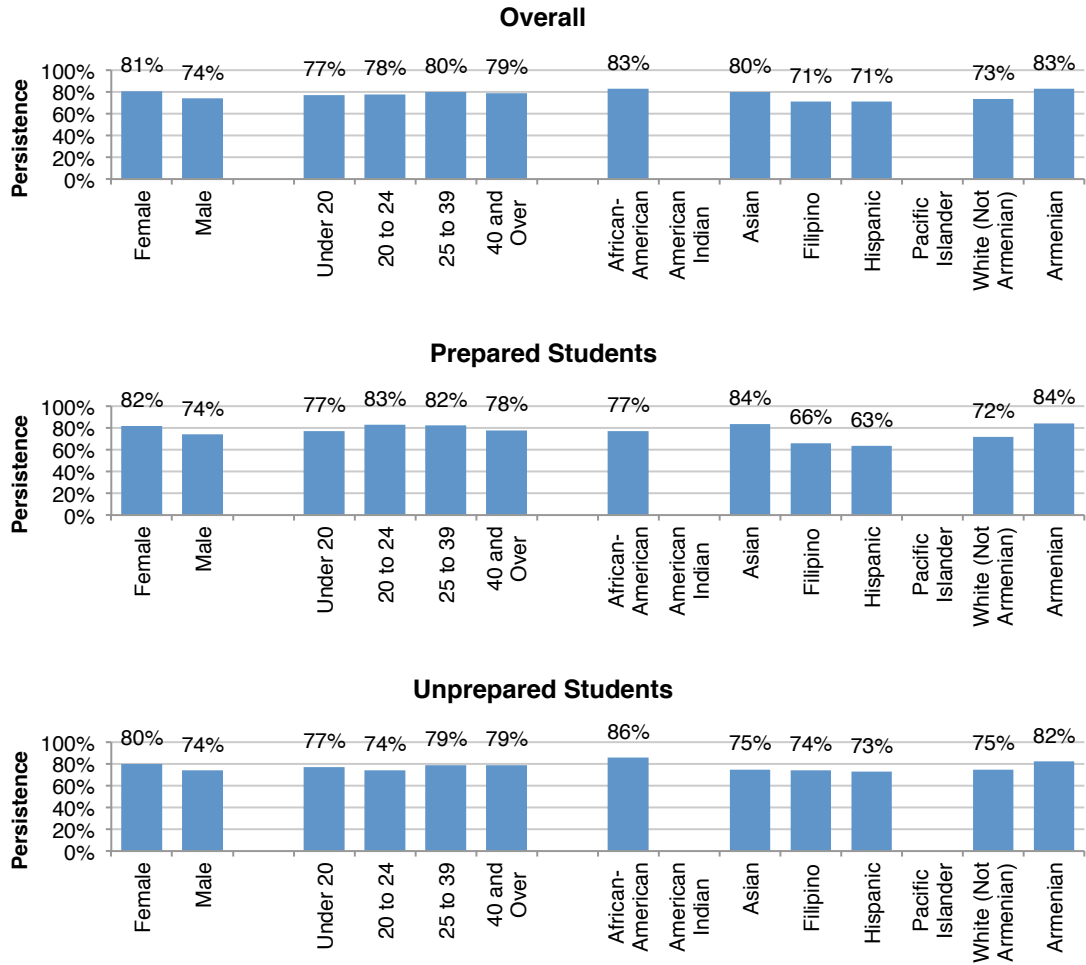
### Persistence Rate, Peer Group Data, 2007-2008 Entering Cohort



### Persistence Rate, Region 7 Data, 2007-2008 Entering Cohort



### Persistence Rate by Student Group, 2007-2008 Entering Cohort



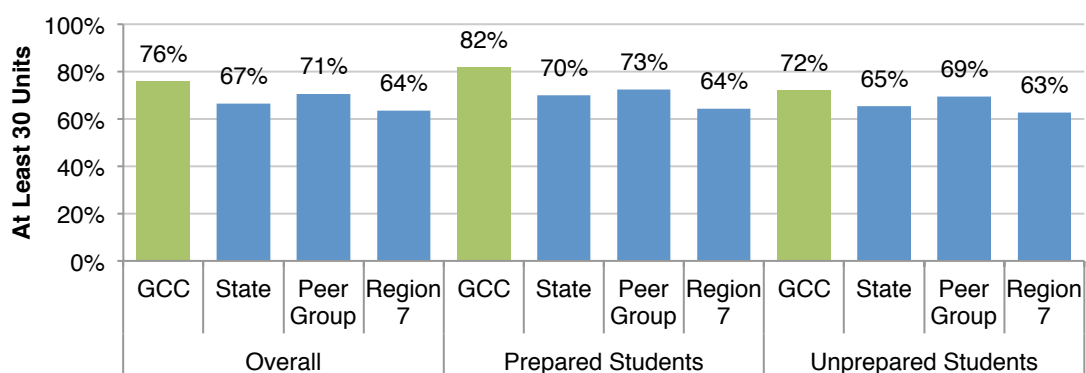
Note: Rates for American Indian/Alaska Natives and Pacific Islanders are not shown because they are based on student groups of less than 10 students.



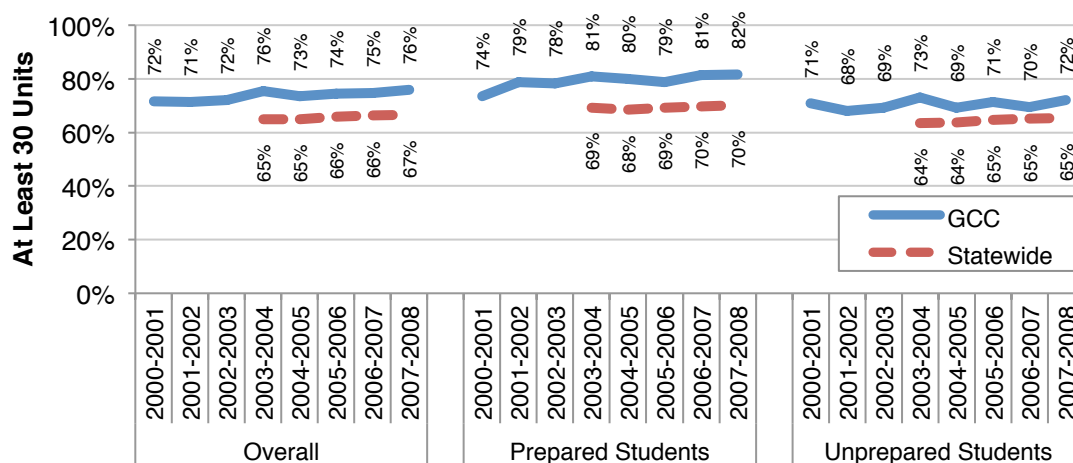
## At Least 30 Units Rate Indicator

At Least 30 Units Rate tracks first-time students who earned at least 6 units and attempted any Math or English within three years of entry. At Least 30 Units Rate is the percentage of these students who, within six years of entry, earned at least 30 units anywhere in the California community college system. Students are separated into Prepared (first English and Math courses were college-level) or Unprepared (first English or Math course was below college level) groups. The data below are from the cohort of students entering in 2007-2008 and tracked through 2012-2013.

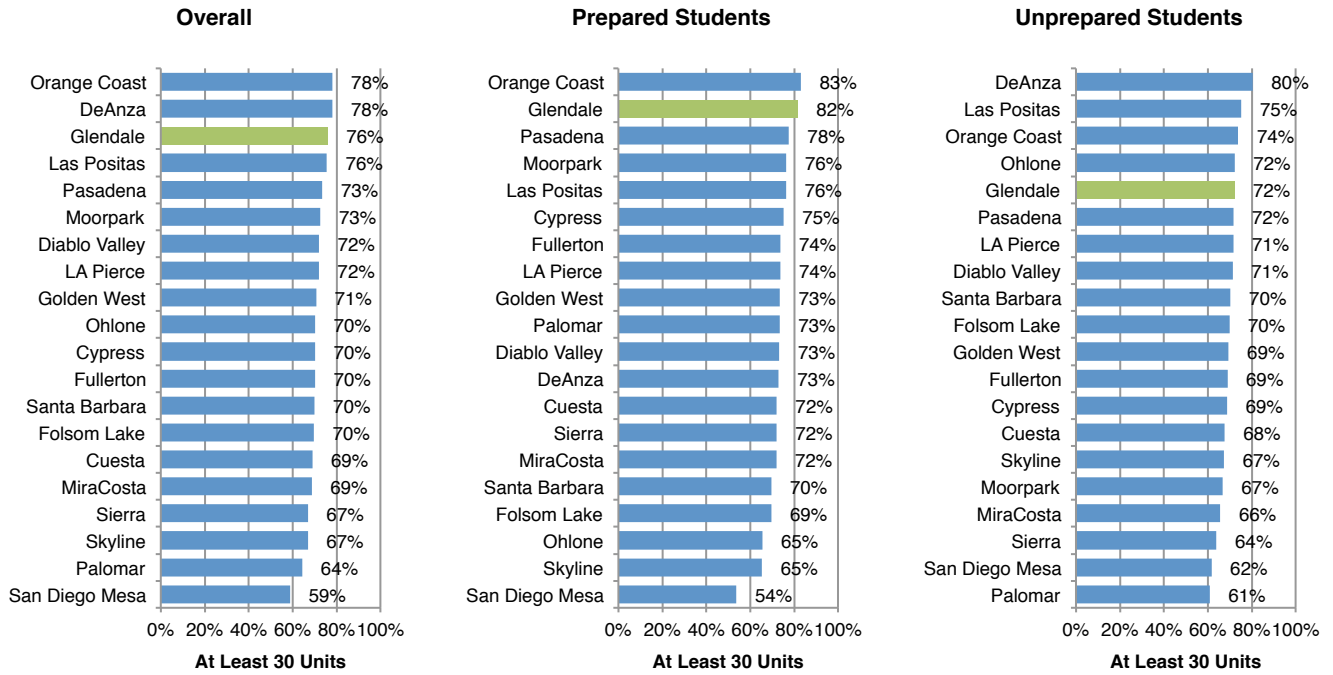
### At Least 30 Units Rate, 2007-2008 Entering Cohort



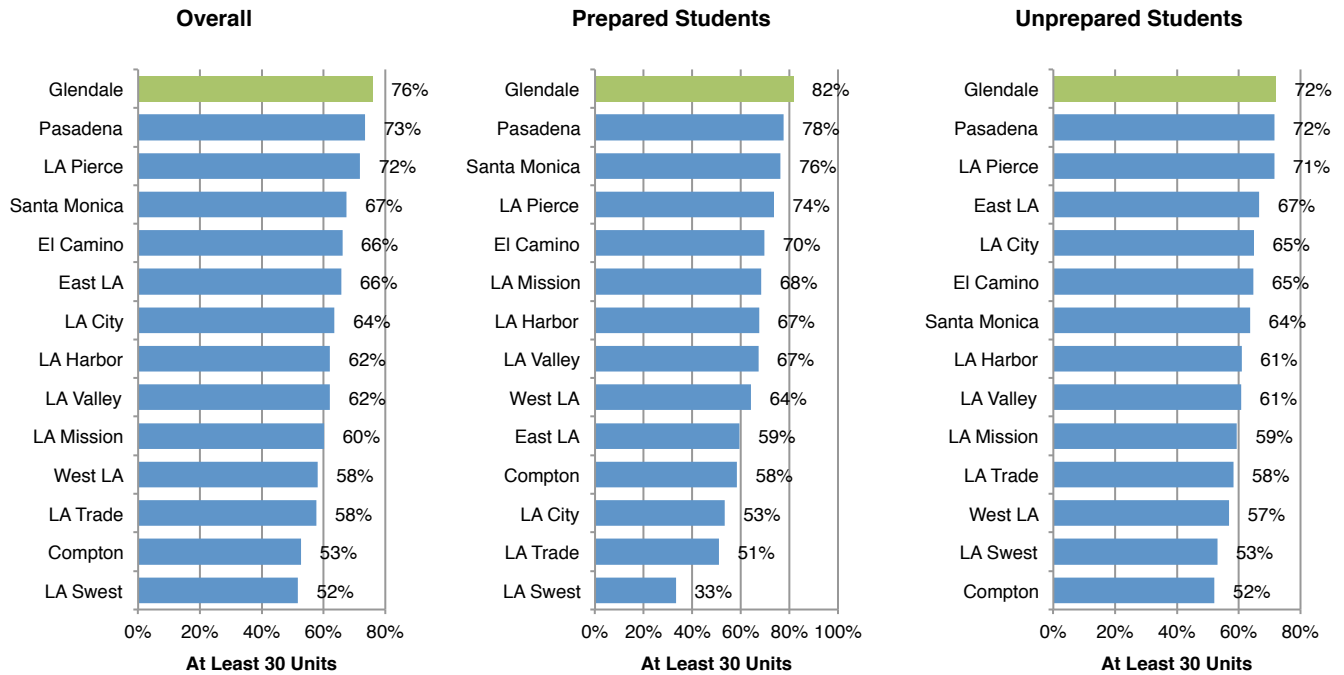
### At Least 30 Units Rate, GCC Trends



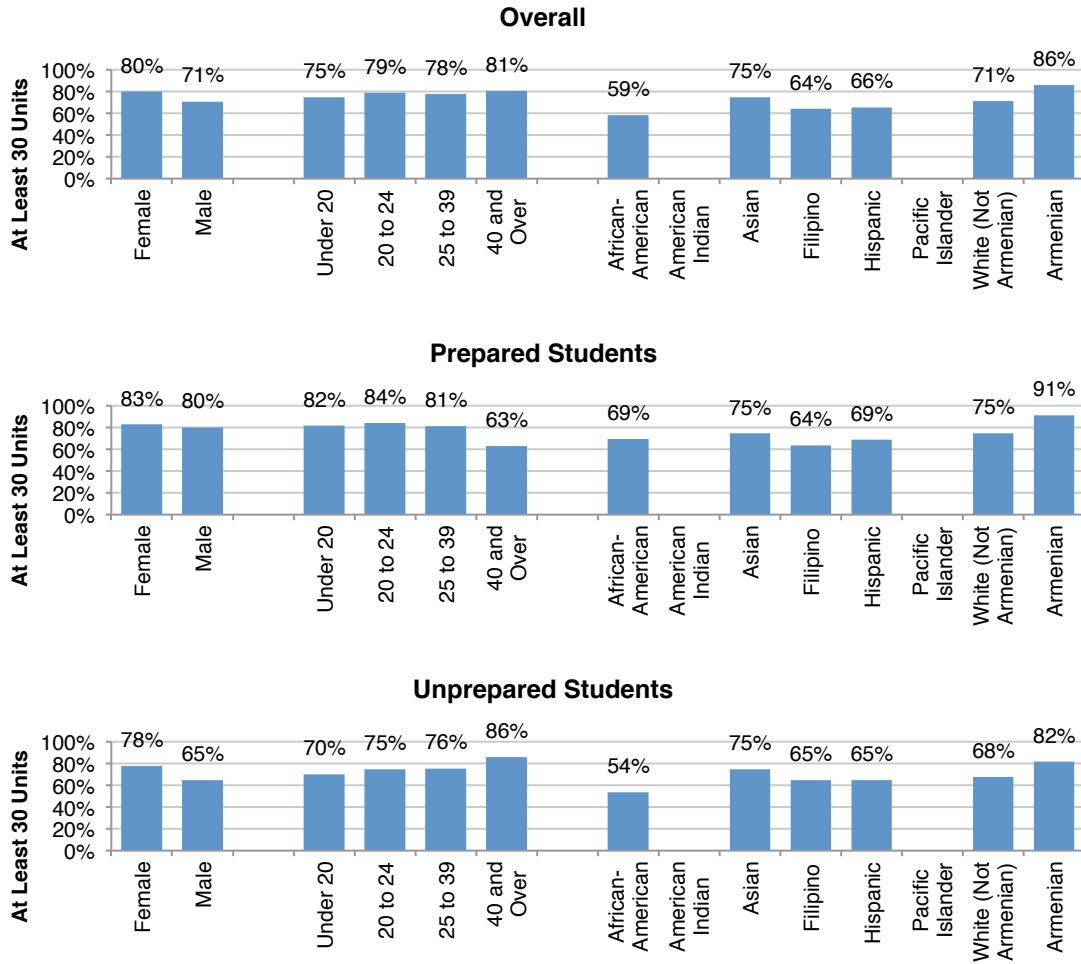
### At Least 30 Units Rate, Peer Group Data, 2007-2008 Entering Cohort



### At Least 30 Units Rate, Region 7 Data, 2007-2008 Entering Cohort



### At Least 30 Units Rate by Student Group, 2007-2008 Entering Cohort

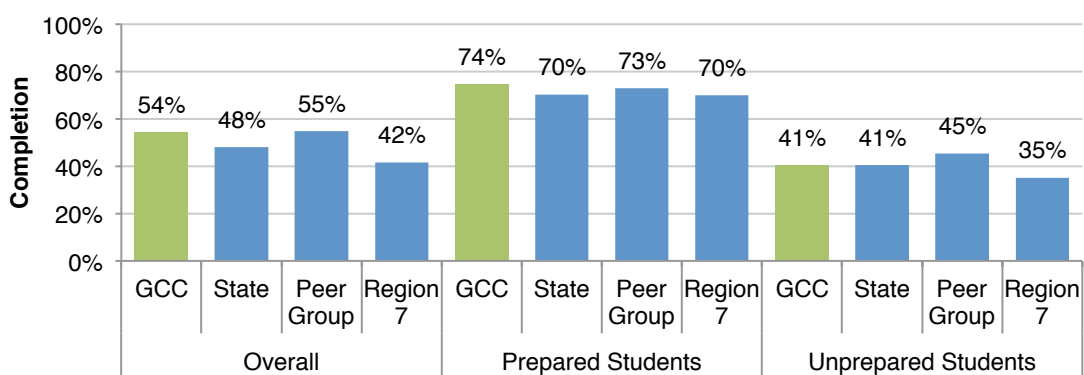


Note: Rates for American Indian/Alaska Natives and Pacific Islanders are not shown because they are based on student groups of less than 10 students.

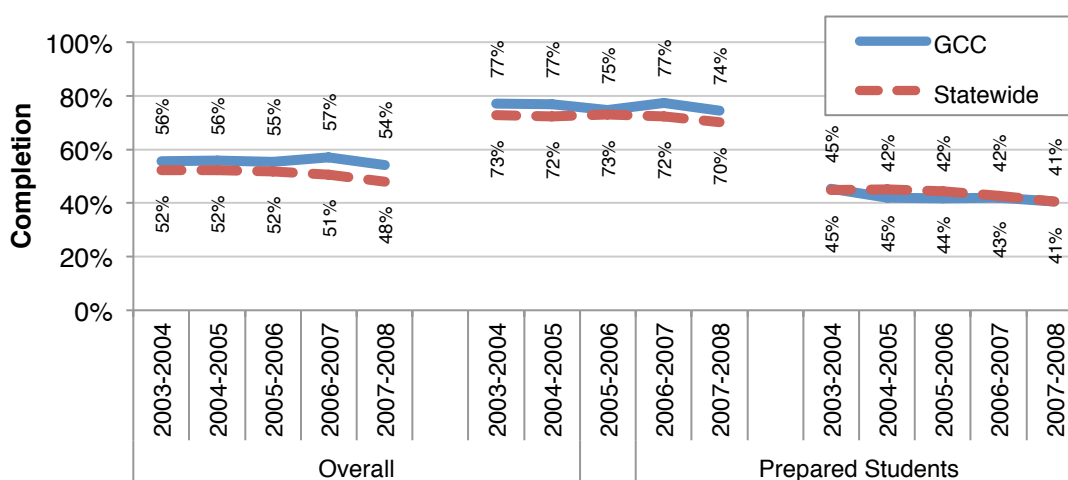
## Completion Rate Indicator

Completion Rate, also known as Student Progress and Attainment Rate or SPAR, tracks first-time students who earned at least 6 units and attempted any Math or English within three years of entry. Completion Rate is the percentage of these students who, within six years of entry, earned a degree or certificate, or transferred, or became “transfer prepared” by completing 60 or more transferable units with a GPA of 2.0 or higher. Students are separated into Prepared (first English and Math courses were college-level) or Unprepared (first English or Math course was below college level) groups. The data below are from the cohort of students entering in 2007-2008 and tracked through 2012-2013.

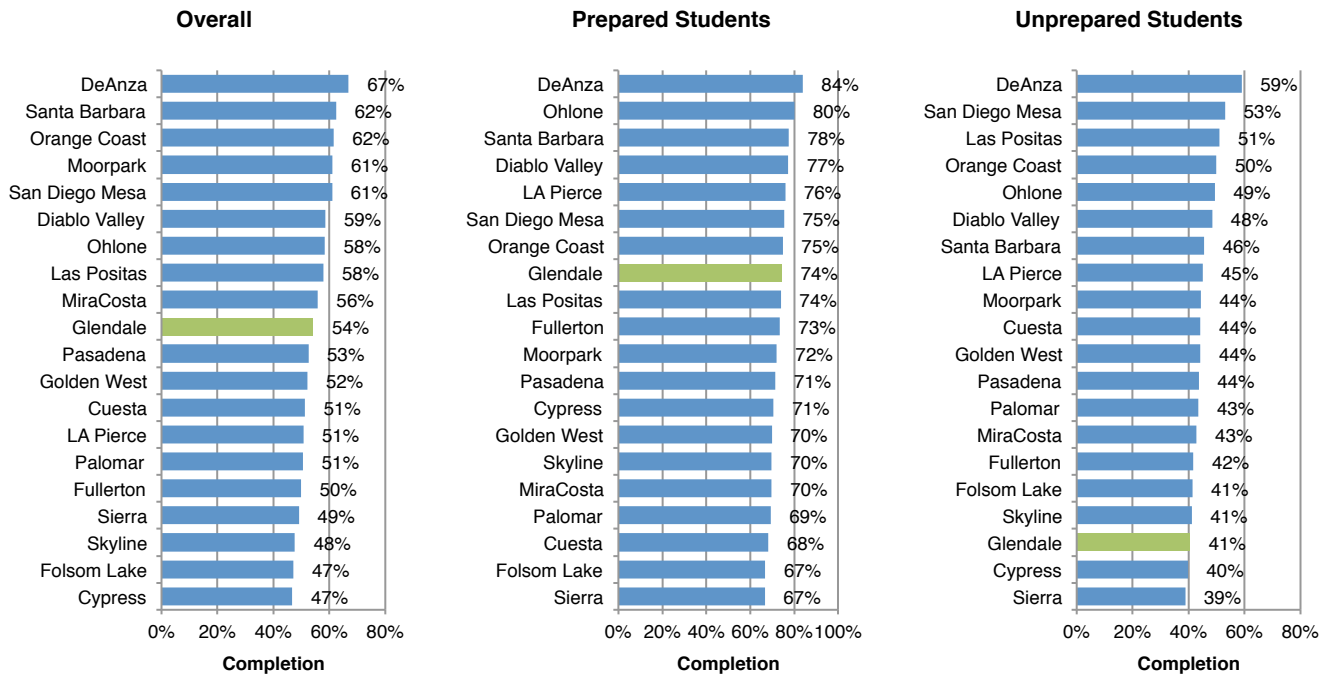
### Completion Rate, 2007-2008 Entering Cohort



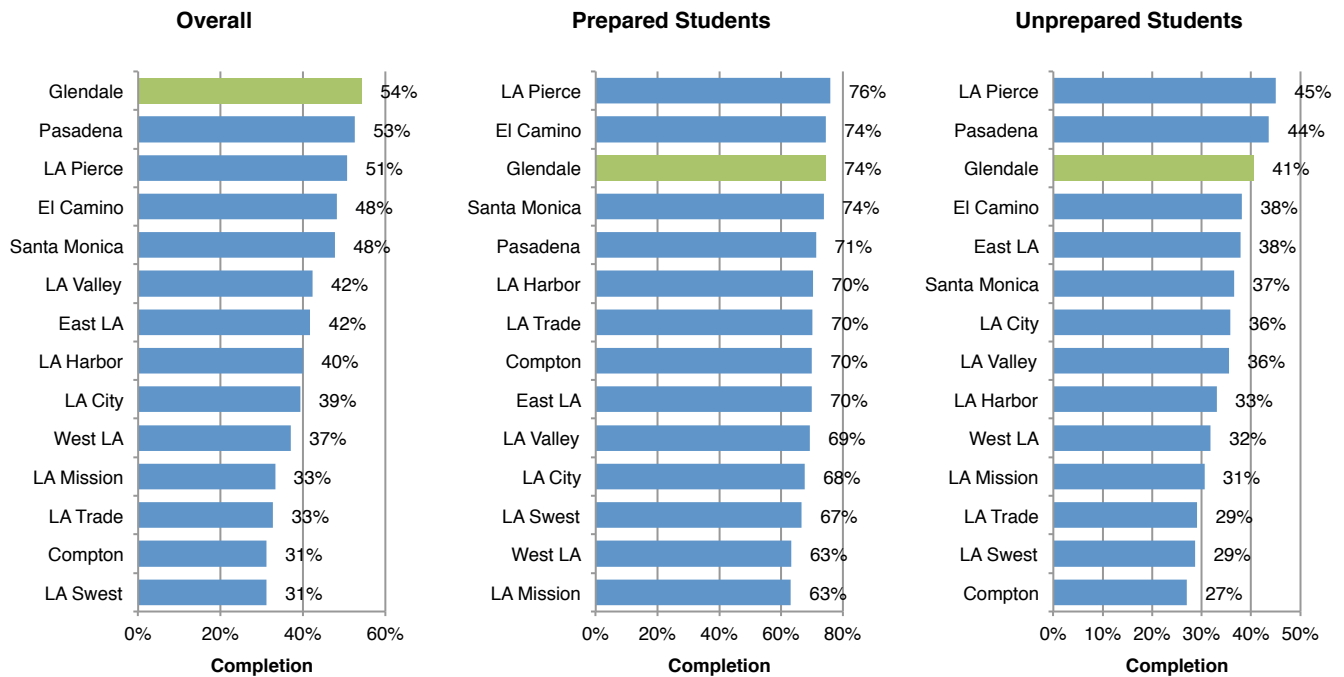
### Completion Rate, GCC Trends



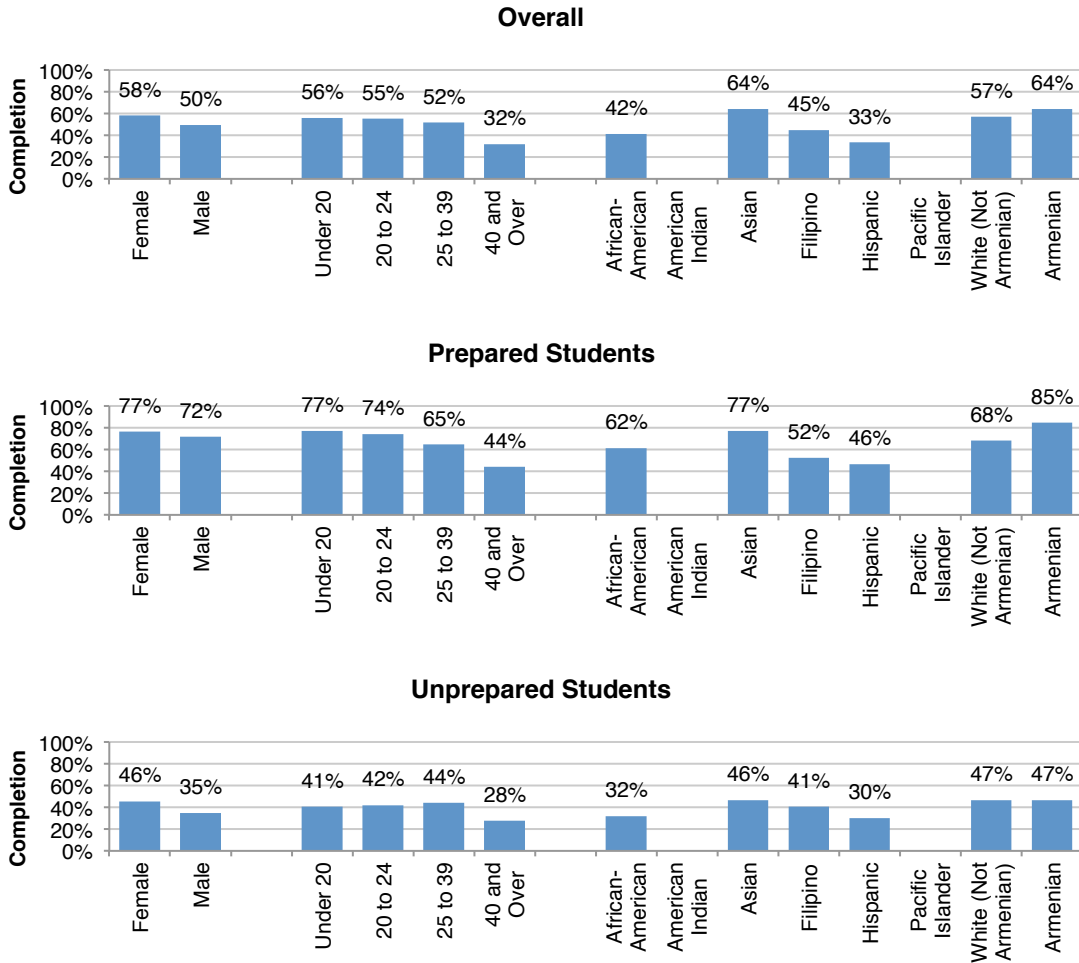
### Completion Rate, Peer Group Data, 2007-2008 Entering Cohort



### Completion Rate, Region 7 Data, 2007-2008 Entering Cohort



### Completion Rate by Student Group, 2007-2008 Entering Cohort

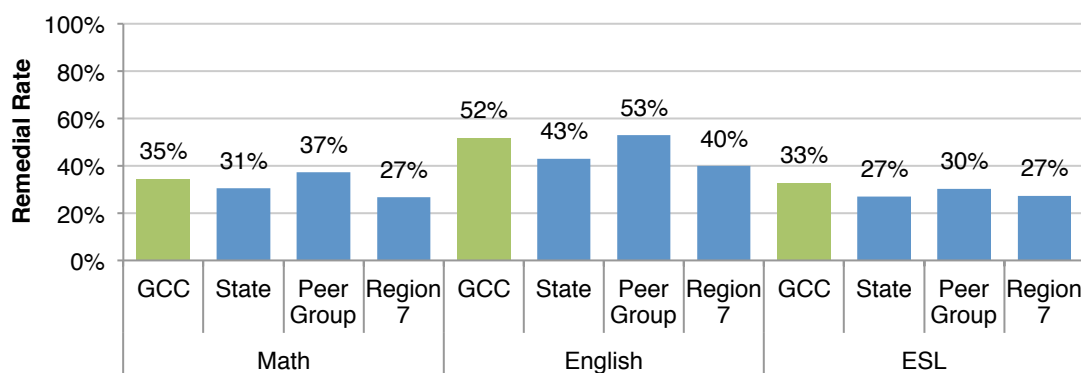


Note: Rates for American Indian/Alaska Natives and Pacific Islanders are not shown because they are based on student groups of less than 10 students.

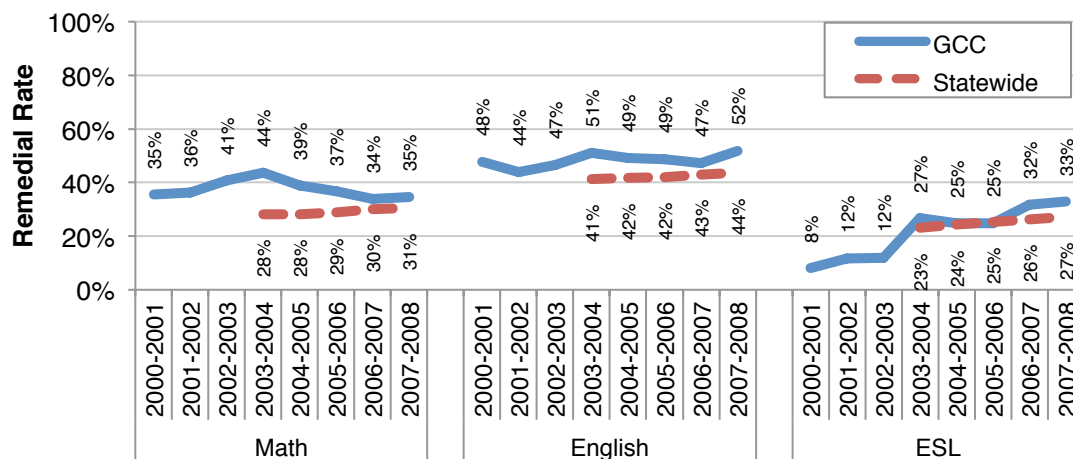
## Remedial Progress Rate Indicators

The three Remedial Progress Rates track students in Mathematics, English, and ESL. For Mathematics, students who attempted a course two to four levels below transfer level were tracked, and students were counted as successfully progressing if they passed a college-level Math course (one level below transfer level) within six years. For English, students who attempted an English writing course one to four levels below transfer level were tracked, and students were counted as successfully progressing if they passed a transfer-level English course within six years. For ESL, students who attempted any ESL course below transfer-level English were tracked, and students were counted as successfully progressing if they passed transfer-level English.

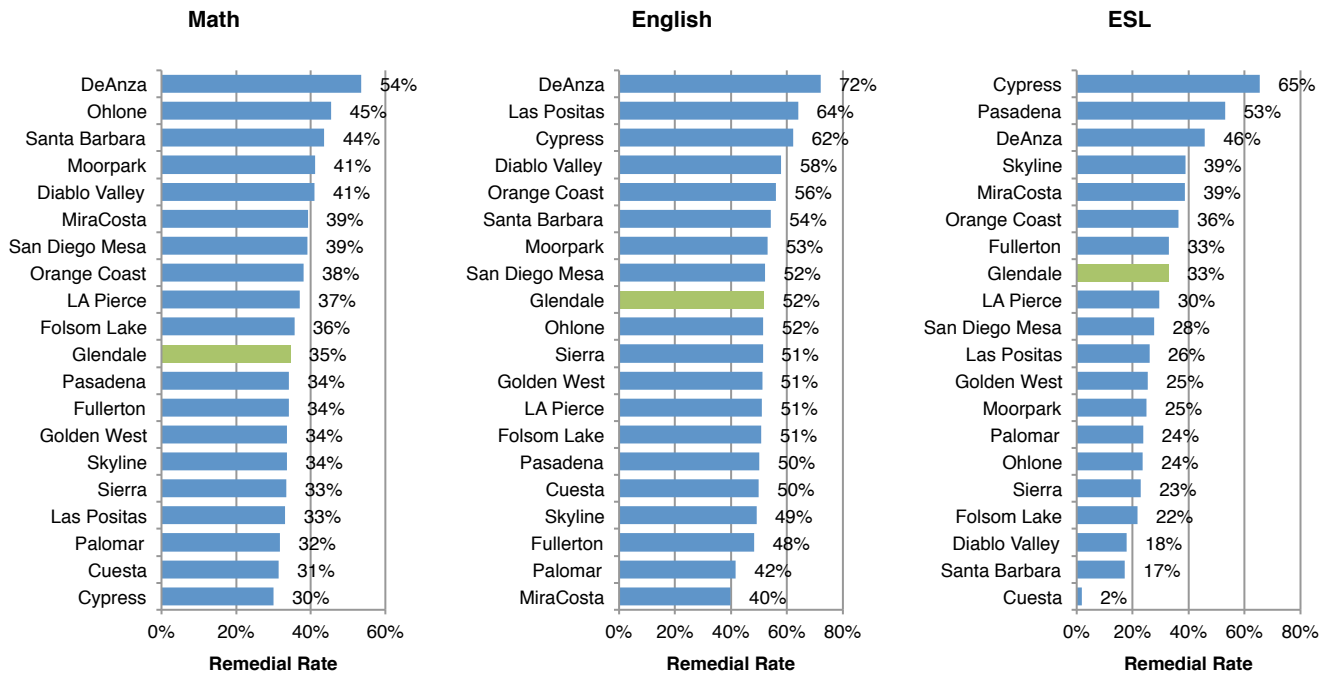
**Remedial Progress Rates, 2007-2008 Entering Cohort**



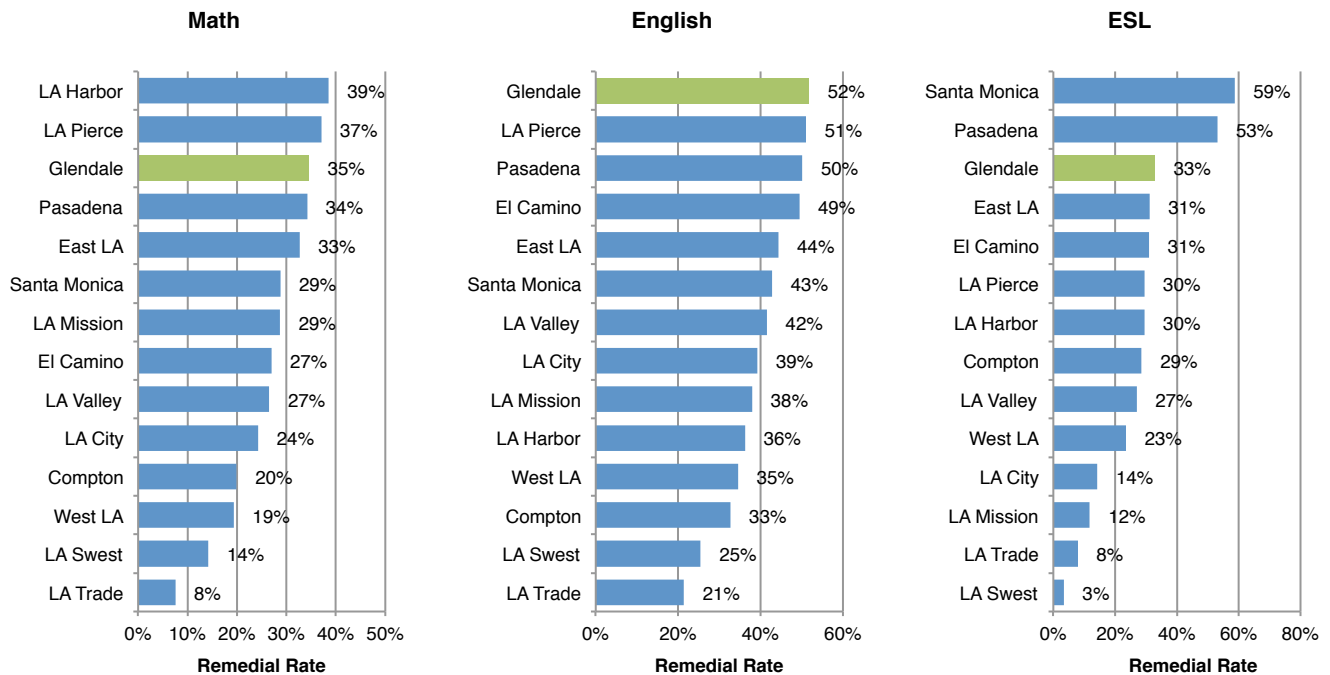
**Remedial Progress Rates, GCC Trends**



### Remedial Progress Rates, Peer Group Data, 2007-2008 Entering Cohort

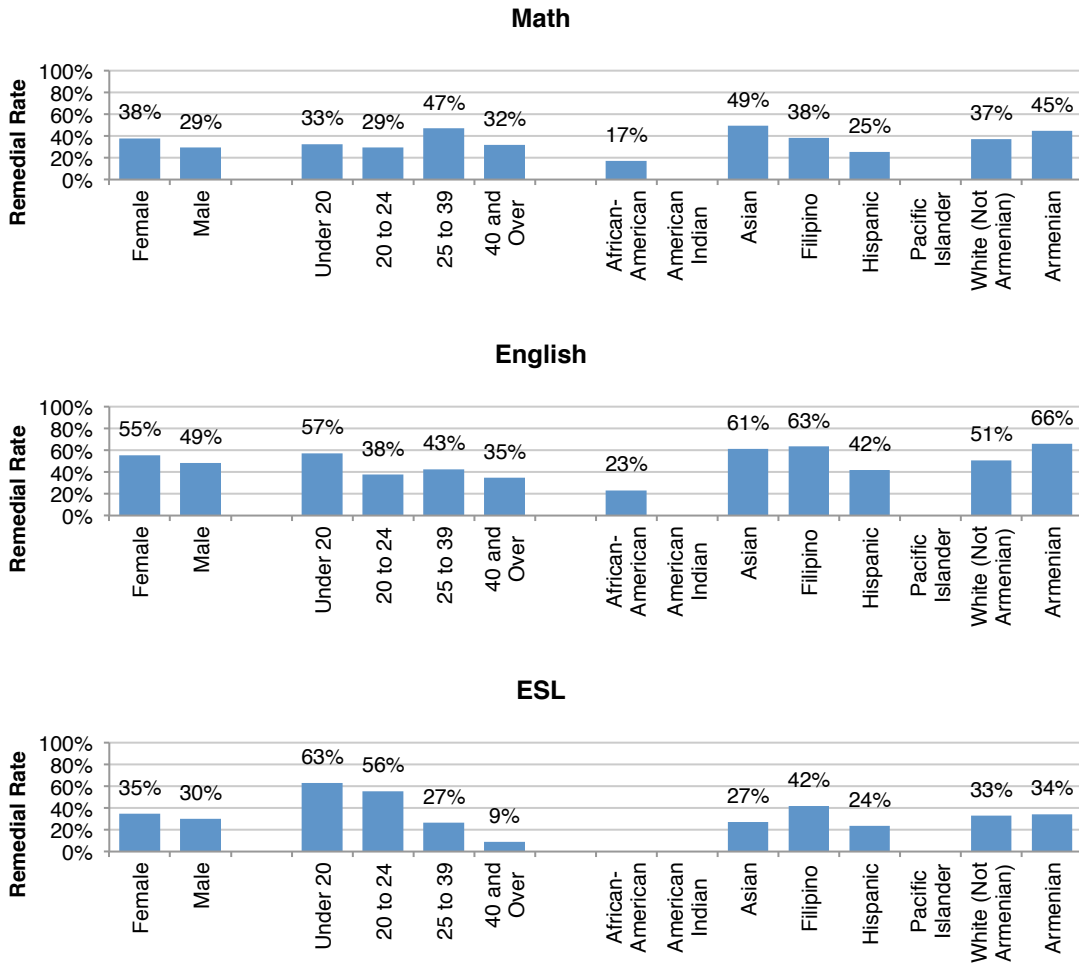


### Remedial Progress Rates, Region 7 Data, 2007-2008 Entering Cohort





## Remedial Progress Rates by Student Group, 2007-2008 Entering Cohort

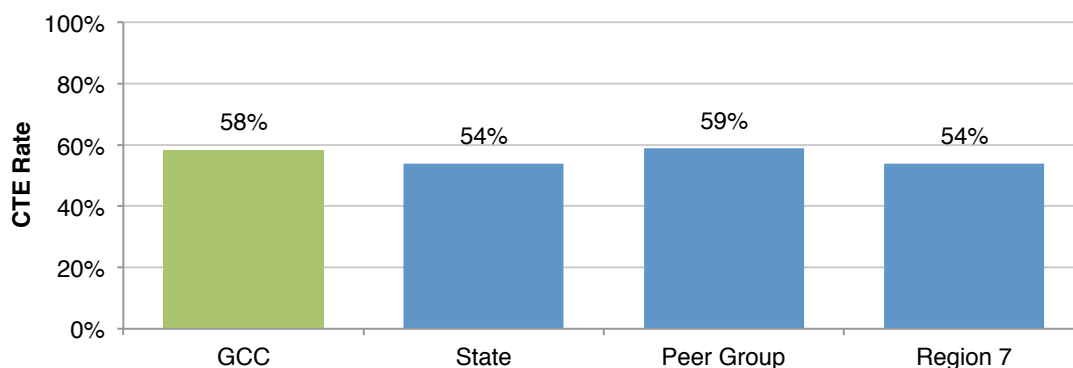


Note: Rates for African-Americans, American Indian/Alaska Natives and Pacific Islanders are not shown because they are based on student groups of less than 10 students.

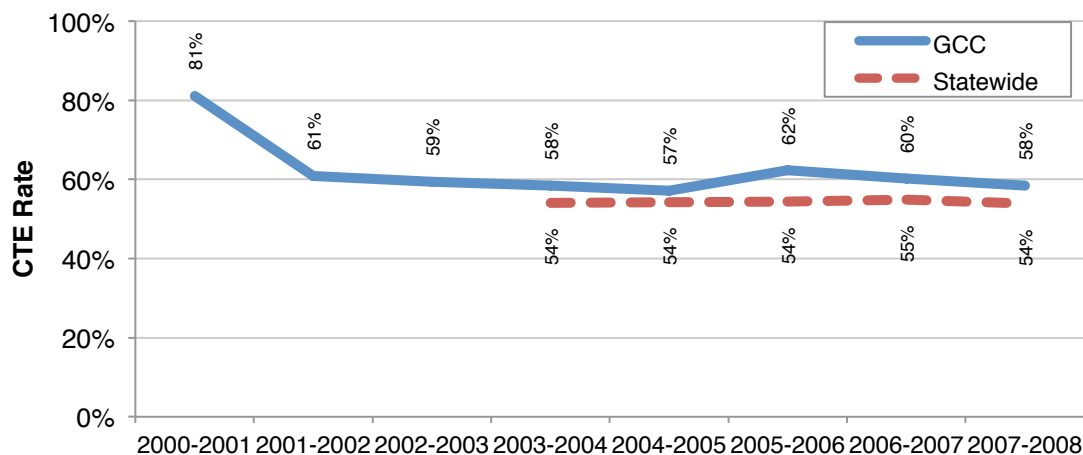
## Career Technical Education (CTE) Rate Indicator

The CTE Rate tracks students completing a CTE course for the first time and completing at least 8 units in the subsequent three years in a single CTE discipline, including at least one occupational courses as defined by SAM code B or C. CTE rate is the percentage of these students who, within six years of entry, earned a degree or certificate, transferred to a four-year institution, or achieved transfer prepared status by completing 60 or more transferable units with a GPA of 2.0 or higher.

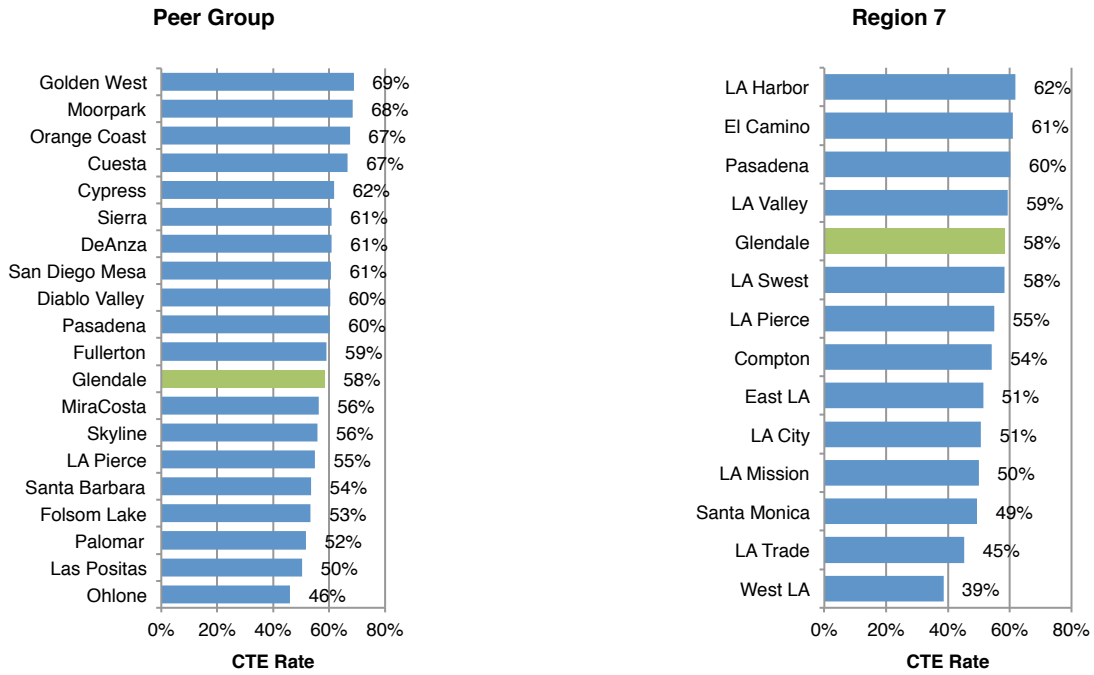
**CTE Rate, 2007-2008 Entering Cohort**



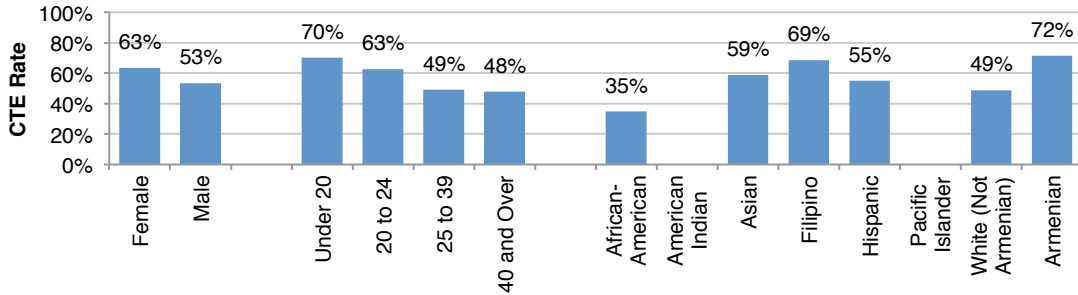
**CTE Rate, GCC Trends**



### CTE Rate, 2007-2008 Entering Cohort



### CTE Rate by Student Group, 2007-2008 Entering Cohort

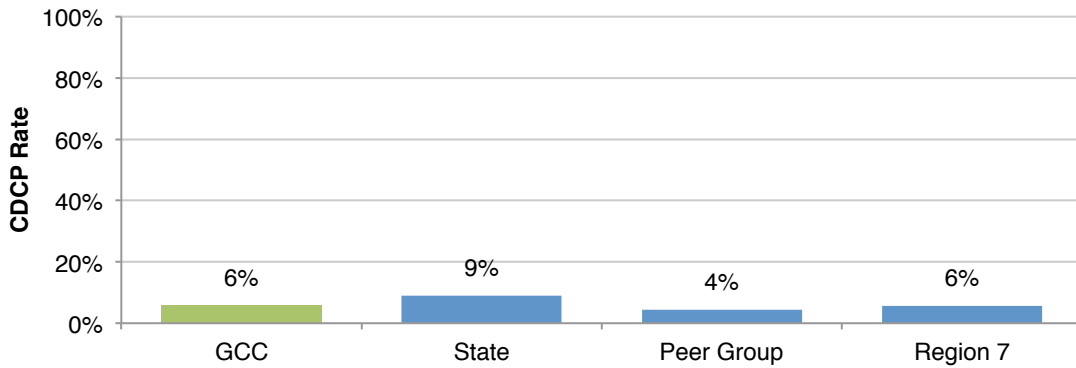


Note: Rates for American Indian/Alaska Natives and Pacific Islanders are not shown because they are based on student groups of less than 10 students.

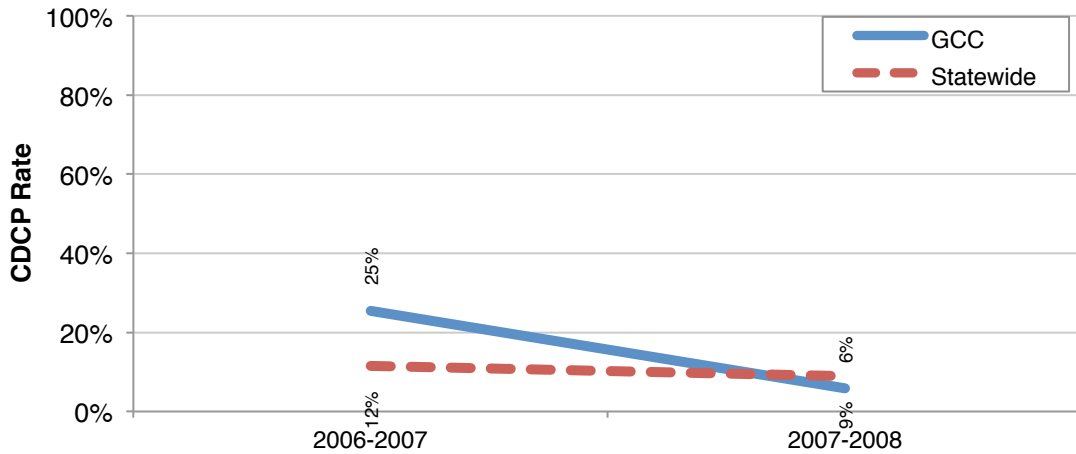
## Career Development and College Preparation (CDCP) Rate Indicator

The CDCP Rate tracks students who attempted two or more noncredit CDCP courses, with a minimum of 4 attendance hours in each of these courses, within three years. CDCP Rate is the percentage of these students who, within six years of entry, earned a CDCP certificate or a credit degree or certificate, transferred to a four-year institution, or became transfer prepared by completing at least 60 transferable units with a GPA of 2.0 or higher.

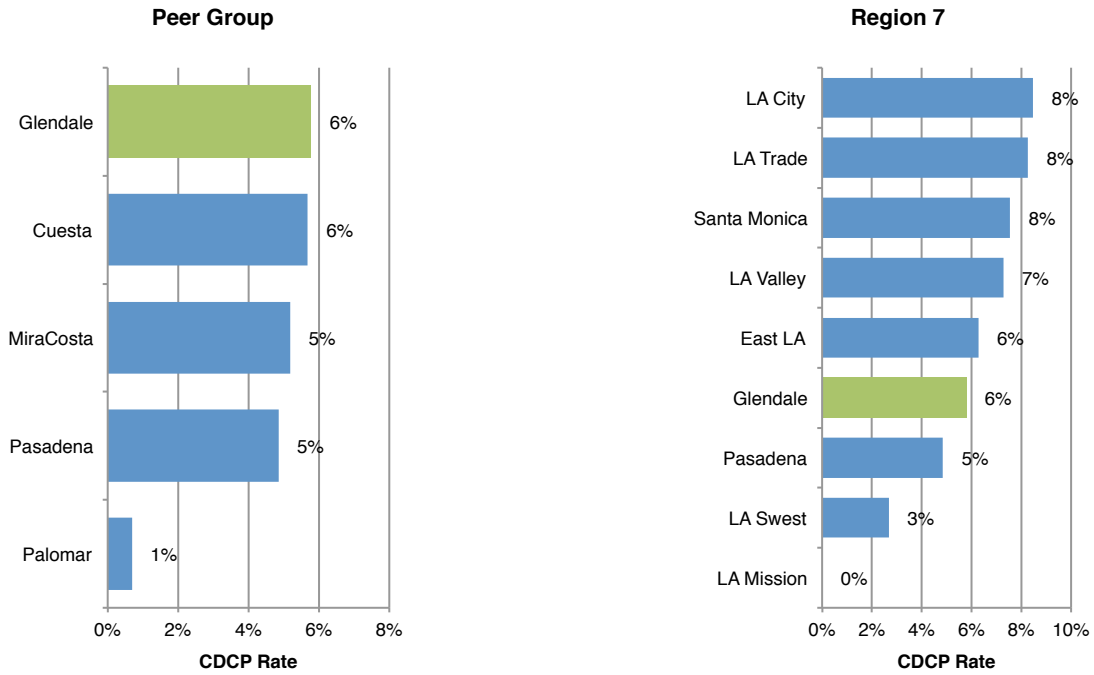
**CDCP Rate, 2007-2008 Entering Cohort**



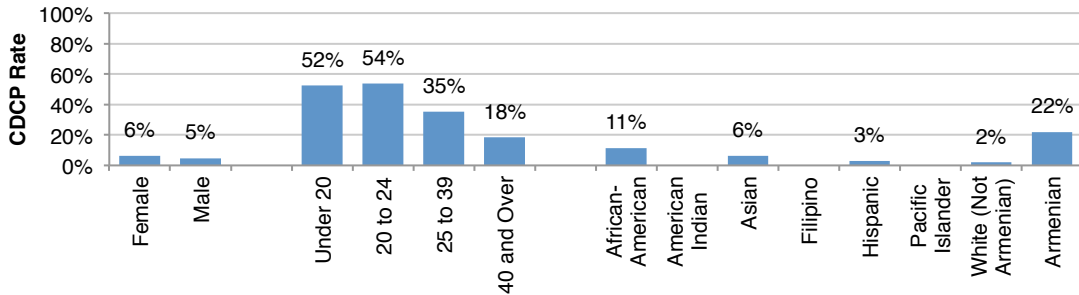
**CDCP Rate, GCC Trends**



### CDCP Rate, 2007-2008 Entering Cohort



### CDCP Rate by Student Group, 2007-2008 Entering Cohort



Note: Rates for American Indian/Alaska Natives, Filipinos, and Pacific Islanders are not shown because they are based on student groups of less than 10 students.