



Cluster: Health Science

Guided Career Pathways Health Care

**Program of Study: Career Ladder Nursing**

Associate of Arts/ Science Degree	M	E	T	I	P	N	E	E	D
<b>2. AMERICAN INSTITUTIONS/STATE &amp; LOCAL GOVERNMENT : (3 units)</b>									
Political Science 101**, 105 and 106; Social Science 132. <small>(**Students who completed POL S 101 before Spring 2014 must also complete POL S 106).</small>									
<b>3. U.S. HISTORY: (3units)</b>									
Economics 111, History 116; History 110, 111(CD), 117, 118; Social Science 131									
<b>4. MATHEMATICS</b>									
Mathematics 101, 120, 131 or 220AB (2 units)									
<b>5. HEALTH (3 units)</b>									
Health 104, 106; Psychology 111(CD)* or equivalent will satisfy this requirement.									
<b>6. PHYSICAL EDUCATION (2 units)</b>									
physical education activity classes and/or dance activity classes									
<b>7. FIRST AID (1 units)</b>									
Health 101, 102; Emergency Medical Technology 140									
<b>8. CULTURAL DIVERSITY (3 units)</b>									
Courses that satisfy this requirement have been marked by (CD) and appear throughout the graduation requirements. The requirement may be satisfied by completing any one of the graduation requirements with a course marked (CD) or by completing Child Development 156.									
<b>9. General Education: 18 units; 1 course from each areas</b>									
<b>A. Natural Science (3 units)</b>									
<b>B. Social Sciences (3 units)</b>									
<b>C. Humanities:</b>									
<b>1. Interdisciplinary Humanities (3 units)</b>									
<b>2. Arts, Foreign Language, Literature, &amp; Philosophy (3 units)</b>									
<b>D. Lang &amp; Reality:</b>									
<b>1.English Composition (3 units)</b>									
<b>2.Communication &amp; Analytical Thinking (3 units)</b>									
<b>TOTAL UNITS 35-37</b>									

\*\*\* COURSES WITH AN asterisk may be completed in one area only.  
 \*\*\*Students who complete POL S 101 prior to spring 2014 must also complete POL S 106

**Online Resources**



[www.salarysurfer.cccco.edu](http://www.salarysurfer.cccco.edu)



[www.CaCareerZone.org](http://www.CaCareerZone.org)



1500 North Verdugo Road, Glendale, CA 91208

**Academic Counseling** (818) 240-1000 Ext. 5918 **Career Center** (818) 240-1000 Ext. 5407 or 5408 **SEE A COUNSELOR TO PREPARE A STUDENT EDUCATIONAL PLAN**

PREREQUISITE COURSES	CERTIFICATE (Requirements)	U	N	I	T	S	M	E	T	I	P	N	E	E	D	Transfer Credit
CHEM 101, 110, or 120	BIOL 112*: Microbiology	5														CSU, UC, USC
	BIOL 120*: Human Anatomy	5														CSU, UC, USC
BIOL 120 and CHEM 101, 110, or 120	BIOL 121*:Introduction to Physiology	4														CSU, UC, USC
Test scores or satisfactory completion of ENGL 120, 199 or ESL 151 or equivalent	ENGL 101:Freshman English	3														CSU, UC, USC
Eligibility for ENGL 101	PSYCH 101:General Psychology	3														CSU, UC, USC
Tests scores or satisfactory completion of MATH 141, 146, 246B, or 2 units of MATH 246	Eligibility for MATH 101															
<b>Required Courses for the Program</b>																
	SPCH 101:Public Speaking	3														CSU
Completion of the 2nd semester of the RN program, or previous completion of equivalent coursework; or selection for the CL LVN-RN program. Corequisite: Enrollment in the 3rd semester of the RN program. (optional)	NS 203** : Nursing Seminar III	1.5														CSU
Completion of the 3rd semester of the RN program, or previous completion of equivalent coursework. Corequisite: Enrollment in the 4th semester of the RN program. (optional)	NS 204** : Nursing Seminar IV	1														CSU
NS 212 (Generic Nursing Program) or NS 217 and NS 218 but NS 203 is optional but highly recommended	NS 213: Medical-Surgical Nursing III	4.5														CSU
NS 213 but NS 204 is optional but highly recommended	NS 214: Medical-Surgical Nursing IV	6														CSU
NS 213 and Satisfactory completion of the 3 <sup>rd</sup> semester of the RN program. Corequisite: NS 214	NS 215: Nursing Practice in Contemporary Settings	2.5														CSU
NS 212 or equivalent (Generic Nursing Program), or NS 213 and NS 217 (Career Ladder LVN-RN Program).	NS 216*** :Intermediate Clinical Experience	2														CSU
Selection for the RN program (CL)	NS 217: Advanced Placement Nursing	1														CSU
Selection for the RN program (CL)	NS 218: Nursing Pharmacology Review	1.5														
NS 211, PSY 101 (Generic Nursing Program), or NS 217, NS 218, and PSY 101 (Career Ladder LVN-RN Nursing Program) but NS 202 is optional but highly recommended	NS 222: Psychiatric Nursing	3.5														CSU
<b>TOTAL UNITS REQUIRED</b>																<b>46.6</b>

\* BIO 112, 120, 121 must be completed within the last 7 years.  
 \*\* This course is optional but highly recommended.  
 \*\*\* This course is designed for students who have completed the first year of the generic RN program.  
**See the nursing counselor for detailed program requirements.**

Student / Faculty Notes:

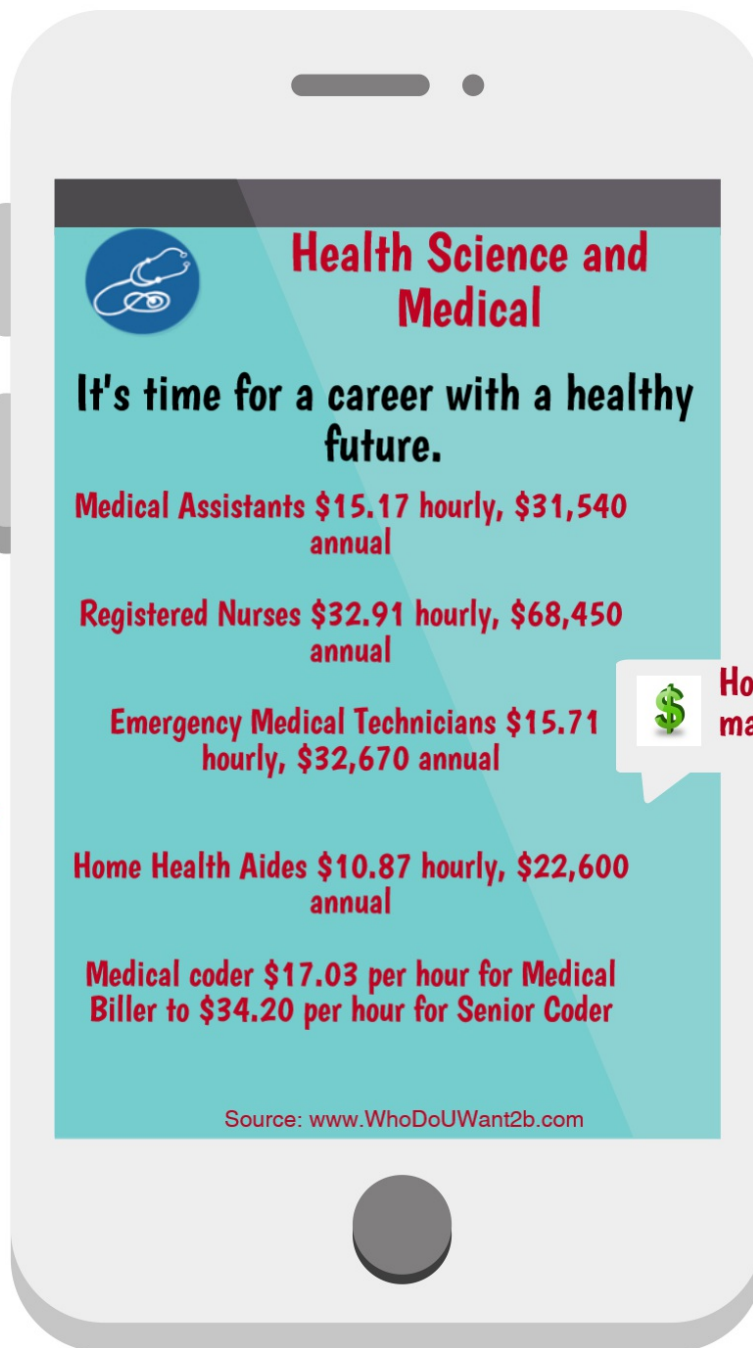


# Health Science and Medical

The demand for health care professionals is strong...and getting stronger every day. If you're the kind of person who enjoys caring for other people, now is the perfect time to check out the Health Science and Medical Technology career pathway.

This pathway can lead you to many different specialties, including Nursing, Biotechnology Research and Development, Diagnostic Services, Health Informatics (using cutting-edge technology to store and retrieve medical data), Support Services, and Physical Therapy.

No matter which branch you take, you'll get the academic and technical education you need for a wide range of medical careers, from entry-level to managerial. You'll also get the satisfaction that comes from helping other people, and you'll be a part of one of the most in-demand fields around. Health Science and Medical Technology is a great pathway to choose!



 **How much can you make?** ● ● ●

## Technical Level Careers

(with AA or AS degree or certificate)

- Account Specialist
- Cost Estimator
- Tax Preparer
- Associate Accountant
- Administrative Assistant
- Office Manager
- Loan Specialist
- Credit Analyst
- Claims Examiner
- Treasurer
- Insurance Claims Agent

## Professional Level Careers

(with BS or BA degree)

- Surgeons
- Speech-Language Pathologists
- Registered Nurses (4 yr)
- Pharmacists
- Physicians
- Orthodontists
- Nurse Practitioner
- Anesthesiologists
- Dietitians and Nutritionists
- Health Services Administrator
- Medical/Public Health Social Workers

O\*NET ONLINE

[www.Online.OneToOnline.org](http://www.Online.OneToOnline.org)

Has detailed descriptions of the world of work for use by job seekers, students, researchers, and more! Click on "find occupation".