

# Student Success Scorecard 2017

Edward Karpp

Dean of Research, Planning & Grants

Board of Trustees Retreat – August 7, 2017

# Scorecard Metrics for 2017

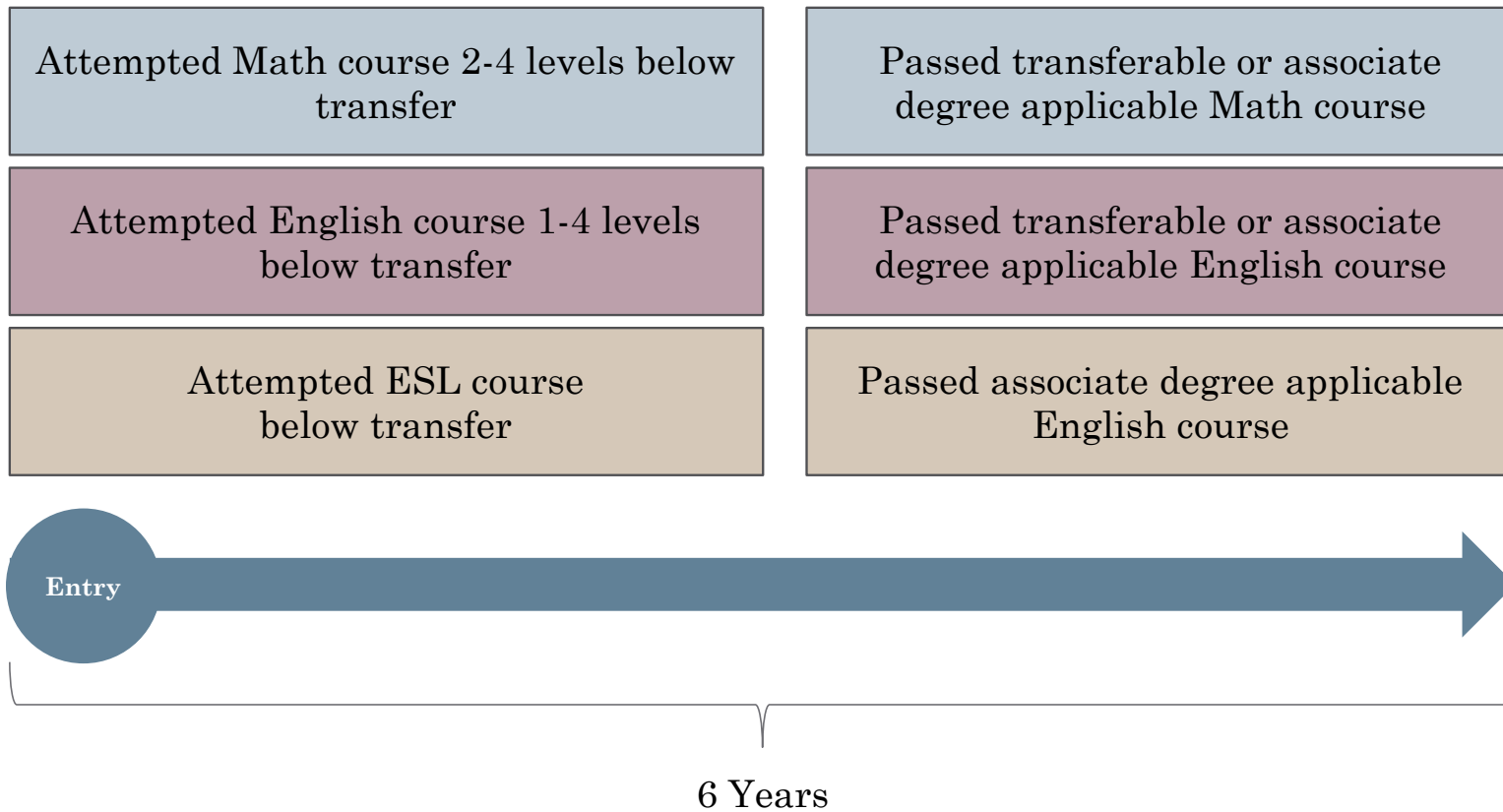
- **Basic Skills Metrics**
  - Remedial/ESL
  - Transfer Level Achievement (new)
- **Completion Metrics**
  - Persistence
  - 30 Units
  - Degree/Transfer Completion
- **CTE (Career Technical Education) Metrics**
  - CTE Rate
  - Skills Builders (new)
- **CDCP (Career Development and College Preparation) Rate**

# Comparisons

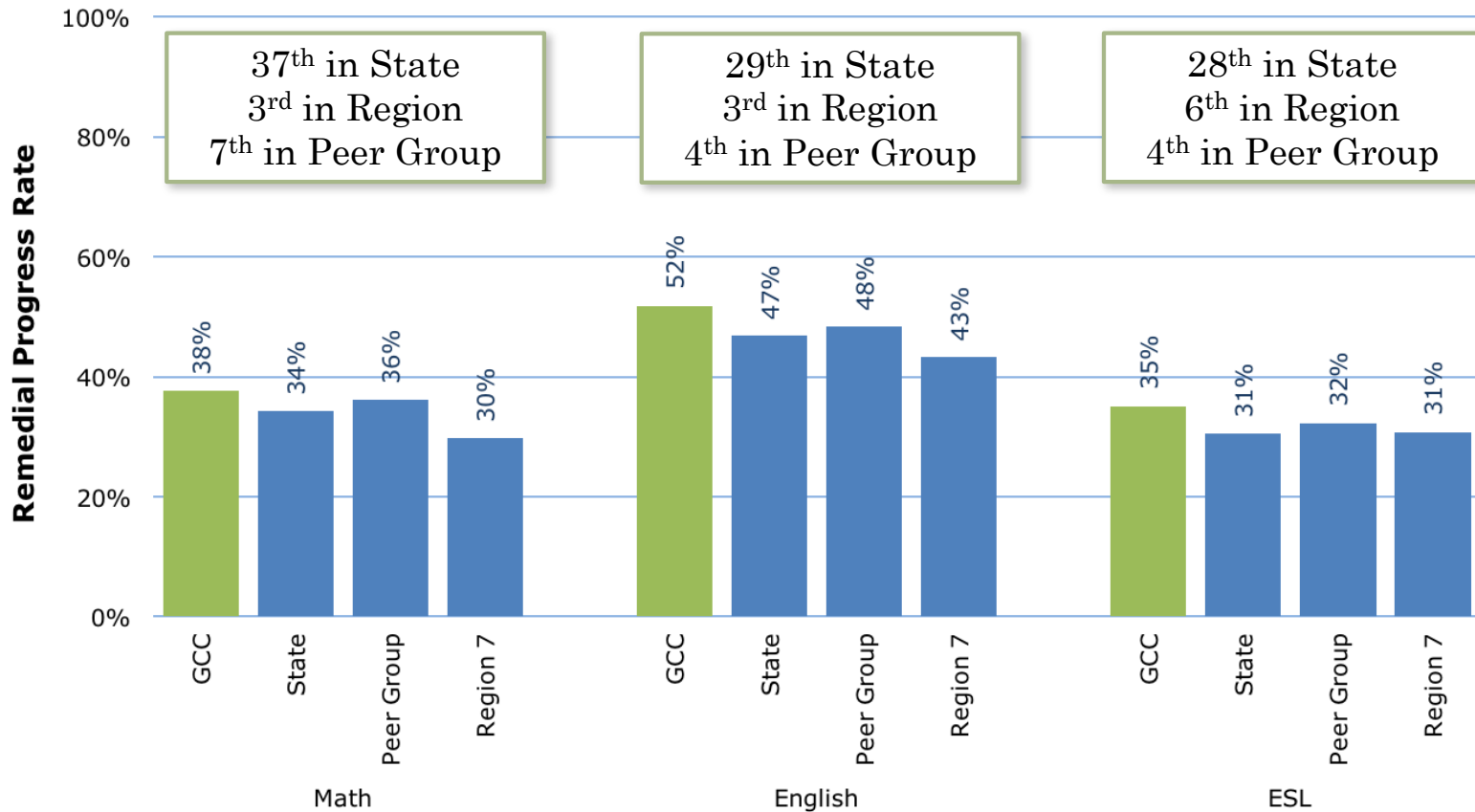
- **Statewide Average**
- **Peer Group Average (New Peer Group for 2017)**
  - American River, Cabrillo, College of the Canyons, Coastline, Glendale, Lake Tahoe, Monterey, Napa, San Diego City, San Jose City, Santa Rosa, Santiago Canyon, College of the Siskiyous (13 colleges)
- **Region 7 Average**
  - Compton, East LA, El Camino, Glendale, LA City, LA Harbor, LA Mission, LA Pierce, LA Southwest, LA Trade Tech, LA Valley, Pasadena, Santa Monica, West LA (14 colleges)

# Remedial / ESL Metrics: Definitions

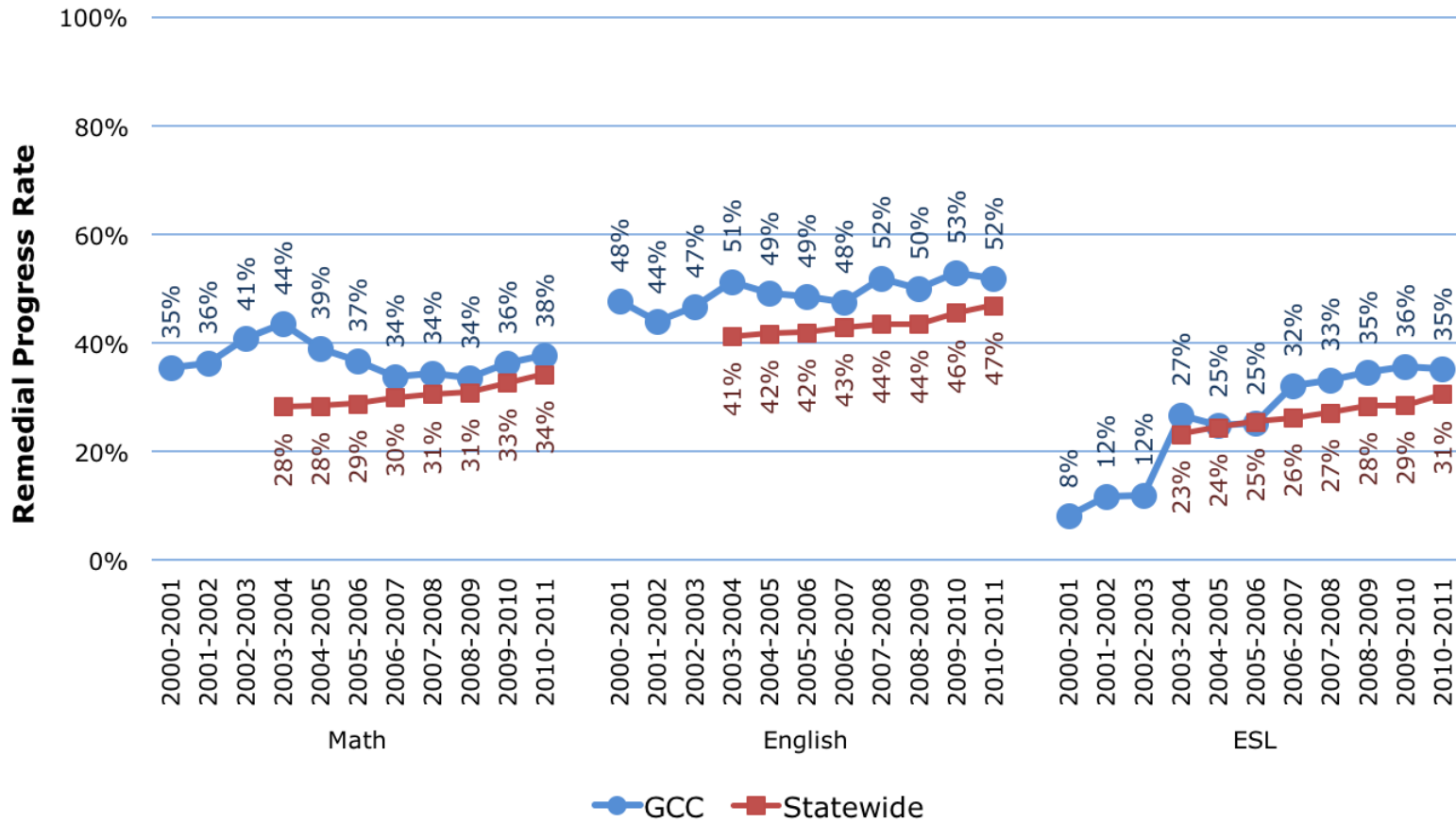
Percentage of basic skills Math/English/ESL students who pass college-level courses



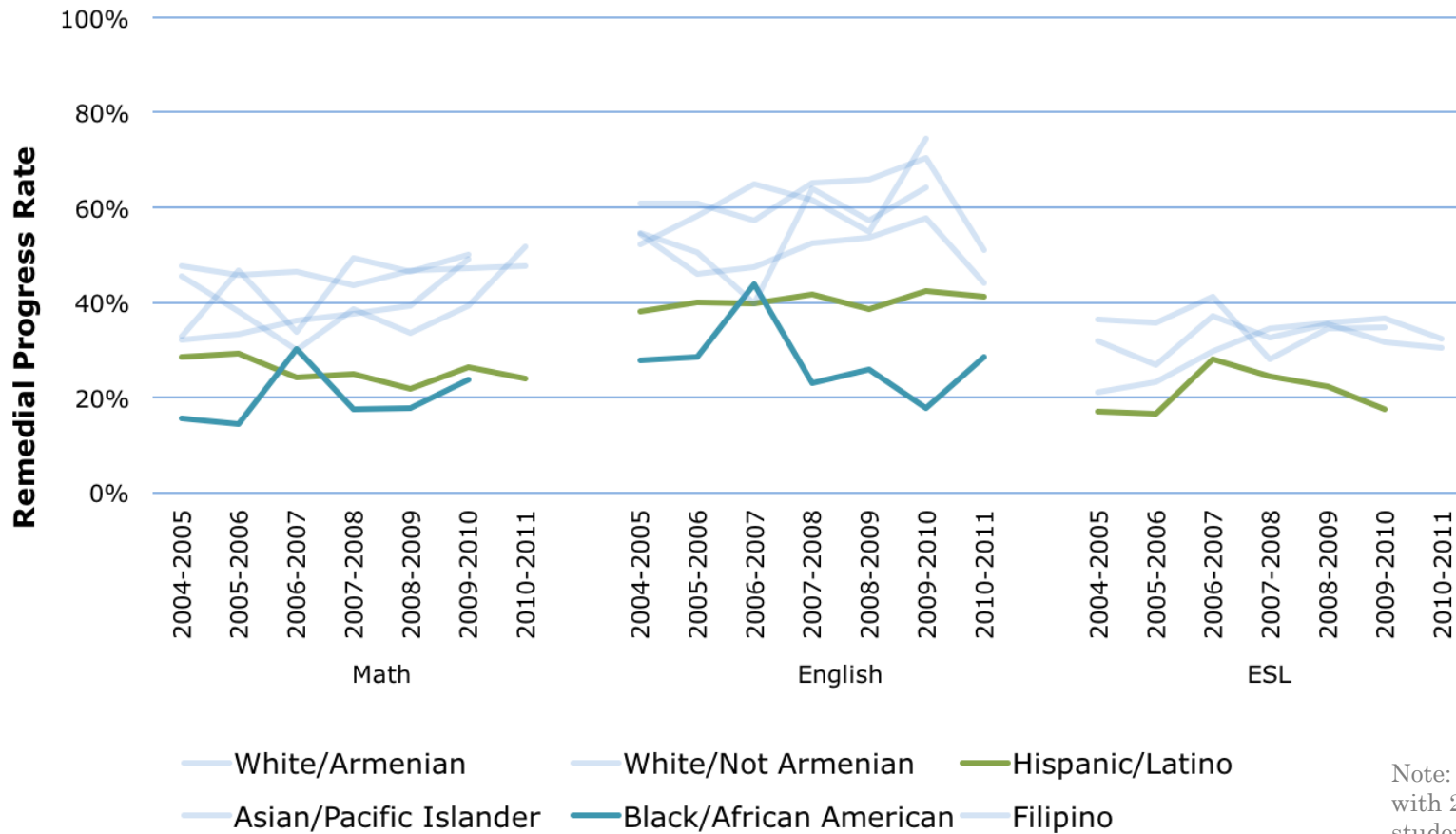
# Remedial / ESL Metrics: 2010-11 Cohort



# Remedial / ESL Metrics: Trends



# Remedial / ESL Metrics: Gaps

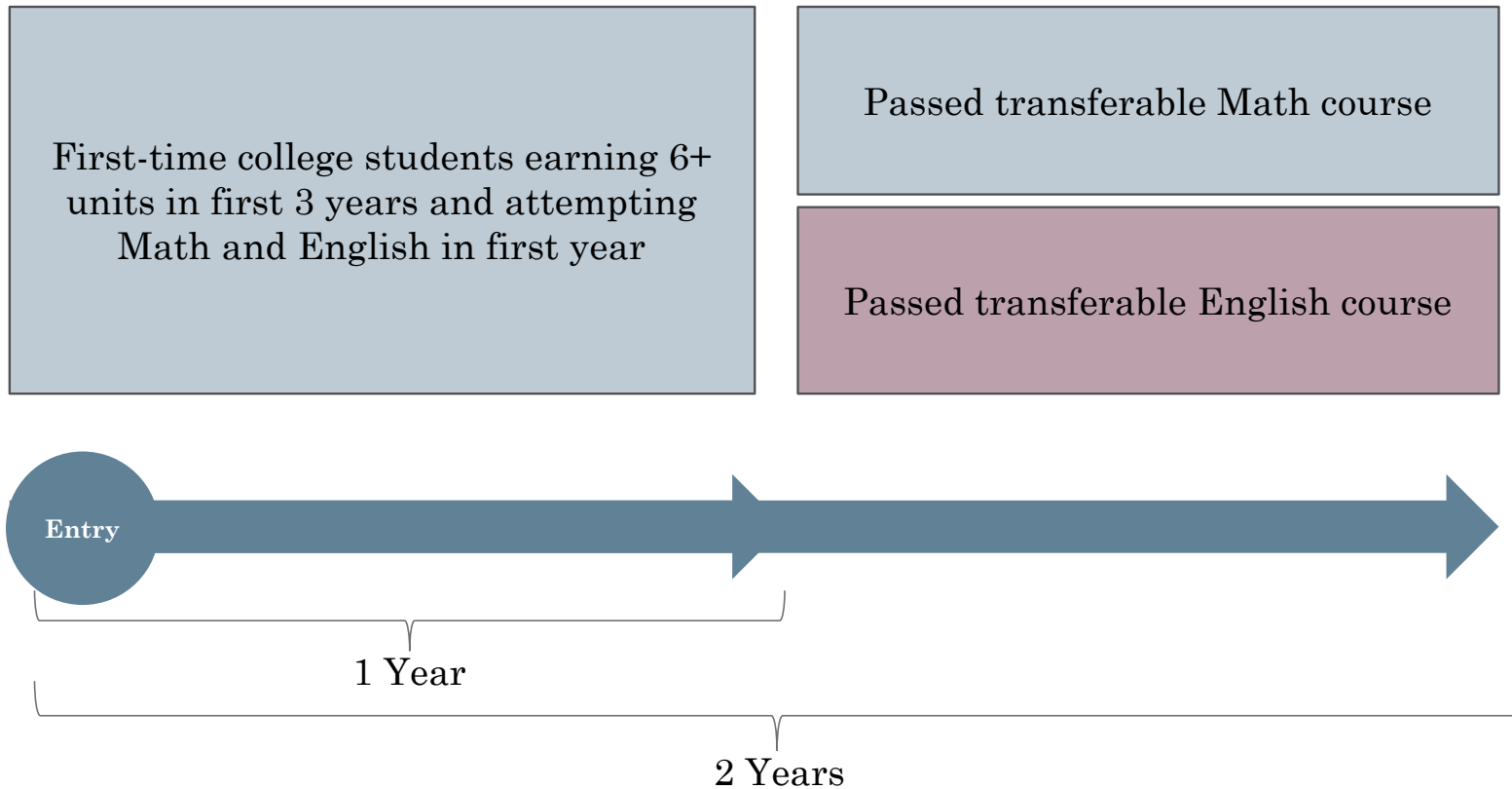


Note: Only data cells with 20 or more students are shown

**NEW!**

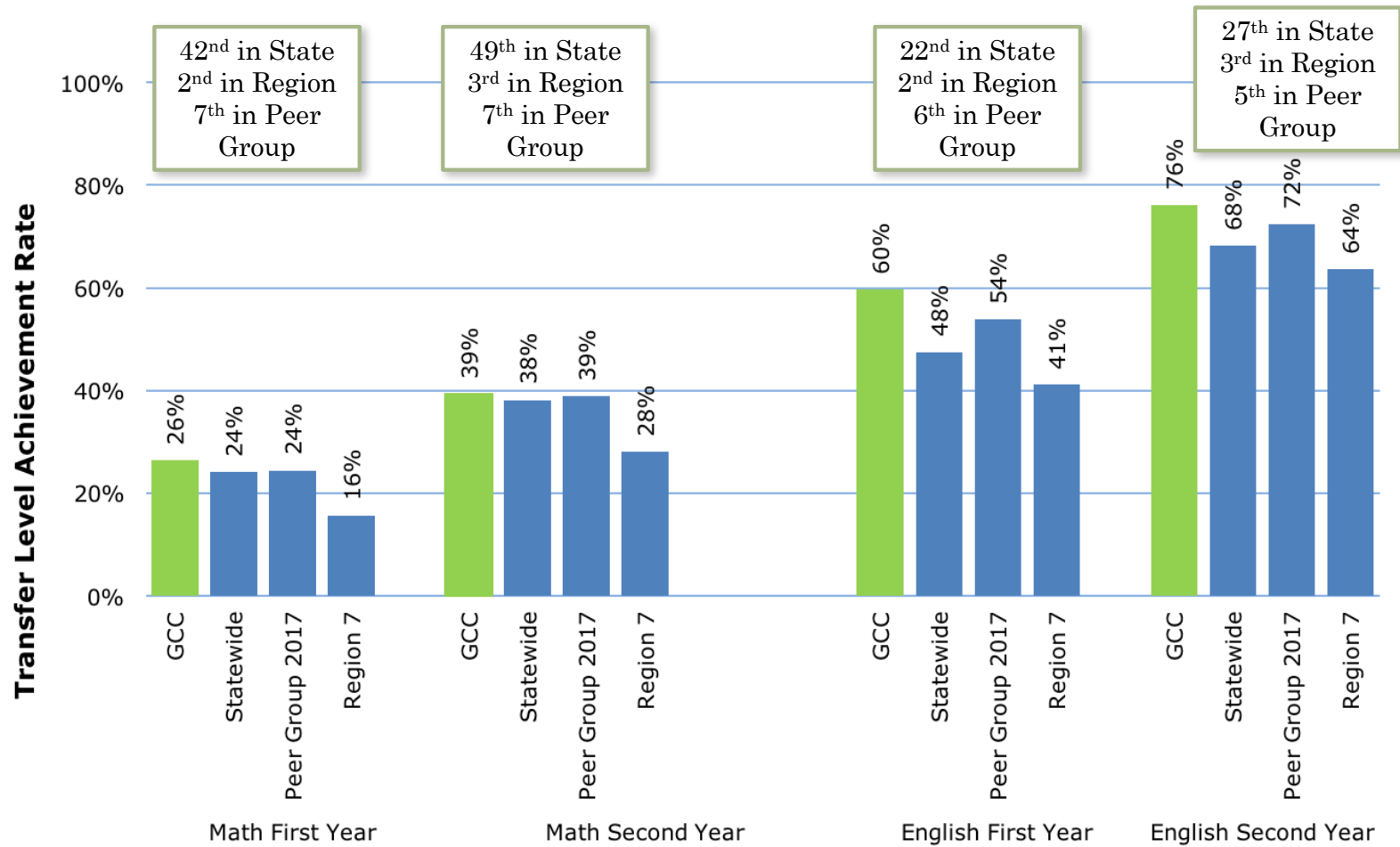
# Transfer Level Achievement: Definitions

Percentage of new students who pass transferable Math and English courses

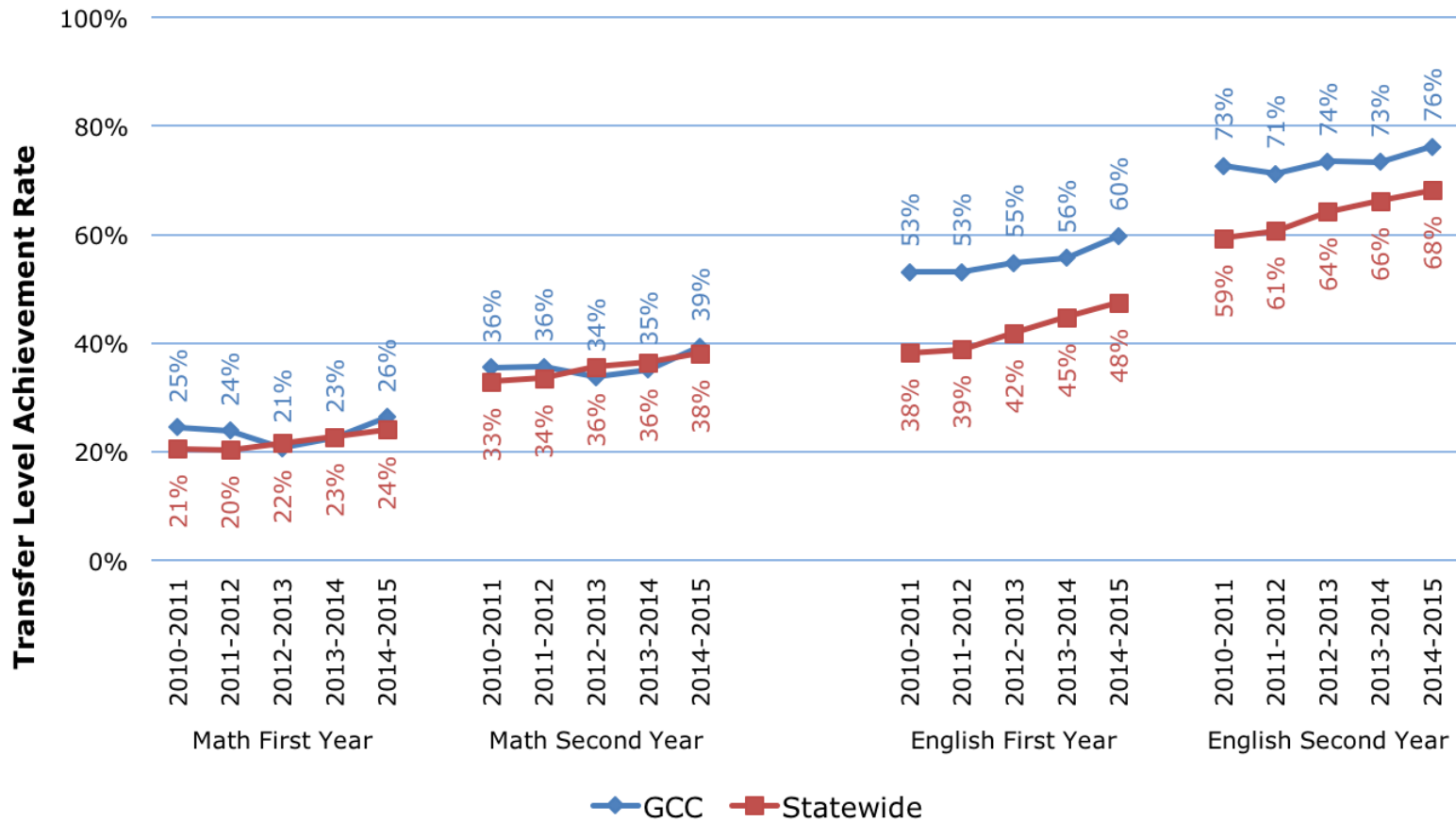




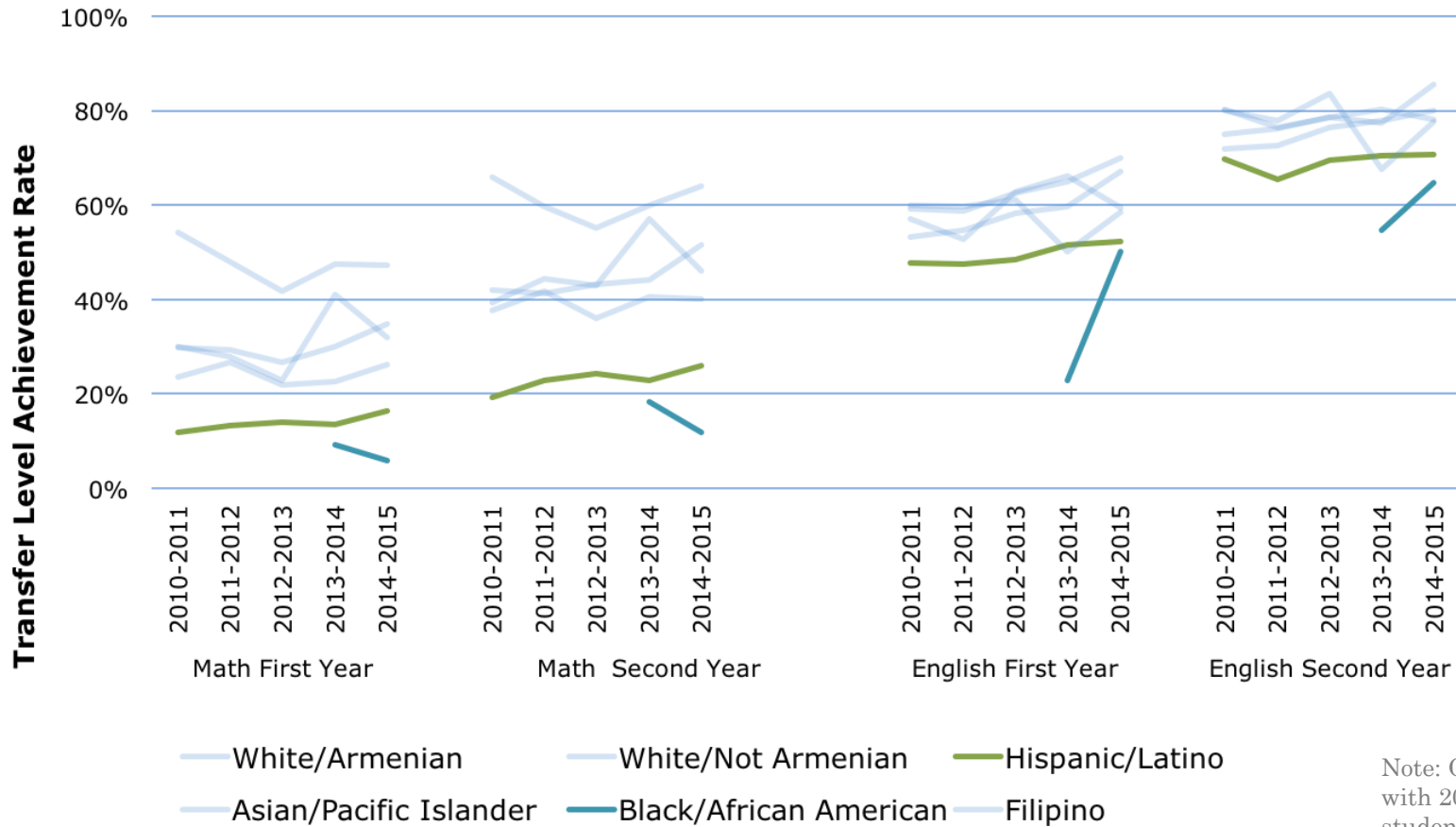
# Transfer Level Achievement: 2014-15 Cohort



# Transfer Level Achievement: Trends



# Transfer Level Achievement: Gaps



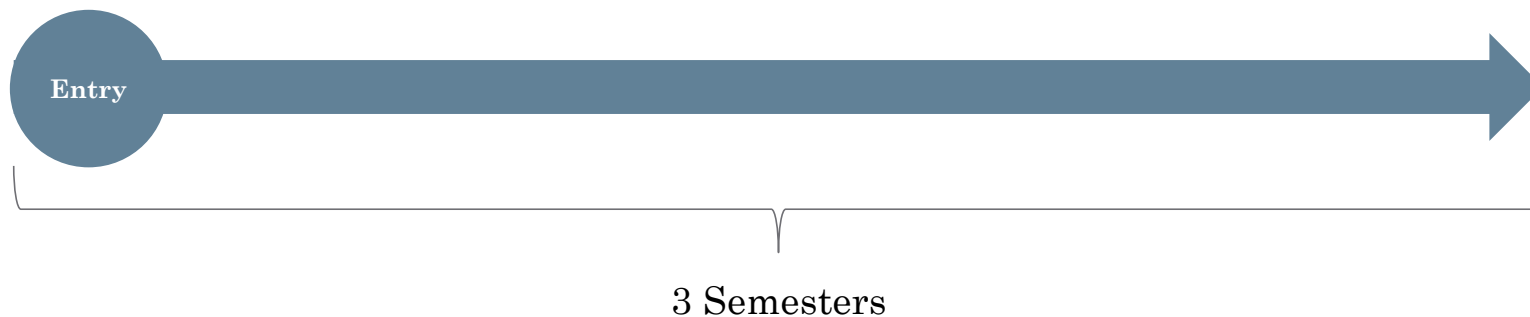
# Persistence Rate: Definition

Percentage of new students enrolled in three consecutive semesters

First-time college students earning 6+ units in first 3 years and attempting Math or English in first 3 years

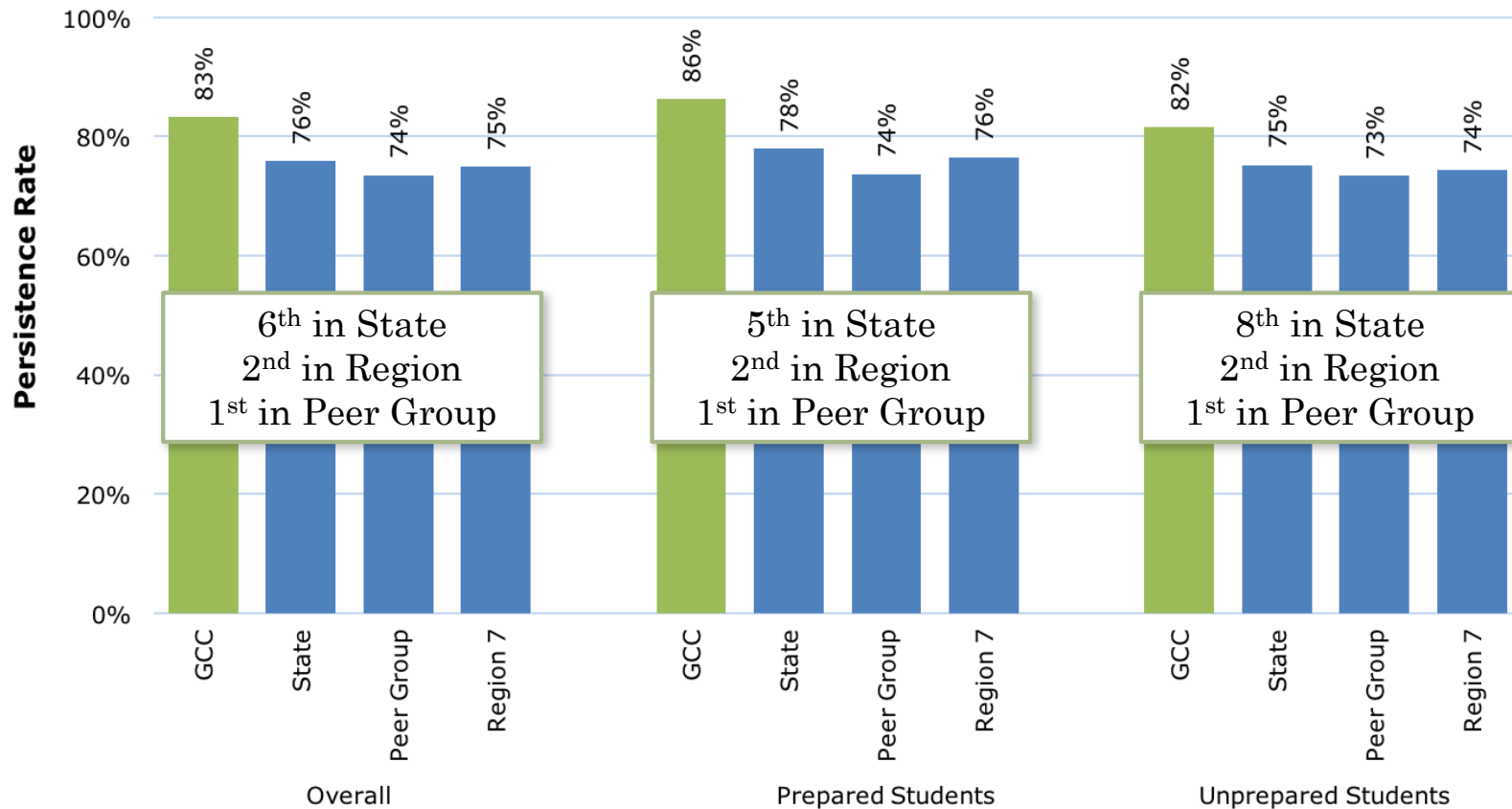
- Overall
- Prepared Students\*
- Unprepared Students\*

Enrolled in credit course during three consecutive primary terms (Fall/Spring)

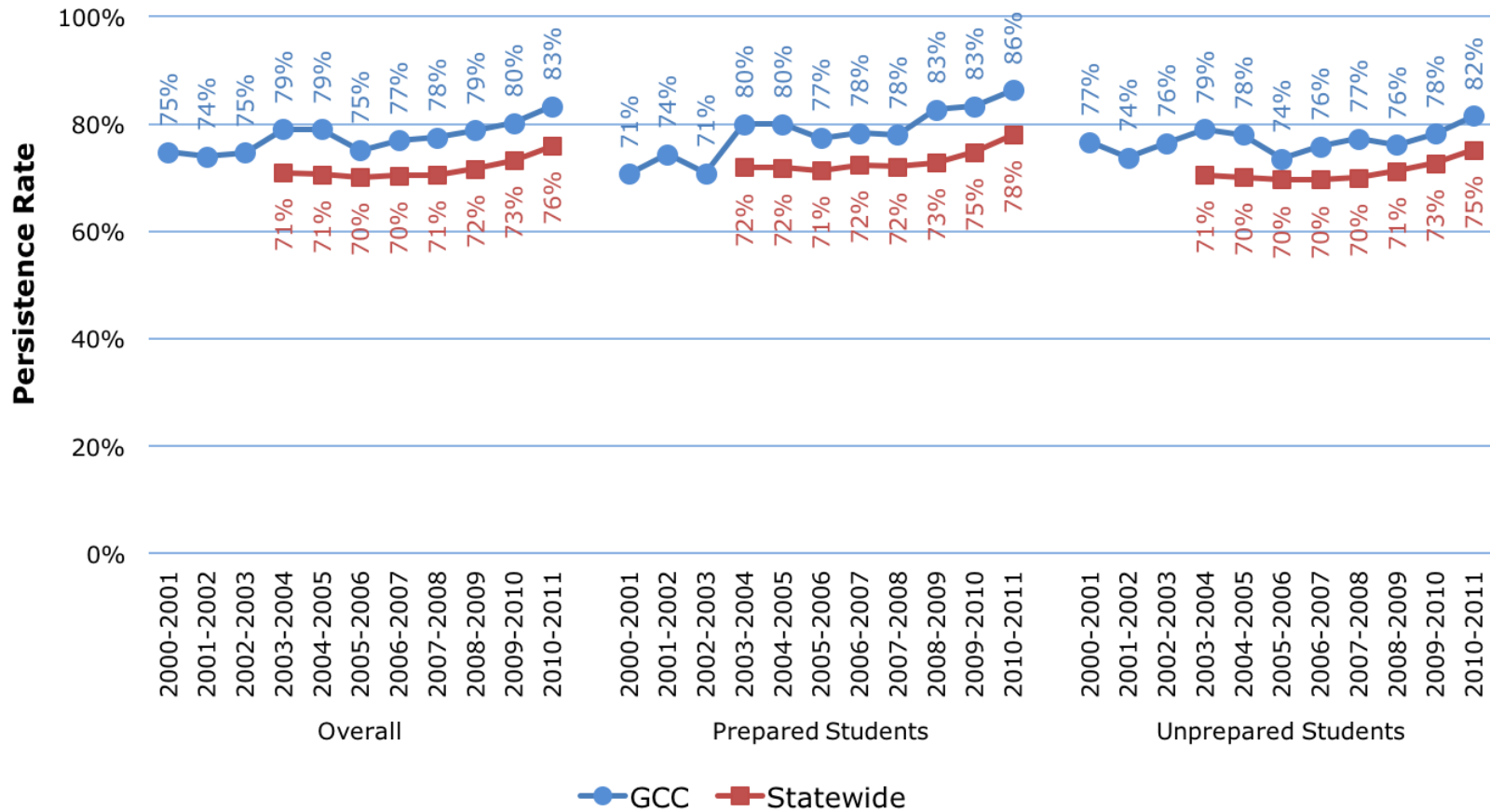


\* Prepared students' first English course was transferable and first Math course was transferable or associate degree applicable.

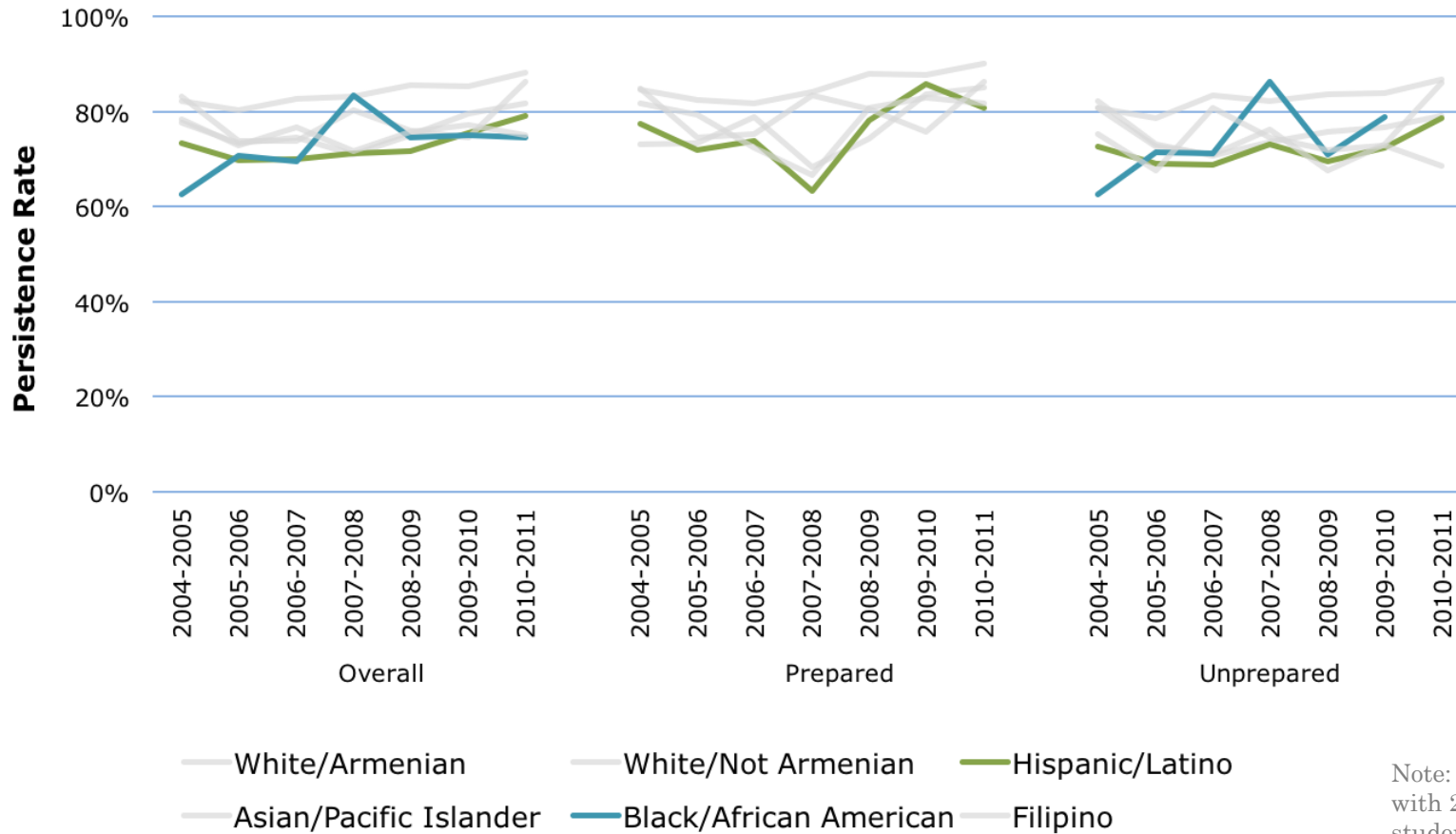
# Persistence Rate: 2010-11 Cohort



# Persistence Rate: Trends



# Persistence Rate: Gaps



Note: Only data cells with 20 or more students are shown

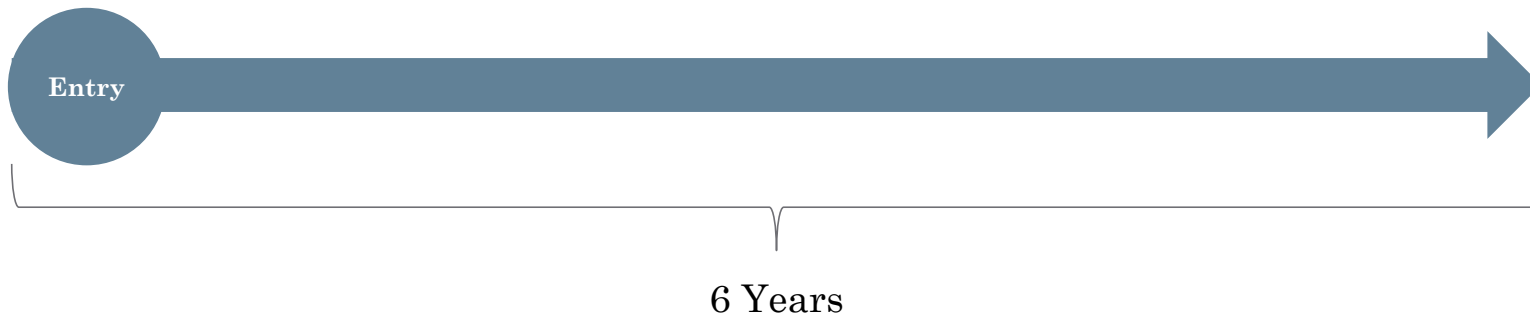
# 30 Unit Rate: Definition

Percentage of new students who earn 30 or more units

First-time college students earning 6+ units in first 3 years and attempting Math or English in first 3 years

- Overall
- Prepared Students\*
- Unprepared Students\*

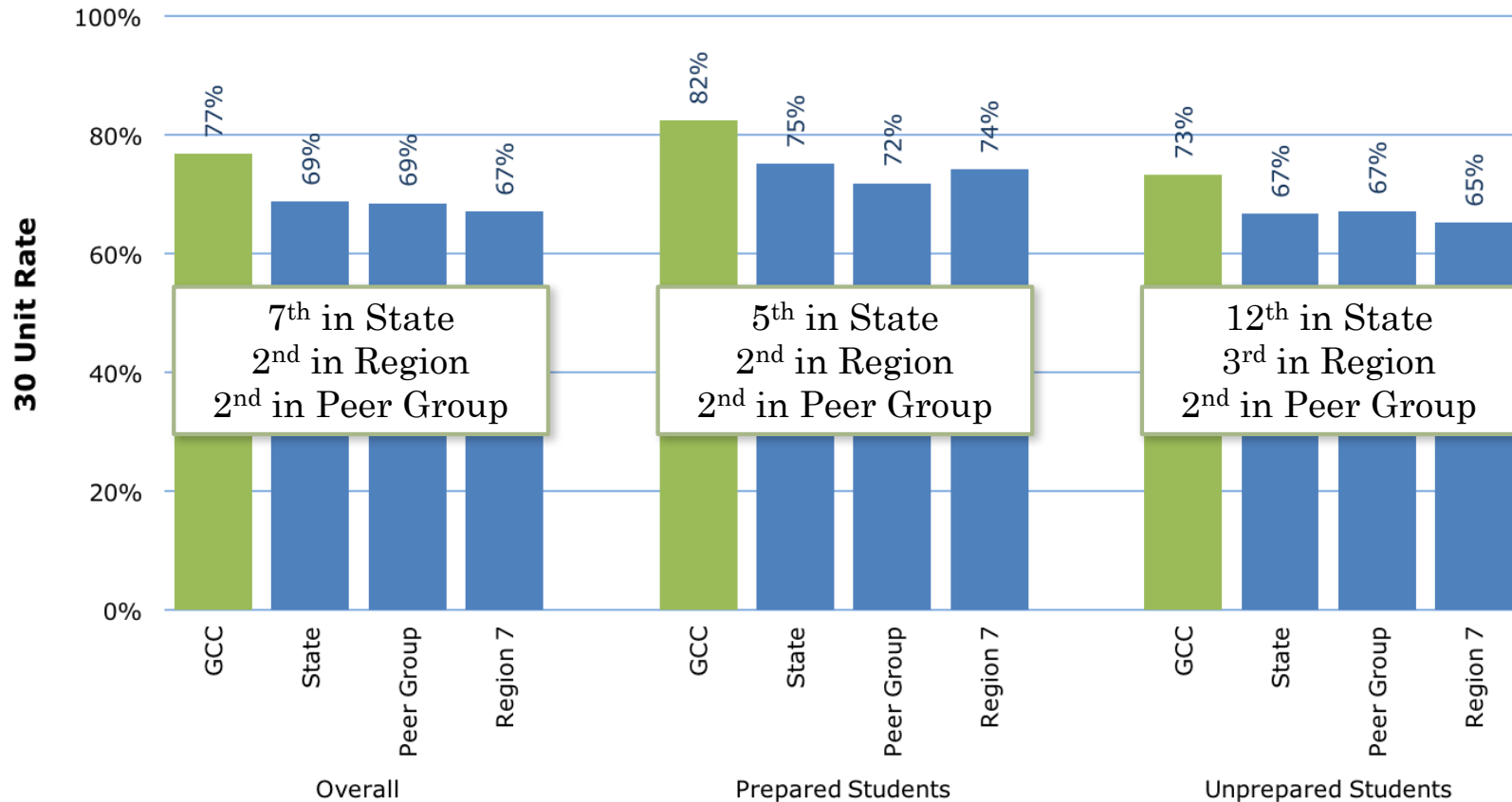
Earned 30+ units in California community college system



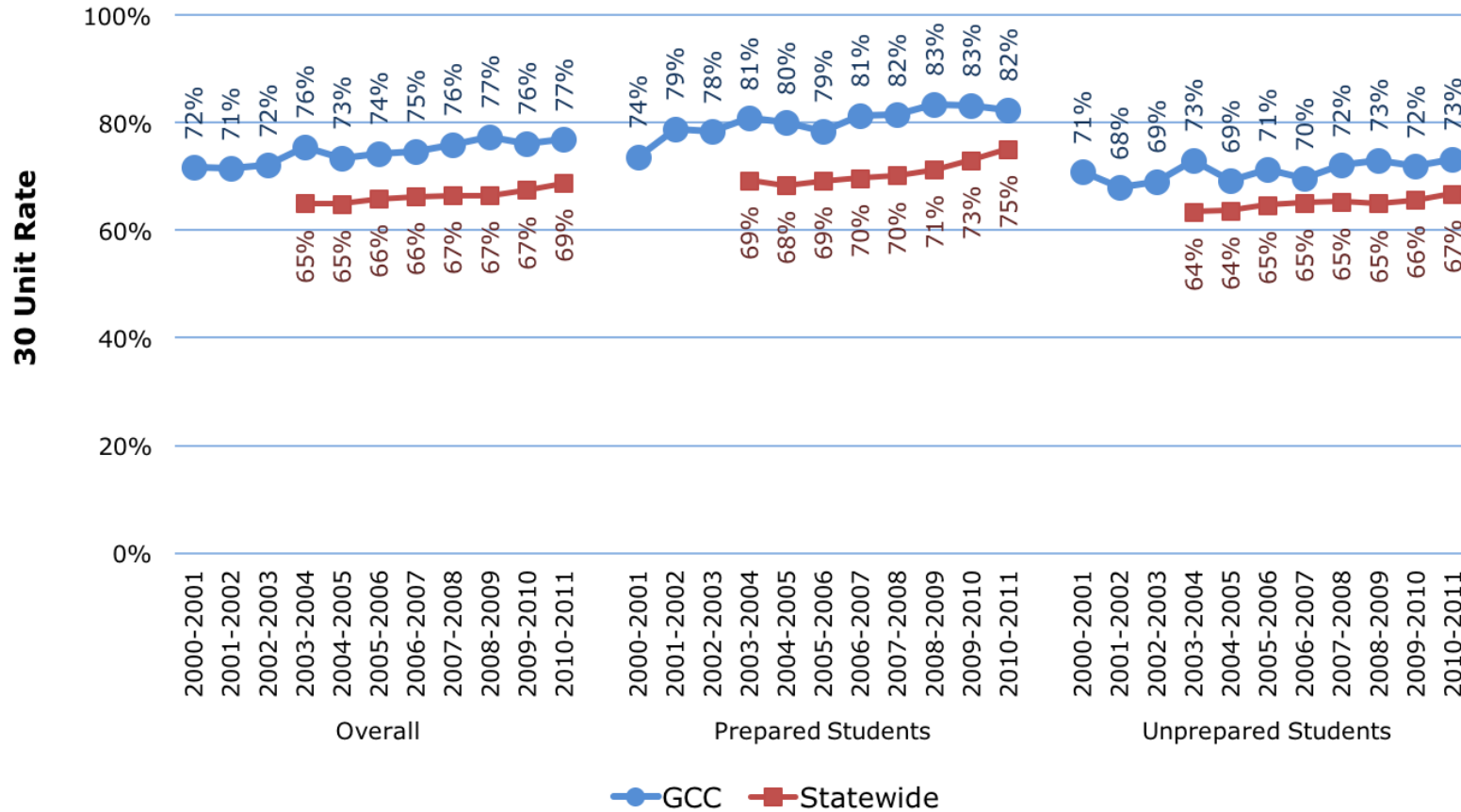
\* Prepared students' first English course was transferable and first Math course was transferable or associate degree applicable.



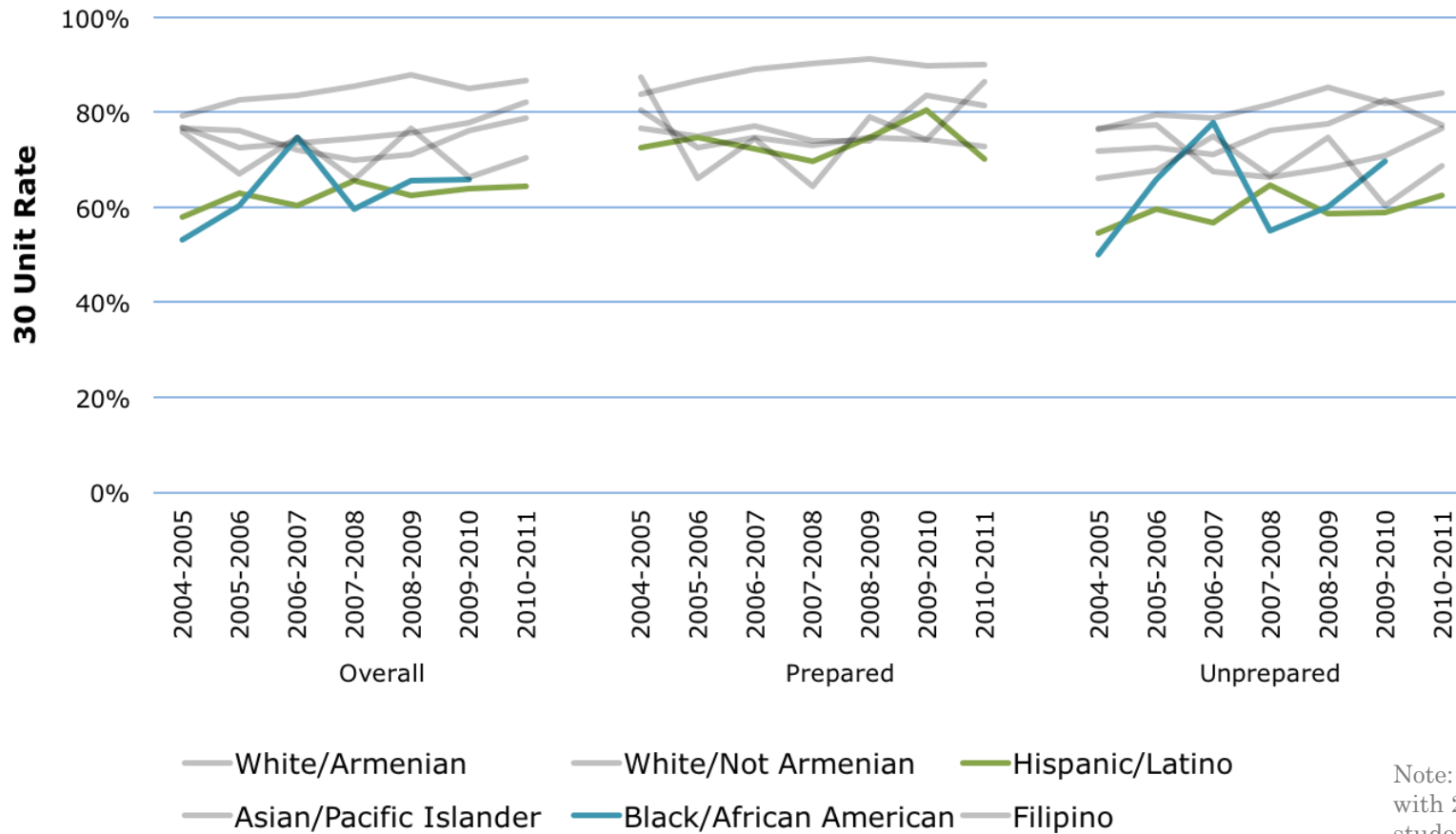
# 30 Unit Rate: 2010-11 Cohort



# 30 Unit Rate: Trends



# 30 Unit Rate: Gaps



Note: Only data cells with 20 or more students are shown

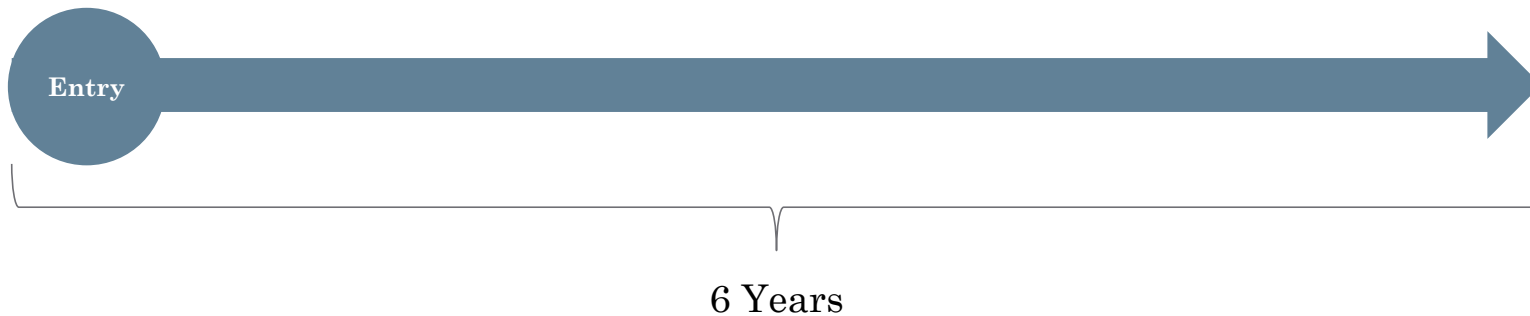
# Completion Rate: Definition

Percentage of new students who complete a degree or certificate, or transfer

First-time college students earning 6+ units in first 3 years and attempting Math or English in first 3 years

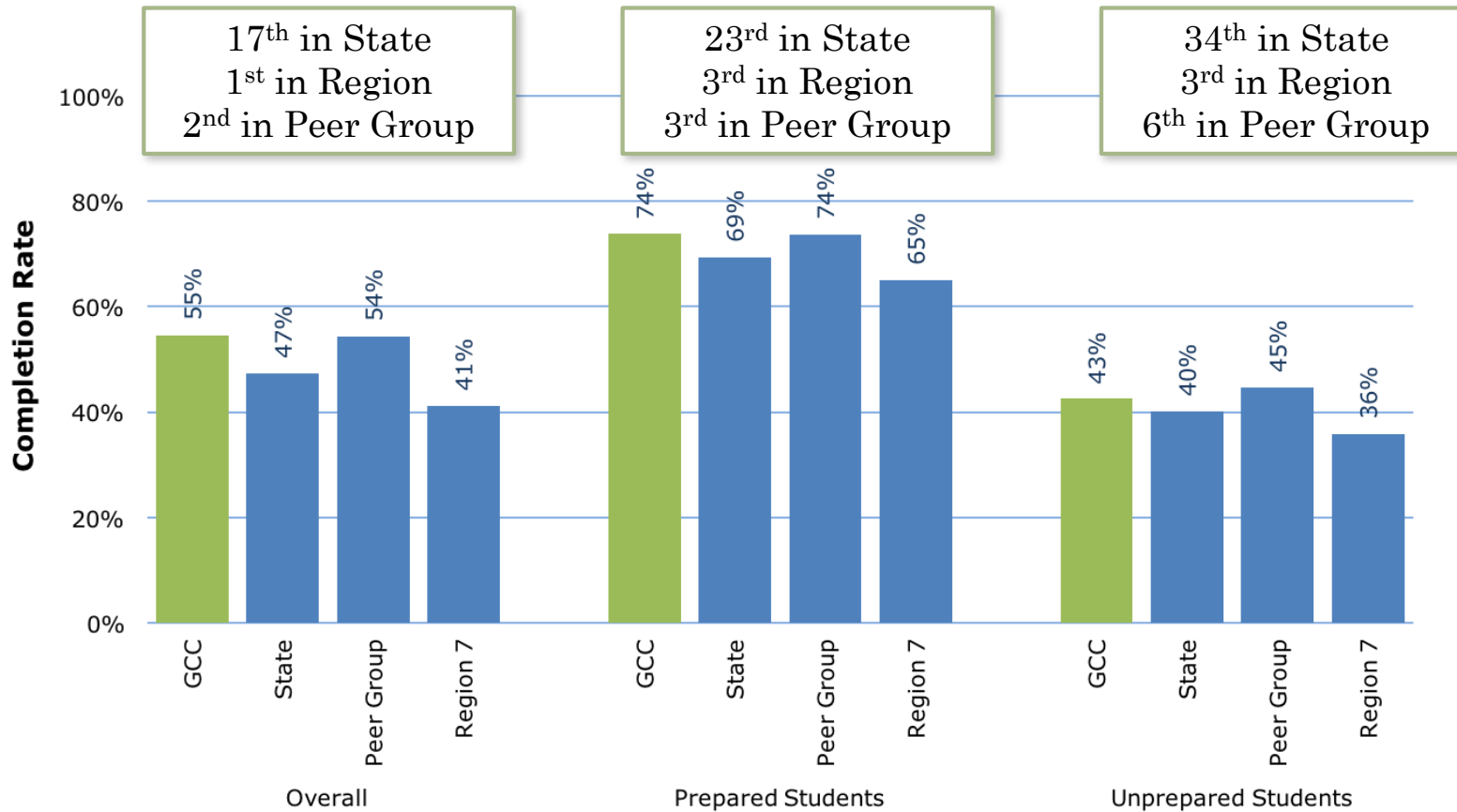
- Overall
- Prepared Students\*
- Unprepared Students\*

Completed degree or certificate, transferred, or became transfer prepared (60+ transferable units with GPA of 2.0+)

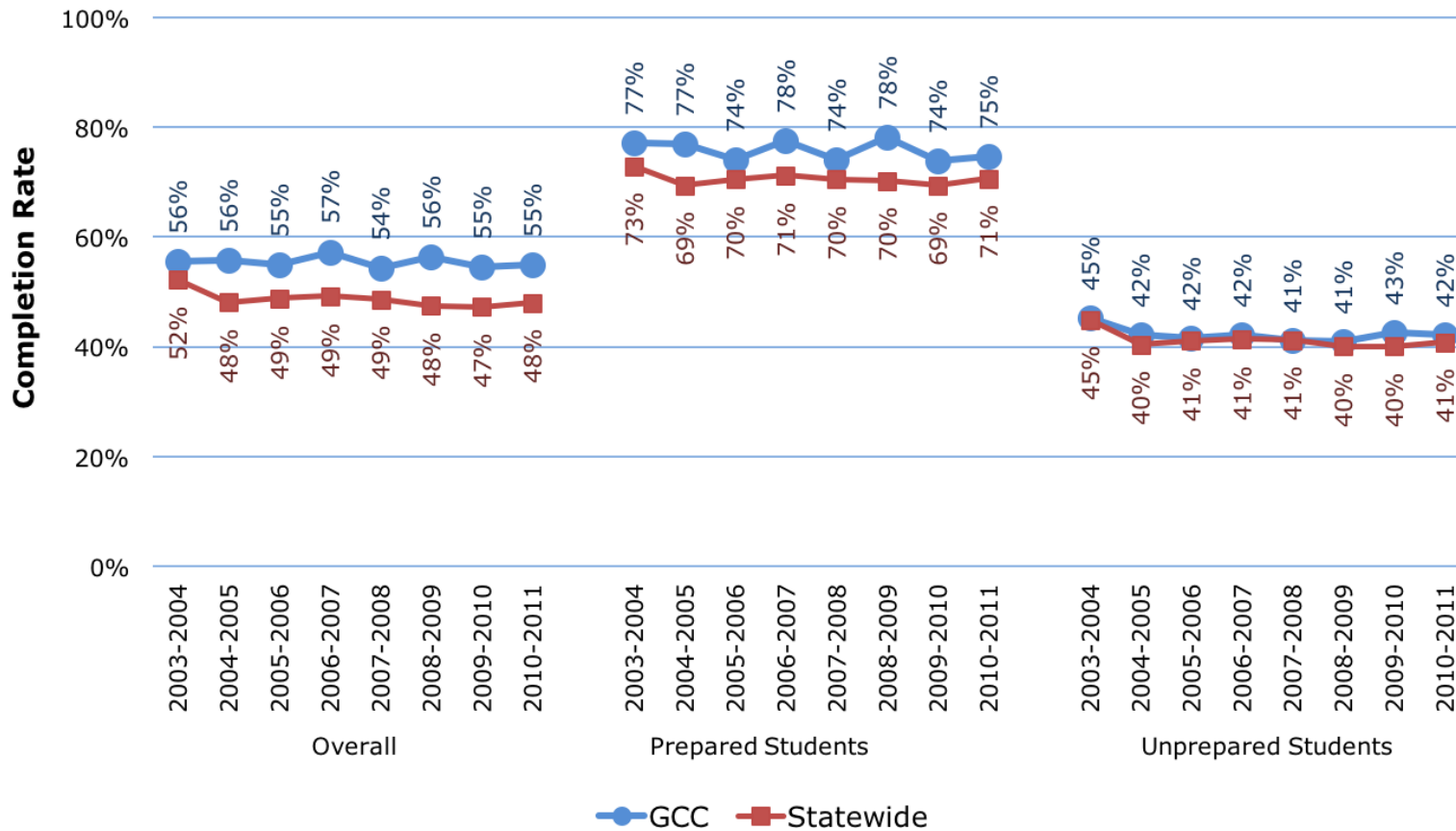


\* Prepared students' first English course was transferable and first Math course was transferable or associate degree applicable.

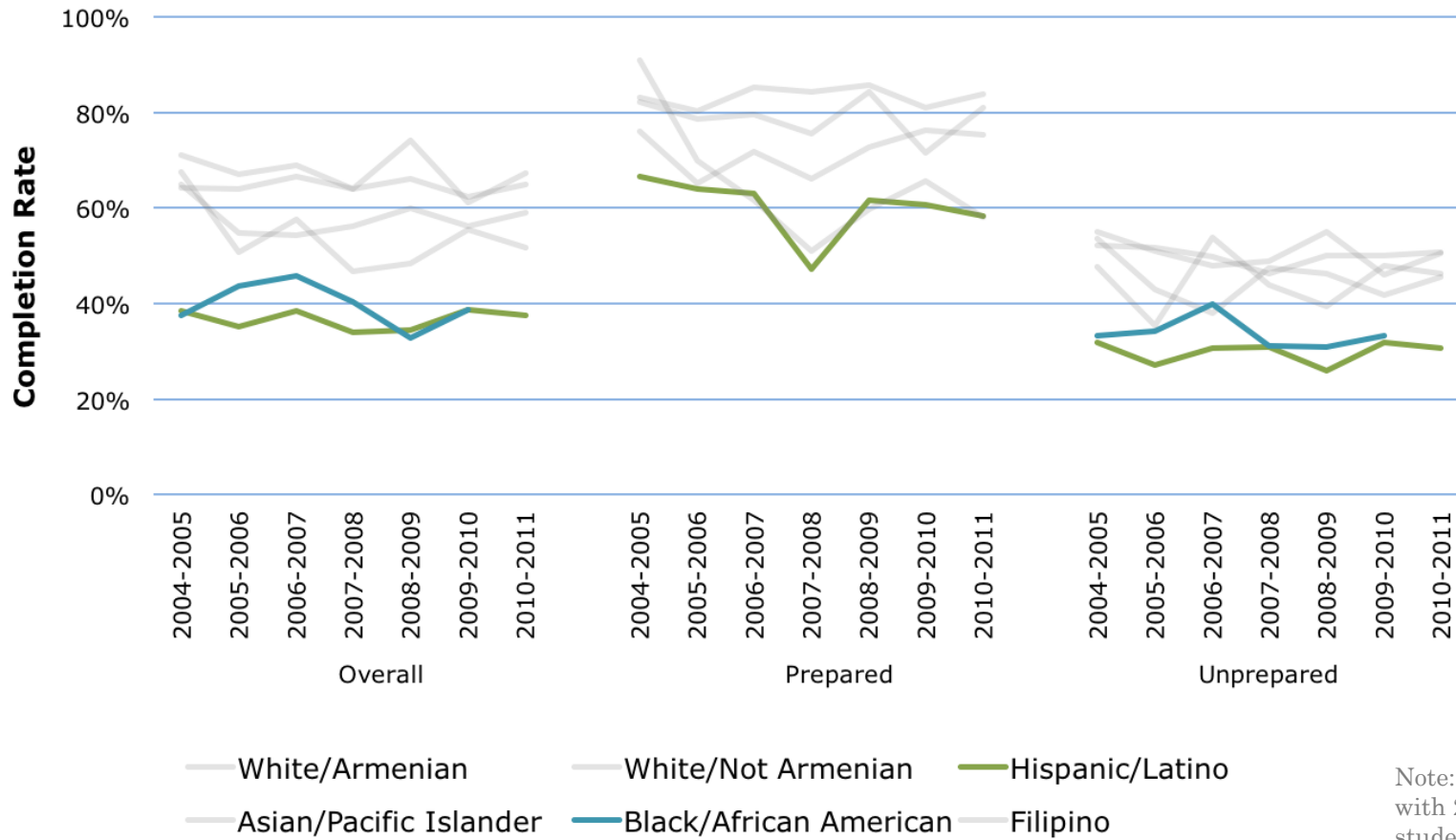
# Completion Rate: 2010-11 Cohort



# Completion Rate: Trends



# Completion Rate: Gaps



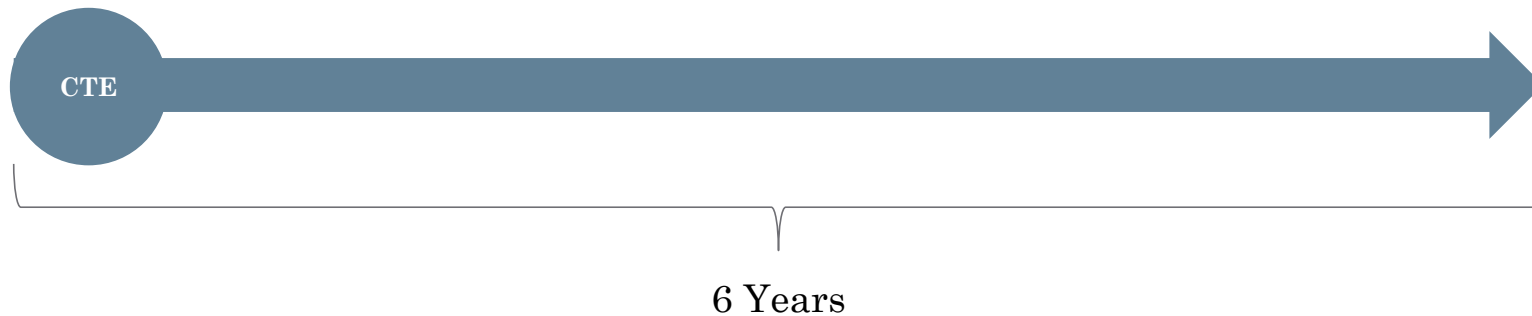
Note: Only data cells with 20 or more students are shown

# CTE Rate: Definition

Percentage of CTE students who complete with a degree or certificate, or transfer

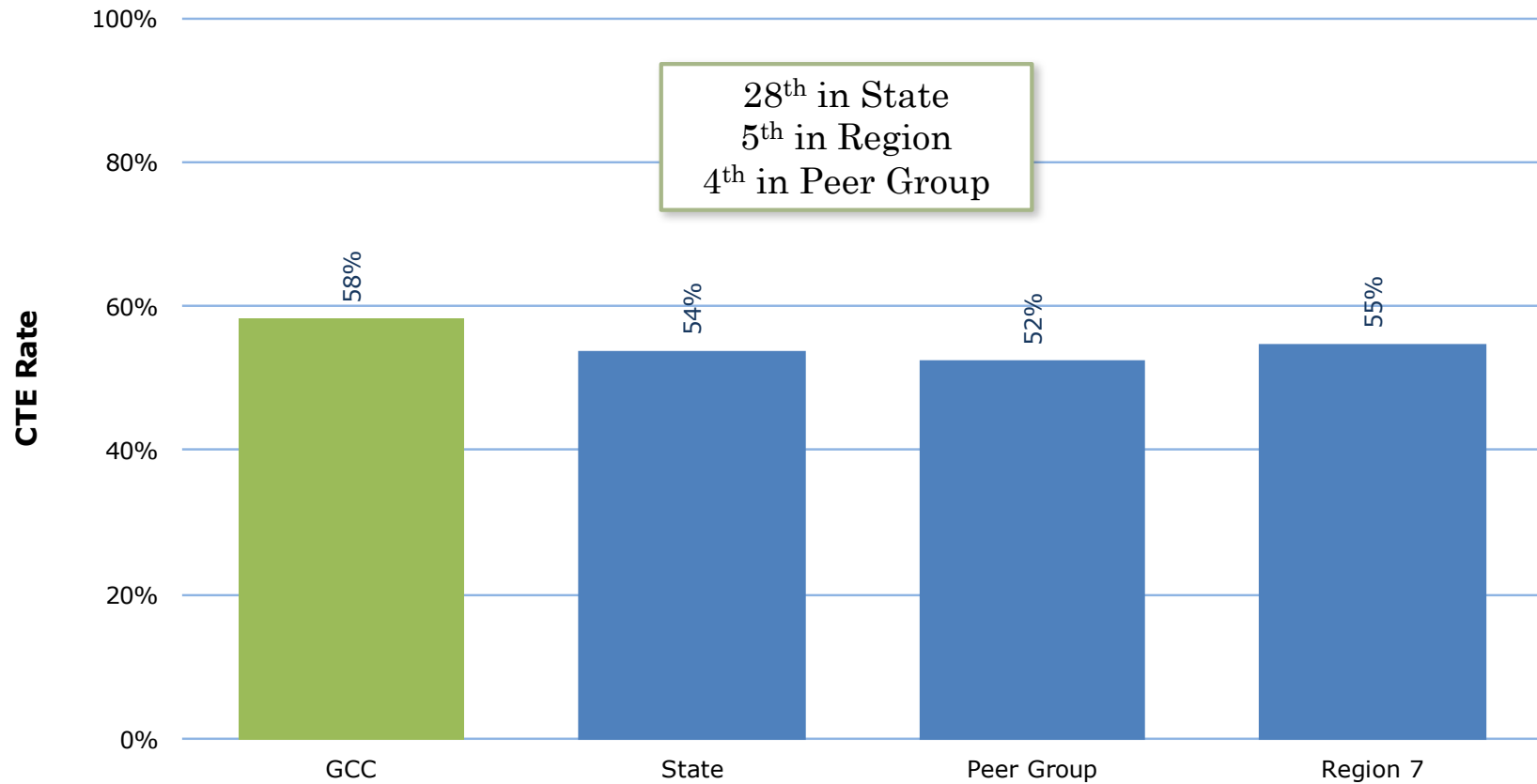
Students enrolling in a CTE course and completing 8 or more units in the same discipline within 3 years

Completed degree or certificate, transferred, or became transfer prepared (60+ transferable units with GPA of 2.0+)

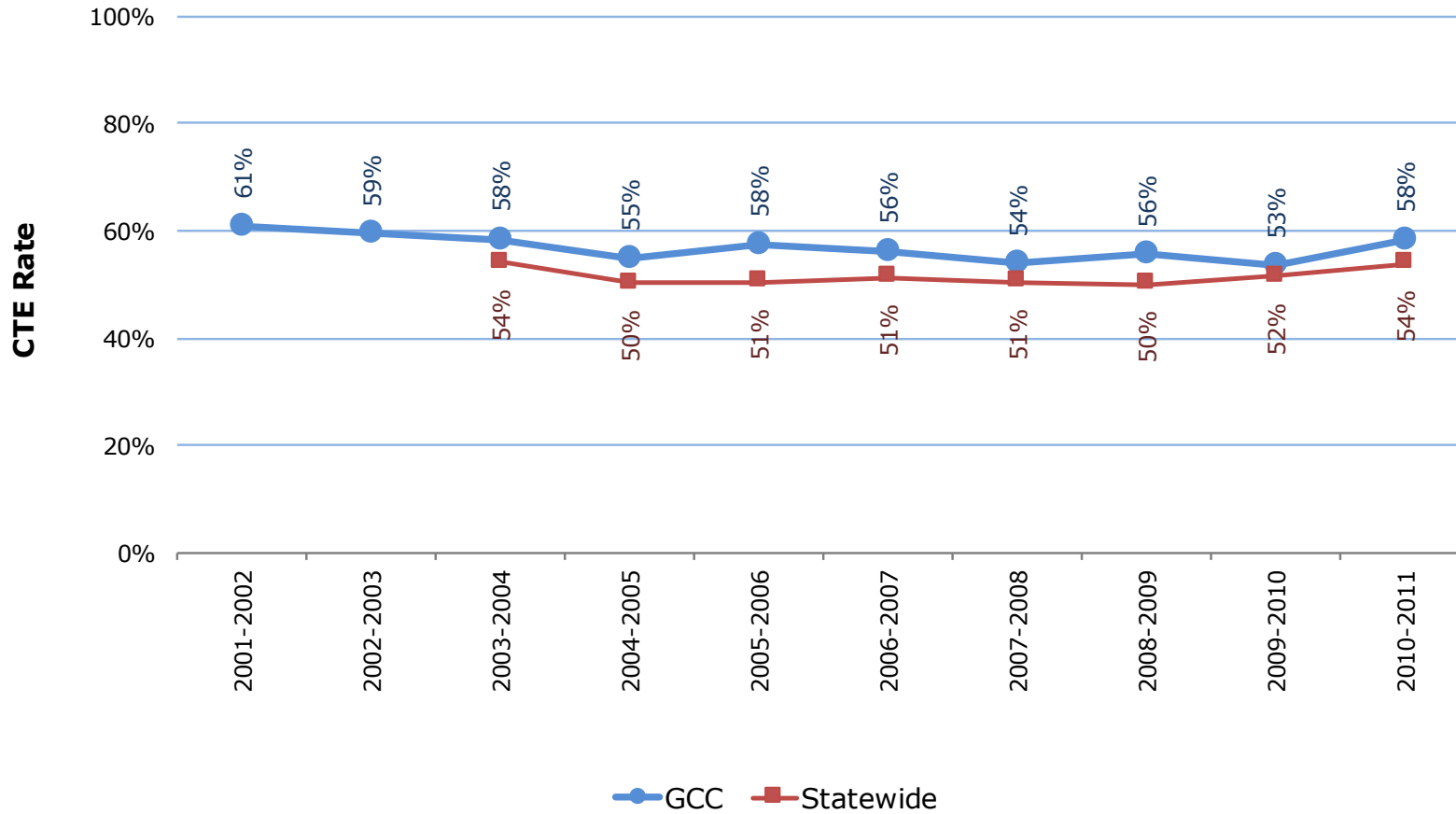




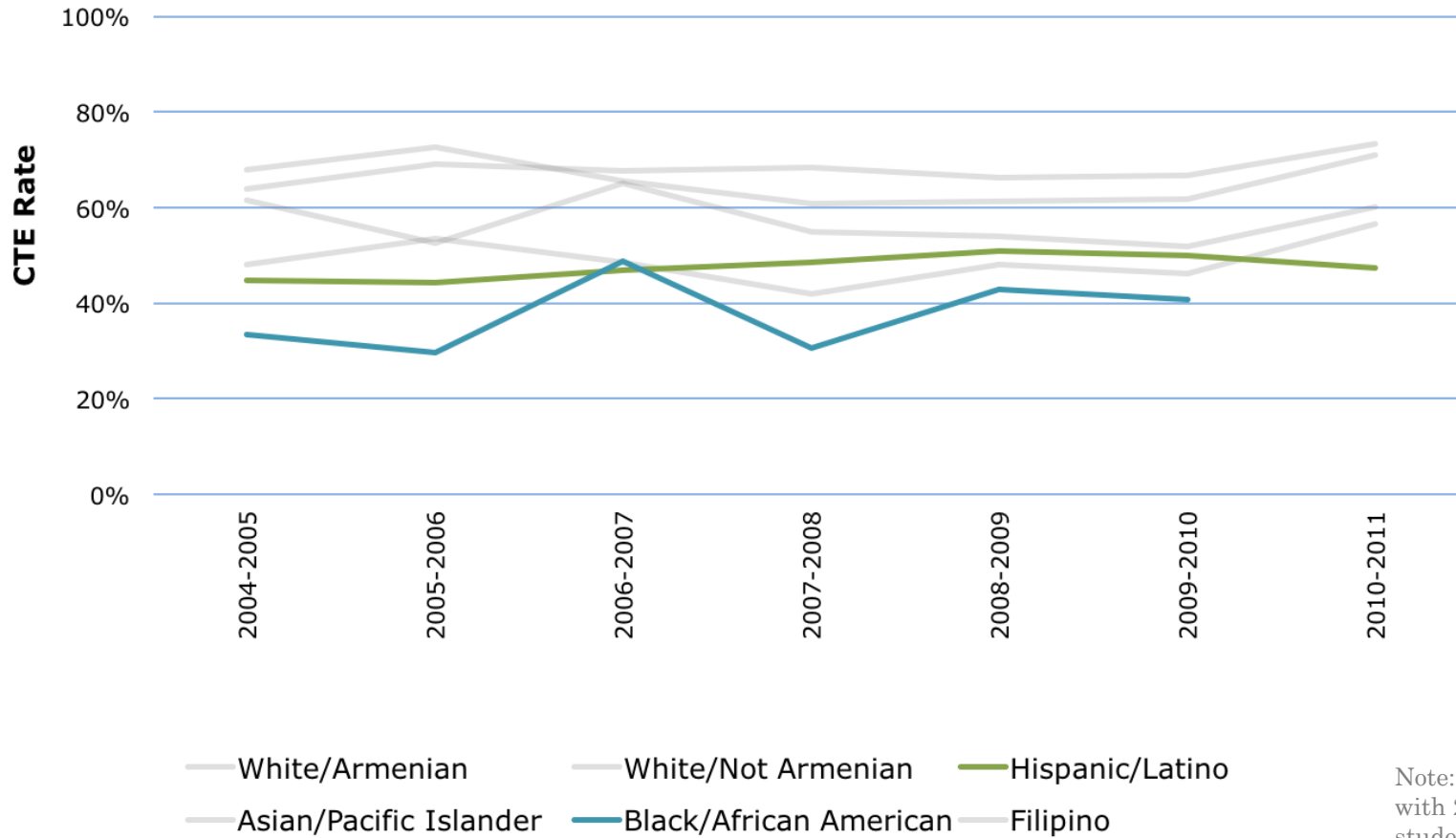
# CTE Rate: 2010-11 Cohort



# CTE Rate: Trends



# CTE Rate: Gaps



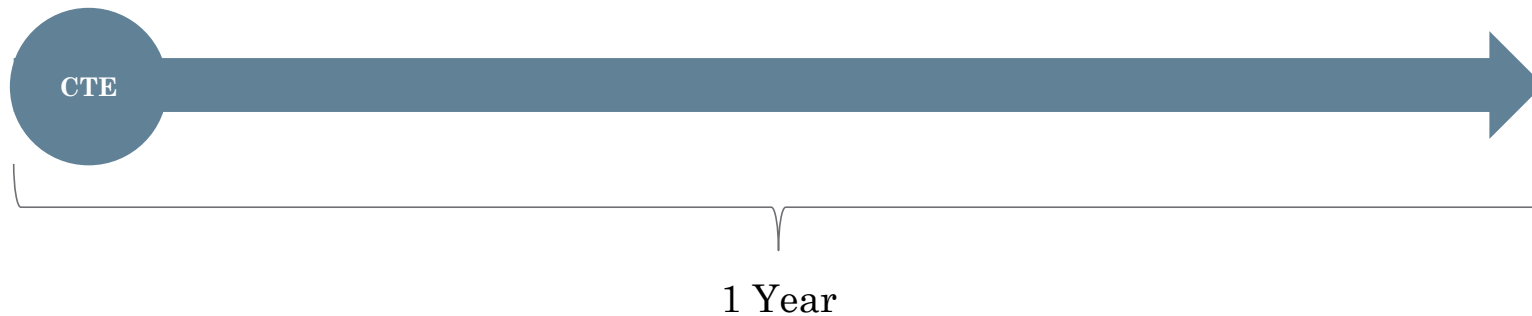
Note: Only data cells with 20 or more students are shown

# Skills Builders: Definition

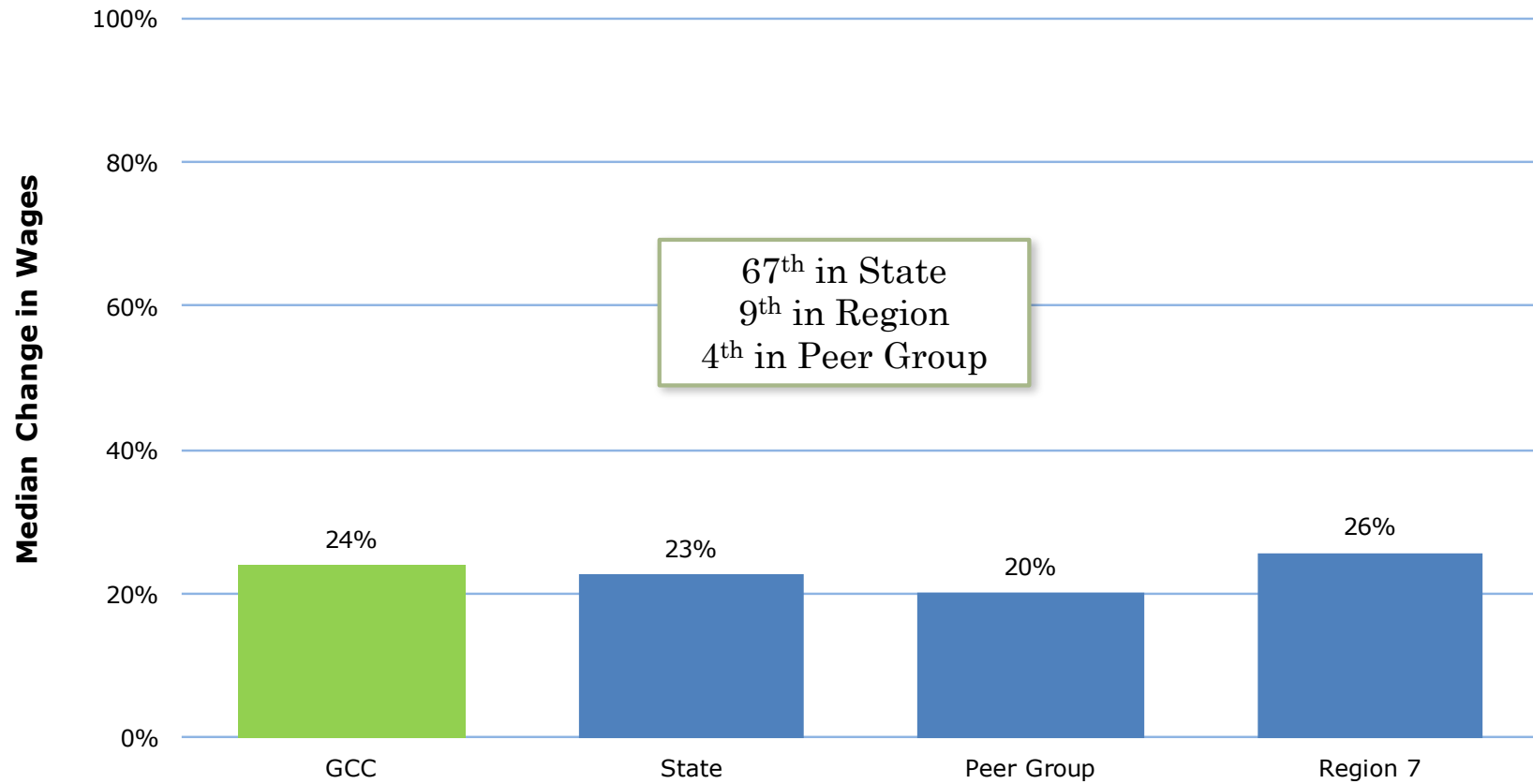
Change in wages for students completing CTE courses but not completing

Students passing higher-level CTE coursework in one academic year who did not return the following year or complete a degree or certificate or transfer

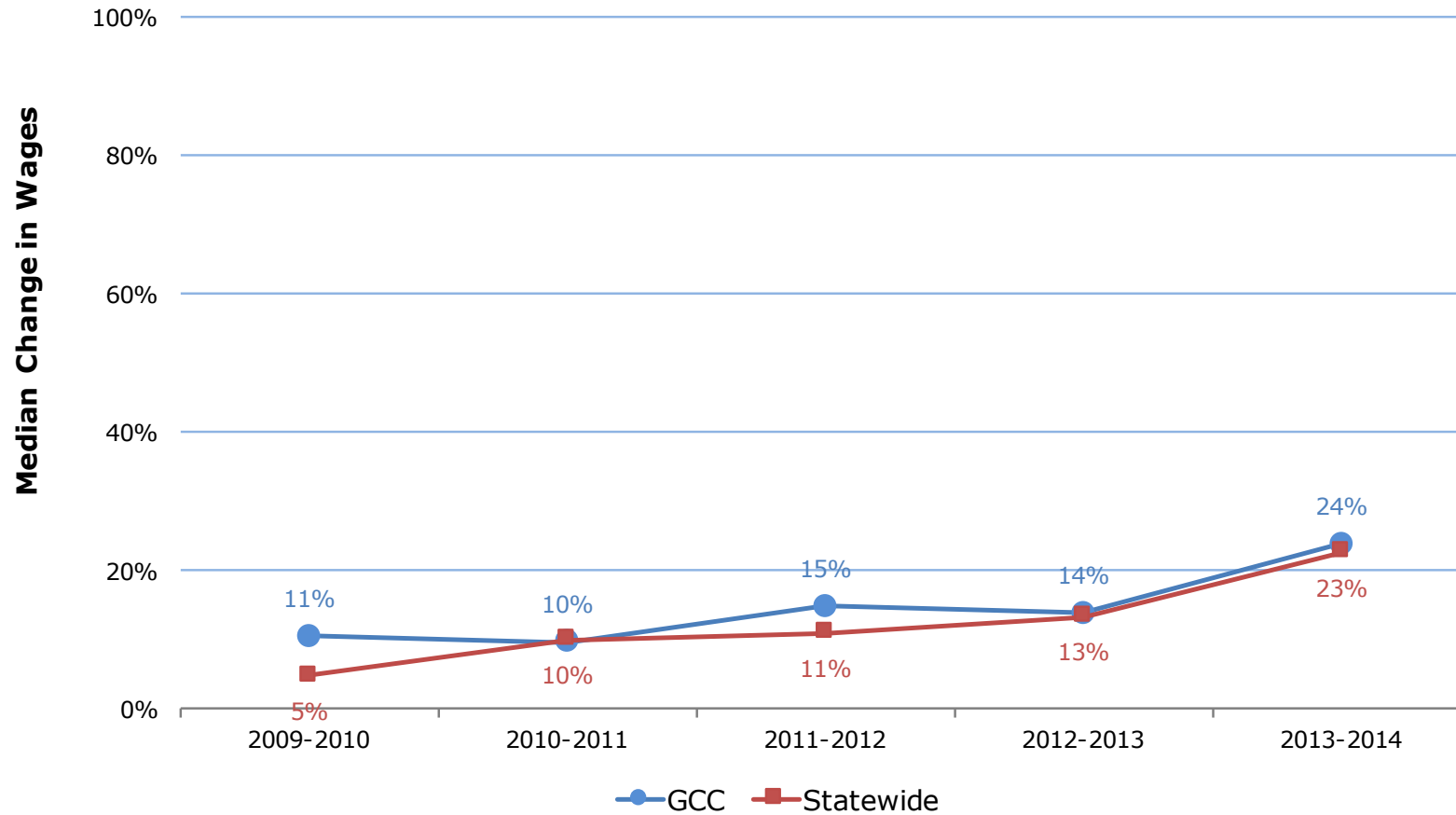
Median change in wages



# Skills Builders: 2013-2014 Students

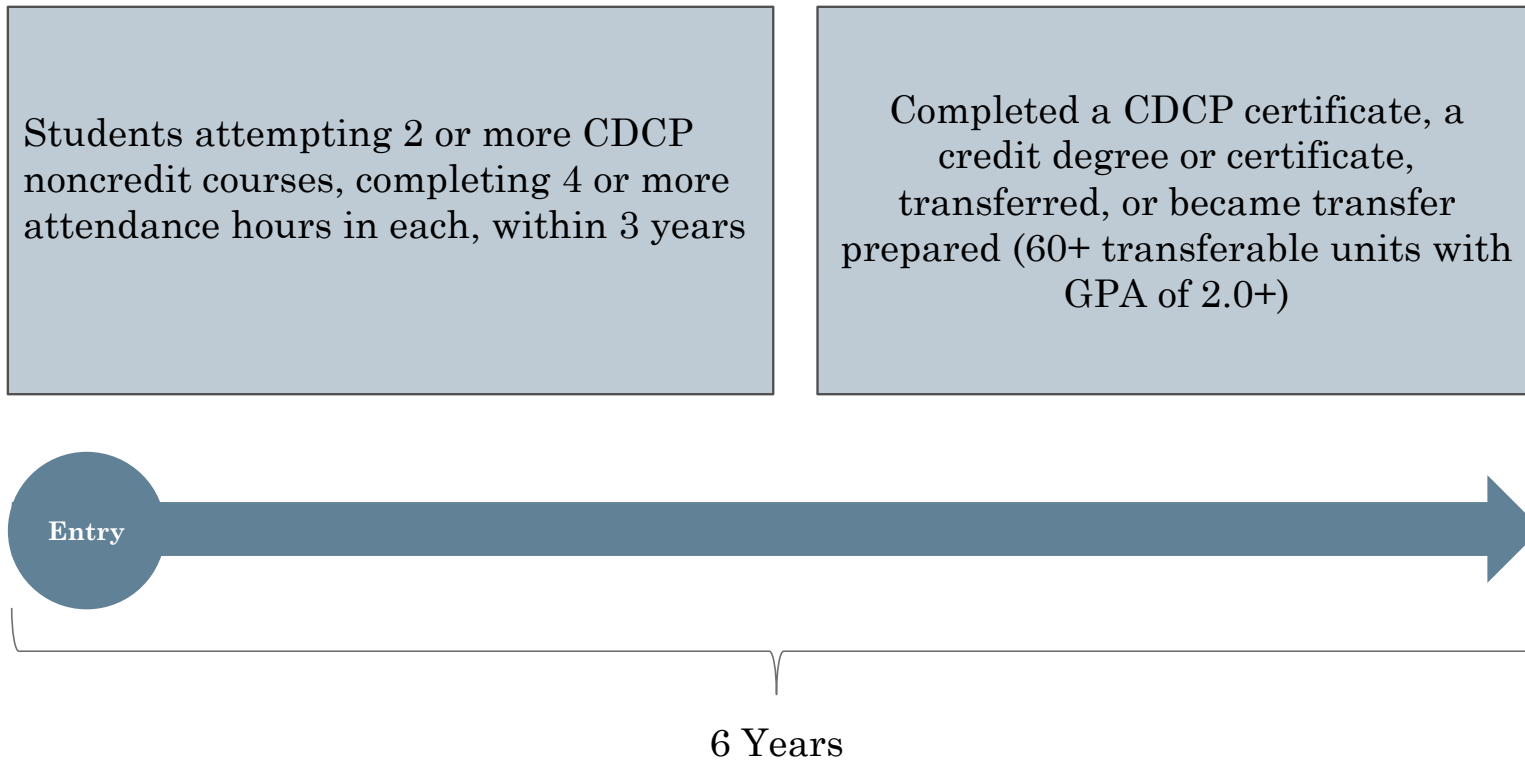


# Skills Builders: Trends

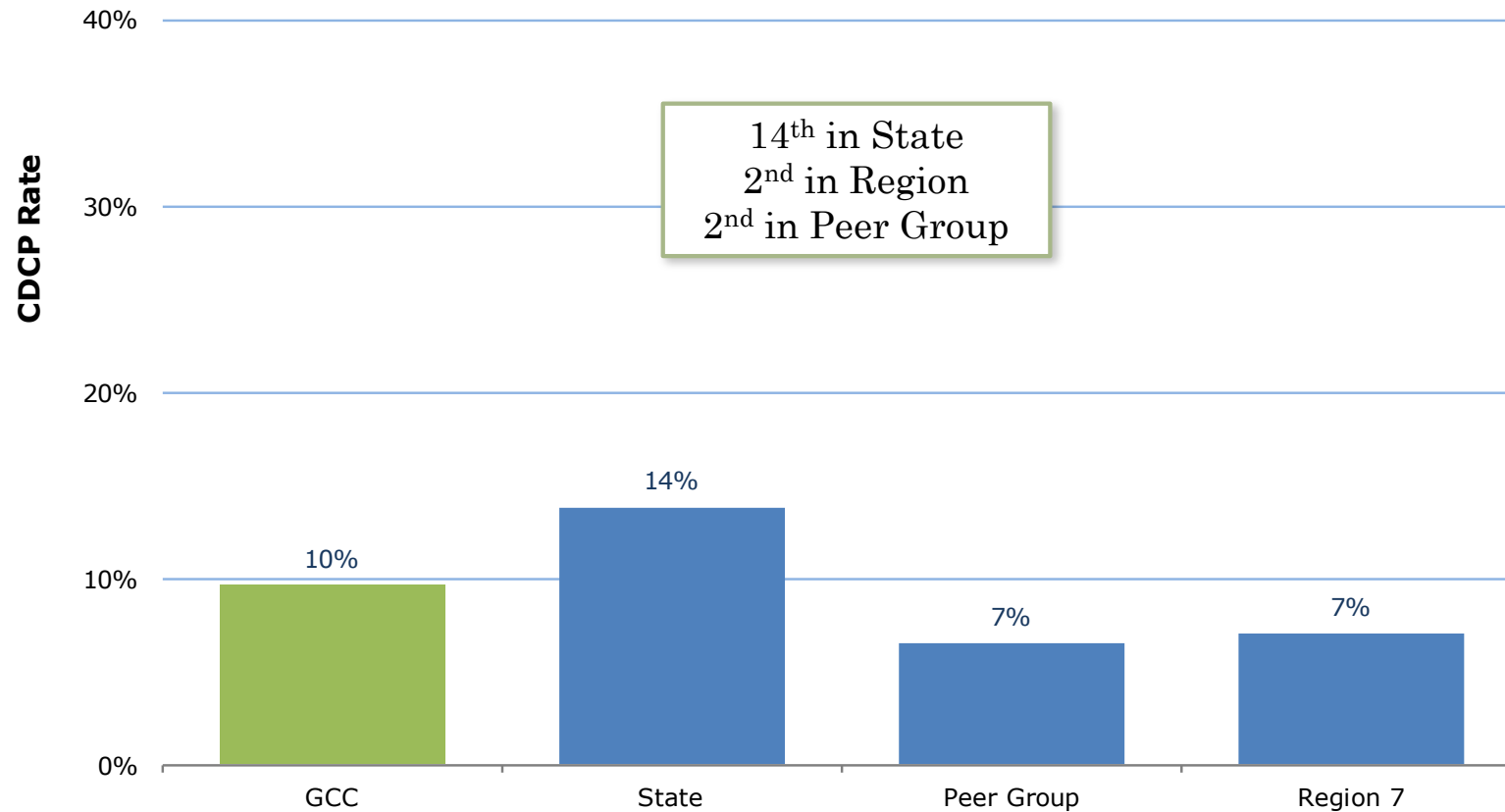


# CDCP Rate: Definition

Completion of Career Development and College Preparation (CDCP) noncredit students

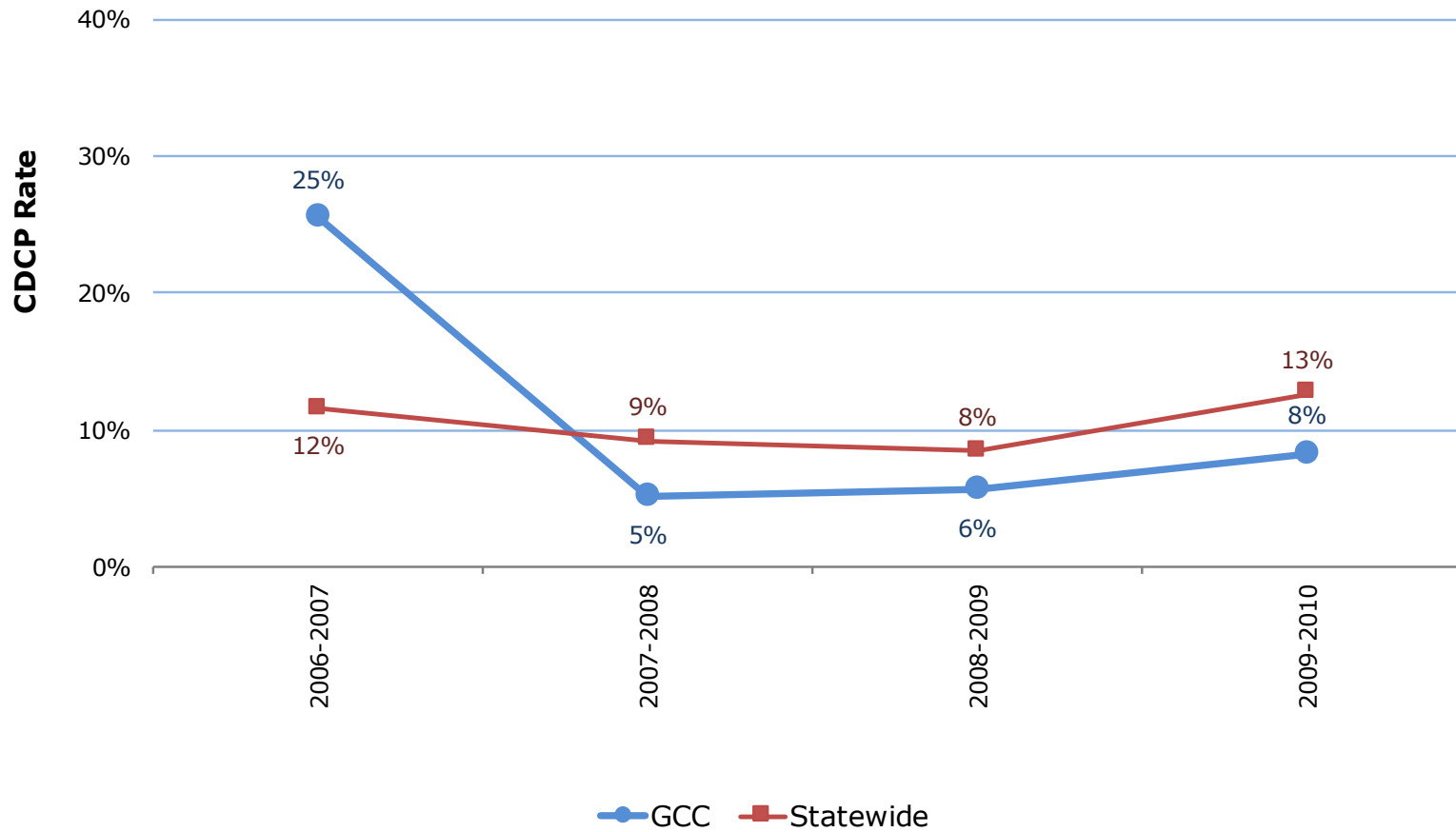


# CDCP Rate: 2010-2011 Cohort





# CDCP Rate: Trends



# CDCP Rate: Gaps

