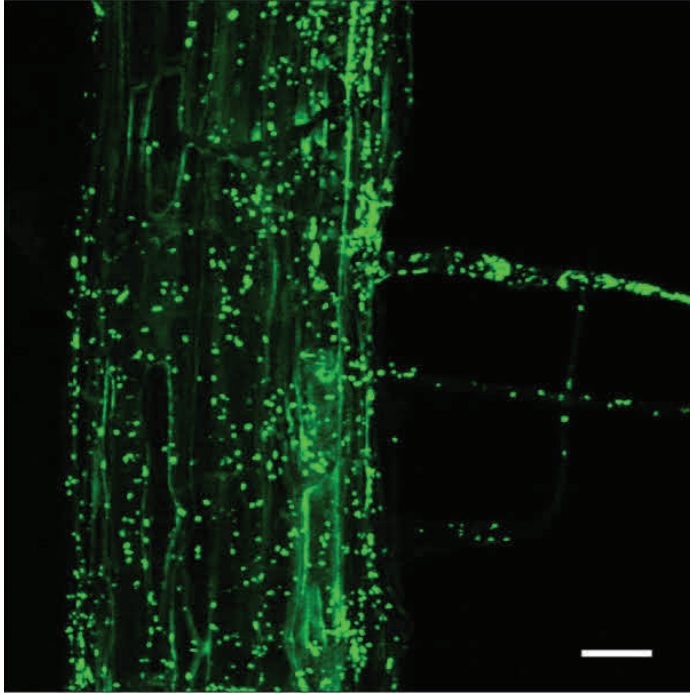




SCIENCE  
LECTURE  
SERIES



# Discovering the function of novel copies of *flhD* and *flhC* genes in plant growth-promoting bacterium

**LUKE BUTCHER**

*GCC alumni*

*@ UCLA, Microbiology, Immunology  
and Molecular Genetics (MIMG)*

**FIRAS HIKMAT**

*GCC alumni*

*@ UCLA, Biological Sciences*

**DR. SHELLEY THAI**

*Associate Professor of Biology  
Glendale Community College*

**TUESDAY, SEPTEMBER 26, 2017**

**12:30–1:30PM • CS 177**

**FLEX CREDIT AVAILABLE**

**FREE AND OPEN TO THE PUBLIC**

Sponsored by William Gohlke, in memory of  
OLE W. GOHLKE and STEPHANNE A. GOHLKE