

Student Success Scorecard 2018

Edward Karpp

Dean of Research, Planning & Grants

Board of Trustees Retreat – February 22, 2019

Scorecard Metrics for 2018

- **Basic Skills Metrics**
 - Remedial/ESL
 - Transfer Level Achievement
- **Completion Metrics**
 - Persistence
 - 30 Units
 - Degree/Transfer Completion
- **CTE (Career Technical Education) Metrics**
 - CTE Rate
 - Skills Builders
- **CDCP (Career Development and College Preparation) Rate**

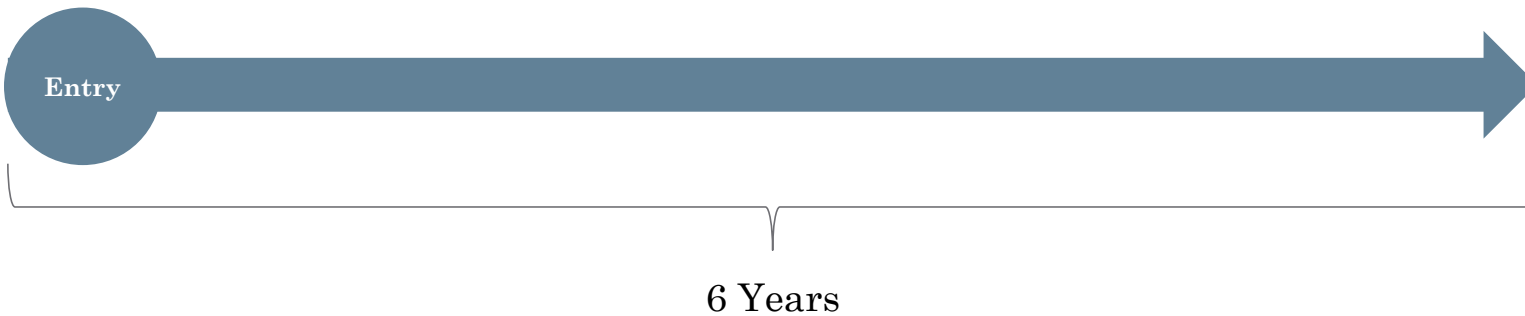
Comparisons

- **Statewide Average**
- **Peer Group Average (New Peer Group for 2018)**
 - Alameda, Cabrillo, Chabot, Evergreen Valley, Glendale, LA City, LA Valley, Laney, Merritt, Napa Valley, Sacramento City, San Diego City, San Jose City, Santa Monica, Santa Rosa, Santiago Canyon, Solano, West LA, Woodland (19 colleges)
- **Region 7 Average**
 - Compton, East LA, El Camino, Glendale, LA City, LA Harbor, LA Mission, LA Pierce, LA Southwest, LA Trade Tech, LA Valley, Pasadena, Santa Monica, West LA (14 colleges)

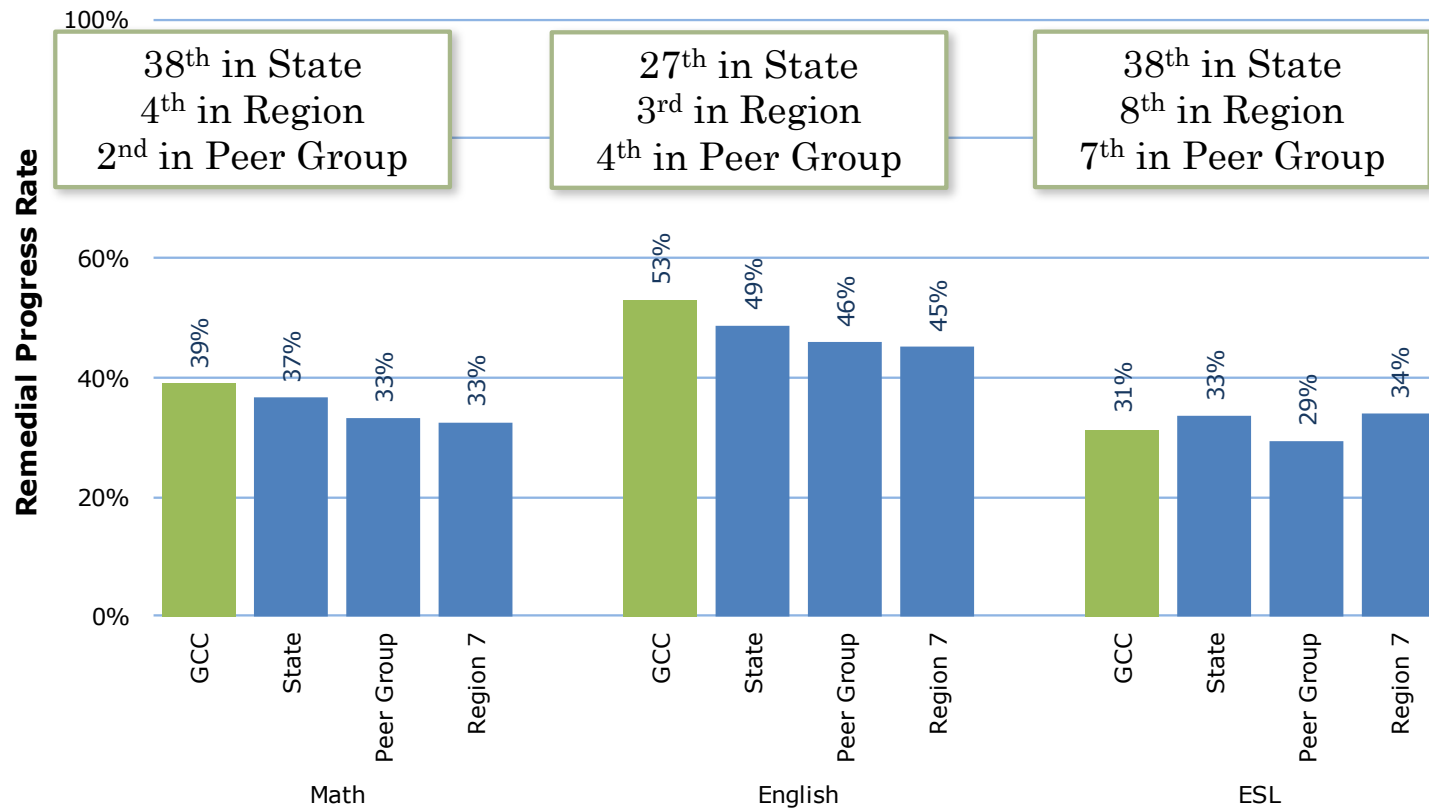
Remedial / ESL Metrics: Definitions

Percentage of basic skills Math/English/ESL students who pass college-level courses

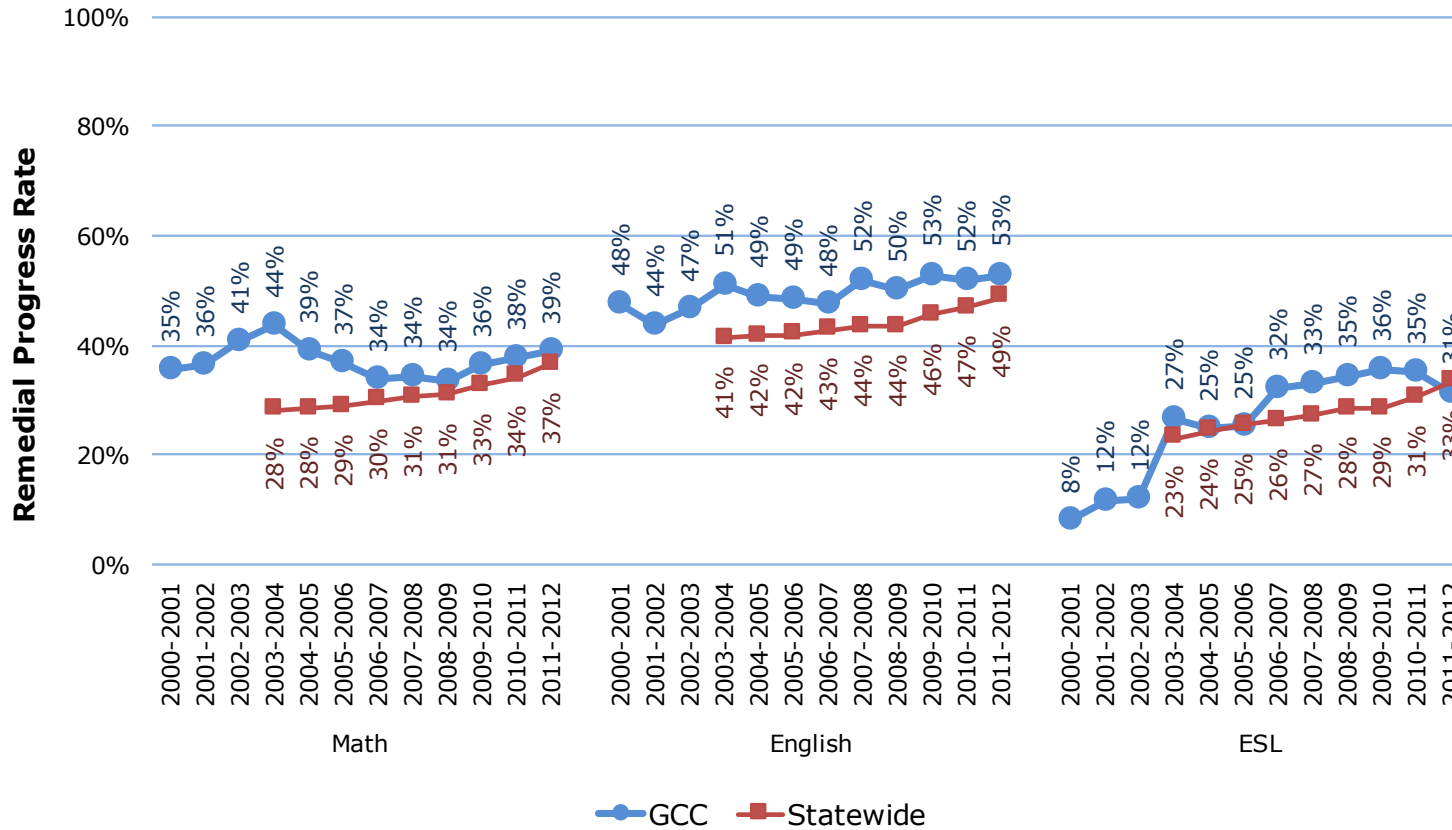
Attempted Math course 2-4 levels below transfer	Passed transferable or associate degree applicable Math course
Attempted English course 1-4 levels below transfer	Passed transferable or associate degree applicable English course
Attempted ESL course below transfer	Passed associate degree applicable English course



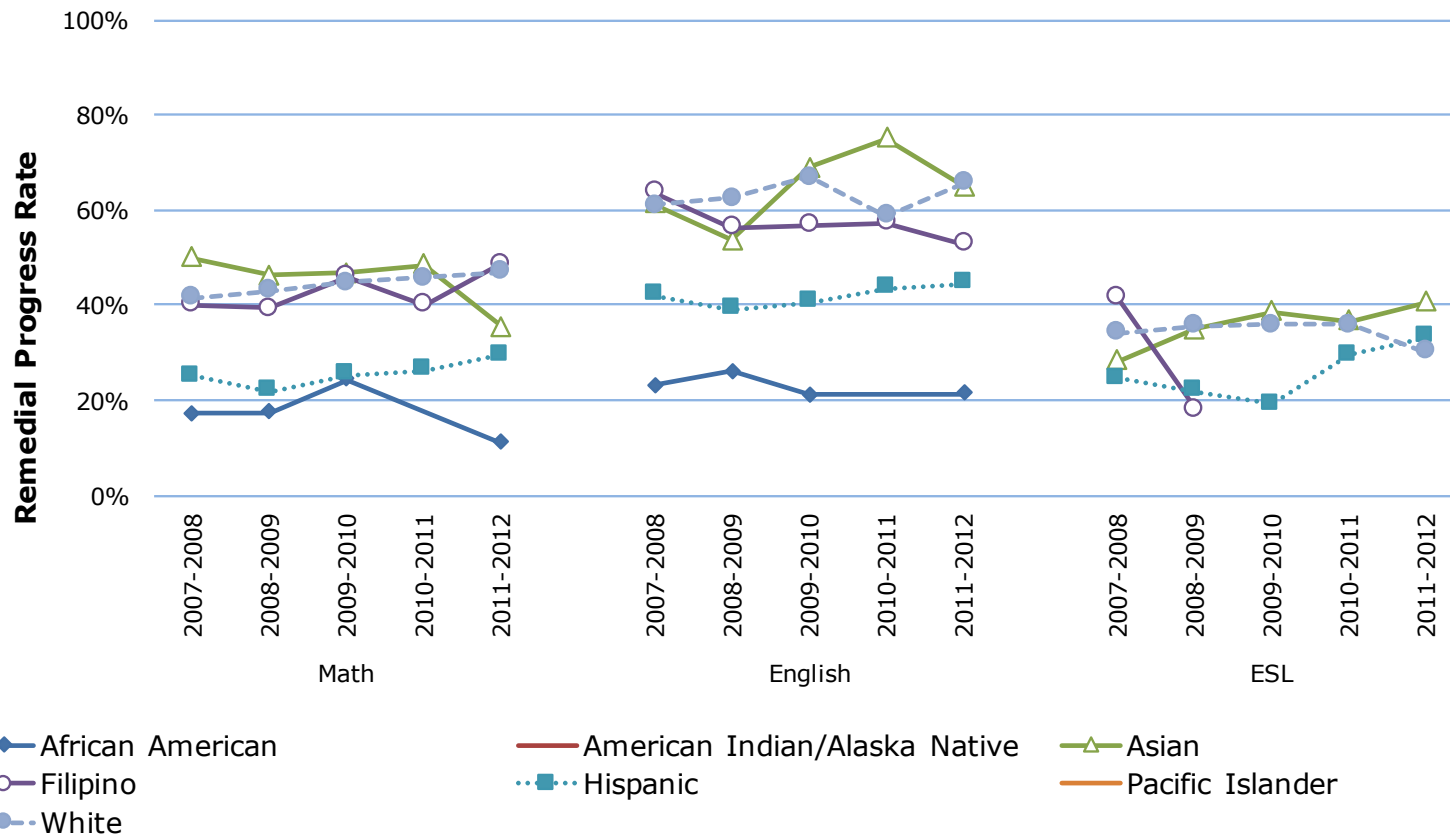
Remedial / ESL Metrics: 2011-12 Cohort



Remedial / ESL Metrics: Trends



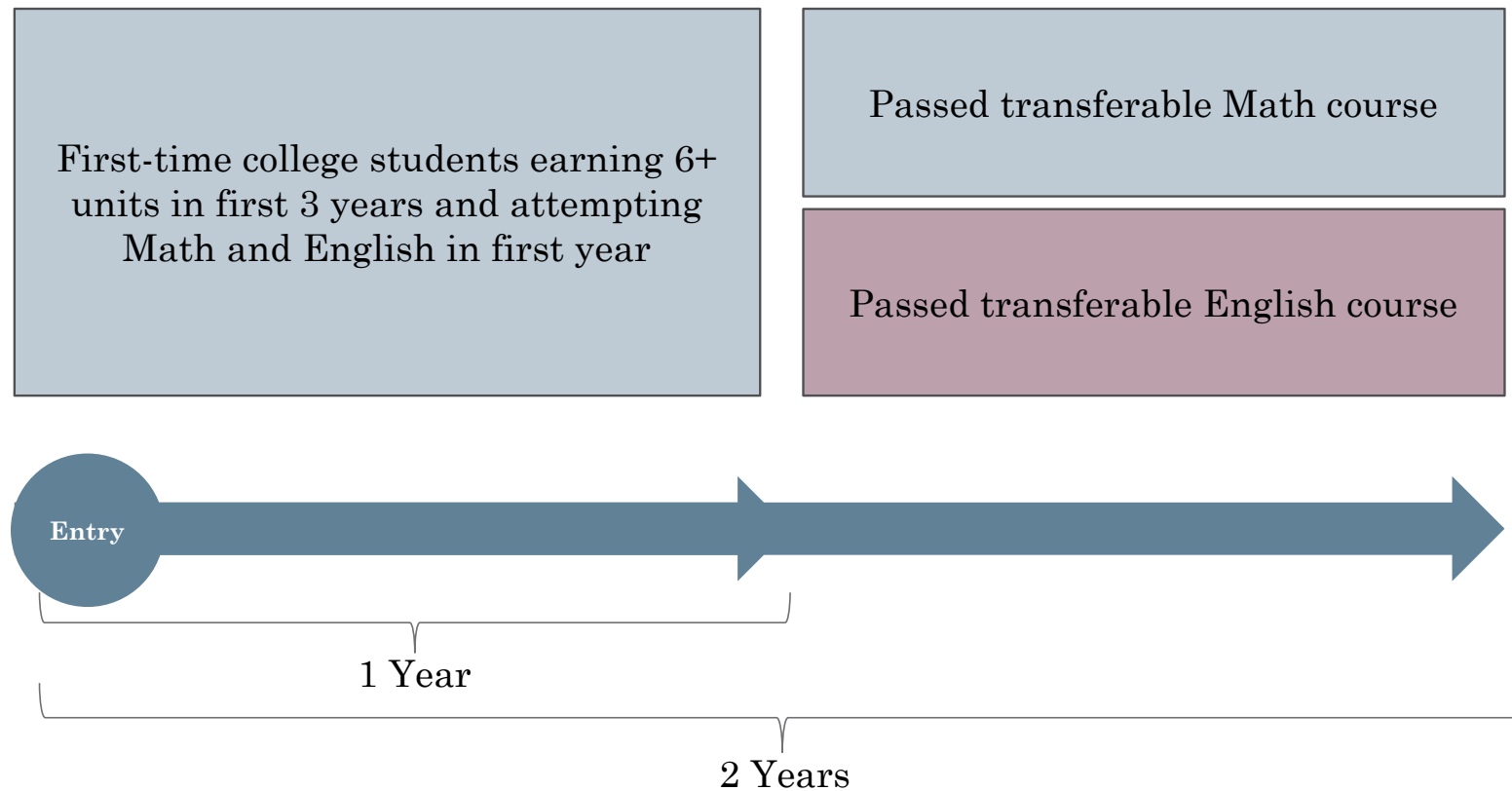
Remedial / ESL Metrics: Gaps



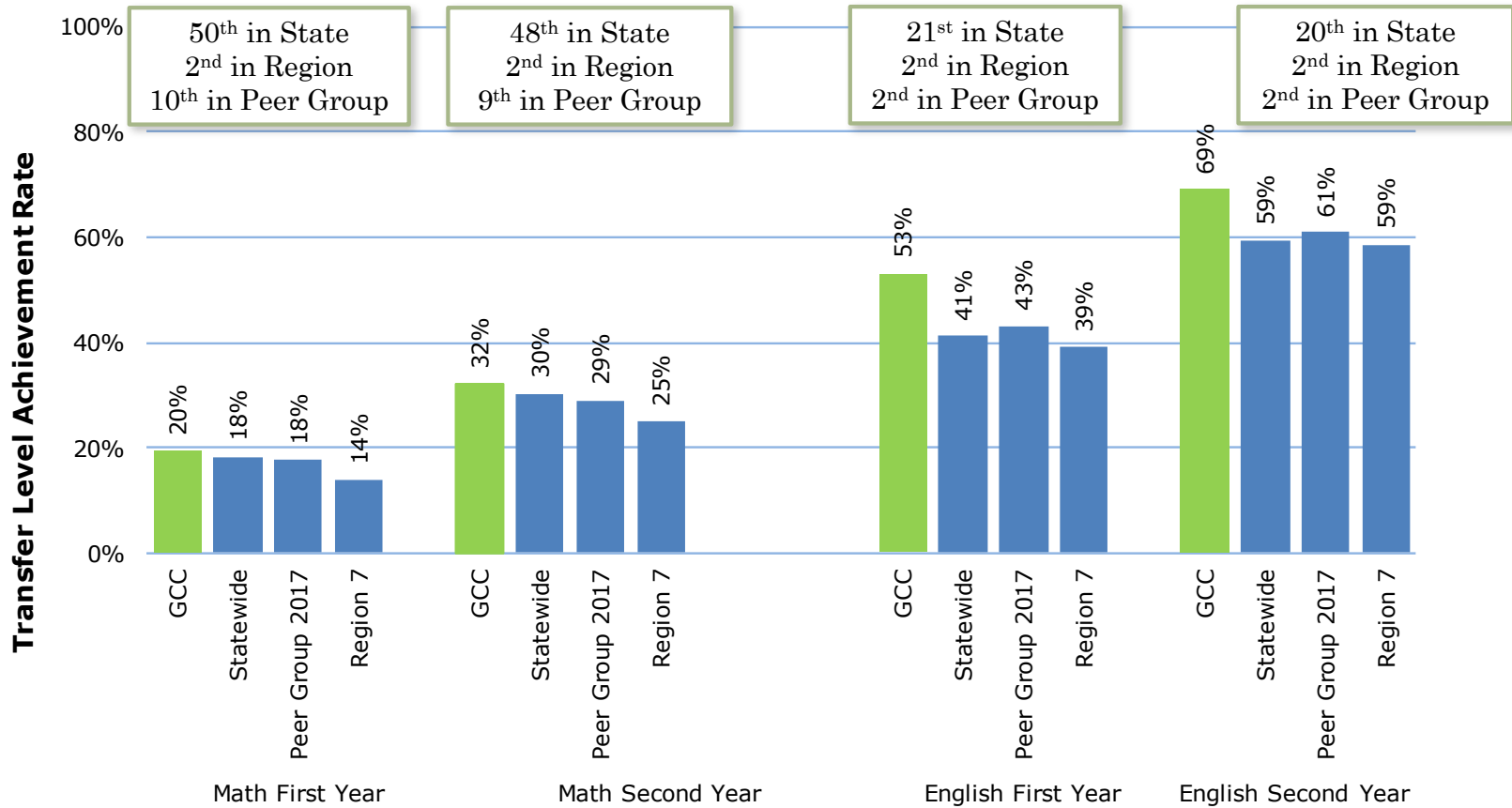
Note: Only data cells with 10 or more students are shown

Transfer Level Achievement: Definitions

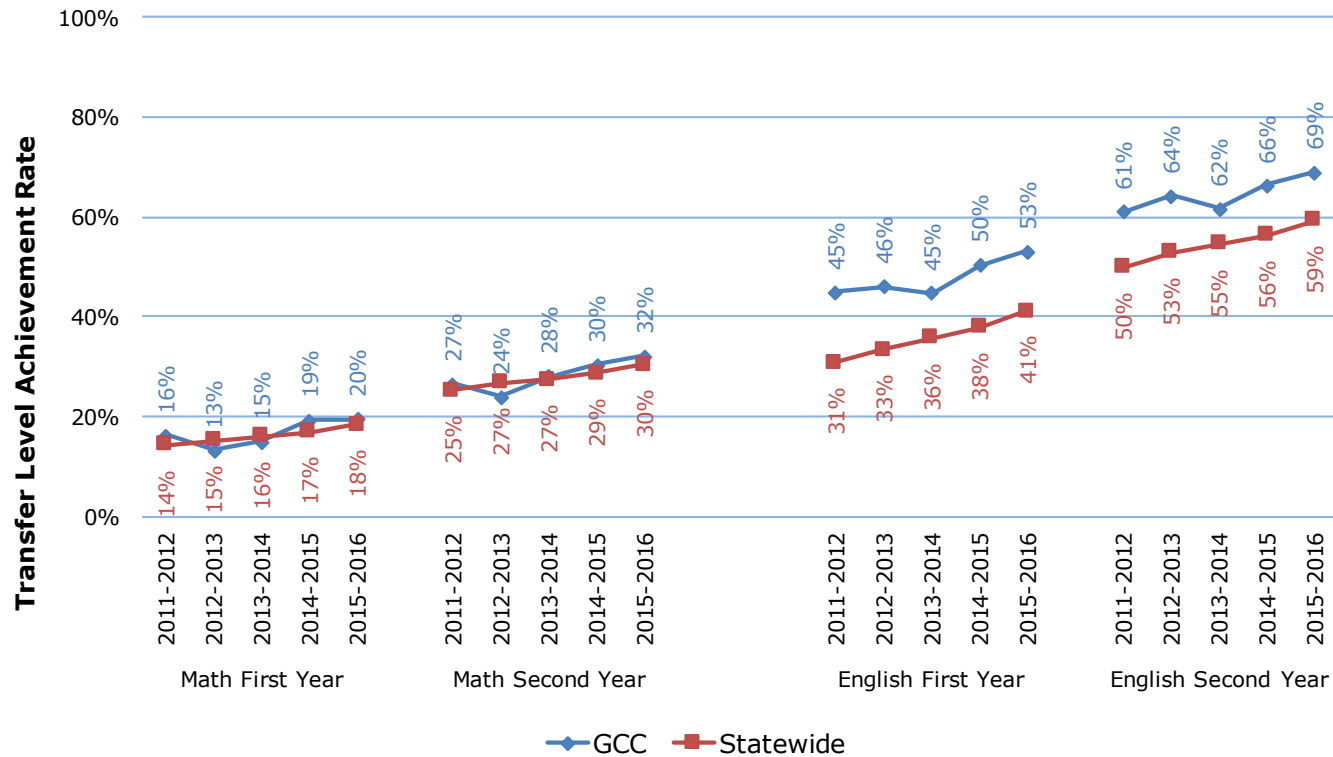
Percentage of new students who pass transferable Math and English courses



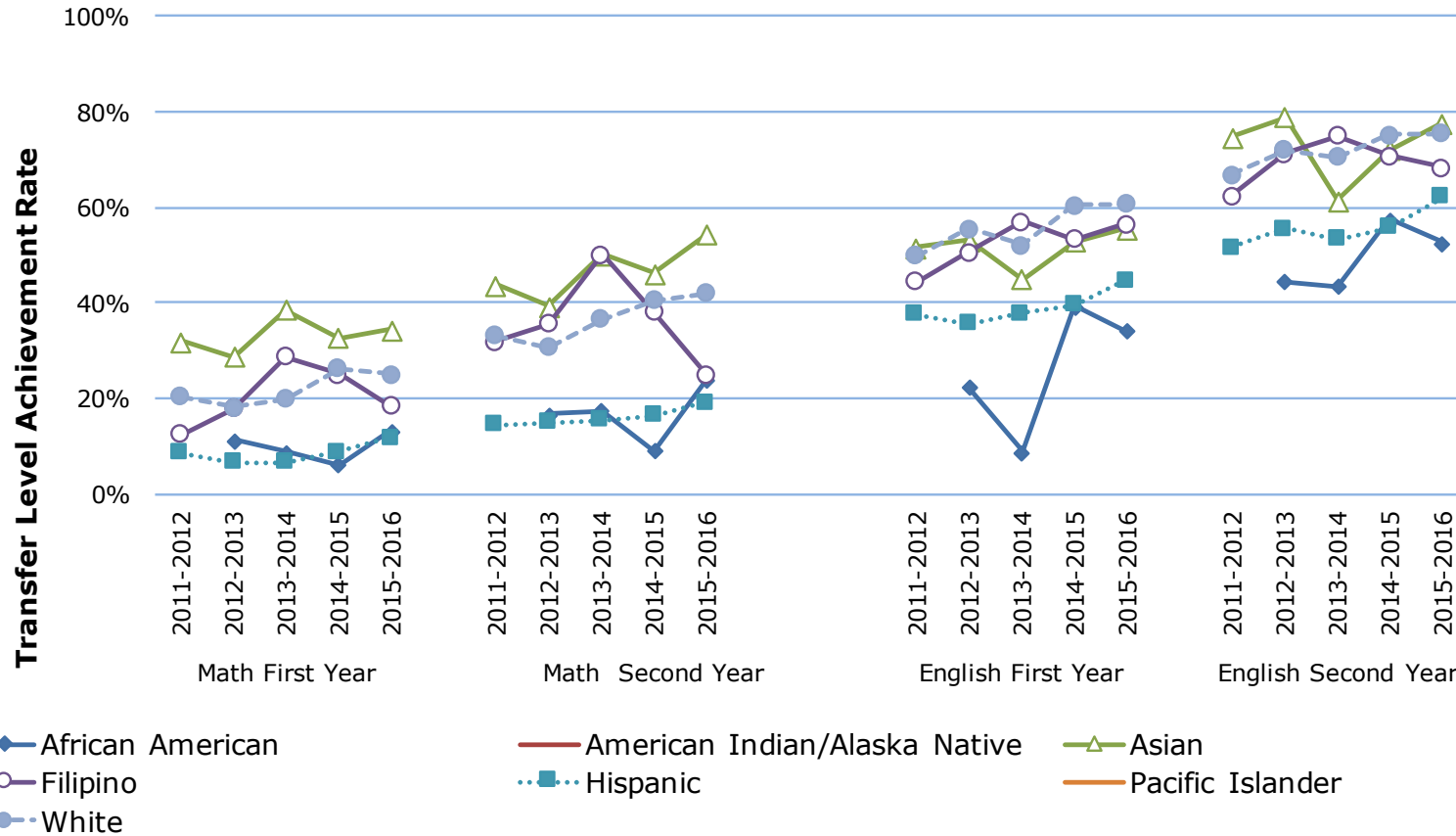
Transfer Level Achievement: 2015-16 Cohort



Transfer Level Achievement: Trends



Transfer Level Achievement: Gaps



Note: Only data cells with 10 or more students are shown

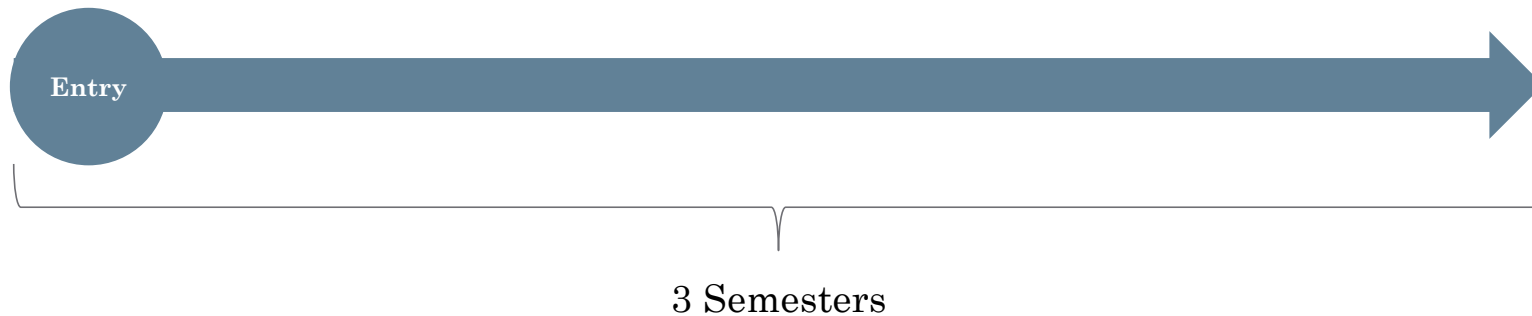
Persistence Rate: Definition

Percentage of new students enrolled in three consecutive semesters

First-time college students earning 6+ units in first 3 years and attempting Math or English in first 3 years

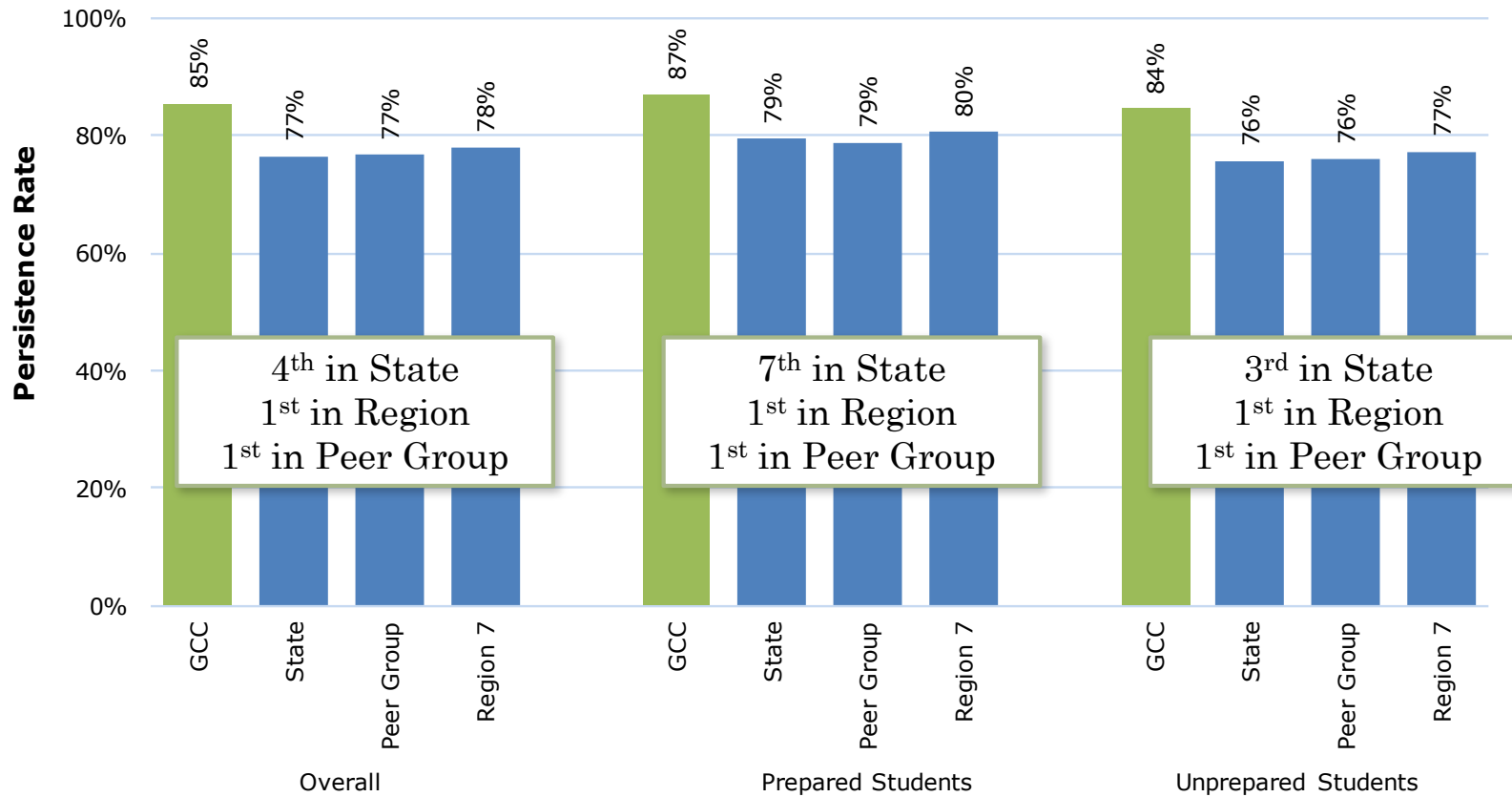
- Overall
- Prepared Students*
- Unprepared Students*

Enrolled in credit course during three consecutive primary terms (Fall/Spring)

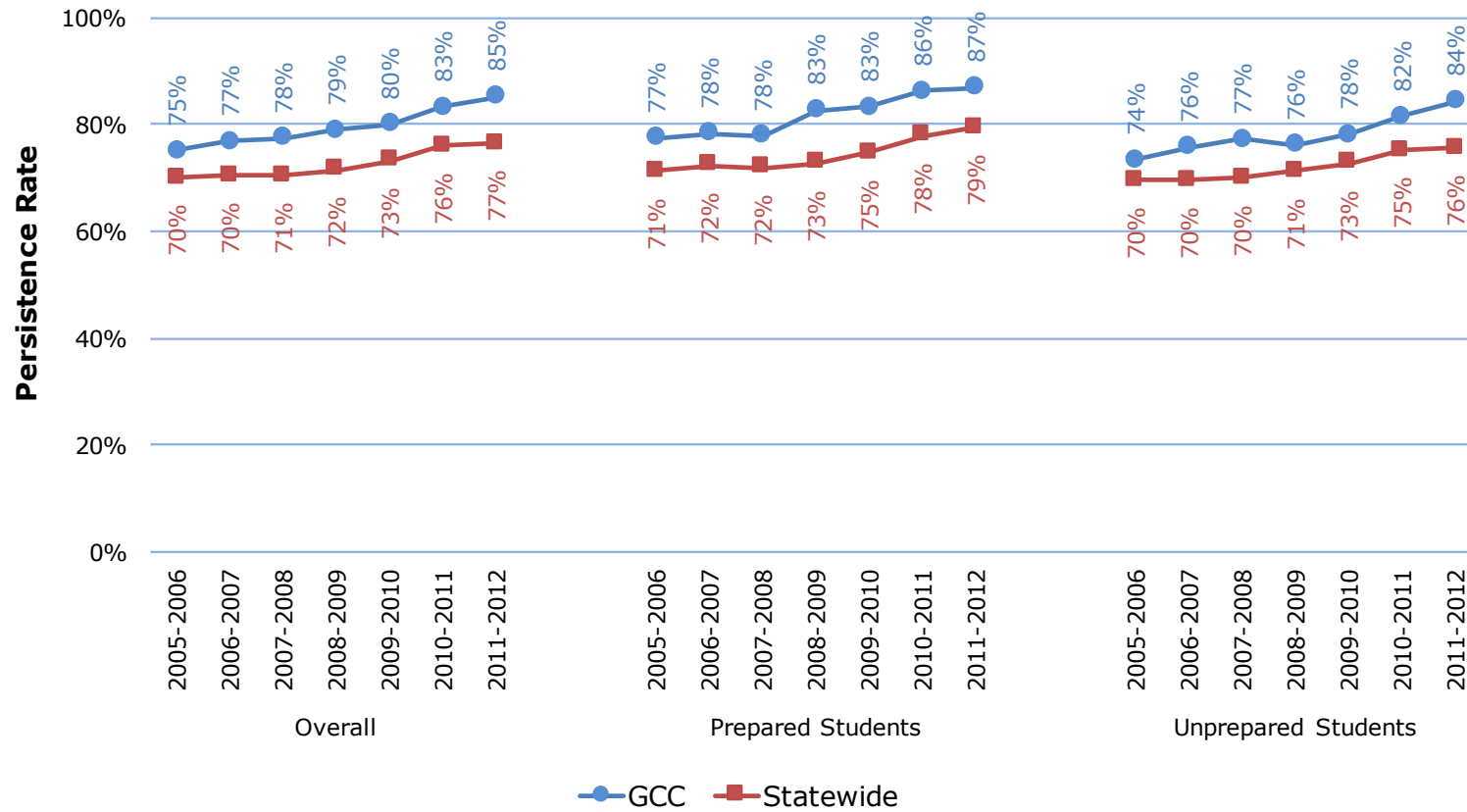


* Prepared students' first English course was transferable and first Math course was transferable or associate degree applicable.

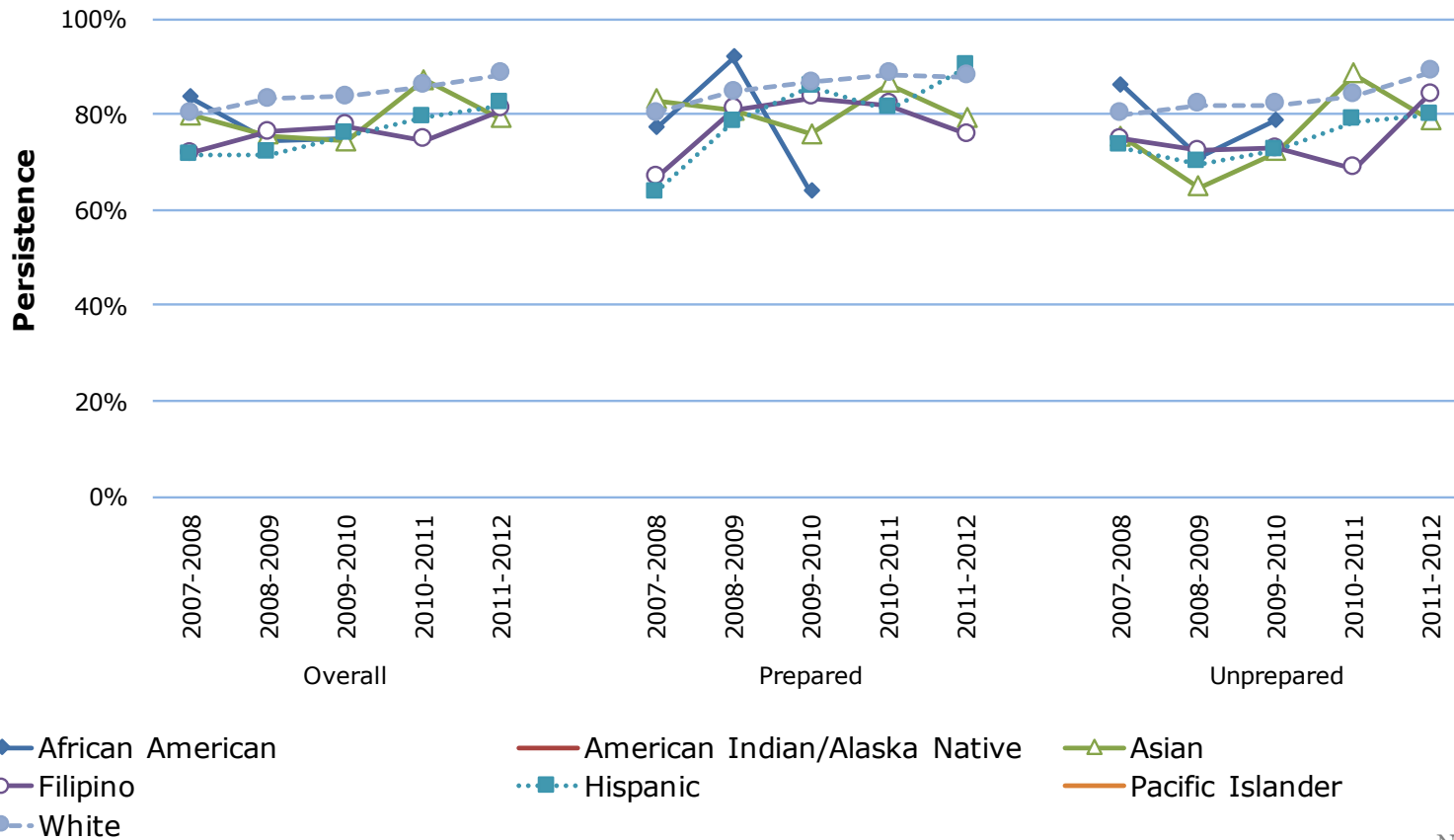
Persistence Rate: 2011-12 Cohort



Persistence Rate: Trends



Persistence Rate: Gaps



Note: Only data cells with 10 or more students are shown

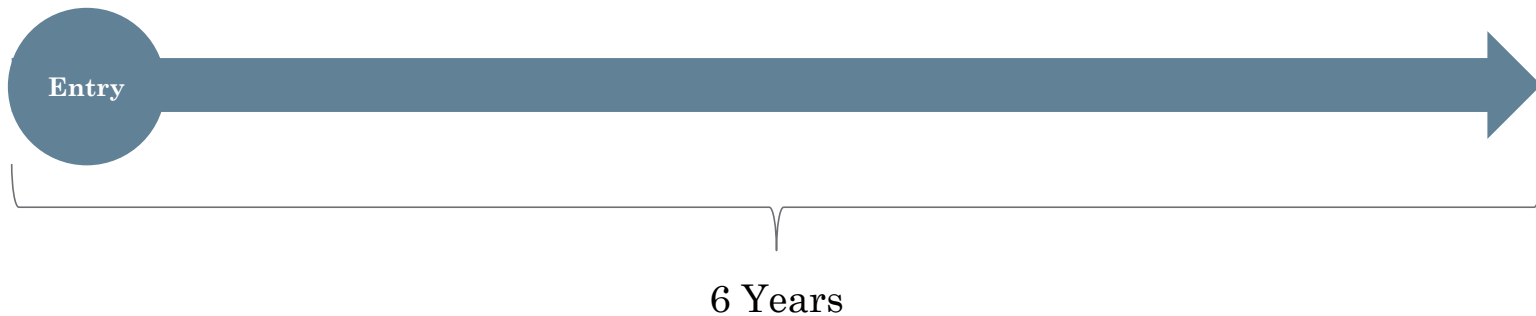
30 Unit Rate: Definition

Percentage of new students who earn 30 or more units

First-time college students earning 6+ units in first 3 years and attempting Math or English in first 3 years

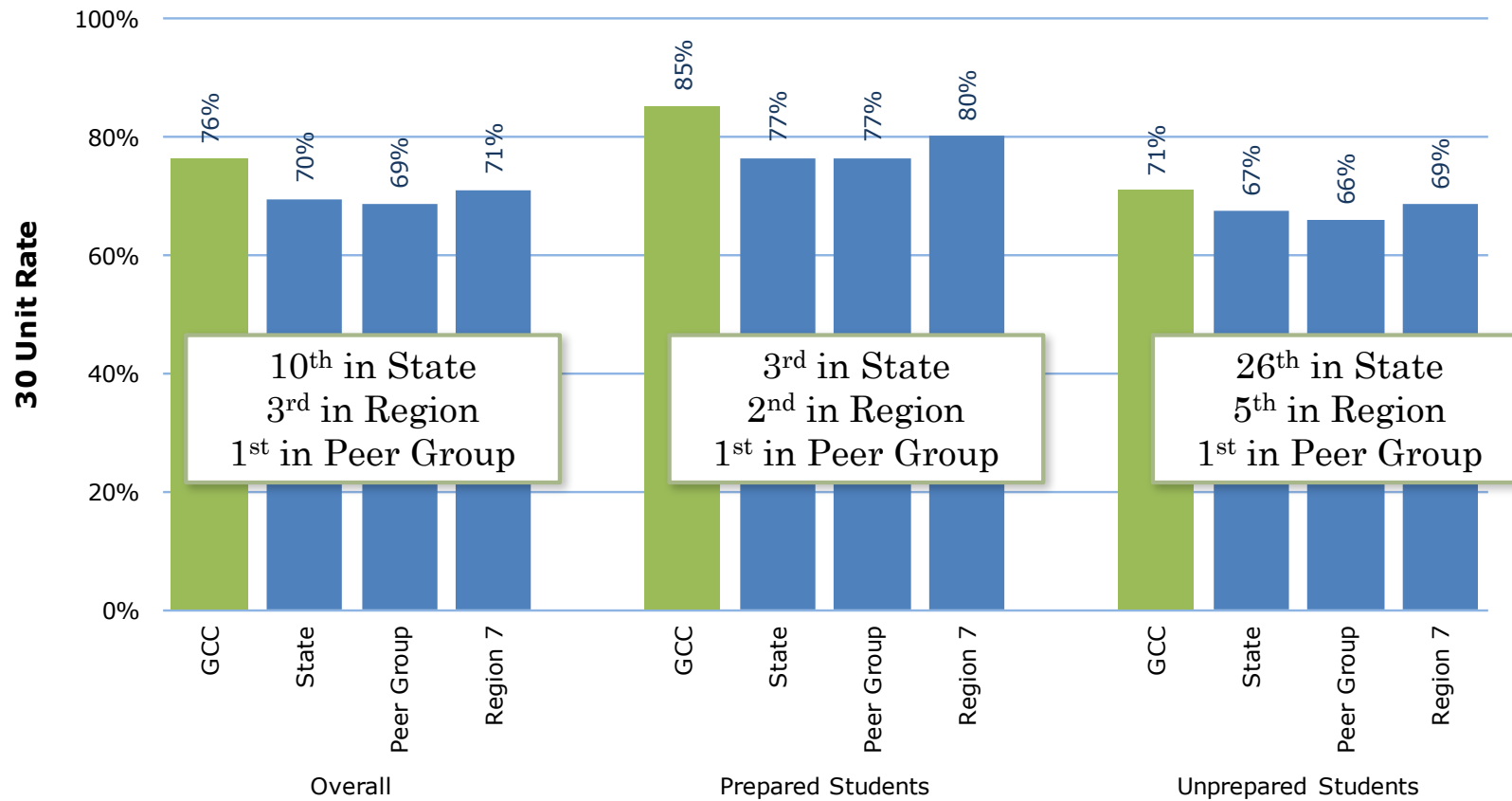
- Overall
- Prepared Students*
- Unprepared Students*

Earned 30+ units in California community college system

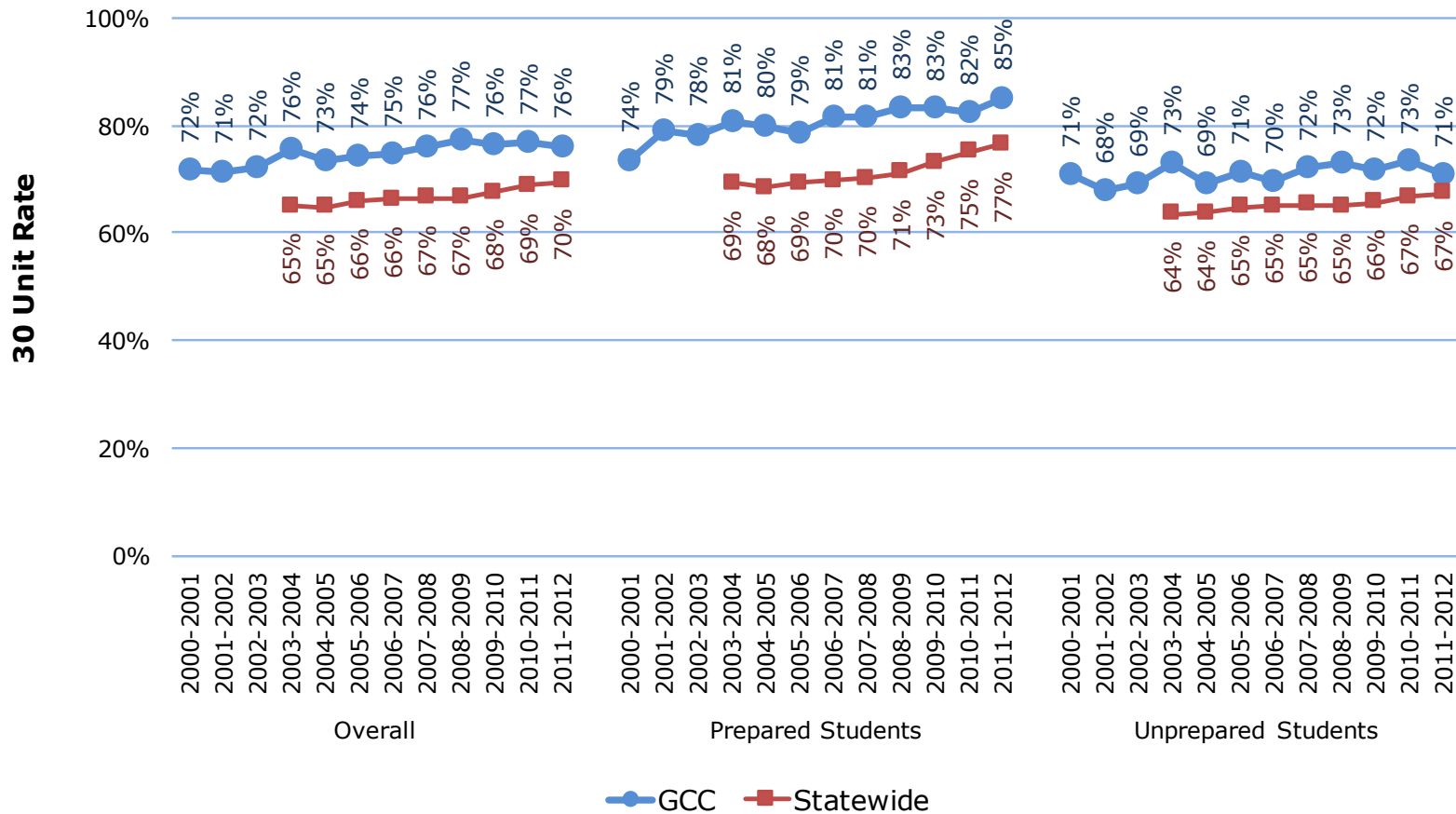


* Prepared students' first English course was transferable and first Math course was transferable or associate degree applicable.

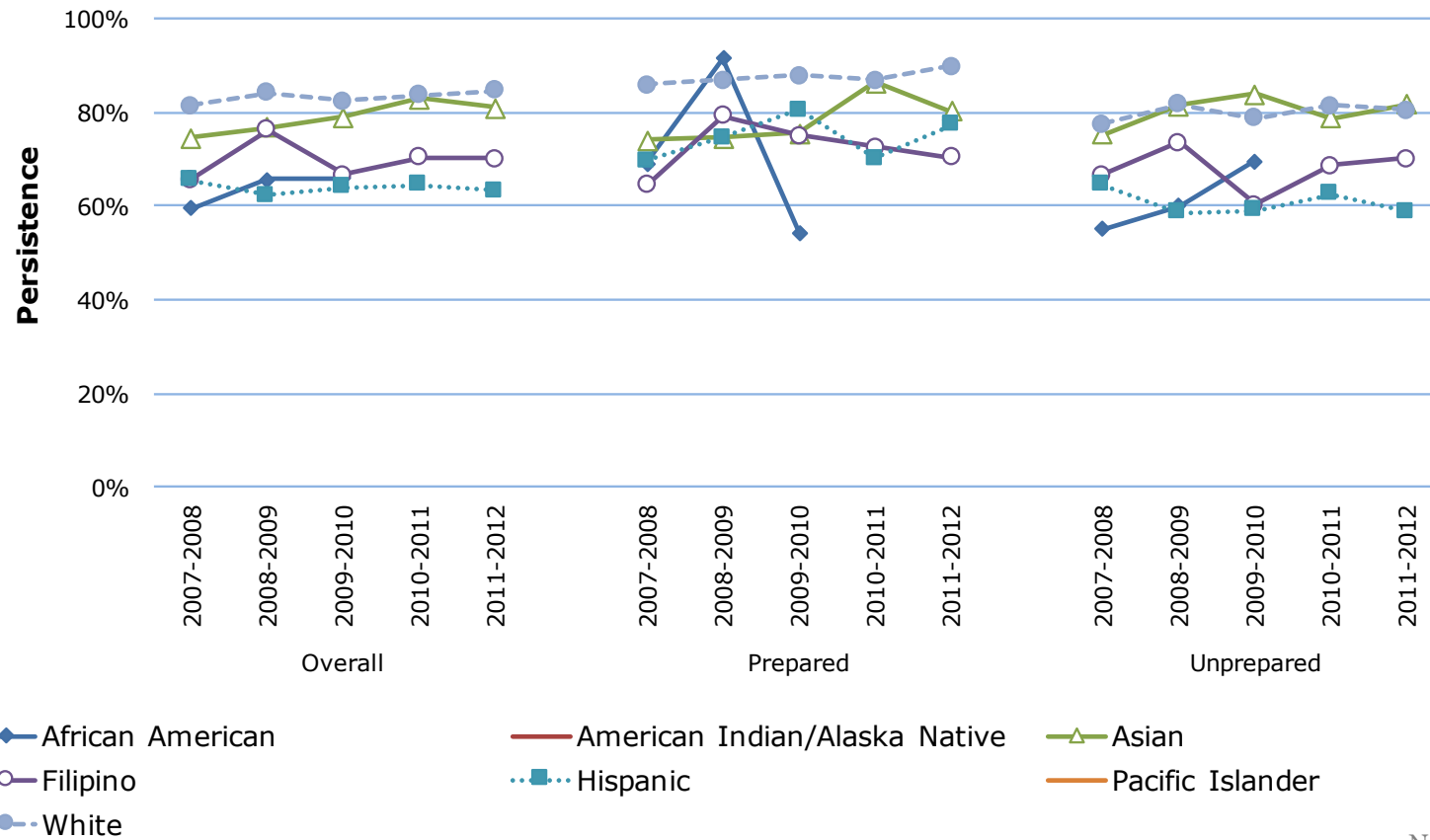
30 Unit Rate: 2011-12 Cohort



30 Unit Rate: Trends



30 Unit Rate: Gaps



Note: Only data cells with 10 or more students are shown

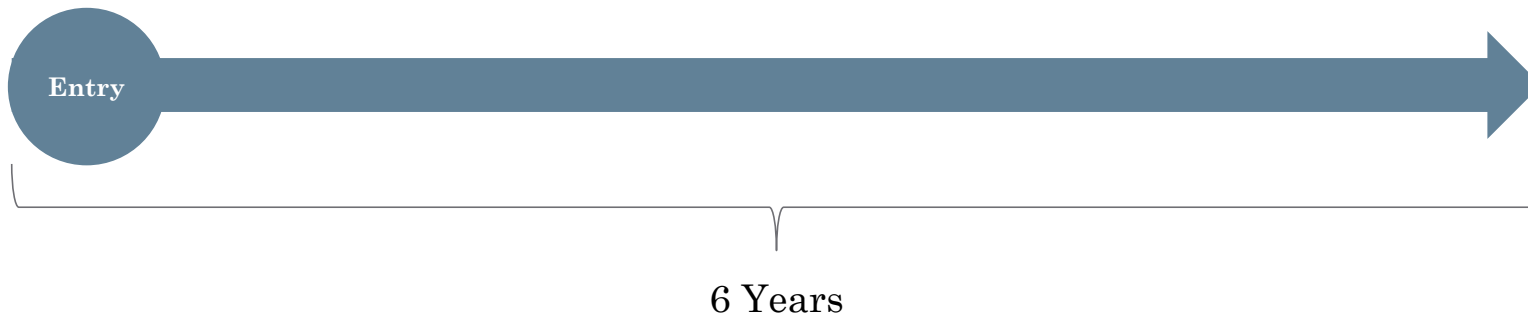
Completion Rate: Definition

Percentage of new students who complete a degree or certificate, or transfer

First-time college students earning 6+ units in first 3 years and attempting Math or English in first 3 years

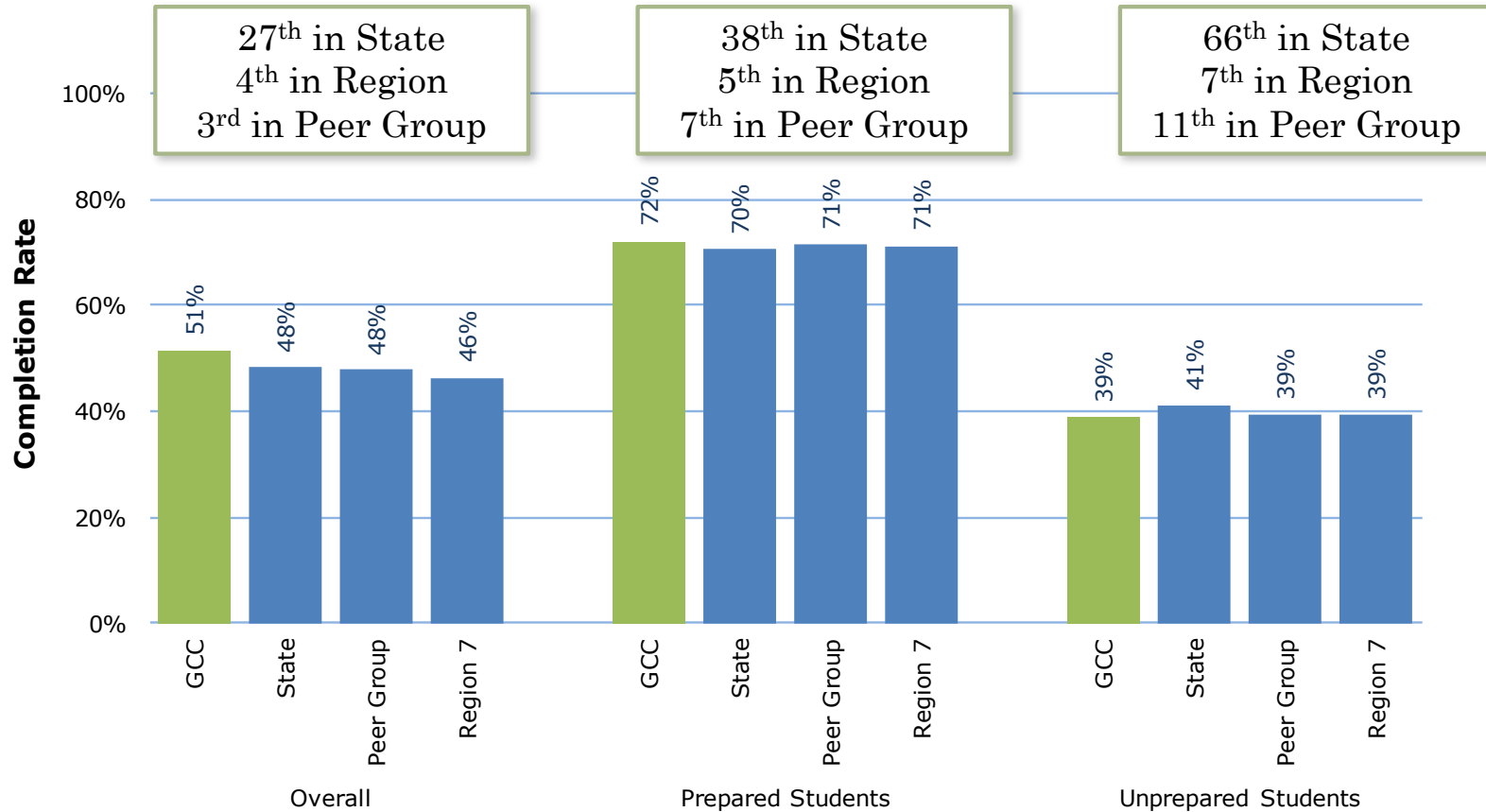
- Overall
- Prepared Students*
- Unprepared Students*

Completed degree or certificate, transferred, or became transfer prepared (60+ transferable units with GPA of 2.0+)

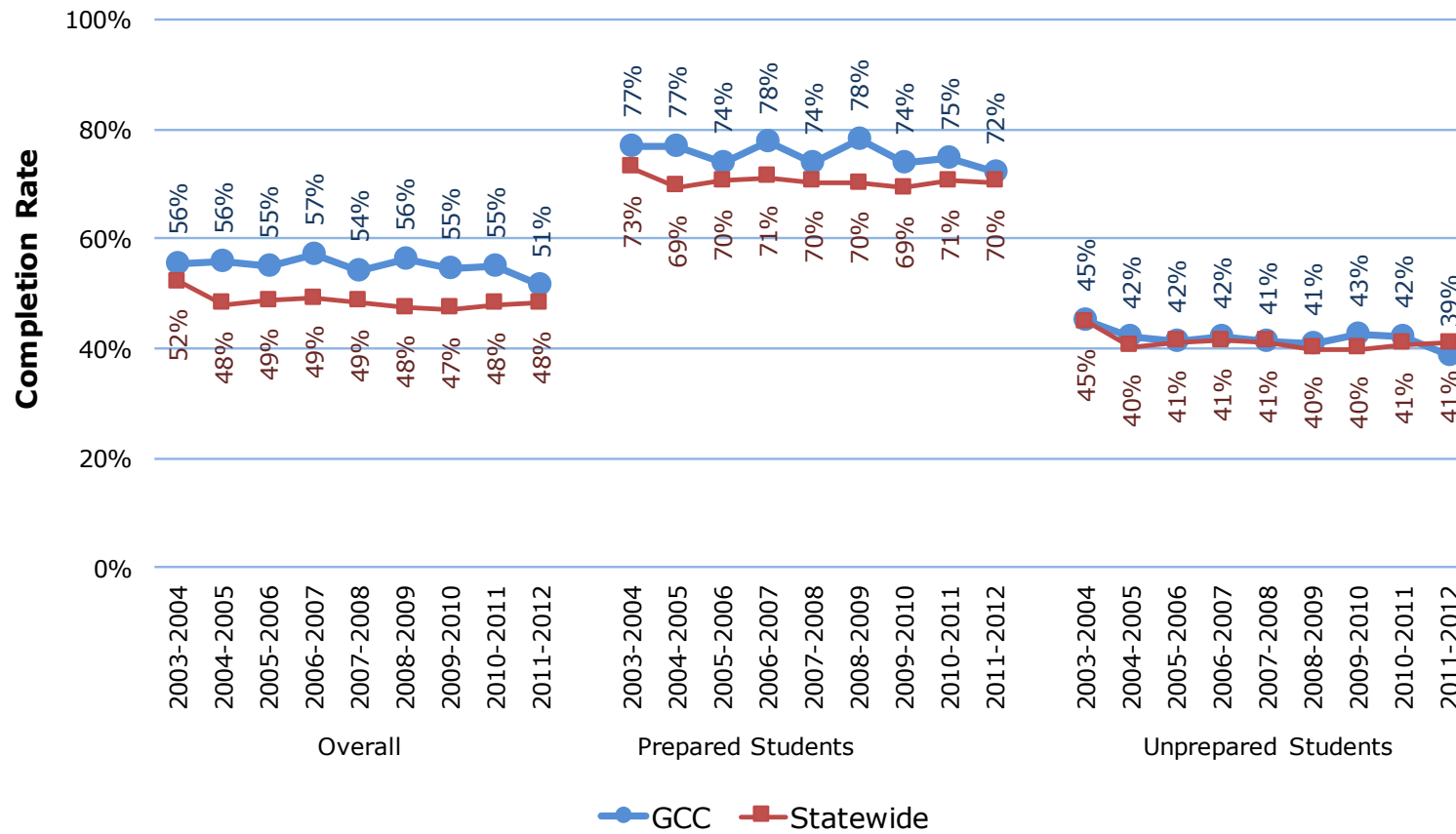


* Prepared students' first English course was transferable and first Math course was transferable or associate degree applicable.

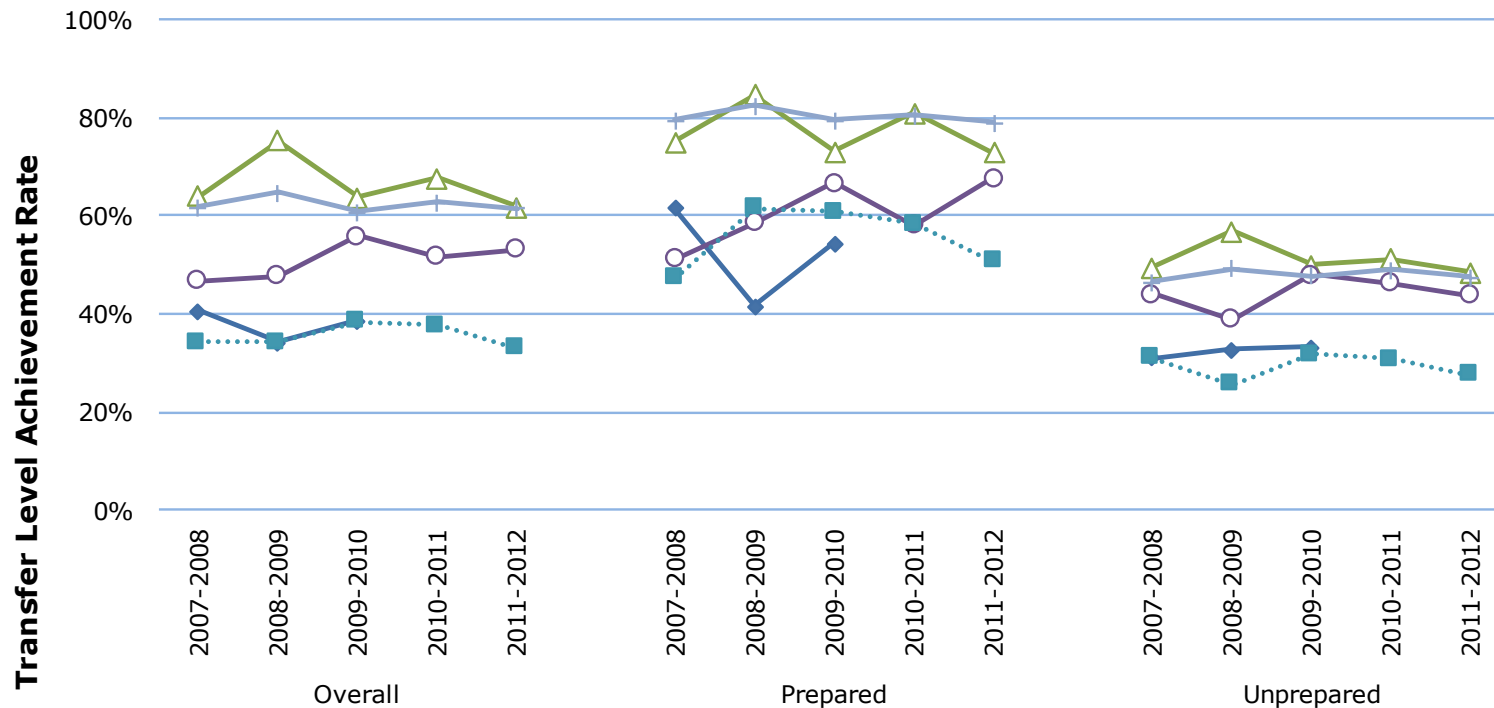
Completion Rate: 2011-12 Cohort



Completion Rate: Trends



Completion Rate: Gaps



◆ African American
 ○ Filipino
 + White

— American Indian/Alaska Native
 ■ Hispanic

▲ Asian
 — Pacific Islander

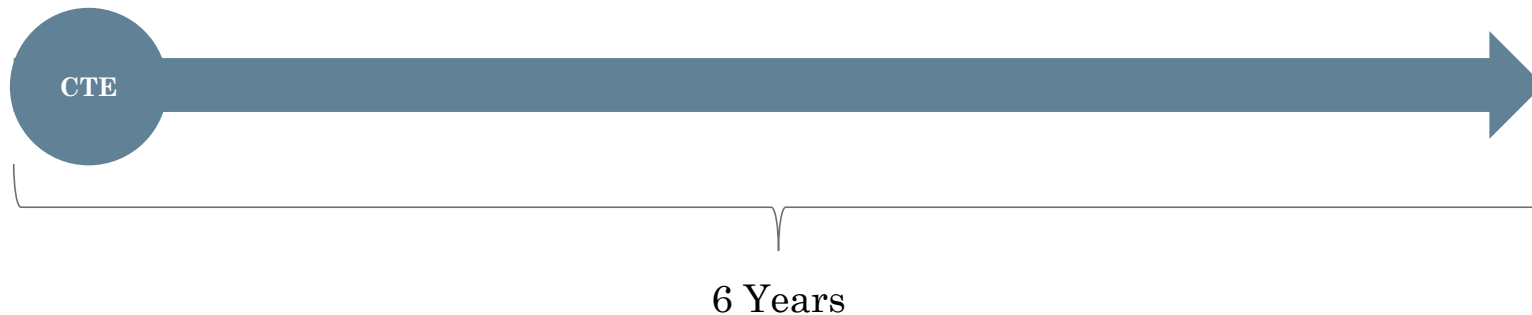
Note: Only data cells with 10 or more students are shown

CTE Rate: Definition

Percentage of CTE students who complete with a degree or certificate, or transfer

Students enrolling in a CTE course and completing 8 or more units in the same discipline within 3 years

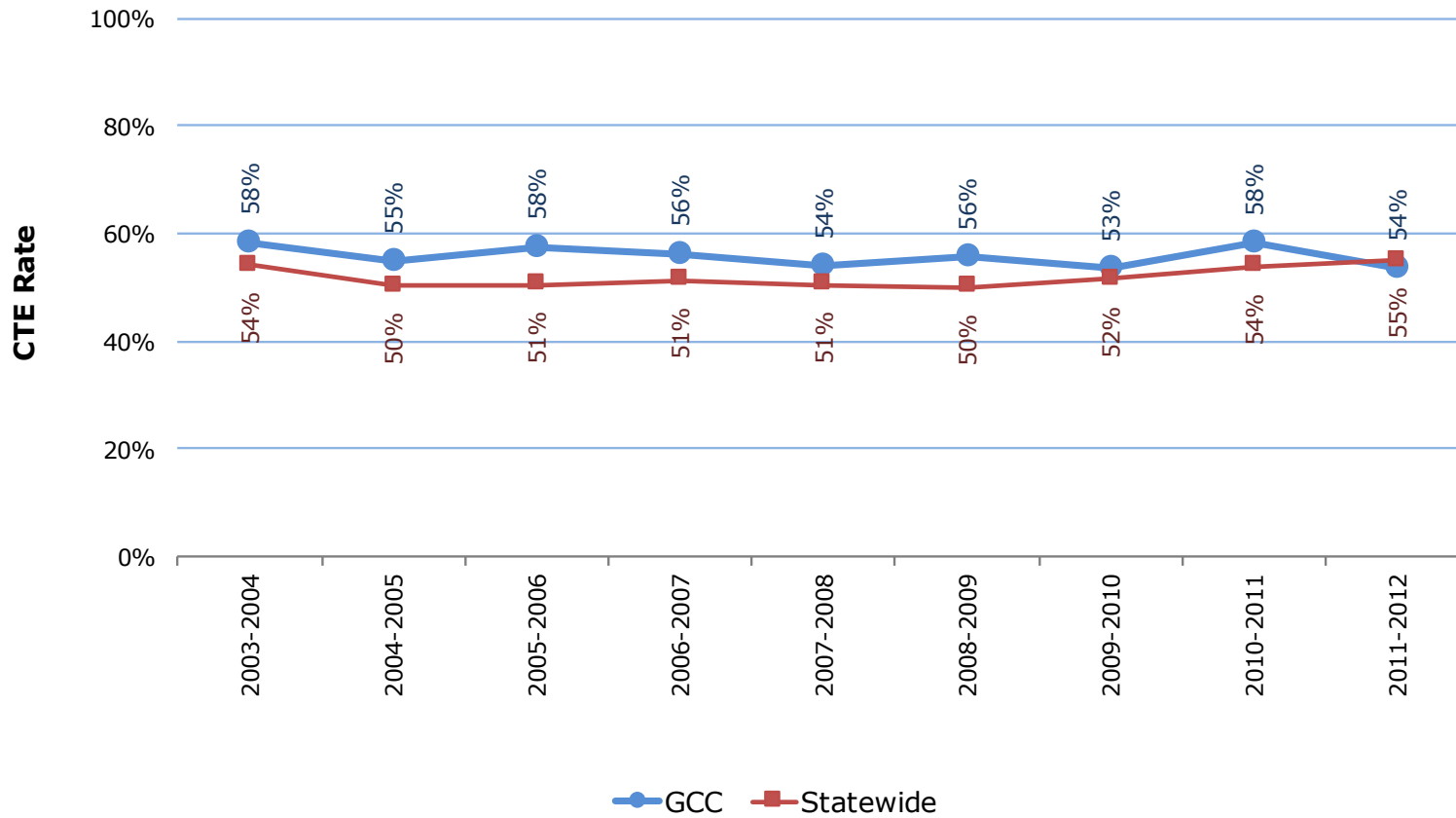
Completed degree or certificate, transferred, or became transfer prepared (60+ transferable units with GPA of 2.0+)



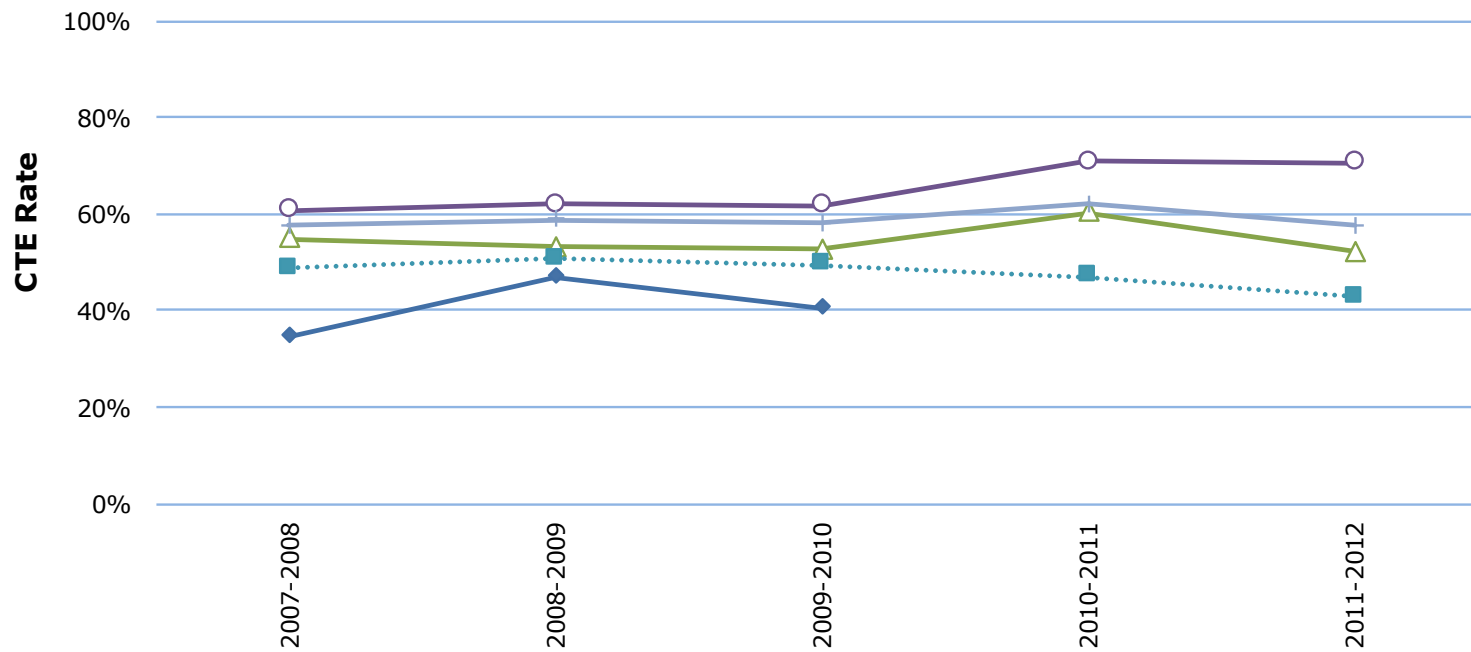
CTE Rate: 2011-12 Cohort



CTE Rate: Trends



CTE Rate: Gaps



- ◆ African American
- Filipino
- + White
- American Indian/Alaska Native
- ◆ Hispanic
- △ Asian
- Pacific Islander

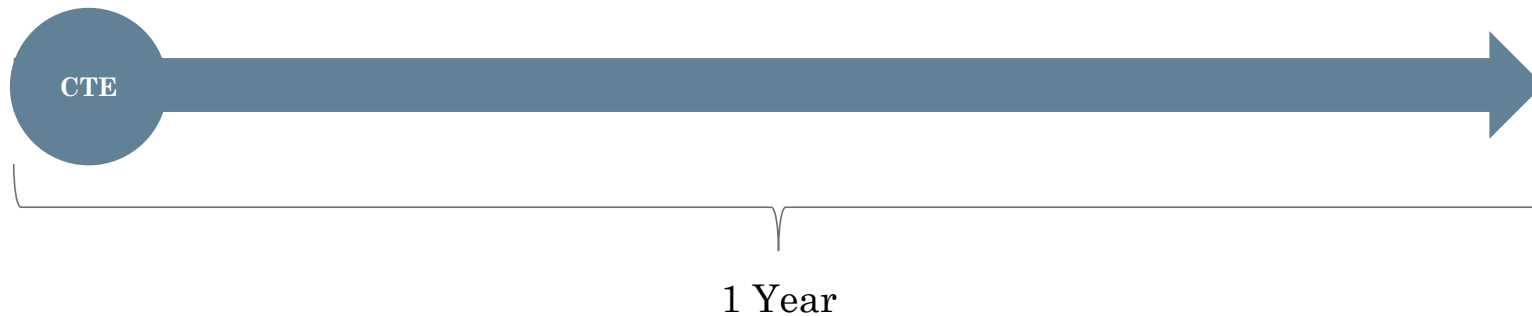
Note: Only data cells with 20 or more students are shown

Skills Builders: Definition

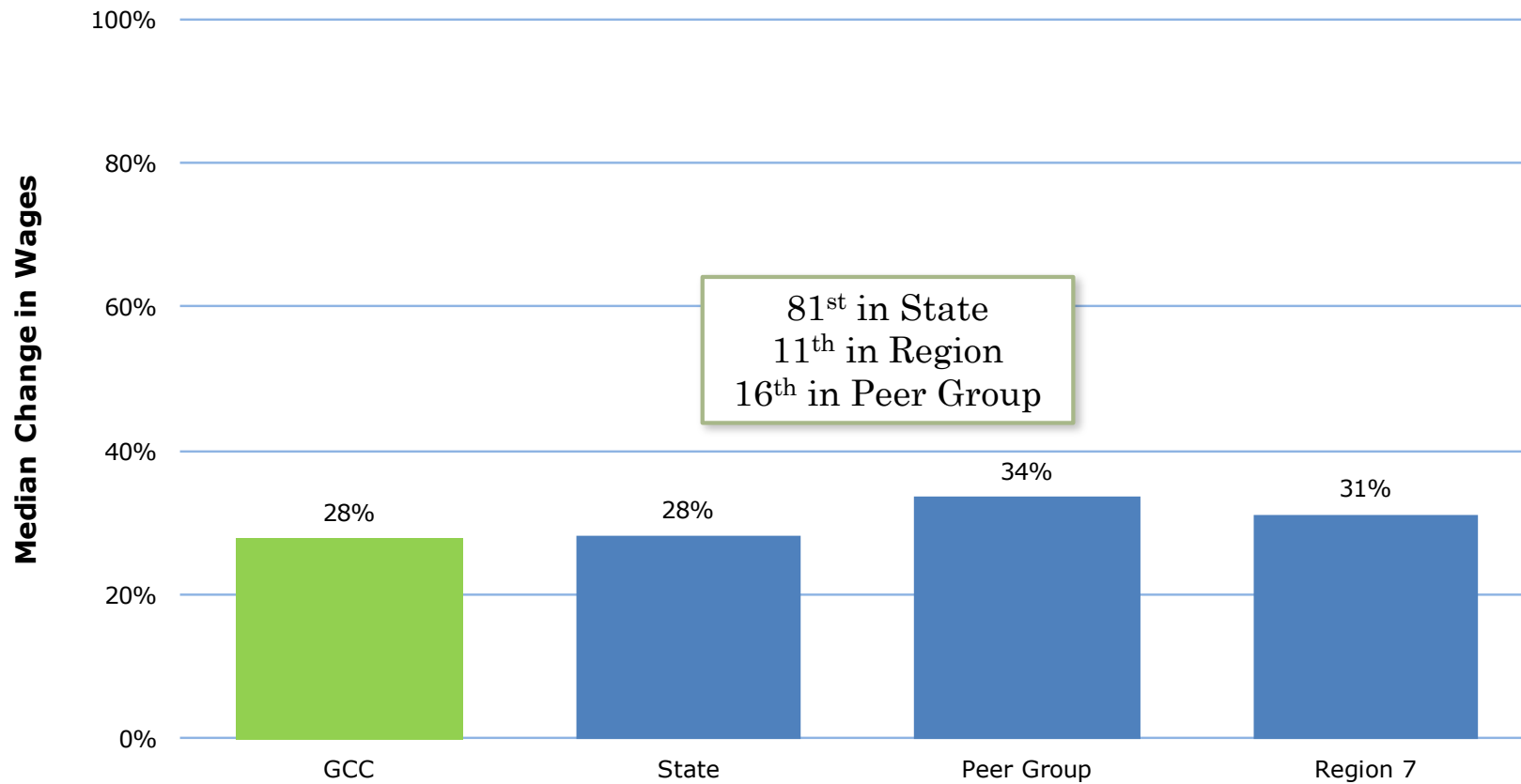
Change in wages for students completing CTE courses but not completing

Students passing higher-level CTE coursework in one academic year who did not return the following year or complete a degree or certificate or transfer

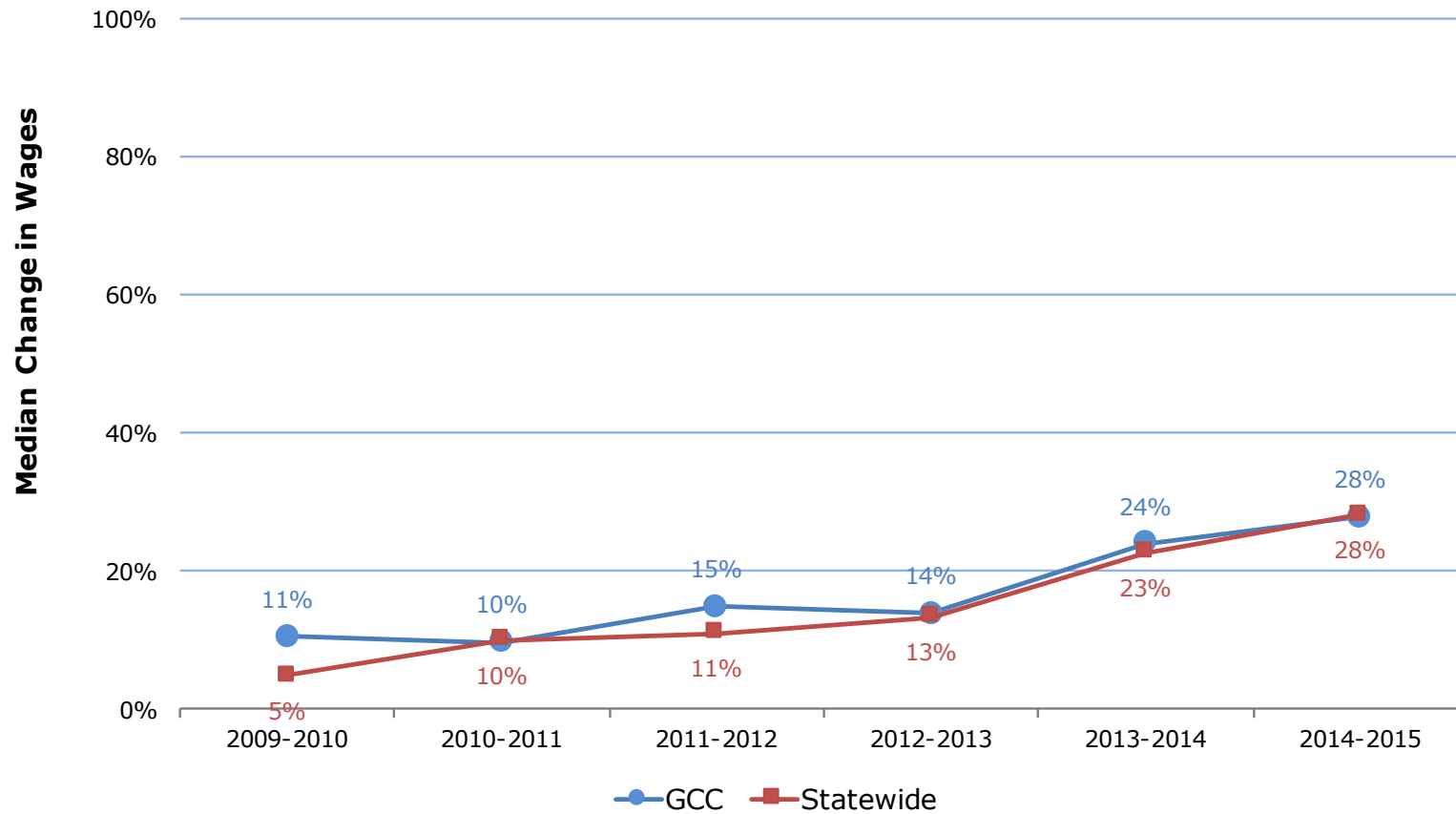
Median change in wages



Skills Builders: 2014-2015 Students



Skills Builders: Trends

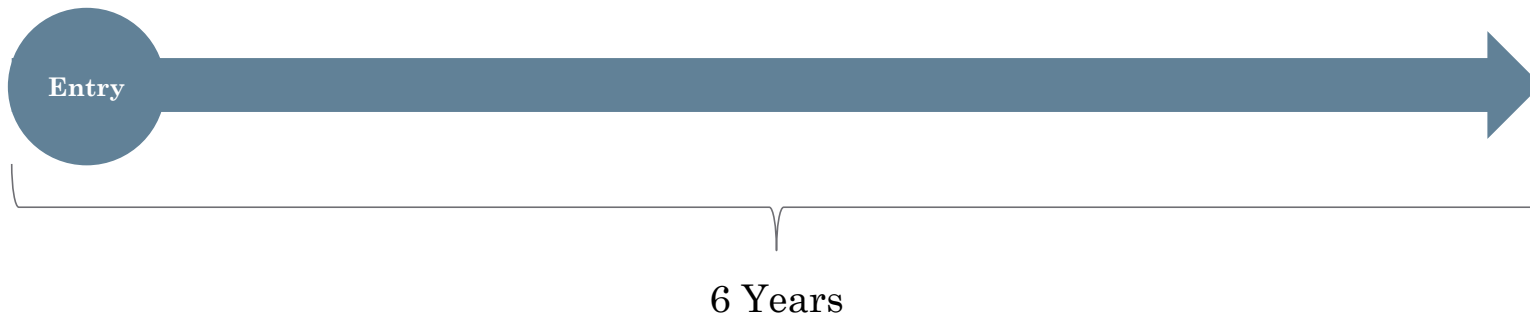


CDCP Rate: Definition

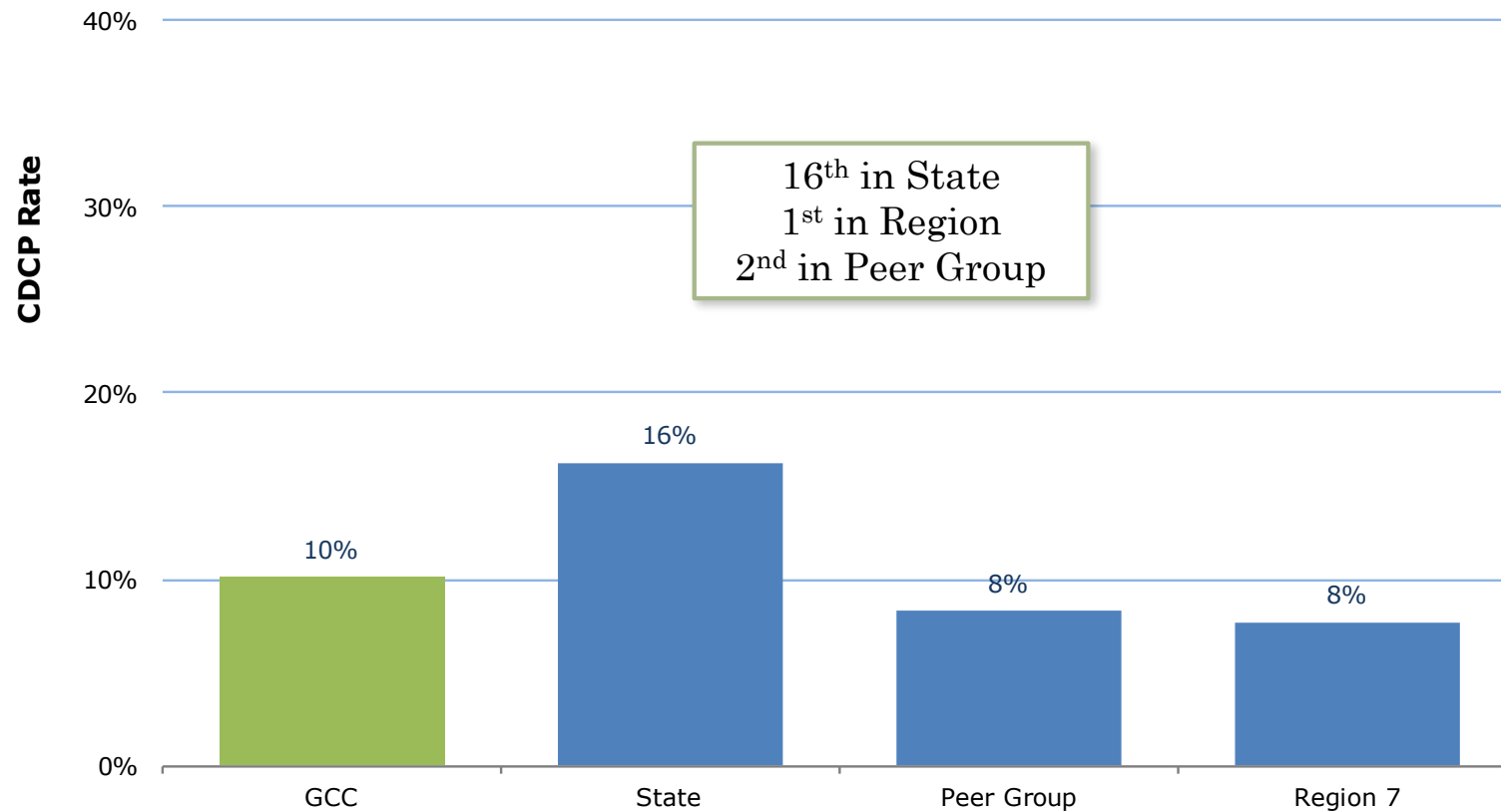
Completion of Career Development and College Preparation (CDCP) noncredit students

Students attempting 2 or more CDCP noncredit courses, completing 4 or more attendance hours in each, within 3 years

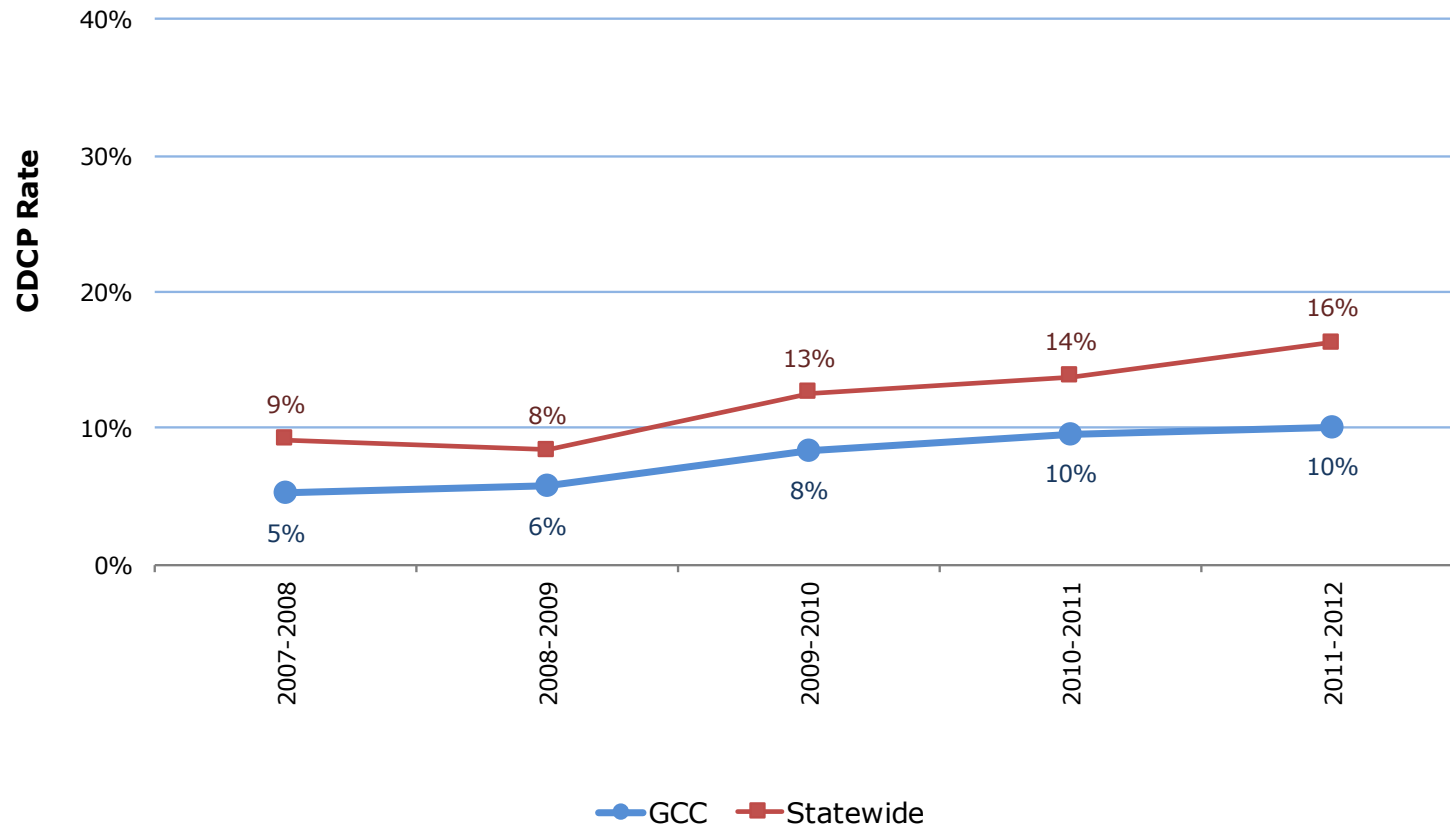
Completed a CDCP certificate, a credit degree or certificate, transferred, or became transfer prepared (60+ transferable units with GPA of 2.0+)



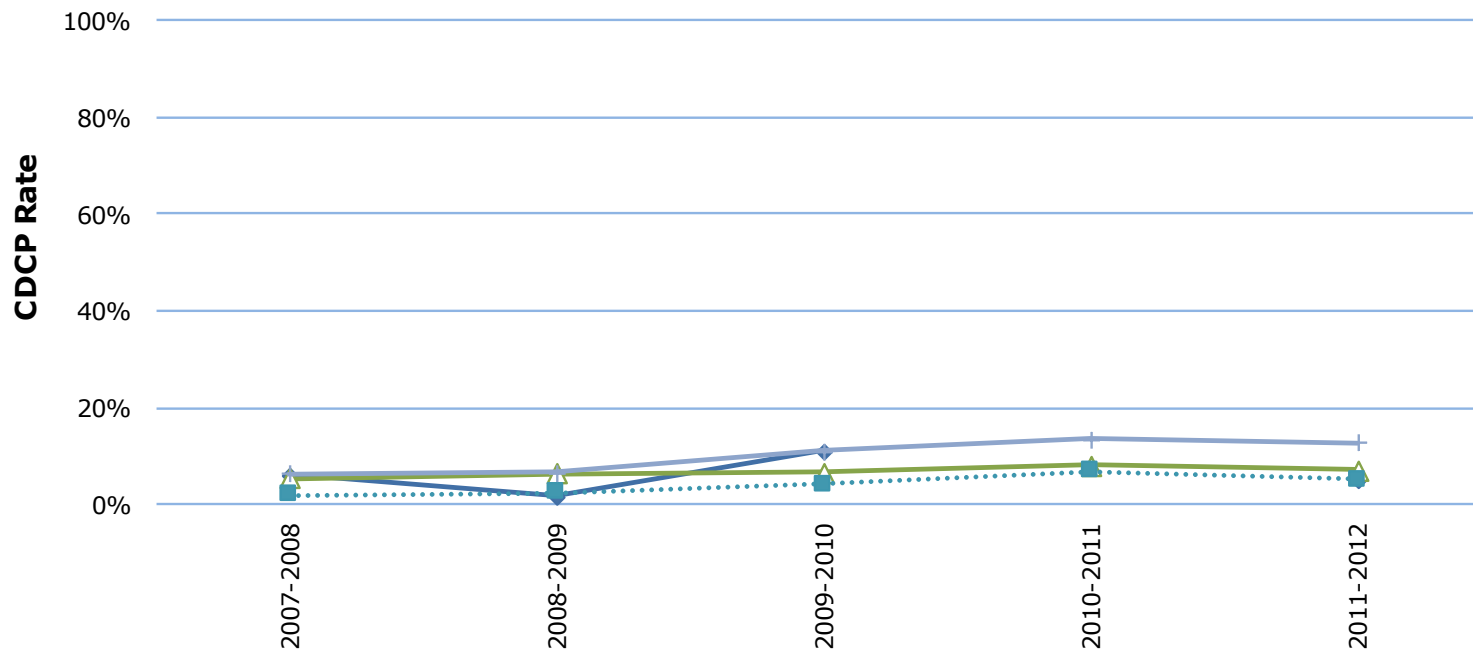
CDCP Rate: 2011-2012 Cohort



CDCP Rate: Trends



CDCP Rate: Gaps



- ◆ African American
- Filipino
- + White
- American Indian/Alaska Native
- ◆ Hispanic
- △ Asian
- Pacific Islander

Note: Only data cells with 20 or more students are shown