

PE INC. II - GRAPHIC SIGN PACKAGE  
GLENDALE COMMUNITY COLLEGE

INFORMATIONAL & REFERENCE PURPOSE ONLY



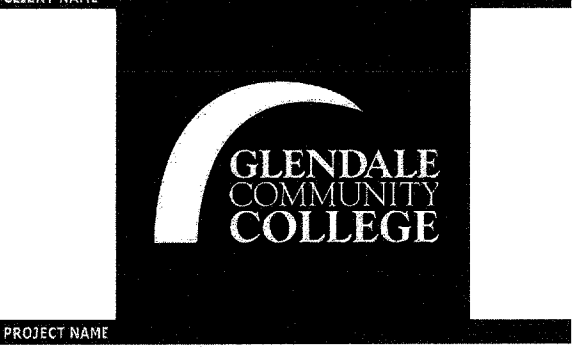
**LITTLE**  
DIVERSIFIED ARCHITECTURAL CONSULTING

1300 Dove Street, Suite # 100  
Newport Beach, CA, 92660  
T: 949.698.1400 F: 949.698.1433

www.littleonline.com

This drawing and the design herein are the property of Little Diversified Architectural Consulting. The reproduction, copying or other use of this drawing without their written consent is prohibited and any infringement will be subject to legal action.

© Little 2018



**P. E. GYM REPLACEMENT  
INCREMENT 2**  
GLENDALE COMMUNITY COLLEGE  
1500 North Verdugo  
Road  
Glendale, CA 91208

IDENTIFICATION STAMP  
DIV. OF THE STATE ARCHITECT  
OFFICE OF REGULATION SERVICES

FILE NO: 19-C2  
# 03-118553  
DATE 09212018

PROJECT TEAM  
PRINCIPAL IN CHARGE  
RC  
PROJECT MANAGER  
ST  
DRAWN BY  
SI

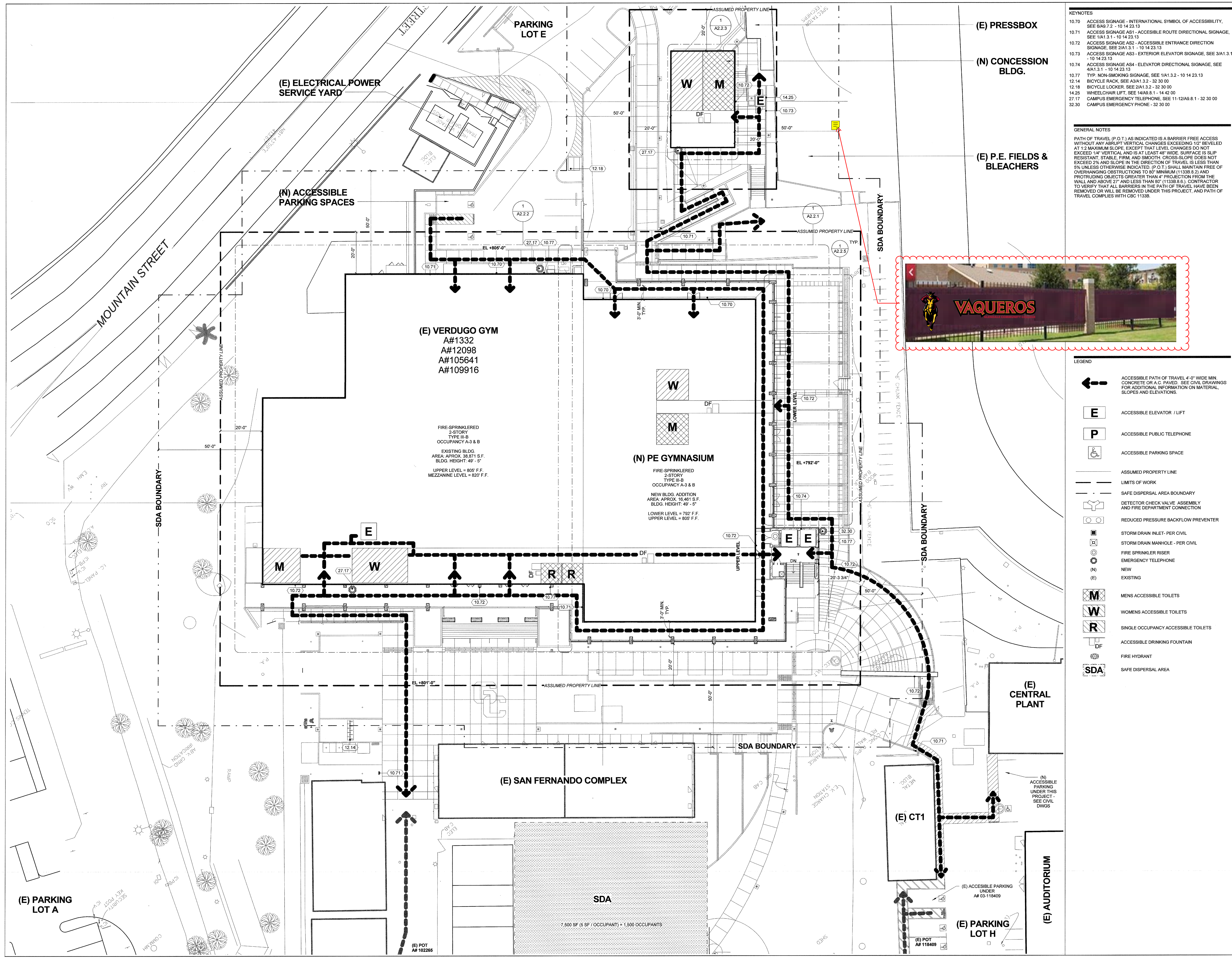
NO	REASON	DATE
1	INTAKE	02/20/2018

REGISTERED ARCHITECT  
STATE OF CALIFORNIA  
NO. C35431  
REV. 4-30-18

PROJECT TITLE  
**ACCESSIBILITY / SIGNAGE  
SITE PLAN**

613-7249-03

PROJECT NUMBER  
**A1.1.2**



**KEYNOTES**

10.70 ACCESS SIGNAGE - INTERNATIONAL SYMBOL OF ACCESSIBILITY, SEE 8/A9.7.2 - 10 14 23 13

10.71 ACCESS SIGNAGE AS1 - ACCESSIBLE ROUTE DIRECTIONAL SIGNAGE, SEE 1/A1.3.1 - 10 14 23 13

10.72 ACCESS SIGNAGE AS2 - ACCESSIBLE ENTRANCE DIRECTION SIGNAGE, SEE 2/A1.3.1 - 10 14 23 13

10.73 ACCESS SIGNAGE AS3 - EXTERIOR ELEVATOR SIGNAGE, SEE 3/A1.3.1 - 10 14 23 13

10.74 ACCESS SIGNAGE AS4 - ELEVATOR DIRECTIONAL SIGNAGE, SEE 4/A1.3.1 - 10 14 23 13

10.77 TYP. NON-SMOKING SIGNAGE, SEE 1/A1.3.2 - 10 14 23 13

12.14 BICYCLE RACK, SEE A3/A1.3.2 - 32 30 00

12.18 BICYCLE LOCKER, SEE 2/A1.3.2 - 32 30 00

14.25 WHEELCHAIR LIFT, SEE 1/A9.8.1 - 14 42 00

27.17 CAMPUS EMERGENCY TELEPHONE, SEE 11-12/A9.8.1 - 32 30 00

32.30 CAMPUS EMERGENCY PHONE - 32 30 00

**GENERAL NOTES**

PATH OF TRAVEL (P.O.T.) AS INDICATED IS A BARRIER FREE ACCESS WITHOUT ANY ABRUPT VERTICAL CHANGES EXCEEDING 1/2" BEVELED AT 1:2 MAXIMUM SLOPE, EXCEPT THAT LEVEL CHANGES DO NOT EXCEED 1/4" VERTICAL AND IS AT LEAST 48" WIDE. SURFACE IS SLIP RESISTANT, STABLE, FIRM AND SMOOTH. CROSS-SLOPE DOES NOT EXCEED 2% AND SLOPE IN THE DIRECTION OF TRAVEL IS LESS THAN 5% UNLESS OTHERWISE INDICATED. (P.O.T.) SHALL MAINTAIN FREE OF OVERHANGING OBSTRUCTIONS TO 80" MINIMUM (1133B.8.2) AND PROTRUDING OBJECTS GREATER THAN 4" PROJECTION FROM THE WALL AND ABOVE 27" AND LESS THAN 80" (1133B.6.1). CONTRACTOR TO VERIFY THAT ALL BARRIERS IN THE PATH OF TRAVEL HAVE BEEN REMOVED OR WILL BE REMOVED UNDER THIS PROJECT, AND PATH OF TRAVEL COMPLIES WITH CBC 1133B.



- LEGEND**
- ACCESSIBLE PATH OF TRAVEL 4'-0" WIDE MIN. CONCRETE OR A.C. PAVED. SEE CIVIL DRAWINGS FOR ADDITIONAL INFORMATION ON MATERIAL, SLOPES AND ELEVATIONS.
  - E** ACCESSIBLE ELEVATOR / LIFT
  - P** ACCESSIBLE PUBLIC TELEPHONE
  - ACCESSIBLE PARKING SPACE
  - ASSUMED PROPERTY LINE
  - - - LIMITS OF WORK
  - - - SAFE DISPERSAL AREA BOUNDARY
  - DETECTOR CHECK VALVE ASSEMBLY AND FIRE DEPARTMENT CONNECTION
  - REDUCED PRESSURE BACKFLOW PREVENTER
  - STORM DRAIN INLET - PER CIVIL
  - STORM DRAIN MANHOLE - PER CIVIL
  - FIRE SPRINKLER RISER
  - EMERGENCY TELEPHONE
  - (N) NEW
  - (E) EXISTING
  - M** MENS ACCESSIBLE TOILETS
  - W** WOMENS ACCESSIBLE TOILETS
  - R** SINGLE OCCUPANCY ACCESSIBLE TOILETS
  - DF** ACCESSIBLE DRINKING FOUNTAIN
  - FIRE HYDRANT
  - SDA** SAFE DISPERSAL AREA

(E) PARKING LOT A

(E) ELECTRICAL POWER SERVICE YARD

(N) ACCESSIBLE PARKING SPACES

(E) VERDUGO GYM  
A#1332  
A#12098  
A#105641  
A#109916

FIRE-SPRINKLERED  
2-STORY  
TYPE III-B  
OCCUPANCY A-3 & B  
EXISTING BLDG.  
AREA: APPROX. 38,871 S.F.  
BLDG. HEIGHT: 49' - 5"  
UPPER LEVEL = 805' F.F.  
MEZZANINE LEVEL = 820' F.F.

(N) PE GYMNASIUM

FIRE-SPRINKLERED  
2-STORY  
TYPE III-B  
OCCUPANCY A-3 & B  
NEW BLDG. ADDITION  
AREA: APPROX. 18,461 S.F.  
BLDG. HEIGHT: 49' - 5"  
LOWER LEVEL = 792' F.F.  
UPPER LEVEL = 800' F.F.

(E) SAN FERNANDO COMPLEX

SDA  
7,600 SF (6 SF / OCCUPANT) = 1,800 OCCUPANTS

(E) PRESSBOX

(N) CONCESSION BLDG.

(E) P.E. FIELDS & BLEACHERS

(E) CENTRAL PLANT

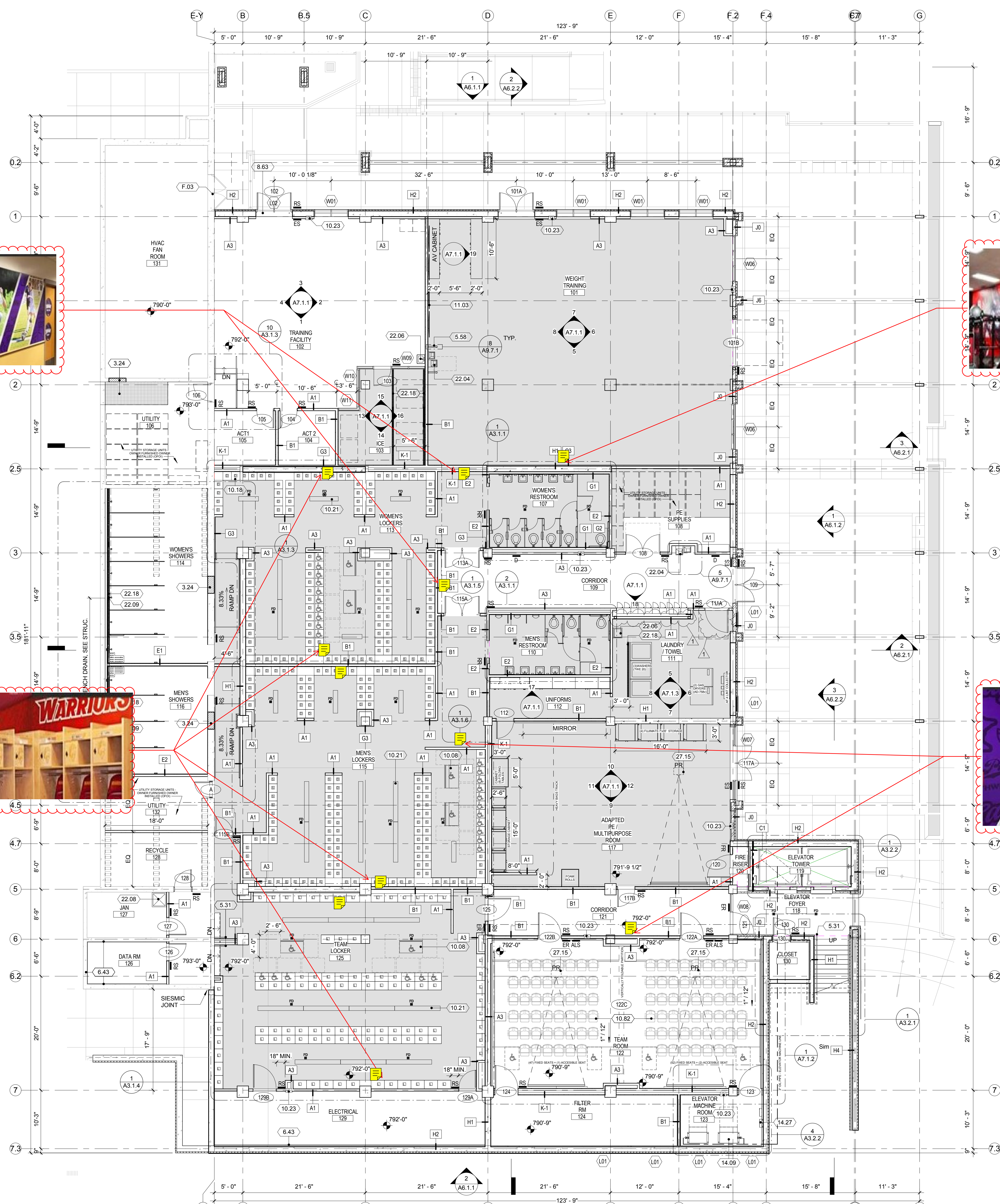
(E) CT1

(E) AUDITORIUM

(E) PARKING LOT H

(E) POT A# 102285

(E) POT A# 118409



1 LOWER LEVEL FLOOR PLAN  
1/8" = 1'-0"



- LEGEND**
- DEPRESSED SLAB PER STRUC. - COORDINATE W/ FLOORING ROOMTS.
  - WALL TYPES PER SHEET A9.1.1
  - NON-RATED PARTITION
  - 1 HOUR RATED PARTITION
  - INFILL WALL OPENING PER STRUC.
  - INFILL FLOOR DRAINS PER STRUC.
  - INFILL VOID WITH FOAM & TOPPING SLAB PER STRUCTURAL
  - FLOOR DRAIN PER PLUMBING
  - FIRE EXTINGUISHER CABINET, SEE DETAILS 1.2 & 3/A9.8.3 & FLOOR PLANS A.2.1.2, & A2.2.1.
  - PROJECTOR ABOVE 1 & 5 /A9.8.2
  - ROOM SIGNAGE, SEE 2/A9.7.2
  - EXIT SIGN, SEE 4/A9.7.2
  - EXIT ROUTE SIGNAGE, SEE 4/A9.7.2
  - ASSISTED LISTENING SYSTEM, SEE 8/A9.7.2
  - RESTROOM SIGNAGE ON WALL, SEE 3/A9.7.2
  - ASSISTIVE LISTENING SIGN, SEE 8/A9.7.2
  - SIGNAGE INDICATING "F.A.C.P. INSIDE" SEE 9/A9.7.2
  - SIGNAGE INDICATING "FIRE RISER INSIDE" SEE 9/G3.1.2
  - 18"x18" SINGLE LOCKER
  - 18"x18" DOUBLE LOCKER
  - 28"x18" SINGLE LOCKER

- GENERAL NOTES**
- LOWER FLOOR PLAN IS 792'-0"
  - DOOR FRAMES LOCATED NEAR ADJACENT WALLS OR CASEWORK TO BE 4" FROM INSIDE CORNER, U.N.O.
  - COORDINATE AND CONFIRM EXACT LOCATIONS OF ALL FLOOR MOUNTED OUTLETS PRIOR TO CONCRETE PLACEMENT, SEE ELECT.

- KEYNOTES**
- 3.24 INFILL WALL OPENING W/CONCRETE, PER STRUCTURAL - 03 30 00
  - 5.27 ARCHITECTURAL HANDRAIL, SEE 8/A1.3.1 - 05 52 13
  - 5.31 STEEL PIPE HANDRAIL, SEE 7/A1.3.1 - 05 52 13
  - 5.58 PROTECTION RAIL, TYP. SEE 8/A9.7.1 - 05 52 13
  - 6.43 PLYWOOD - 06 16 00
  - 8.63 WALL PENETRATION & CAP - 08 90 00
  - 10.08 ACCESSIBLE BENCH, SEE 8-/A9.8.1 - 10 51 26
  - 10.18 LOCKERS, SEE 1/A9.8.1 - 10 51 26
  - 10.21 BENCH TYP., SEE 8/A9.8.1 - 10 51 26
  - 10.23 FIRE EXTINGUISHER & CABINET 1-2-3/A9.8.3 - 10 44 13 & 10 44 16
  - 10.82 FLOOR MOUNTED FOLDING FIXED SEAT WITH TABLE ARM, TYP. - 12 61 00
  - 11.03 WALL MOUNTED AV EQUIPMENT SUPPORT - 11 52 00
  - 14.09 ELEVATOR EQUIPMENT PER MANUFACTURER - 14 24 00
  - 14.27 ELEVATOR CONTROLS, SEE 1/A9.9.1 - 14 24 00
  - 22.04 DRINKING FOUNTAIN PER PLUMBING, SEE 3-4/A9.7.1
  - 22.06 SINK PER PLUMBING
  - 22.08 MOP SINK, PER PLUMBING
  - 22.09 FLOOR DRAIN
  - 22.16 TRENCH DRAIN PER PLUMBING
  - 27.15 LCD PROJECTOR, SEE 8/A9.8.2 OWNER FURNISHED, CONTRACTOR INSTALLED.
  - F.03 EXISTING DOOR TO REMAIN, PAINT ONLY - 09 91 00

**ACCESSIBLE LOCKERS CALCULATIONS**

ROOM	TOTAL LOCKERS	ACCESSIBLE LOCKERS REQ. (%)	ACCESSIBLE LOCKERS PROVIDED
WOMENS LOCKER 113	200	10	10
MENS LOCKER 115	214	10.7	11
TEAM LOCKER 125	100	5	6

**KEYPLAN**

EXISTING VERDUGO GYM  
NEW GYM  
NEW ENTRANCE

NOT TO SCALE

**LITTLE**  
DIVERSIFIED ARCHITECTURAL CONSULTING

1300 Dove Street, Suite # 100  
Newport Beach, CA. 92660  
T: 949.698.1400 F: 949.698.1433  
www.littleonline.com

The drawing and the design shown are the property of Little Diversified Architectural Consulting. The reproduction, copying or other use of this drawing without their written consent is prohibited and any infringement will be subject to legal action.

© Little 2018

CLIENT NAME  
**GLENDALE COMMUNITY COLLEGE**

PROJECT NAME  
P.E. GYM REPLACEMENT INCREMENT 2  
GLENDALE COMMUNITY COLLEGE  
1500 North Verdugo Road  
Glendale, CA 91208

AGENCY REVIEW

IDENTIFICATION STAMP  
DIV. OF THE STATE ARCHITECT  
OFFICE OF REGULATION SERVICES

FILE NO: **19-C2**  
A#: **03-118553**

AC: \_\_\_\_\_ FLS: \_\_\_\_\_ SS: \_\_\_\_\_  
DATE: \_\_\_\_\_

PROJECT TEAM  
PRINCIPAL IN CHARGE  
RC  
PROJECT MANAGER  
ST  
DRAWN BY  
SI

REVISIONS

NO	REASON	DATE
1	ADDENDUM 1	03/06/2019

DATE / SIGNATURE

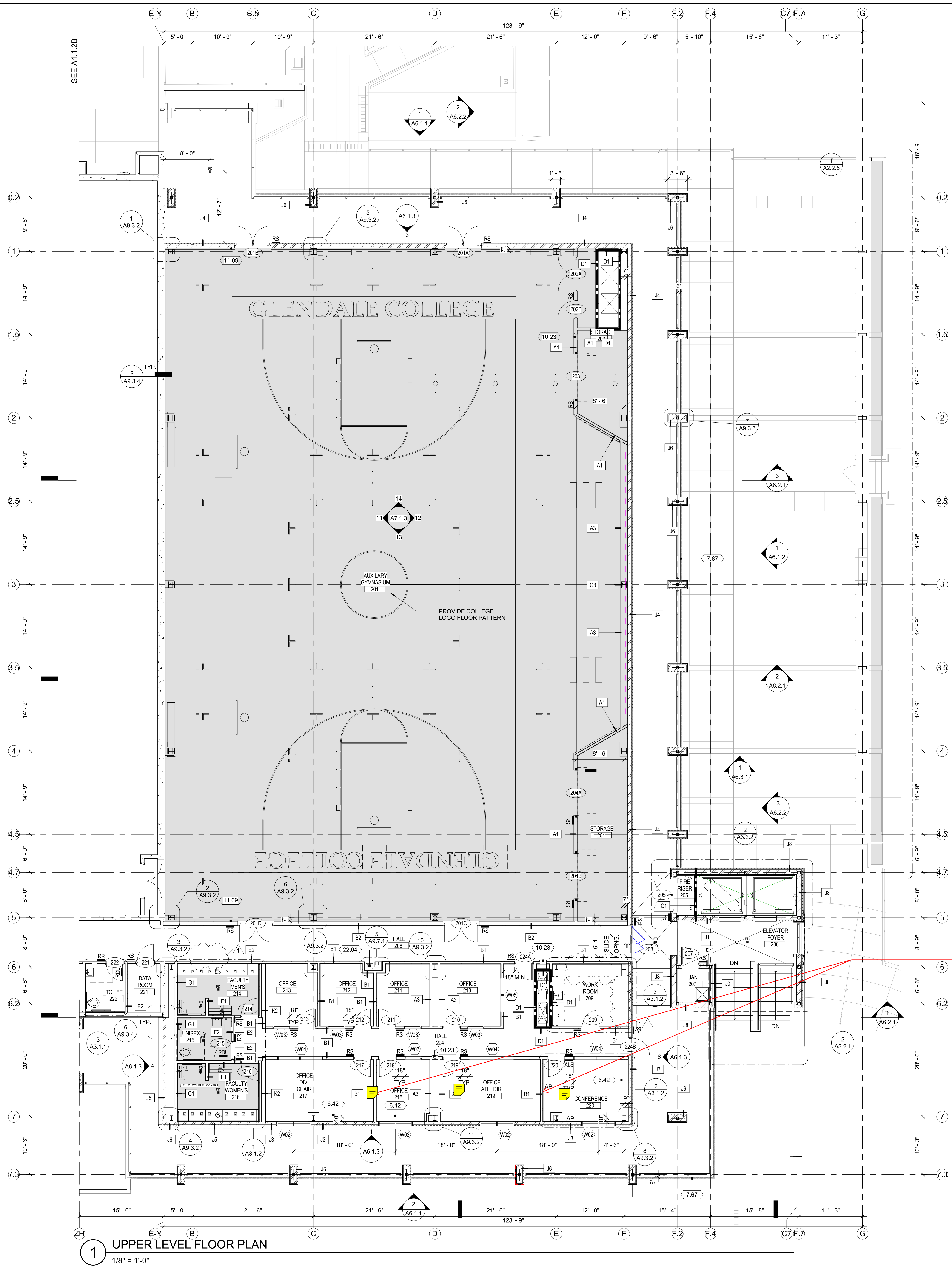
**LICENSED ARCHITECT**  
RYAN S. CARTER  
NO. C35431  
REN 4-30-19  
STATE OF CALIFORNIA

SHEET TITLE  
**FLOOR PLAN - LOWER LEVEL**

PROJECT NUMBER  
**613-7249-03**

ISSUE DATE  
3/6/19

SHEET NO.  
**A2.1.1  
AD1-A7**



1 UPPER LEVEL FLOOR PLAN  
1/8" = 1'-0"

**LEGEND**

- DEPRESSED SLAB PER STRUC. - COORDINATE W/ FLOORING RMTS.
- WALL TYPES PER SHEET A8.1.1
- NON-RATED PARTITION
- 1 HOUR RATED PARTITION
- INFILL WALL OPENING PER STRUC.
- INFILL FLOOR DRAINS PER STRUC.
- INFILL VOID WITH FOAM & TOPPING SLAB PER STRUCTURAL
- FLOOR DRAIN PER PLUMBING
- FIRE EXTINGUISHER CABINET. SEE DETAILS 1.2 & 3/A9.8.3 & FLOOR PLANS A.2.1.2 & A2.2.1
- PROJECTOR ABOVE 1 & 5/A9.8.2
- ROOM SIGNAGE. SEE 2/A9.7.2
- EXIT SIGN. SEE 4/A9.7.2
- EXIT ROUTE SIGNAGE. SEE 4/A9.7.2
- ASSISTED LISTENING SYSTEM. SEE 8/A9.7.2
- RESTROOM SIGNAGE ON WALL. SEE 3/A9.7.2
- ASSISTIVE LISTENING SIGN. SEE 8/A9.7.2
- SIGNAGE INDICATING "F.A.C.P. INSIDE" SEE 9/A9.7.2
- SIGNAGE INDICATING "FIRE RISER INSIDE" SEE 9/A3.1.2
- 18"x18" SINGLE LOCKER
- 18"x18" DOUBLE LOCKER
- 28"x18" SINGLE LOCKER

**GENERAL NOTES**

1. LOWER FLOOR PLAN IS 782'-0"
2. DOOR FRAMES LOCATED NEAR ADJACENT WALLS OR CASEWORK TO BE 4" FROM INSIDE CORNER, U.N.O.
3. COORDINATE AND CONFIRM EXACT LOCATIONS OF ALL FLOOR MOUNTED OUTLETS PRIOR TO CONCRETE PLACEMENT. SEE ELECT.

**KEYNOTES**

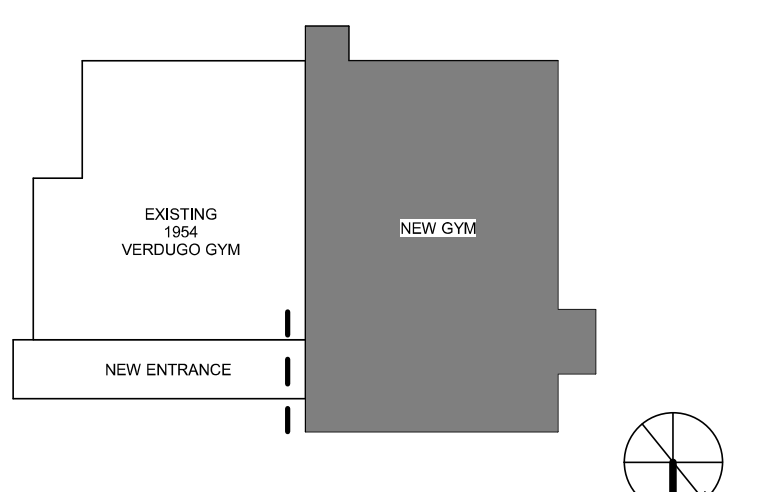
6.42	LOW PROTECTION WALL - 06 41 16
7.67	STAINLESS STEEL GUTTER - 07 71 00
10.23	FIRE EXTINGUISHER & CABINET 1-2-3/A9.8.3-10 44 13 & 10 44 16
11.09	SCOREBOARD - 11 66 43
22.04	DRINKING FOUNTAIN PER PLUMBING. SEE 3-4/A9.7.1

**ACCESSIBLE LOCKERS CALCULATIONS**

ROOM	TOTAL LOCKERS	ACCESSIBLE LOCKERS REQ. (5%)	ACCESSIBLE LOCKERS PROVIDED
FACULTY MENS 214	17	0.85	1
FACULTY WOMENS 216	17	0.85	1



**KEYPLAN**



**LITTLE**  
DIVERSIFIED ARCHITECTURAL CONSULTING

1300 Dove Street, Suite # 100  
Newport Beach, CA, 92660  
T: 949.696.1400 F: 949.698.1433  
www.littleonline.com



**P. E. GYM REPLACEMENT  
INCREMENT 2**  
GLENDALE COMMUNITY COLLEGE  
1500 North Verdugo  
Road  
Glendale, CA 91208

**IDENTIFICATION STAMP**  
DIV. OF THE STATE ARCHITECT  
OFFICE OF REGULATION SERVICES

FILE NO: **19-C2**  
AR: **03-118553**

AC: \_\_\_\_\_ FLS: \_\_\_\_\_ SS: \_\_\_\_\_  
DATE: \_\_\_\_\_

**PROJECT TEAM**

PRINCIPAL IN CHARGE: RC  
PROJECT MANAGER: ST  
DRAWN BY: SJ

NO.	REASON	DATE
1	ADDENDUM 1	03/06/2019

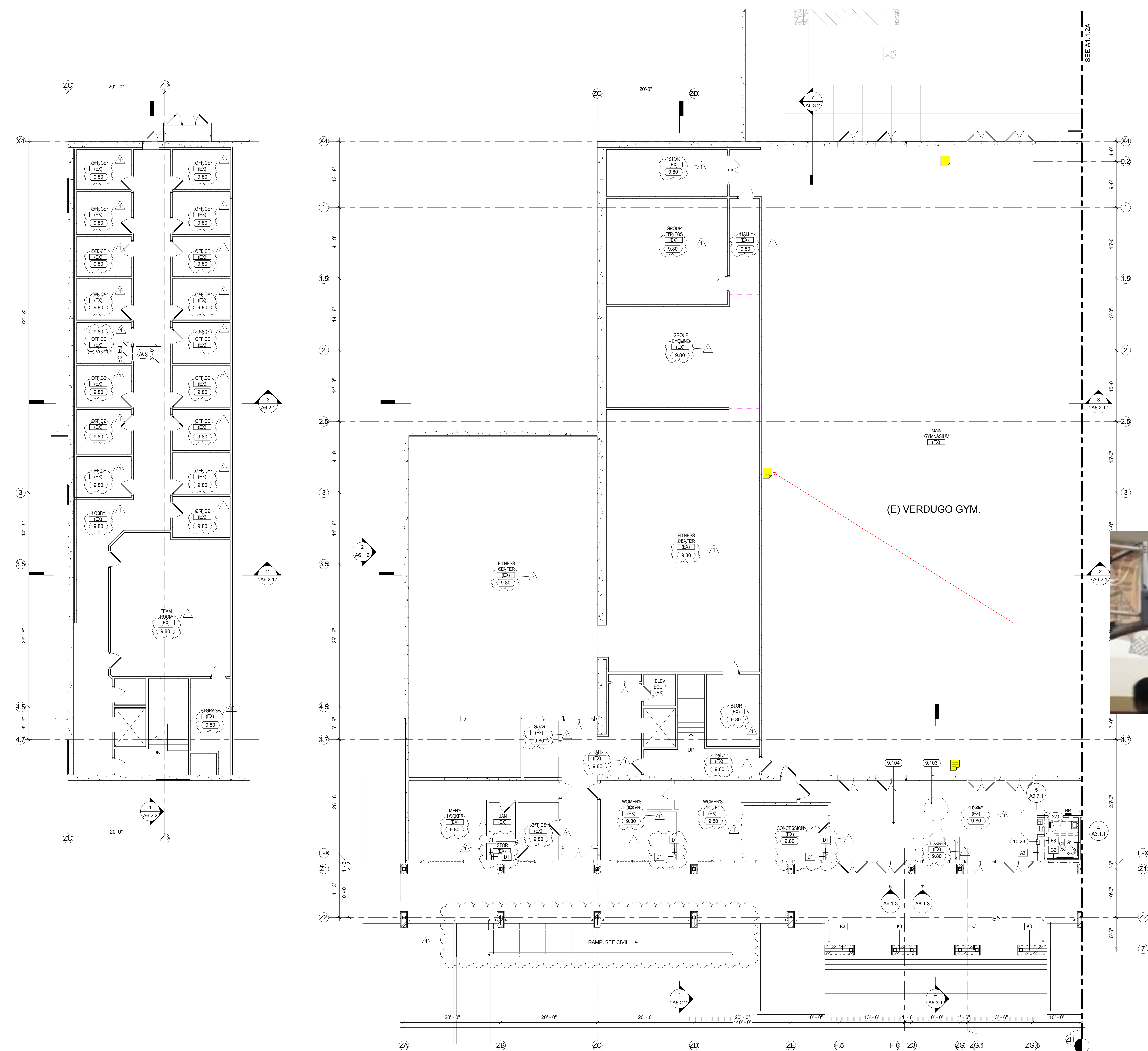


**SHEET TITLE**  
FLOOR PLAN - UPPER LEVEL

**PROJECT NUMBER**  
613-7249-03

**DATE**  
3/6/19

**SHEET NO.**  
A2.2.1  
AD1-A8



2 MEZZANINE LEVEL FLOOR PLAN  
1/8" = 1'-0"

1 UPPER LEVEL FLOOR PLAN B  
1/8" = 1'-0"

**LEGEND**

- DEPRESSED SLAB PER STRUC. - COORDINATE W/ FLOORING ROOMTS.
- WALL TYPES PER SHEET A6.1.1
- NON-RATED PARTITION
- 1 HOUR RATED PARTITION
- INFILL WALL OPENING PER STRUC.
- INFILL FLOOR DRAINS PER STRUC.
- INFILL VOID WITH FOAM & TOPPING SLAB PER STRUCTURAL
- FLOOR DRAIN PER PLUMBING
- FIRE EXTINGUISHER CABINET, SEE DETAILS 1.2 & 3/A9.8.3 & FLOOR PLANS A2.1.2, & A2.2.1
- PROJECTOR ABOVE 1 & 5 /A9.8.2
- ROOM SIGNAGE, SEE 2/A9.7.2
- EXIT SIGN, SEE 4/A9.7.2
- EXIT ROUTE SIGNAGE, SEE 4/A9.7.2
- ASSISTED LISTENING SYSTEM, SEE 8/A9.7.2
- RESTROOM SIGNAGE ON WALL, SEE 8/A9.7.2
- ASSISTIVE LISTENING SIGN, SEE 8/A9.7.2
- SIGNAGE INDICATING "F.A.C.P. INSIDE" SEE 9/A9.7.2
- SIGNAGE INDICATING "FIRE RISER INSIDE" SEE 9/G3.1.2
- 18"x18" SINGLE LOCKER
- 18"x18" DOUBLE LOCKER
- 28"x18" SINGLE LOCKER

- GENERAL NOTES**
- LOWER FLOOR PLAN IS 792'-0"
  - DOOR FRAMES LOCATED NEAR ADJACENT WALLS OR CASEWORK TO BE 4" FROM INSIDE CORNER, U.O.
  - COORDINATE AND CONFIRM EXACT LOCATIONS OF ALL FLOOR MOUNTED OUTLETS PRIOR TO CONCRETE PLACEMENT, SEE ELECT.
- KEYNOTES**
- 9.80 PAINT FINISH - INTERIOR - 09 91 00
  - 9.103 COLLEGE LOGO FLOOR PATTERN - 09 64 00
  - 9.104 NEW FLOORING IN THE (E) LOBBY PROJECT FLOOR LOGO - 09 64 00
  - 10.23 FIRE EXTINGUISHER & CABINET 1-2-3/A9.8.3-10 44 13 & 10 44 16



**IDENTIFICATION STAMP**  
DIV. OF THE STATE ARCHITECT  
OFFICE OF REGULATION SERVICES

FILE NO: **19-C2**  
AR: **03-118553**  
AC: \_\_\_\_\_ FLS: \_\_\_\_\_ SS: \_\_\_\_\_  
DATE: \_\_\_\_\_

**LITTLE**  
DIVERSE/IMP ARCHITECTURAL CONSULTING

1300 Dove Street, Suite # 100  
Newport Beach, CA. 92660  
T: 949.698.1400 F: 949.698.1433  
www.littleonline.com

The drawings and the design shown are the property of Little Diverse/IMP Architectural Consulting. The reproduction, copying or other use of this drawing without their written consent is prohibited and any infringement will be subject to legal action.

© Little 2018



**P.E. GYM REPLACEMENT INCREMENT 2**  
GLENDALE COMMUNITY COLLEGE  
1500 North Verdugo Road  
Glendale, CA 91208

**PROJECT TEAM**

PRINCIPAL IN CHARGE: RC  
PROJECT MANAGER: ST  
DRAWN BY: SI

**REVISIONS**

NO	REASON	DATE
1	ADDENDUM 1	03/06/2019

**KEYPLAN**

EXISTING VERDUGO GYM  
NEW GYM

NOT TO SCALE

**PROFESSIONAL SEAL**

LICENSED ARCHITECT  
RYAN S. CARTER  
NO. C35431  
REN 4-30-19  
STATE OF CALIFORNIA

**SHEET TITLE**  
FLOOR PLAN - UPPER LEVEL

**PROJECT NUMBER**  
613-7249-03

**ISSUE DATE**  
3/6/19

**SHEET NO.**  
A2.2.2  
AD1-A9