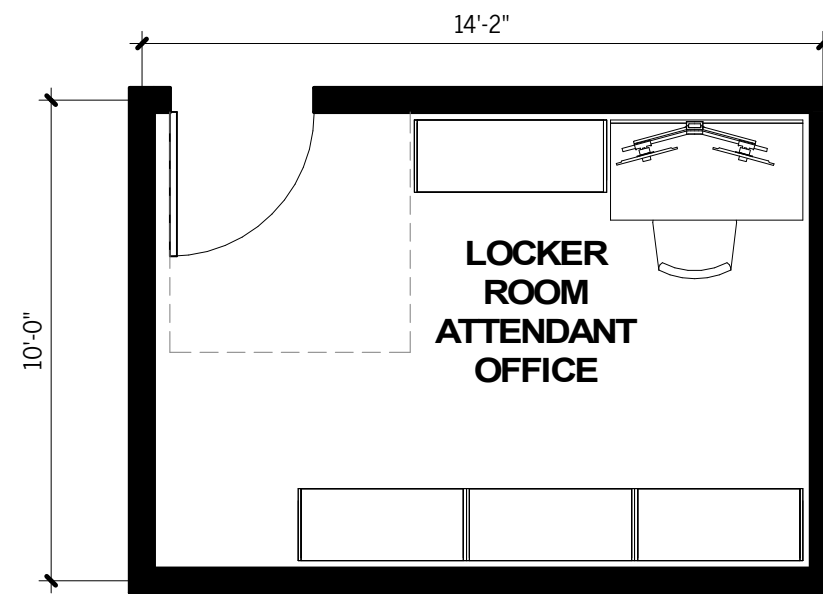


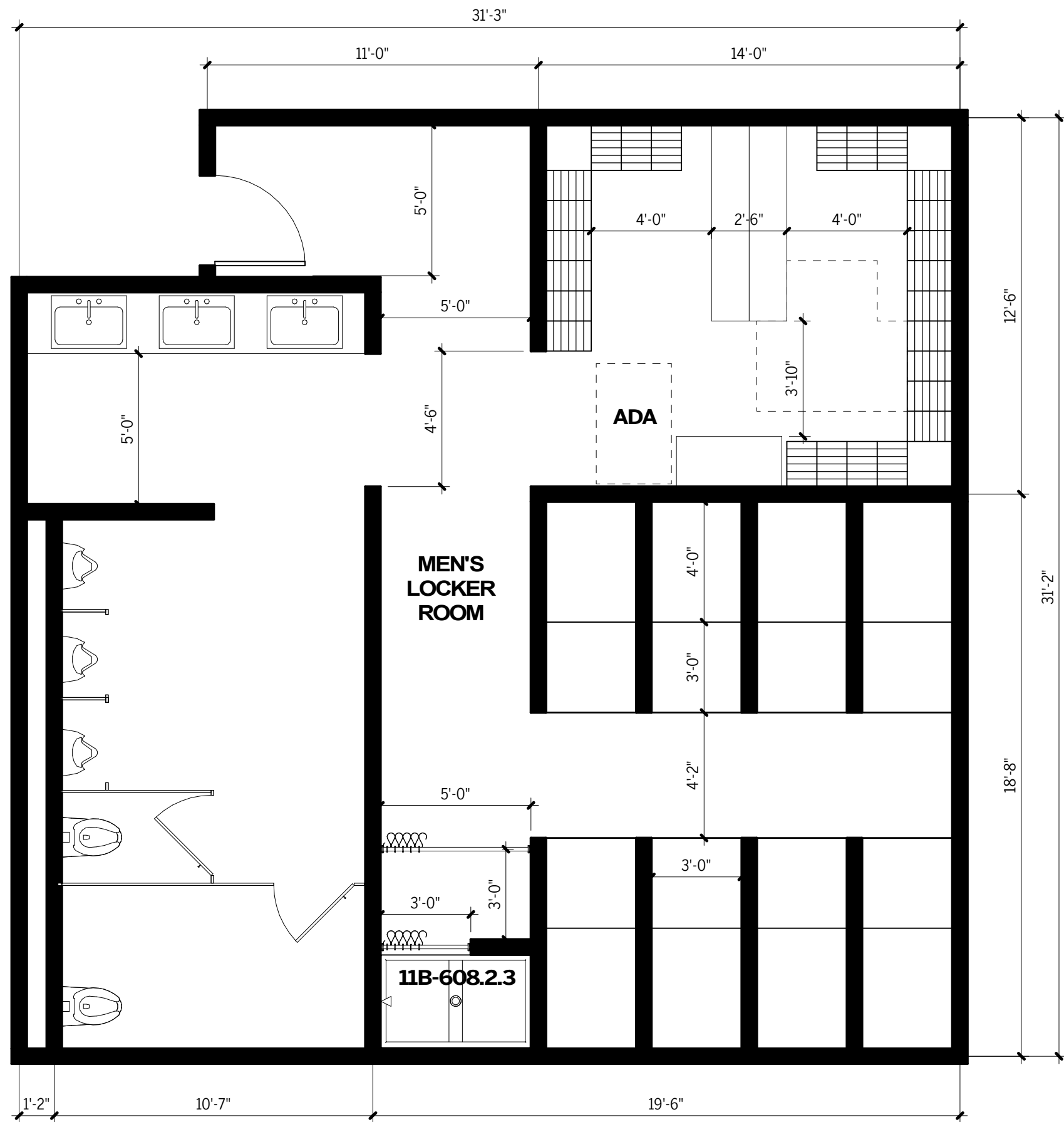
Program	Capacity	ASF	ASF/ Station	Qty	Total ASF	Comments
<b>2.00 Student PE Spaces</b>						
2.01 Men's Locker Room	150	710 ASF	~5 ASF	1	710 ASF	150 lockers @ 12x12x18, 20 of which should be ADA, 7 showers, 2 toilet stalls, 3 sinks
2.02 Women's Locker Room	150	710 ASF	~5 ASF	1	710 ASF	150 lockers @ 12x12x18, 20 of which should be ADA, 7 showers, 2 toilet stalls, 3 sinks
2.04 PE Locker Room Attendant Office	1	150 ASF	150 ASF	1	150 ASF	Proximity to locker rooms with visual control over entry. Desk space, storage for towels/feminine products.

**Student PE Spaces Subtotal 1,570 ASF**

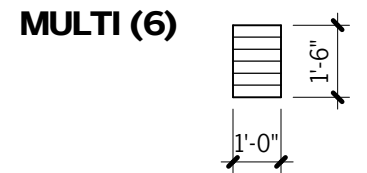
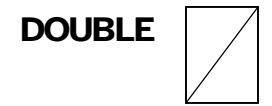
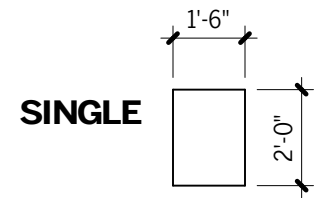
**TOTAL ASF: 1,570**

**Building GSF Total: 1,963 SF**  
 Building Efficiency Ratio: 80%



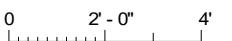


**LOCKER TYPES**

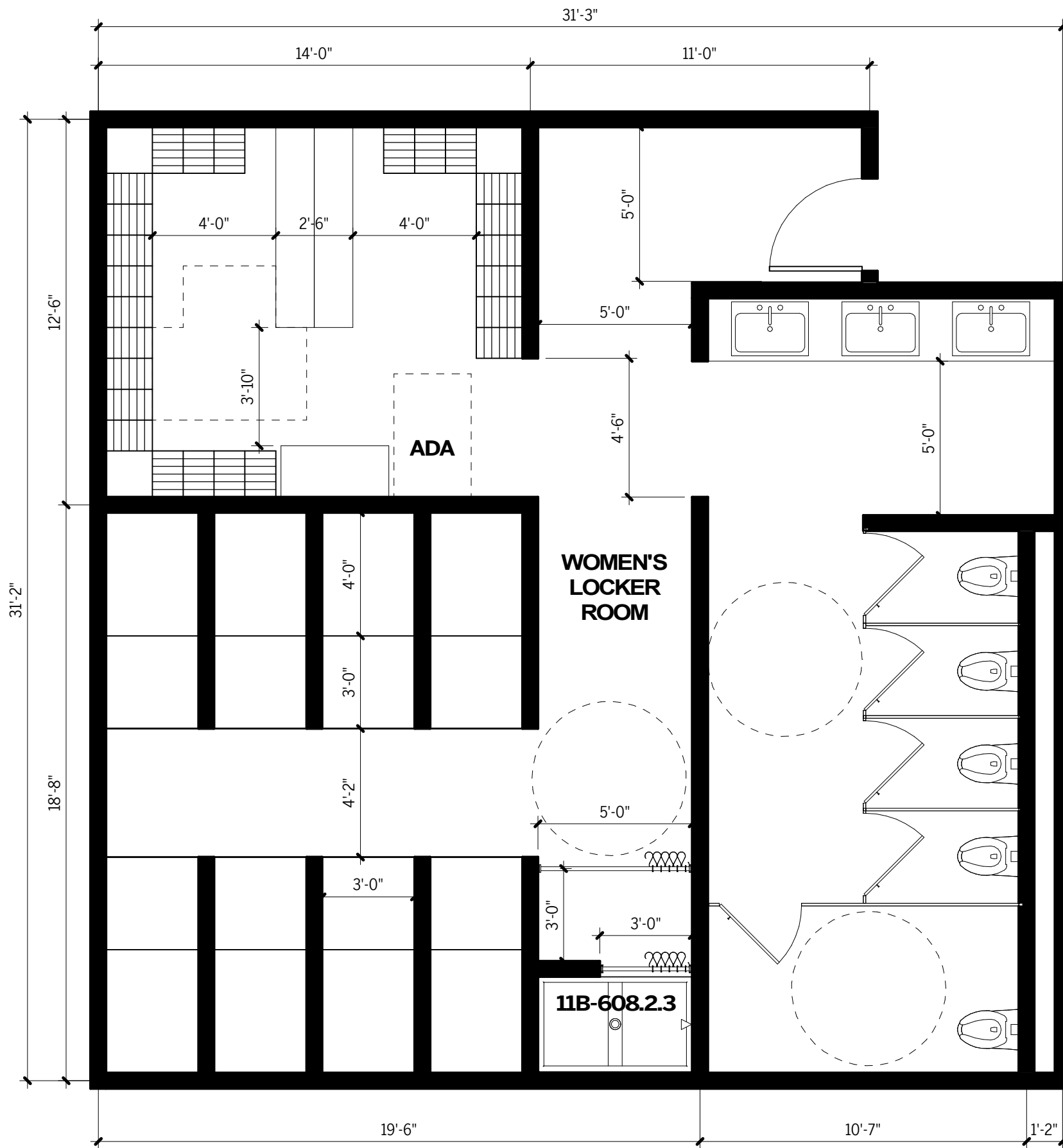
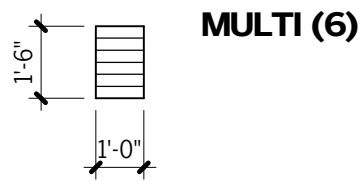
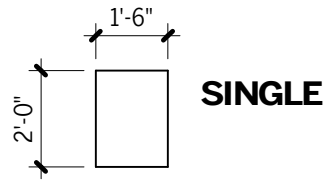


Note: room diagram does not reflect final program quantities

LOCKER ROOM MEN'S



**LOCKER TYPES**



Note: room diagram does not reflect final program quantities

LOCKER ROOM WOMEN'S

