

# READY AND ABLE: GCC in the COVID environment



Rotary Club of Glendale Sunrise  
September 25, 2020

# “our GCC” Vision



GCC aspires to be the Greater Los Angeles Region’s premier learning community where all students achieve their informed educational goals through outstanding instruction and student support services, a comprehensive community college curriculum, and unique opportunities found in few community colleges.



# Ready and Able



## Decisions made

- ▶ Remote instruction and work
- ▶ Campuses closed
- ▶ Technology access
- ▶ Emergency funds to students

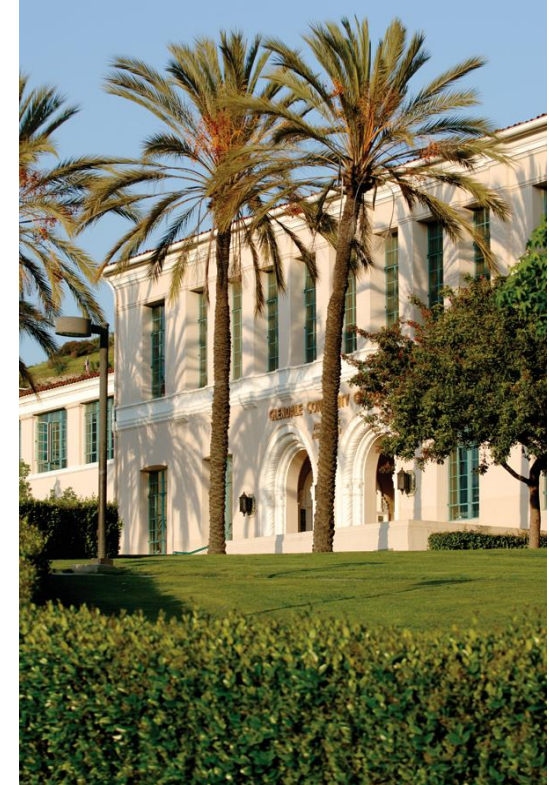


# Ready and Able

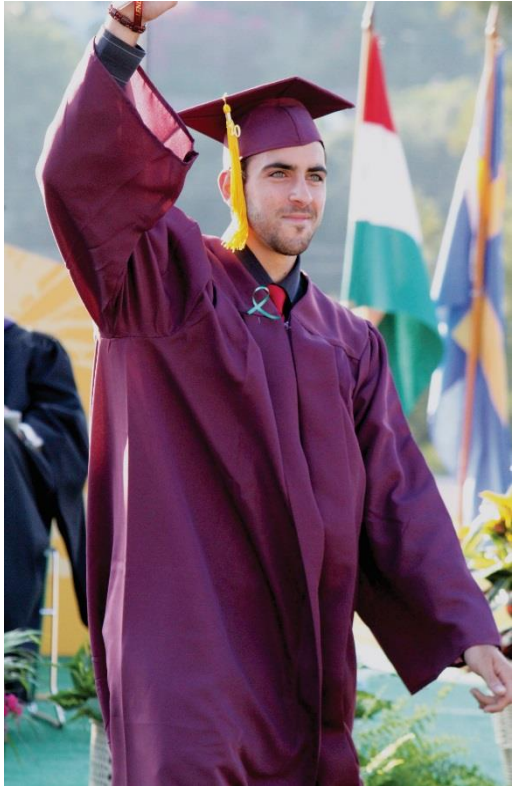


## Online Student Resources

- ▶ Textbooks
- ▶ Tutoring
- ▶ Library workshops
- ▶ Counseling
- ▶ Career services
- ▶ Health services
- ▶ Transfer center
- ▶ Student affairs
- ▶ International students
- ▶ Scholarships
- ▶ Canvas and Zoom training
- ▶ Financial Aid
- ▶ DSPS
- ▶ EOPS
- ▶ Admissions and Records

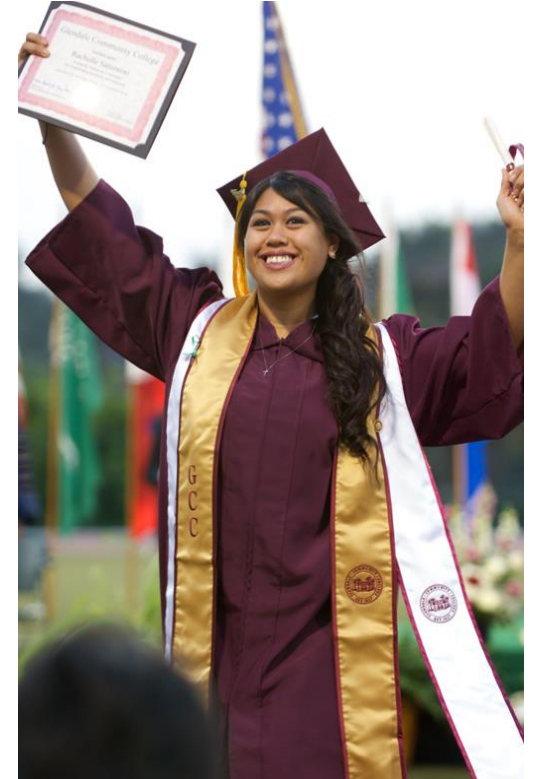


# Ready and Able



## Effect on students

- Survey
- Retention
- Course success
- Enrollment
- Basic needs



# Ready and Able



- 63% said remote instruction working well
- Retention rate dropped from 86% to 83%
- Course success rate stayed at 75%

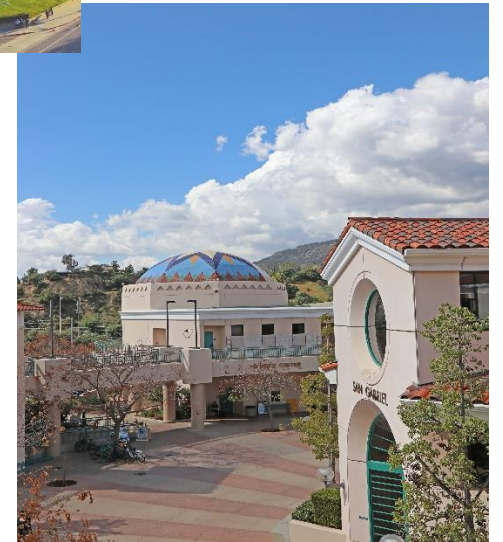
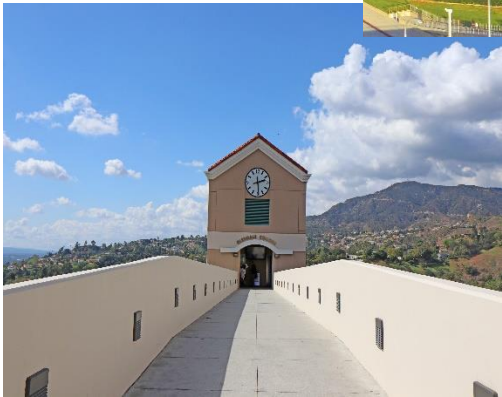


# Ready and Able



## Enrollment headcount

- ▶ Spring 2019 - 18,377 (down 1.6%)
- ▶ Fall 2019 - 18,078 (down 1.6%)
- ▶ Spring 2020 - 17,398 (down 3.8%)
- ▶ Fall 2020 – 16,500 (down about 5%)



# Ready and Able



Federal CARES Act - \$5M emergency grants for students

- Spring 2020 - 5,168 eligible students got \$625 each (\$3.2M)
- Fall 2021 – need based distribution of \$1,000 or less (\$1.8M) to approximately 2,500 students whose financial hardship threatens continuation at GCC



# Ready and Able



Effect on staff (1,115 f.t. and p.t.)

- Remote work
- Professional development
- Collective bargaining MOUs
- Evaluation



# Ready and Able



## Fiscal effect on district

- Federal CARES Act (+\$5M)
- State budget cuts (-\$3M)
- Loss of local revenue (-\$4.7M)

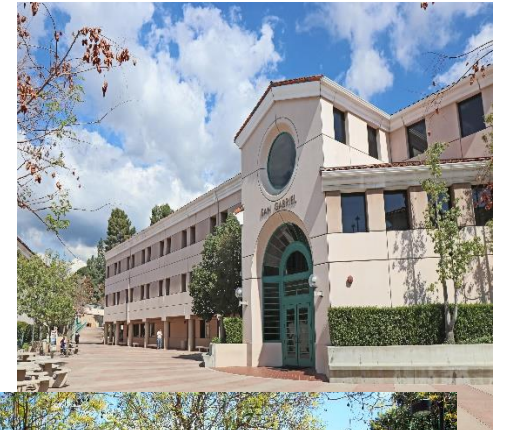


# Ready and Able



## Re-opening Requirements

1. COVID-19 prevention plan – work areas, student areas
2. Healthy hygiene practices promoted
3. Frequent cleaning, disinfection, and ventilation
4. Distancing on campus – seating at least six feet apart, limited communal spaces, food services delivery
5. Staff and student training on prevention
6. Protocols when someone becomes ill



# Ready and Able



## Board of Trustees

- Delegation to CEO
- Communication
- Oversight and accountability
- Remote public board meetings
- Developing a cohesive team remotely



# Ready and Able to Show Hope in Action



## Defining Hope

- a feeling of expectation and desire for a certain thing to happen
- someone or something that may be able to provide help

# Ready and Able to Show Hope in Action

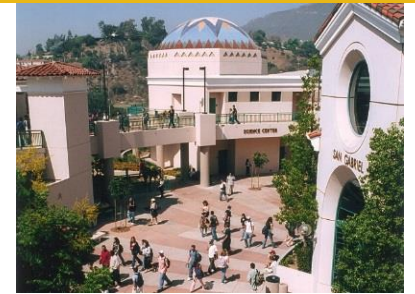


Remember our vision?

GCC aspires to be the Greater Los Angeles  
Region's premier learning community where

**ALL STUDENTS**

achieve their informed educational goals ...



# Ready and Able



Questions/comments

