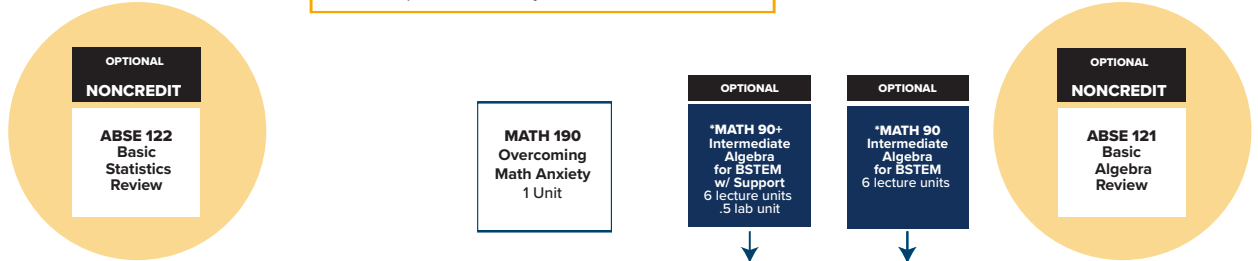
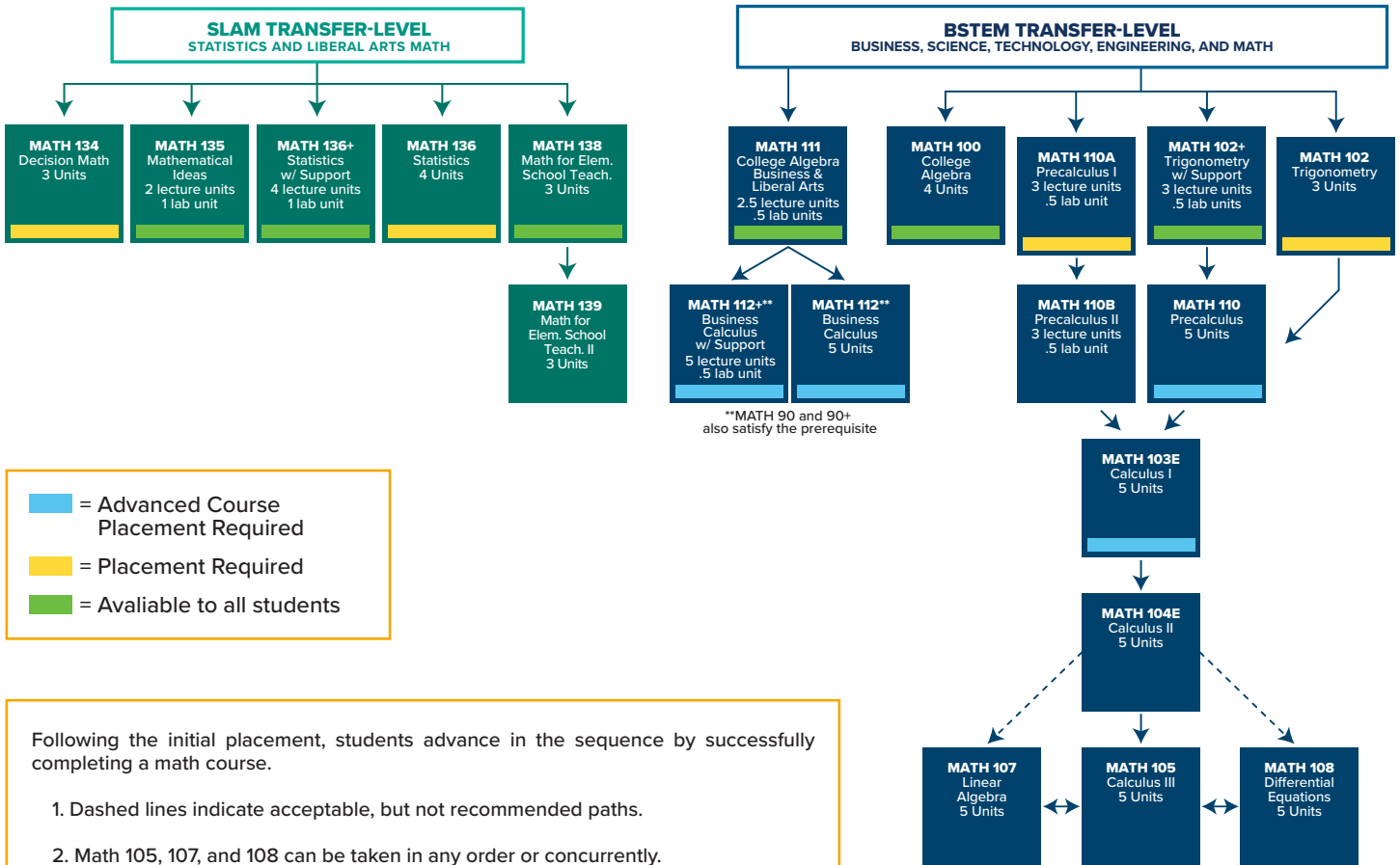


GLENDALE COMMUNITY COLLEGE MATH SEQUENCE CHART

All students who have not taken a math course at Glendale Community College or another accredited college or do not have a qualifying AP Math score should check their math placement in MyGCC.



The courses below are all transfer-level math courses. Check with your counselor to see what is required by your target four-year school for your degree program. Up-to-date UC and CSU transferability information can be found online at www.assist.org



= Advanced Course Placement Required
 = Placement Required
 = Available to all students

Following the initial placement, students advance in the sequence by successfully completing a math course.

- Dashed lines indicate acceptable, but not recommended paths.
- Math 105, 107, and 108 can be taken in any order or concurrently.
- Only two attempts are allowed in Math 110. To complete the sequence, students with two unsuccessful attempts (grade of W, D, F, or NP) will be required to take Math 110A and Math 110B.
- Math 138 and Math 139 are UC transferable with maximum credit of one course but do not satisfy IGETC.
- Math 90 and Math 90+ satisfy the pre-requisite for SLAM transfer-level courses.
- Eligible students must complete a petition process to enroll in Math 90 or Math 90+. Please see a counselor for more details.

*AA, AS Graduation Requirements
+This course contains an embedded support lab.