

CONTACT

TAMARA JOHNSON

Counselor

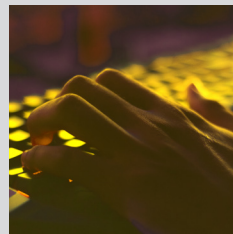
Glendale High School

(818) 242-3161 ext: 84116

TJohnson@gusd.net

If you have any questions,
please contact us at cccs@glendale.edu

For information session and
application deadline, visit glendale.edu/CCCS



glendale.edu/CCCS

WHAT IS CLOUD COMPUTING & COMPUTER SCIENCE ACADEMY?

The Cloud Computing & Computer Science Academy is designed to prepare students for computer science and cloud computing-related fields. Students will take college credit courses based on the Amazon Web Services curriculum framework in cloud computing, within their high school schedule, leading towards preparation for industry certifications and completion of related certificates.



WHY CLOUD COMPUTING & COMPUTER SCIENCE ACADEMY?

CURRICULUM

Course offerings may change

10th

Stu Dev 101, 141
CS/IS 101, 194

11th

CS/IS 112 & 151
History 102

12th

Speech 101
CS/IS 190 & 240
History 118

Courses & sequences of instruction subject to change as Career Pathways are continuously changing with recommendations from industry. For the most updated course information, please visit glendale.edu/cccs.

CONVENIENCE

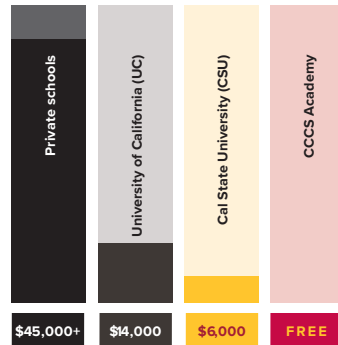
1. Opportunity to enroll in courses required for a GCC Certificate(s) and AWS Certification throughout high school education.
2. Pathway courses offered through GCC will be embedded within GHS bell schedule.
3. CCCS Students have the opportunity to earn:
 - A high school Diploma
 - A-G Certification
 - Progress towards completion of various certificates awarded by GCC
 - Up to 30 transferable college units and industry-relevant certification

**Additional coursework may be required if students also plan on completing an associate's degree by the end of the program.*

**Some private, out of state and independent colleges/ universities may not accept dual credit courses. For more information, please contact individual institutions directly.*

COST: FREE

**FREE
TUITION
BOOKS
TUTORING &
SUPPORT**



**ESTIMATED ANNUAL TUITION
(BASED ON FULL-TIME ATTENDANCE)**