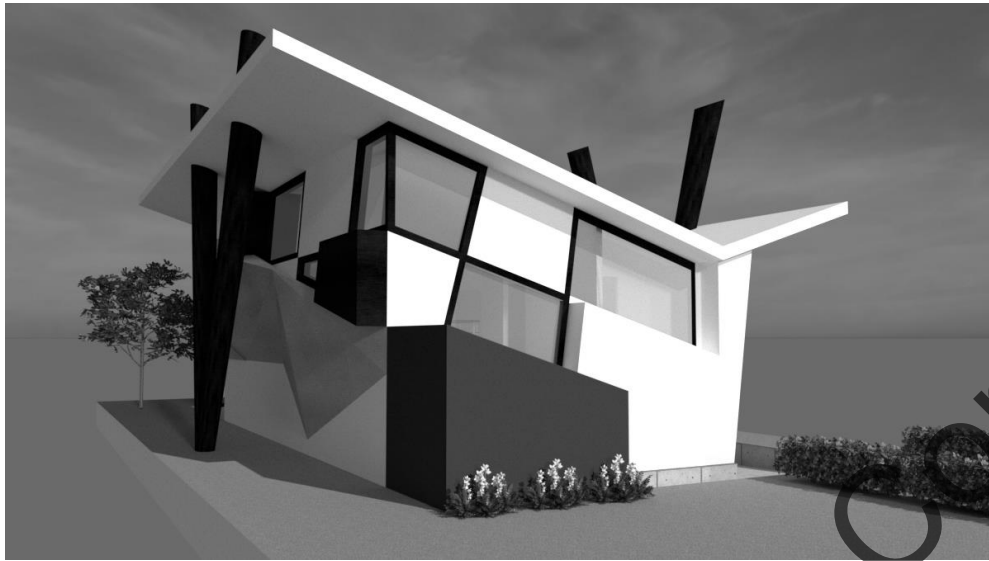




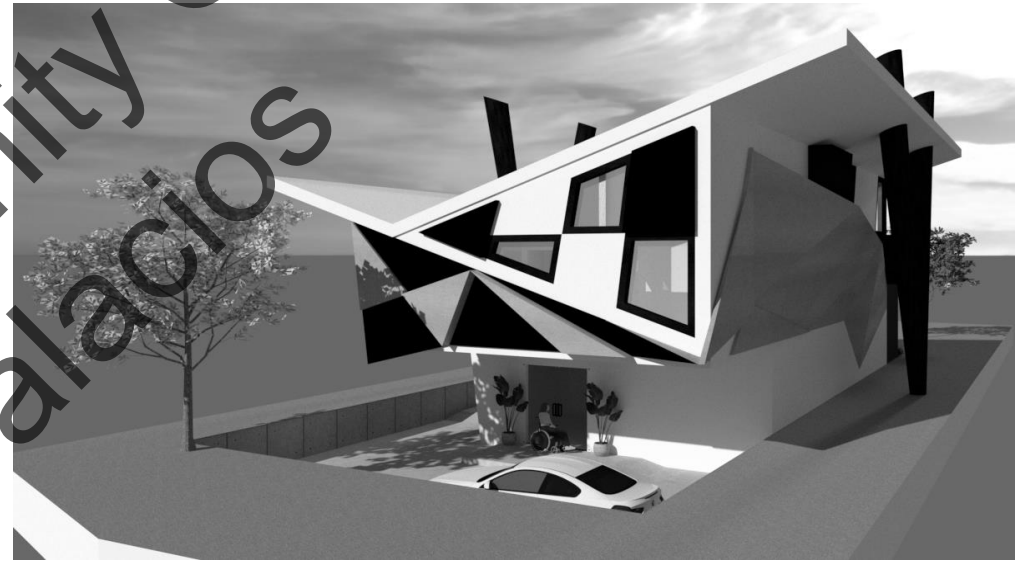
Nicole Palacios
Architecture Portfolio
2021-2022

Table of Contents

- 4 **ARCH I20 Residential Architectural Design I – “House for a Paralympic Athlete”**
First Year Design Studio
Glendale Community College, Fall 2021
Instructor: Professor Paul Chiu
Individual Project
- 20 **ARCH I25 Residential Architectural Design II – “Senior Mix-Used Housing”**
First Year Design Studio
Glendale Community College, Winter 2022
Instructor: Professor Paul Chiu
Individual Project
- 34 **ARCH I30 Commercial Architectural Design I – “New Little Tokyo”**
Second Year Design Studio
Glendale Community College, Fall 2022
Instructor: Professor Paul Chiu
Individual Project



View of the Exterior Front

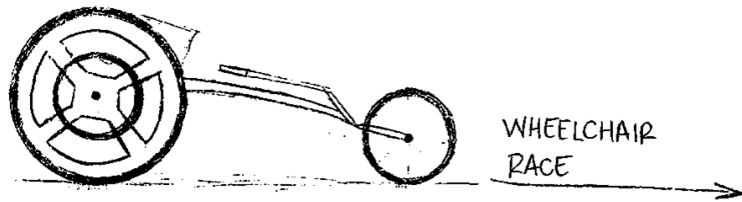


View of the Exterior Back

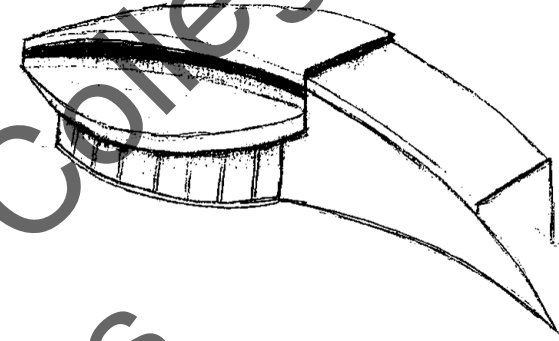
ARCH 120 Residential Architectural Design I – “House for a Paralympic Athlete”
 First Year Design Studio
 Glendale Community College, Fall 2021
 Instructor: Professor Paul Chiu
 Individual Project

The house was designed especially for Paralympic athlete Tatyana McFadden, whose primary means of mobility is a wheelchair, so the house is designed with a system of ramps from the main entrance to the basement.

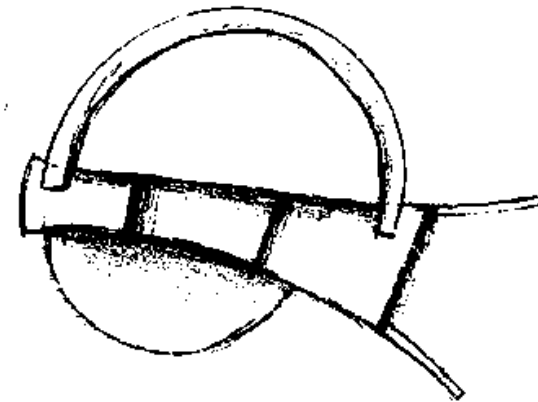
The design concept was based on the shape, colors and materials of the wheelchair she uses in the Paralympics. It includes 3 bedrooms, one of them the master bedroom, 3 bathrooms, kitchen with breakfast area and pantry, living room, guest bathroom, an office and basement.

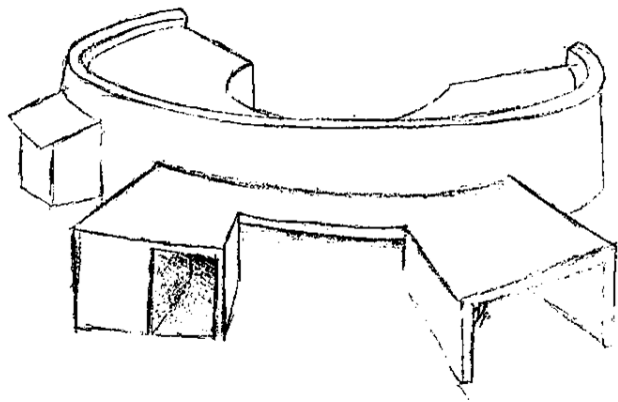


The initial concept for the design was inspired by the wheels of the Paralympian's wheelchair, and the goal was to incorporate various sizes of circles and semicircles to create a sense of dynamic movement. The challenge was to find a way to seamlessly blend the various circular shapes into the design while maintaining a cohesive overall look.



IDEA #1

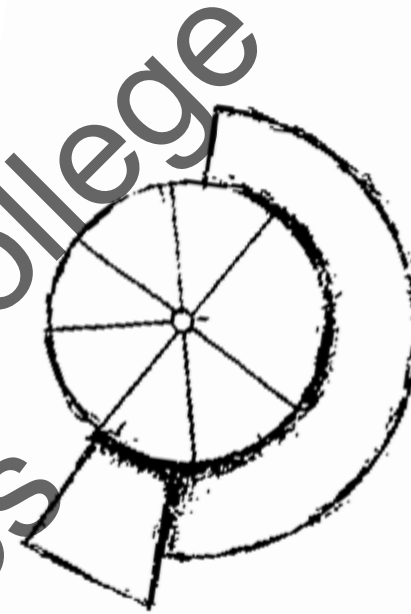




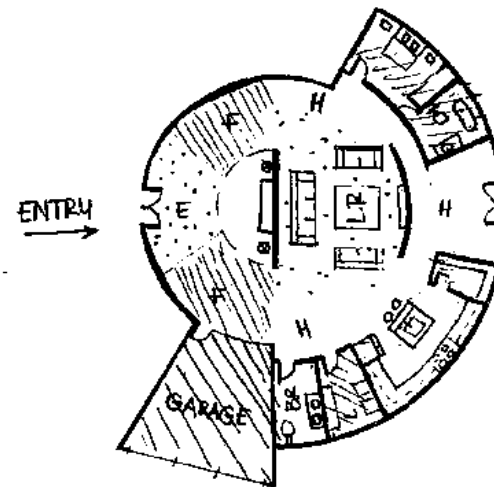
IDEA #2.

The second design idea was also derived from the wheel, but I went a step further by experimenting with a series of shapes and volumes that transcended traditional circular forms. The fluidity that I was looking for from the beginning I adapted it to the level of the architectural plan in the circulation of the house.

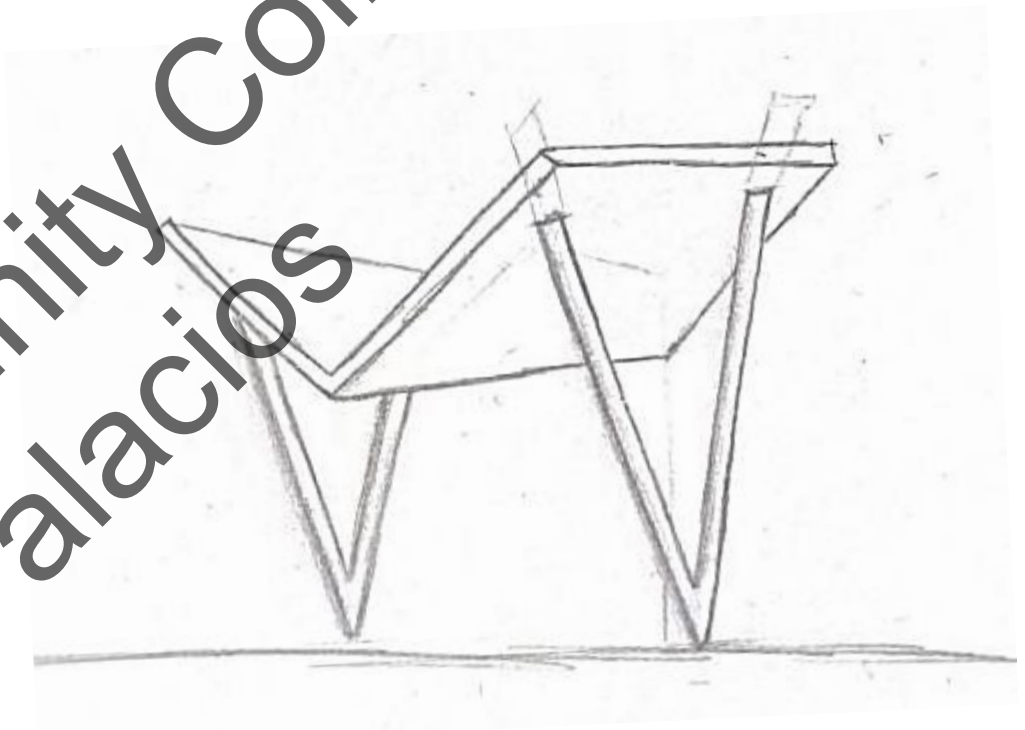
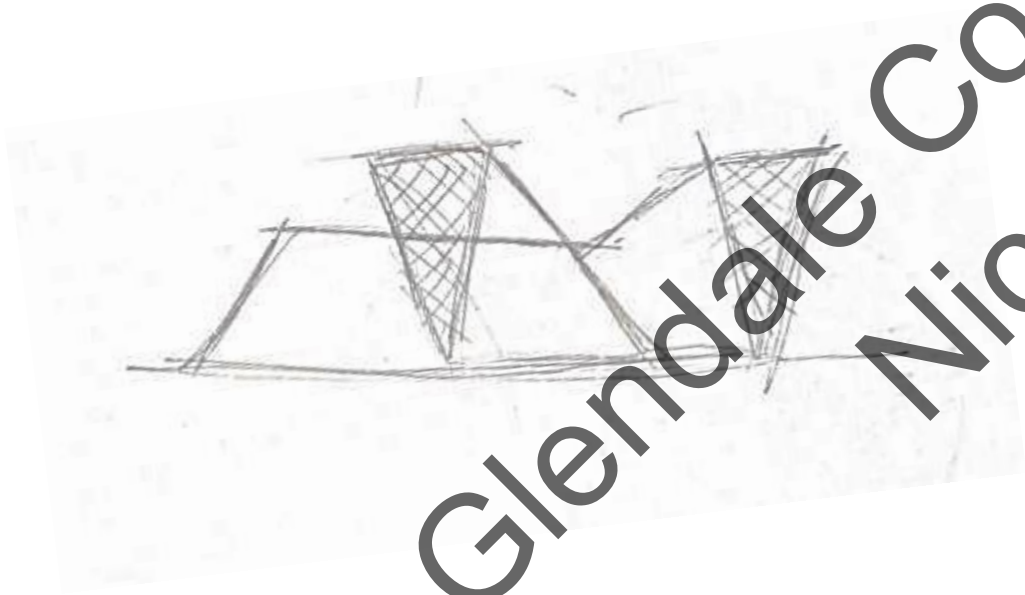
By incorporating non-circular elements into the design, the overall aesthetic achieved a sense of complexity and depth, while maintaining a cohesive and harmonious flow throughout the space.



H → HALL



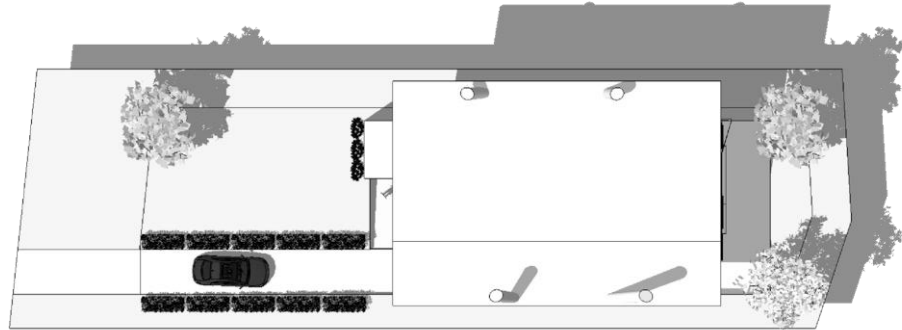
- GARAGE
- ENTRY
- FOYER
- LIVING ROOM
- KITCHEN
- LAUNDRY
- BEDROOM #2 (W.C + BATHROOM)



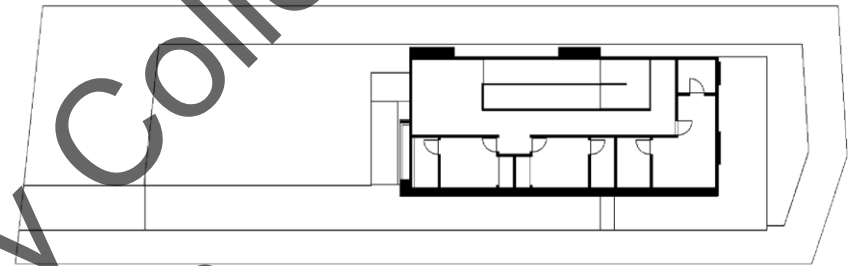
Glendale Community College
Nicole Palacios

My last design, which was the one I decided to use for the house I changed it completely to a different design concept, instead of basing it on the wheel I was more inspired by the wheelchair as a whole and wanted it to be perceived in a visible but not so obvious way on the facade. I wanted the wheelchair to be seen in profile, that's why I used the same colors and most of its materials.

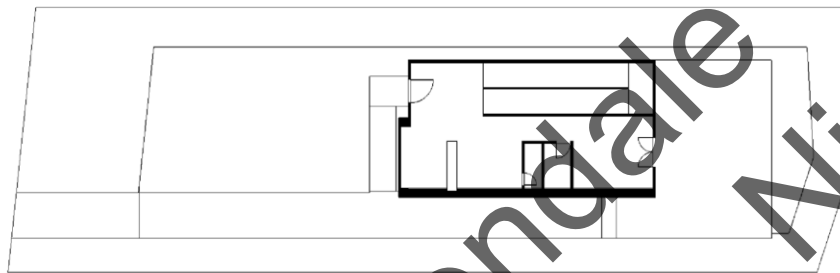
Through experimentation and iteration, I was able to successfully create a design that captured the spirit of motion and energy that was originally envisioned. The result was a visually compelling and innovative design that paid tribute to the athlete's impressive athletic achievements.



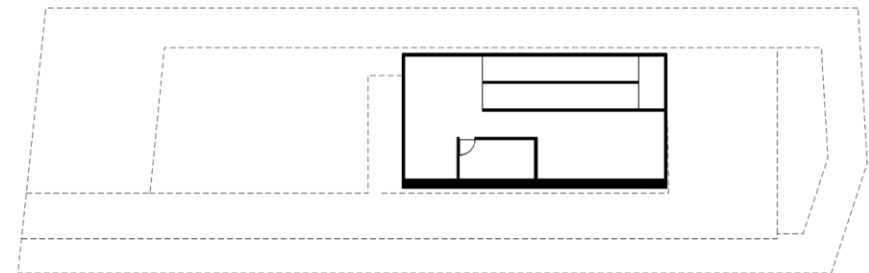
Site Plan



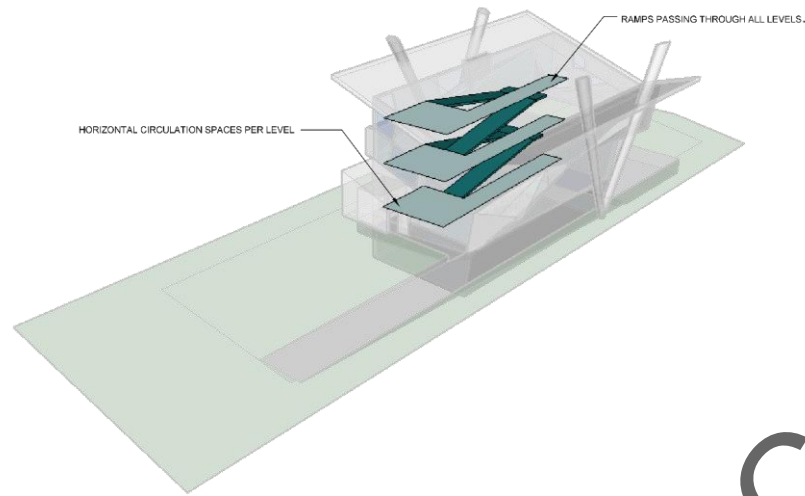
Second Level



Ground Level



Basement



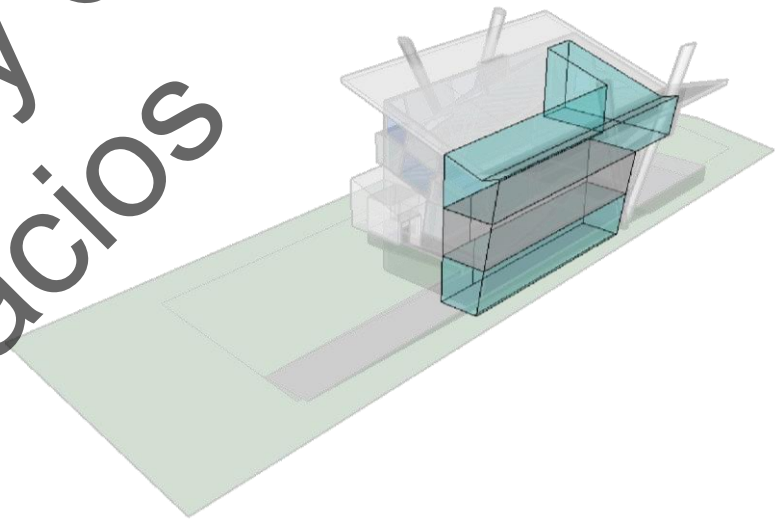
Circulation Diagram

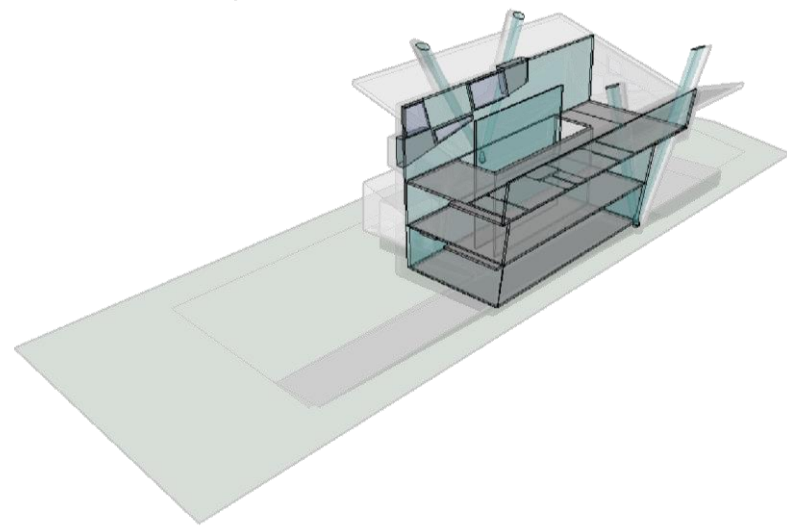
- HORIZONTAL (HALL)
- VERTICAL (RAMP)

Glendale Community College Nicole Palacios

Program Diagram

- PUBLIC
- PRIVATE

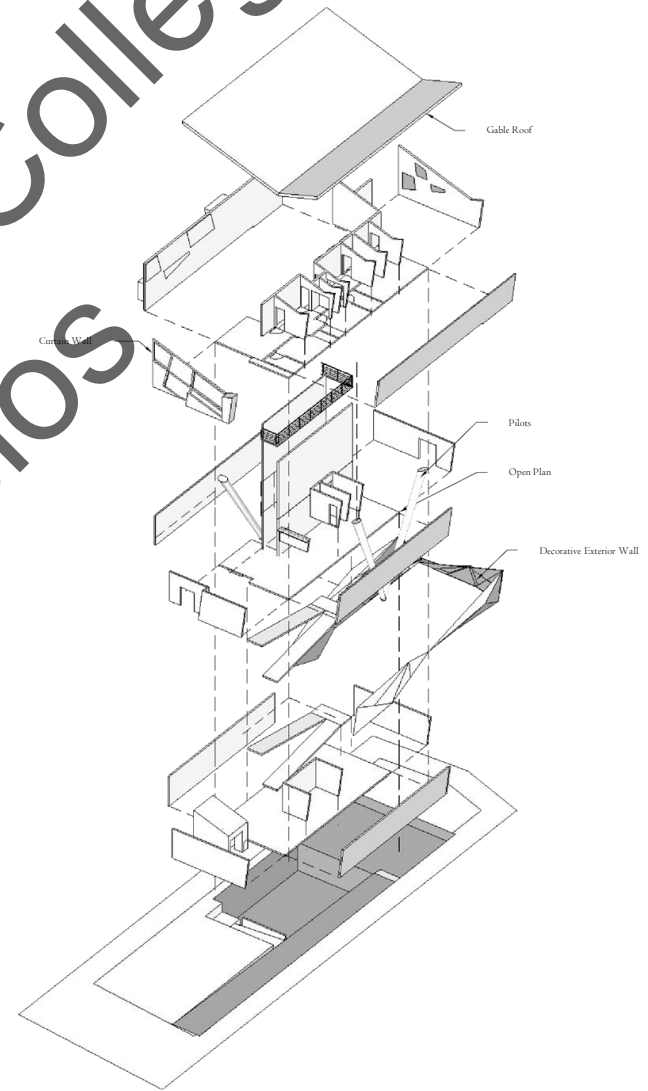




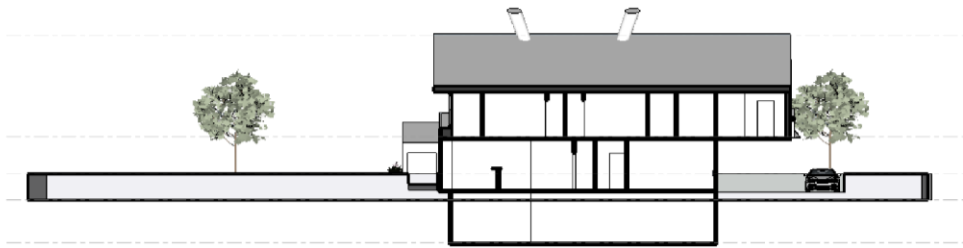
Circulation Diagram

- HORIZONTAL (FLOOR PLATES)
- VERTICAL (WALLS & COLUMNS)

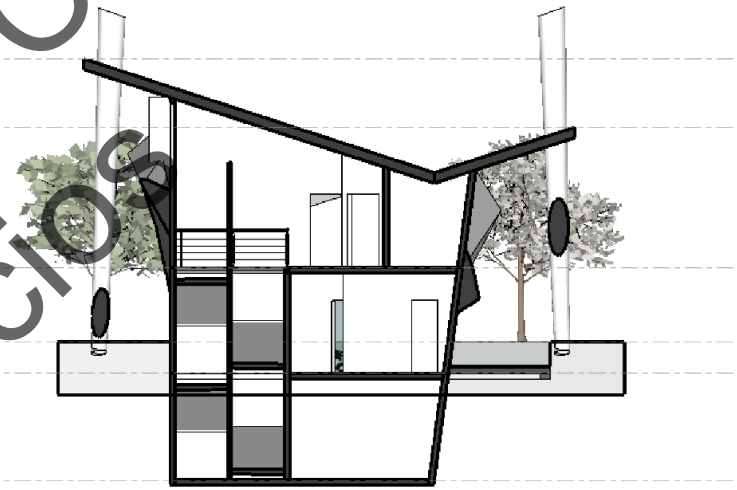
Glendale Community College Nicole Palacios



Exploded Diagram



Longitudinal Section



Transverse Section

Glendale Community College
Nicole Palacios



View of the Exterior Front



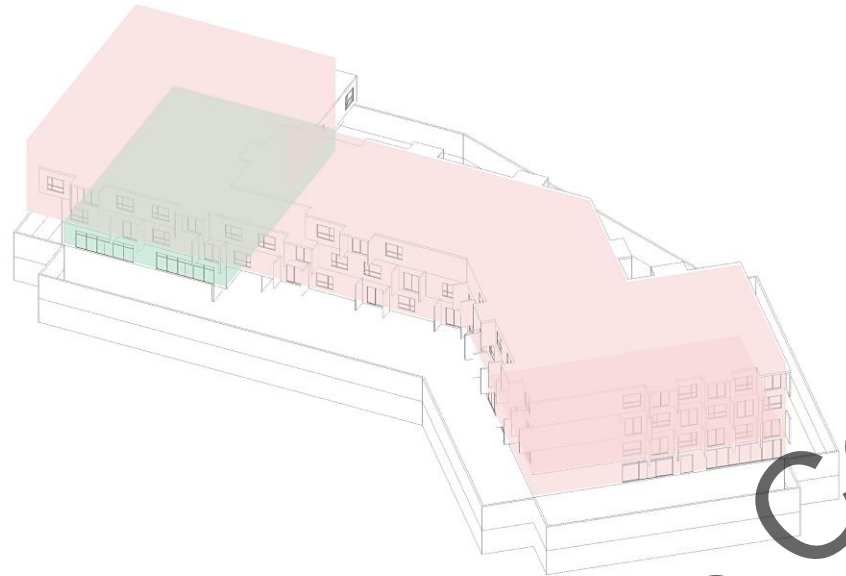
View of the Exterior Front

ARCH 125 Residential Architectural Design II – “Senior Mix-Used Housing”

First Year Design Studio
Glendale Community College, Winter 2022
Instructor: Professor Paul Chiu
Individual Project

Residential Mix-Used project located at the corner of Pico Blvd, and S Flower St, a block away from the Los Angeles Convention Center, nearby Pico Metro Blue line metro station. Includes 36 one-bedroom apartments, 16 two bedroom apt, 1 three bedroom apt, lounge, activity and community room (kitchen with access to the exterior), fitness room, laundry room for each floor, and store front areas.

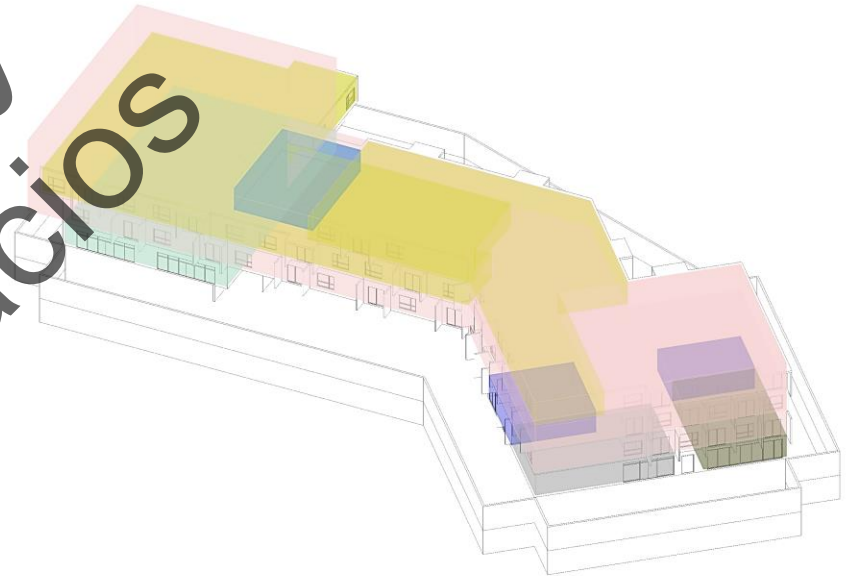
Circulation completely designed so that residents can move from the parking lot to their apartment in a private way and at the same time visitors can park and visit the areas open to the public. It has a mini traffic circle with a drop-off area in case they do not want to park. The total area of the site is 46,269sq ft.



Program Diagram

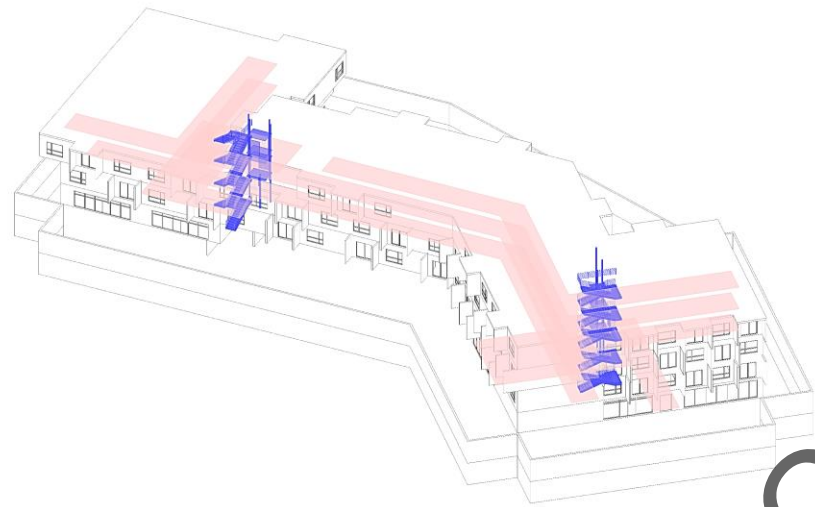
- PUBLIC
- PRIVATE

Glendale Community College Nicole Palacios



Program Diagram (Detail)

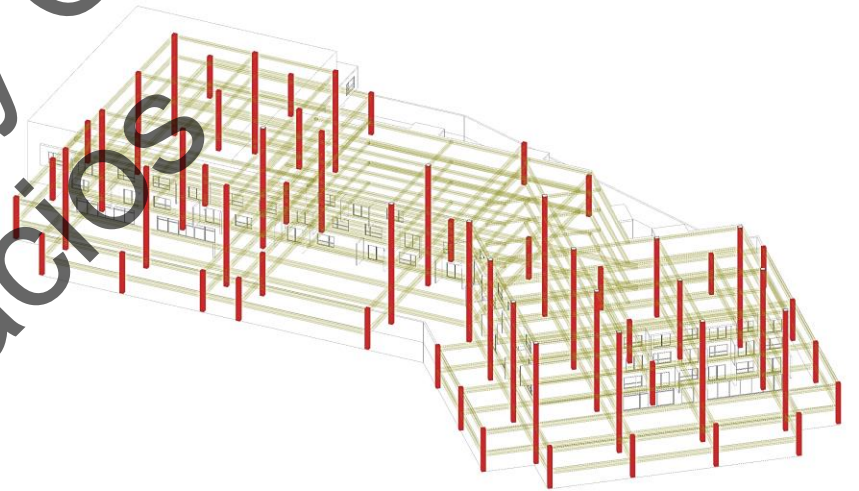
- 3 BEDROOM APARTMENT
- 2 BEDROOM APARTMENT
- 1 BEDROOM APARTMENT
- FRONT STORES
- PARKING
- LOBBY & ADMIN
- LOUNGE
- GYM



Program Diagram

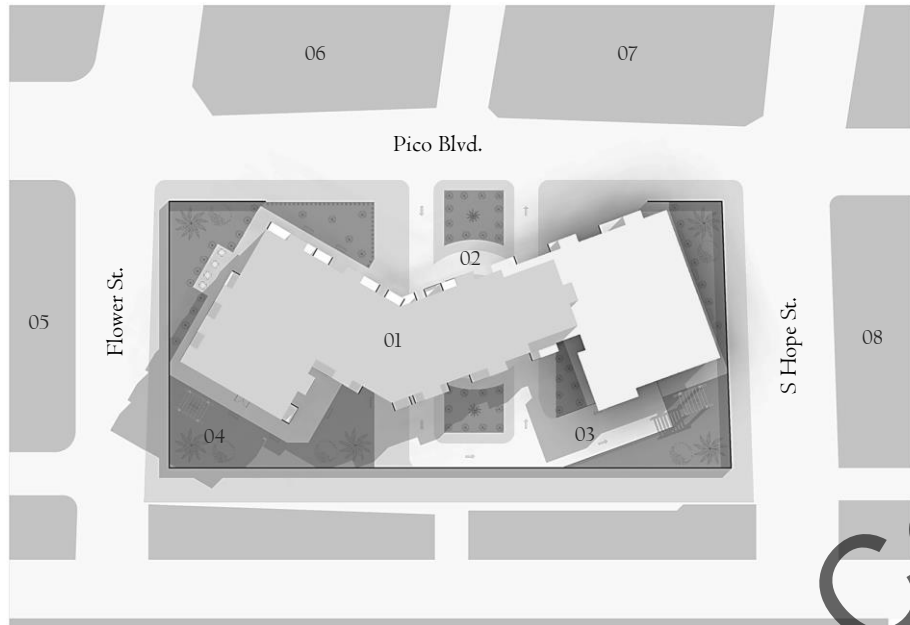
- HORIZONTAL (HALL)
- VERTICAL (STAIRS & ELEVATOR)

Glendale Community College Nicole Palacios



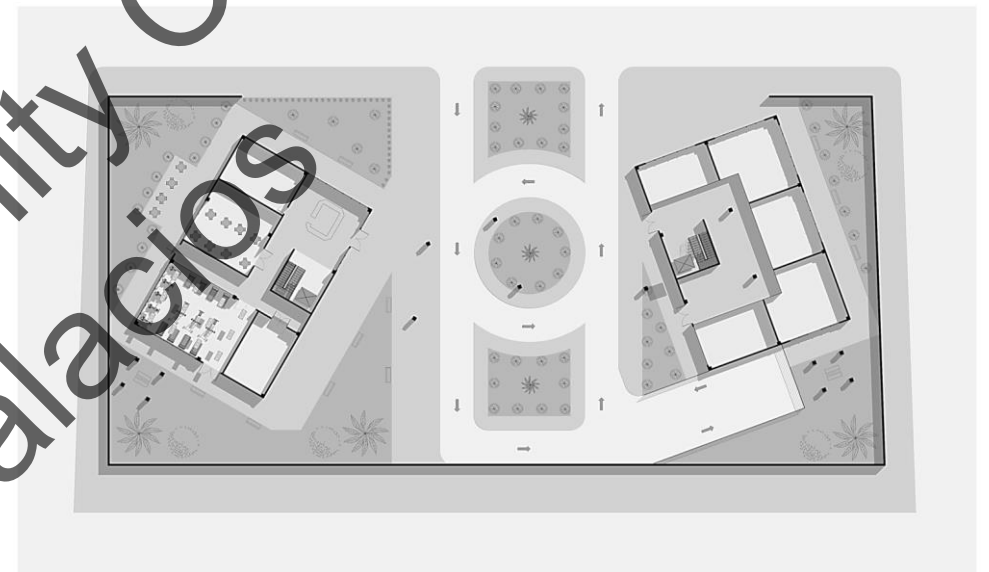
Program Diagram (Detail)

- HORIZONTAL (BEAMS)
- VERTICAL (COLUMNS)



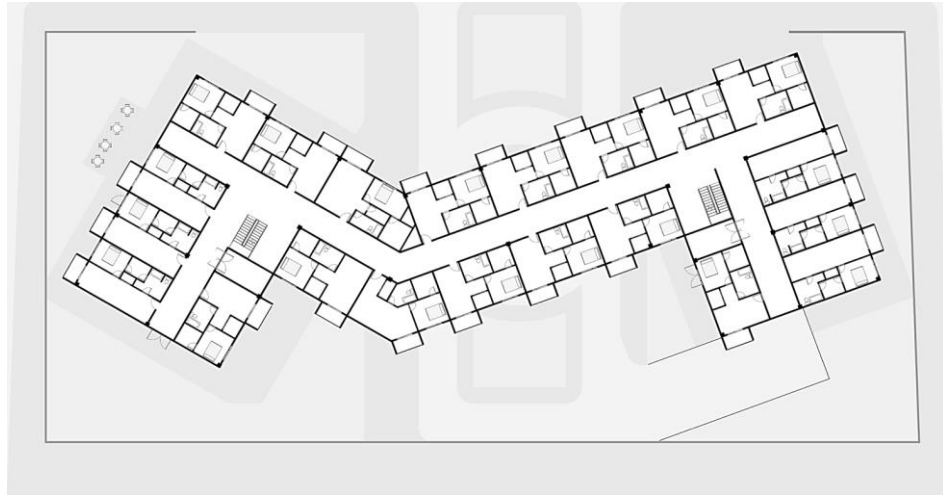
Site Plan

- 01 Residential Mixed-use Building
- 02 Drop-off Area
- 03 Entrance to Underground Parking
- 04 Outdoor Area
- 05 Oviatt Apartments
- 06 Kents Pool Supply
- 07 Jones, Partners: Architecture
- 08 Onyx Apartments

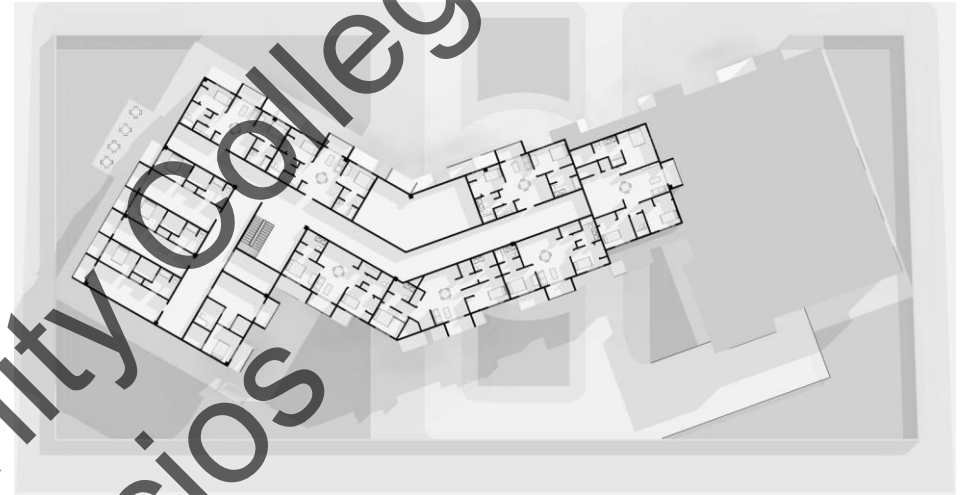


Ground Level

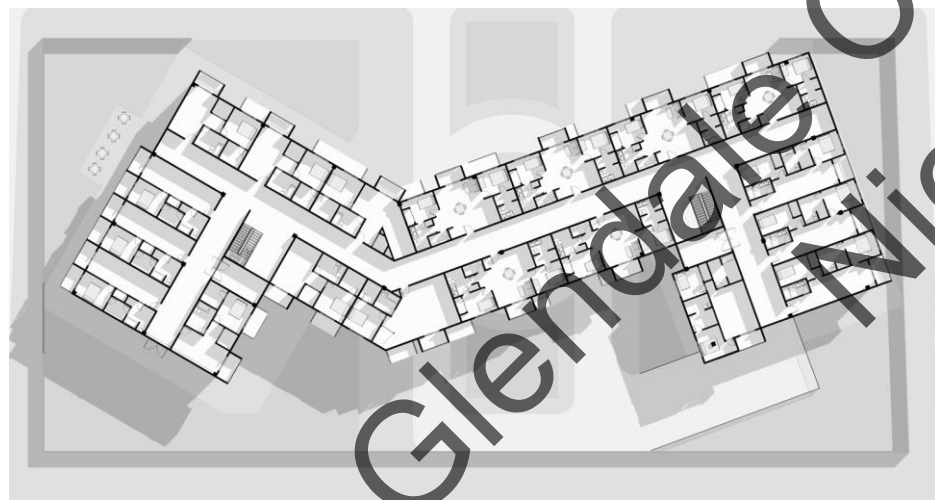
Glendale Community College
Nicole Palacios



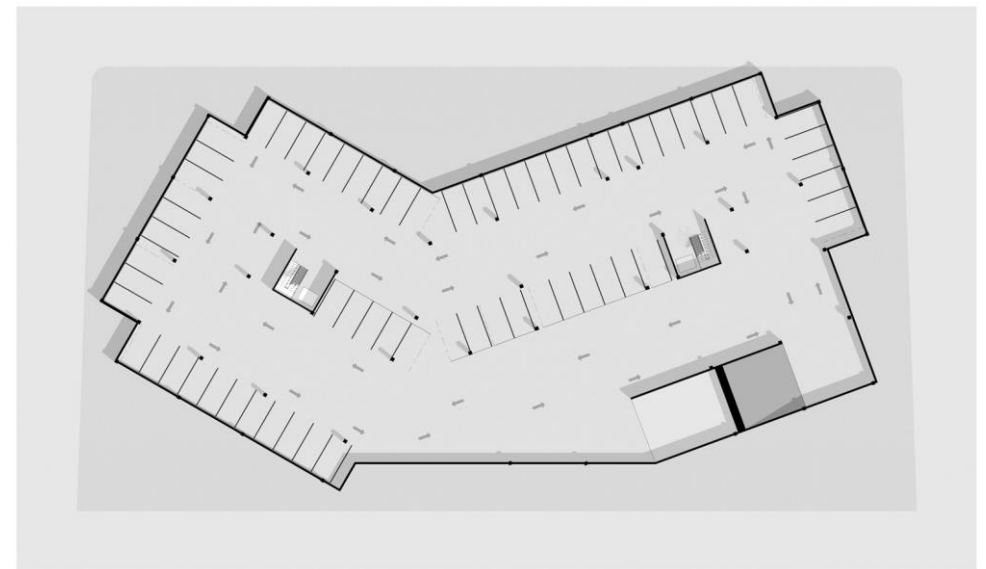
Level 2 (1 Bedroom Apt)



Level 4 (1, 2, and 3 Bedroom Apt)



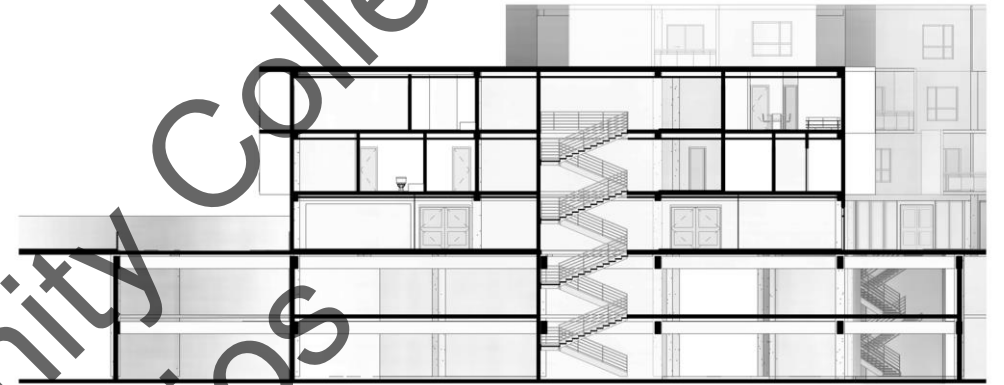
Level 3 1&2 Bedroom Apt



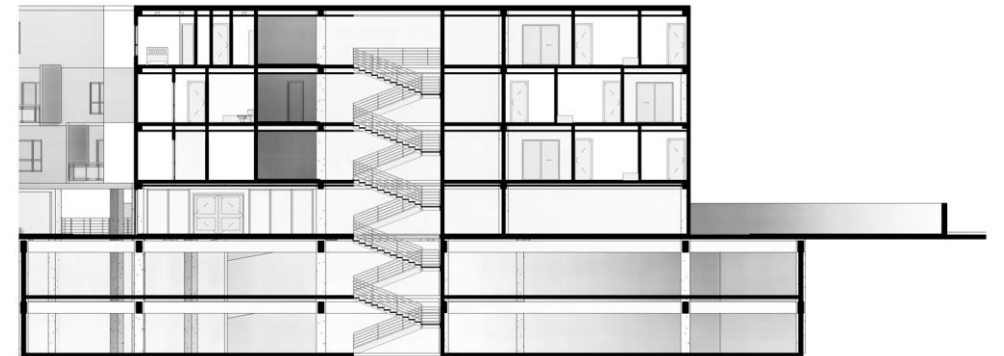
Underground Parking Level 1



Longitudinal Section
Residential Mixed-use Building and Underground Parking

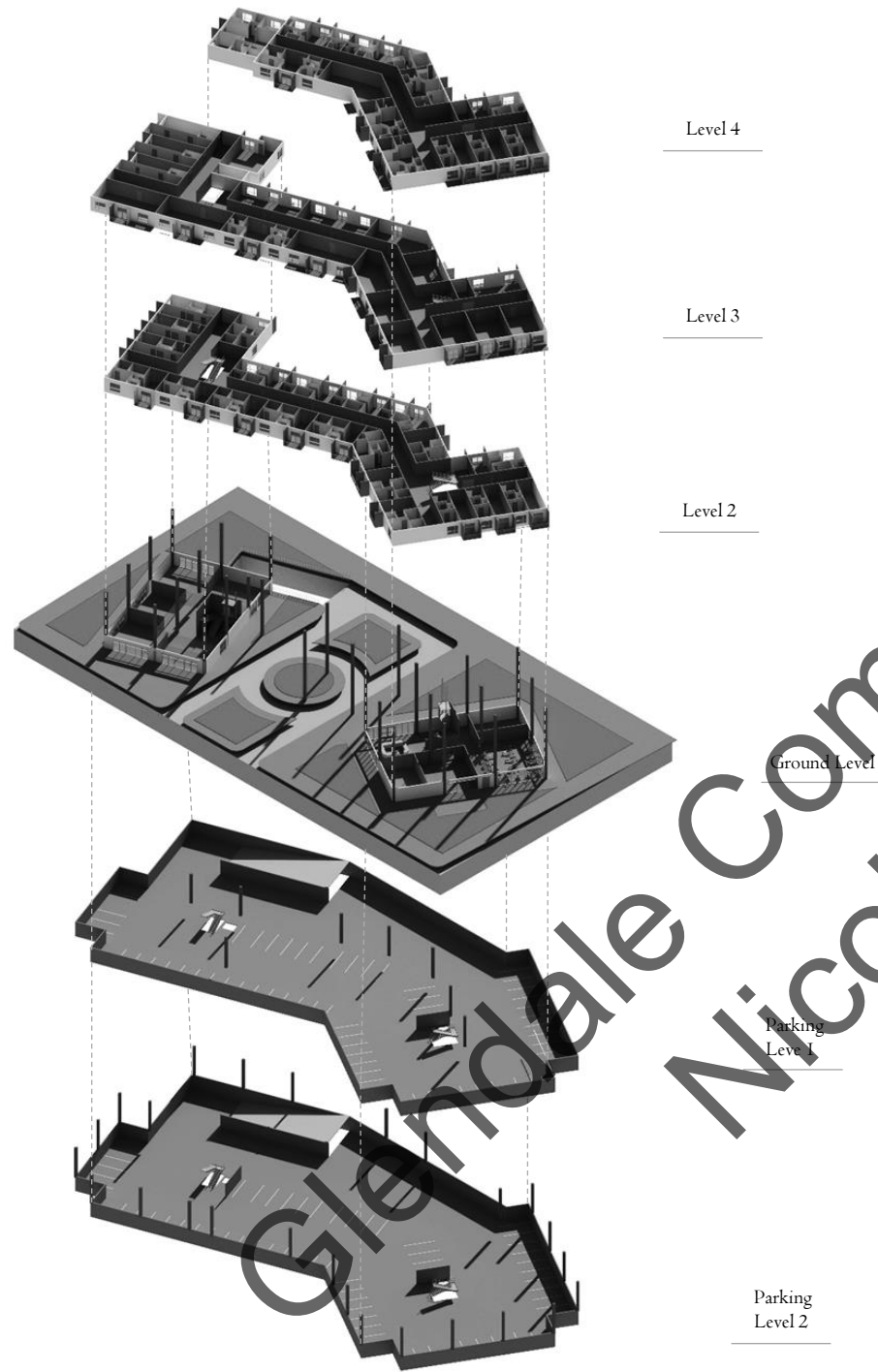


Transverse Section I
Apartments and Underground Parking



Transverse Section II
Apartments and Underground Parking

Glendale Community College
Nicole Palacios



Exploded View



Interior View of a 2 Bedroom Apartment



View of the Exterior Front (Mall)

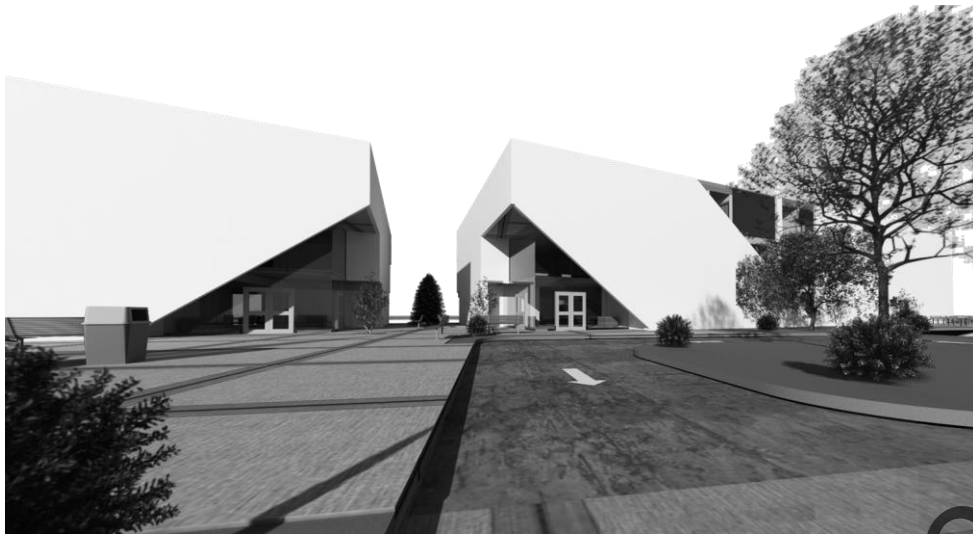


View of the Exterior Front (Offices)

ARCH 130 Commercial Architectural Design I – “New Little Tokyo”
 Second Year Design Studio
 Glendale Community College, Fall 2022
 Instructor: Professor Paul Chiu
 Individual Project

New Little Tokyo project is a brand new commercial mixed-use building located in Little Tokyo at the corner of 1st St, and Alameda St, in front of the Japanese American National Museum, right behind of a metro station.

Little Tokyo, spanning just a few square blocks, is the smallest district in Downtown. Its boundaries are Temple Street to the north, Fourth Street to the south, Alameda Street to the east, and Main Street to the west. The First Street, located between San Pedro Street and Central Avenue, is a historical hub where 13 original buildings of Little Tokyo still stand.



View of the Exterior Back

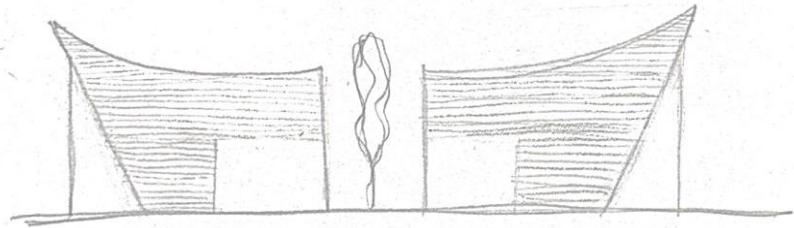
This project includes 3 major restaurants, food court area, outdoor area, professional office spaces, retail stores and sale rooms. The design concept on the façade is inspired by a Japanese Torii, as it is one of the most iconic symbols of Japan. The circulation of the complex is very wide as it has a drop-off area, underground parking that connects directly to the mall, offices and outdoor areas.



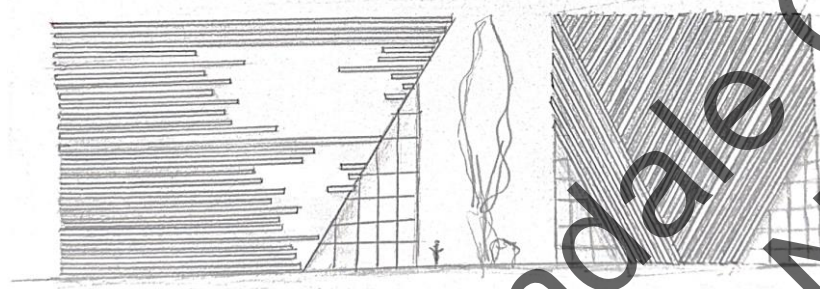
Japanese Torii

First Concept Design

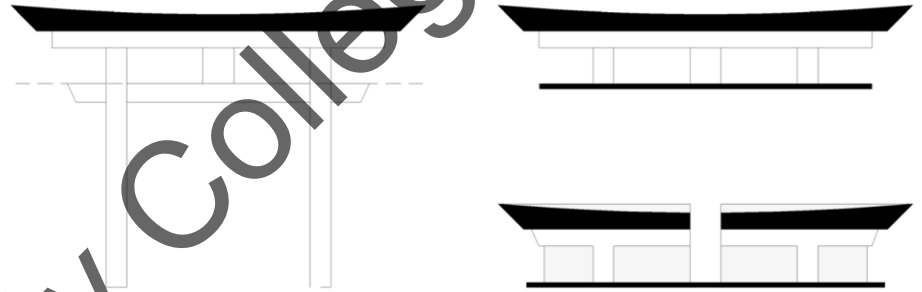
My design concept was initially inspired by the Japanese torii, which is a highly recognizable symbol in Japan. I aimed to incorporate this symbol into the building's façade. My initial design, depicted in the figure above, centered on the pointed tips of the torii. I was drawn to the angles of the original symbol and wanted to capture them on the building's roof to create the impression that the torii was enveloping the entire structure.



Second Concept Design



Third Concept Design



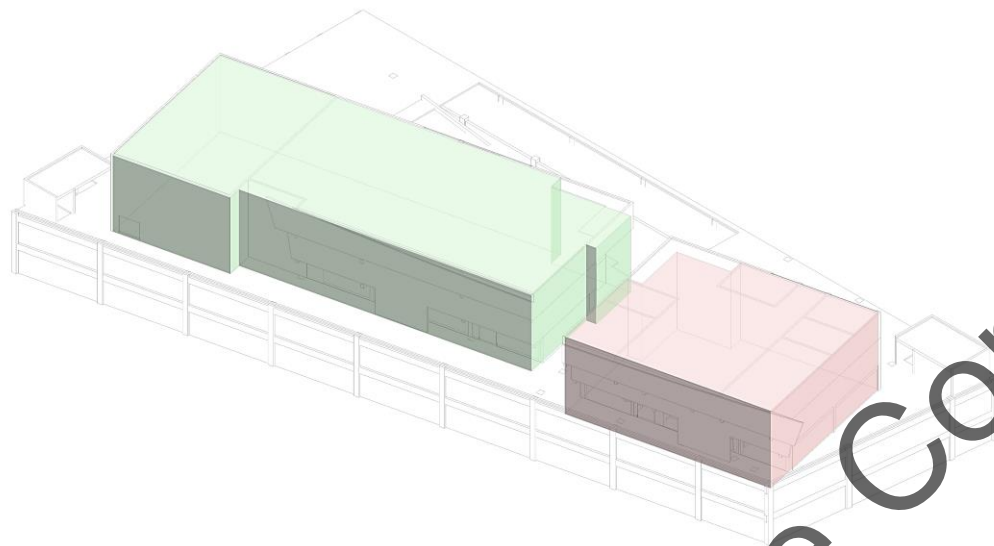
Japanese Torii



Final Design- Front

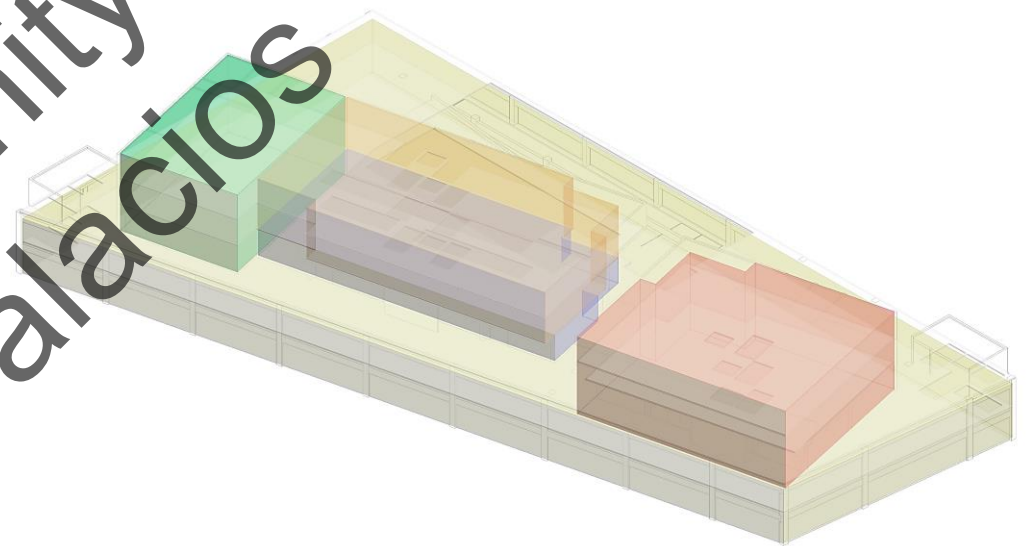


Final Design- Back



Program Diagram

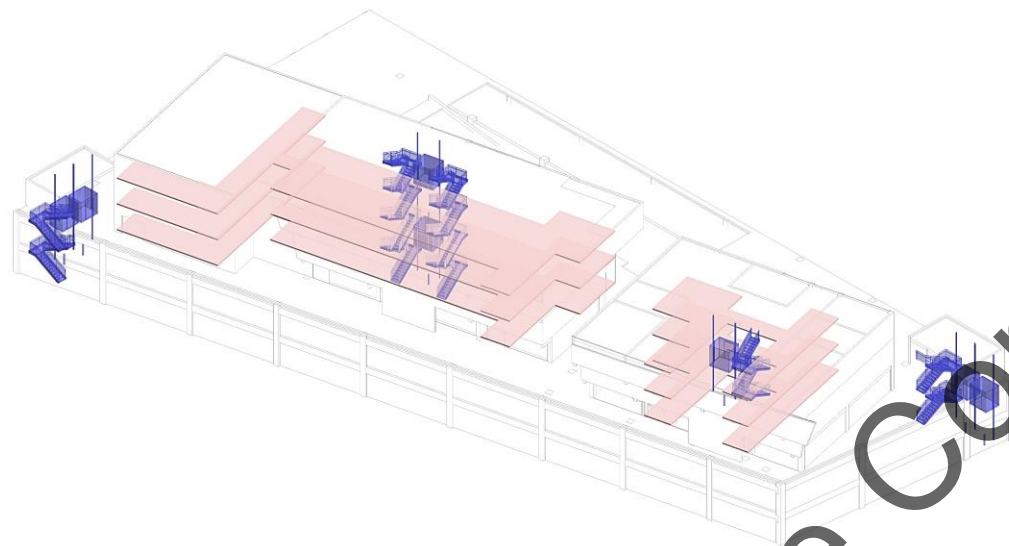
- PUBLIC
- PRIVATE



Program Diagram (Detail)

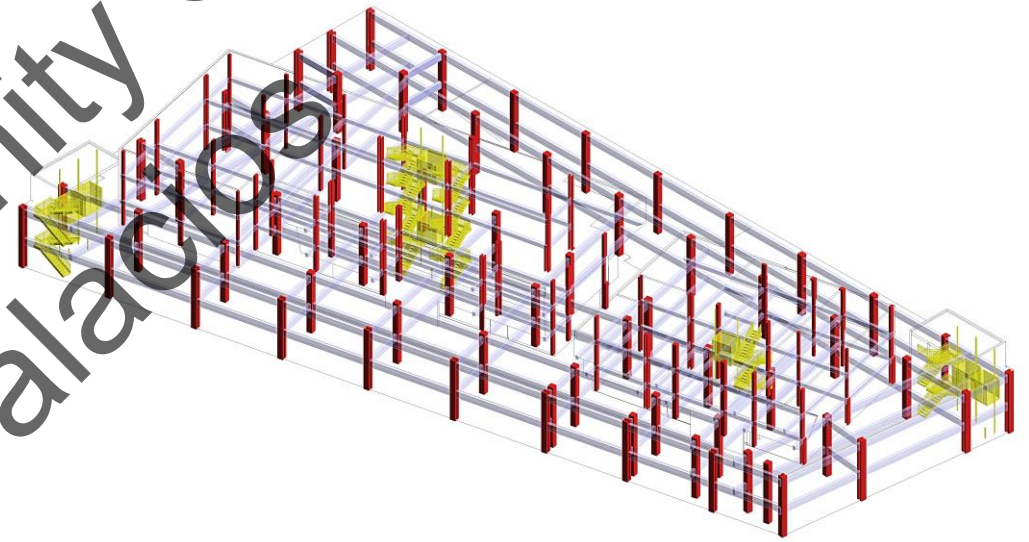
- RETAIL STORES
- FOOD COURT
- OFFICES
- RESTAURANTS
- PARKING

Glendale Community College
Nicole Palacios



Circulation Diagram

- VERTICAL (STAIRS & ELEVATORS)
- HORIZONTAL (HALLS)



Structural Diagram

- VERTICAL (COLUMNS)
- HORIZONTAL (BEAMS)

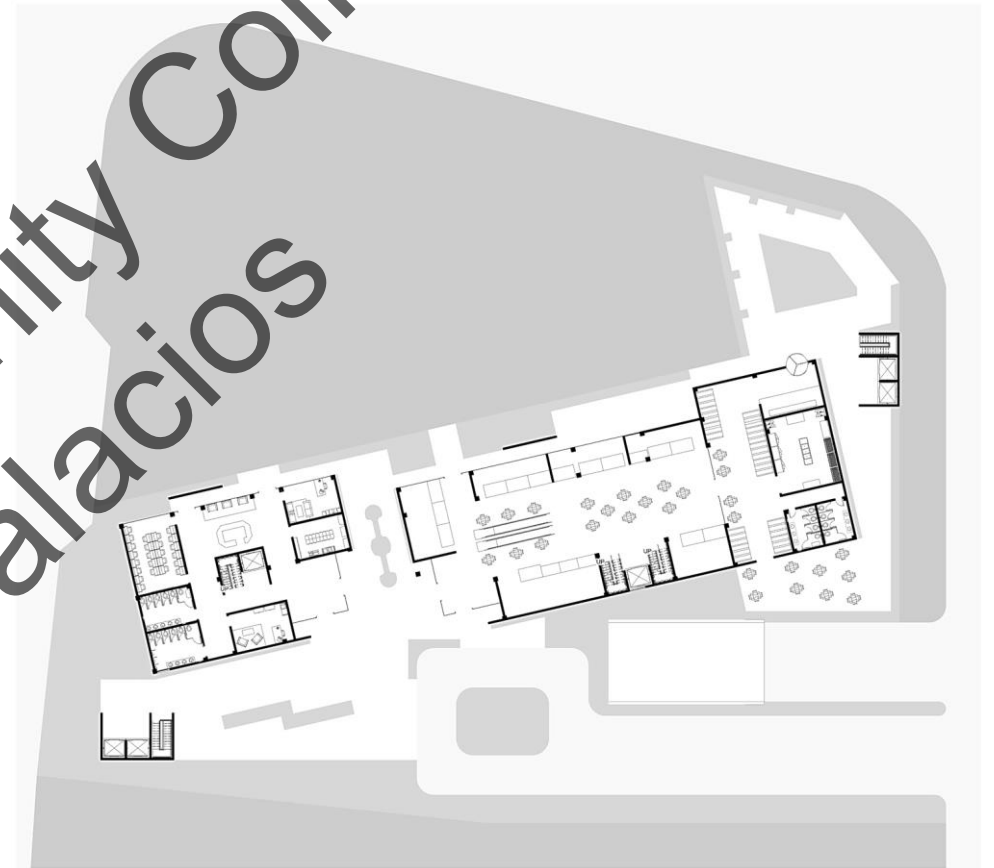
Glendale Community College
Nicole Palacios



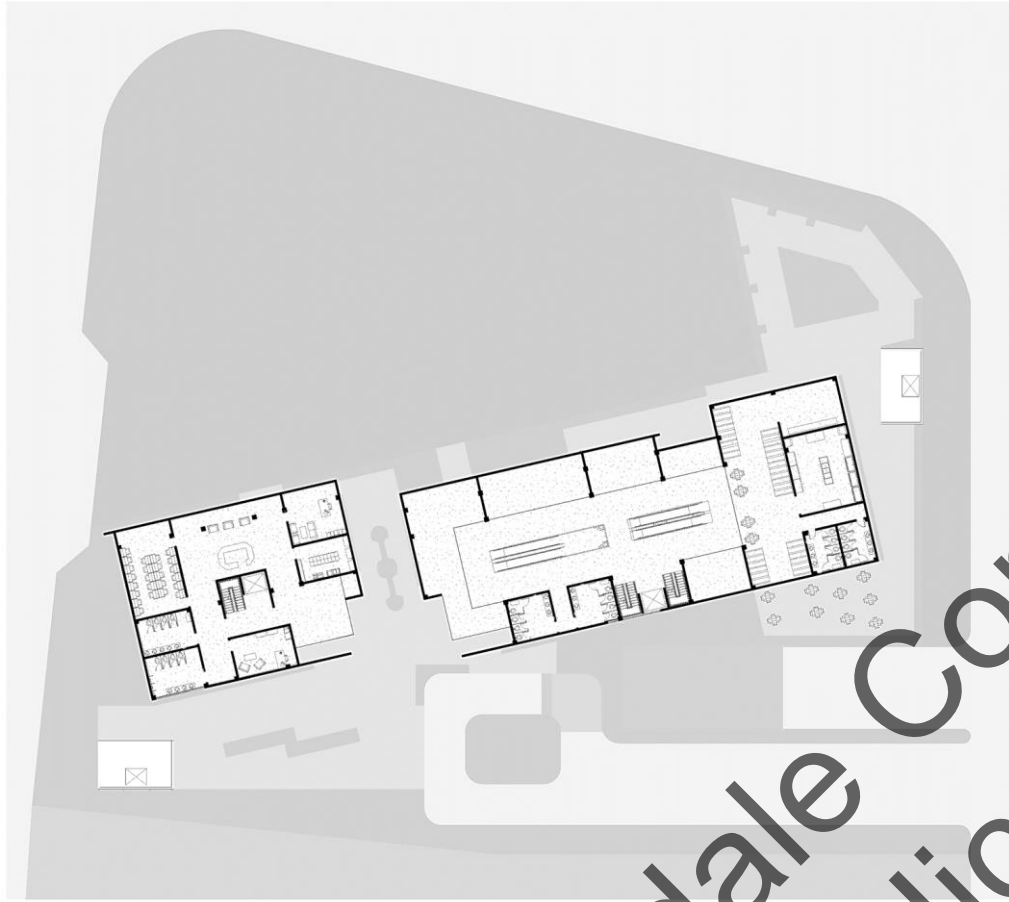
Site Plan

- 01 Professional Office Spaces
- 02 Retail Stores and Sales Room
- 03 Outdoor Area
- 04 Drop-off Area
- 05 Entrance to Underground Parking
- 06 Metro Station
- 07 Japanese Village Plaza
- 08 Japanese American National Museum
- 09 Multi-Family Mixed-Use Residential

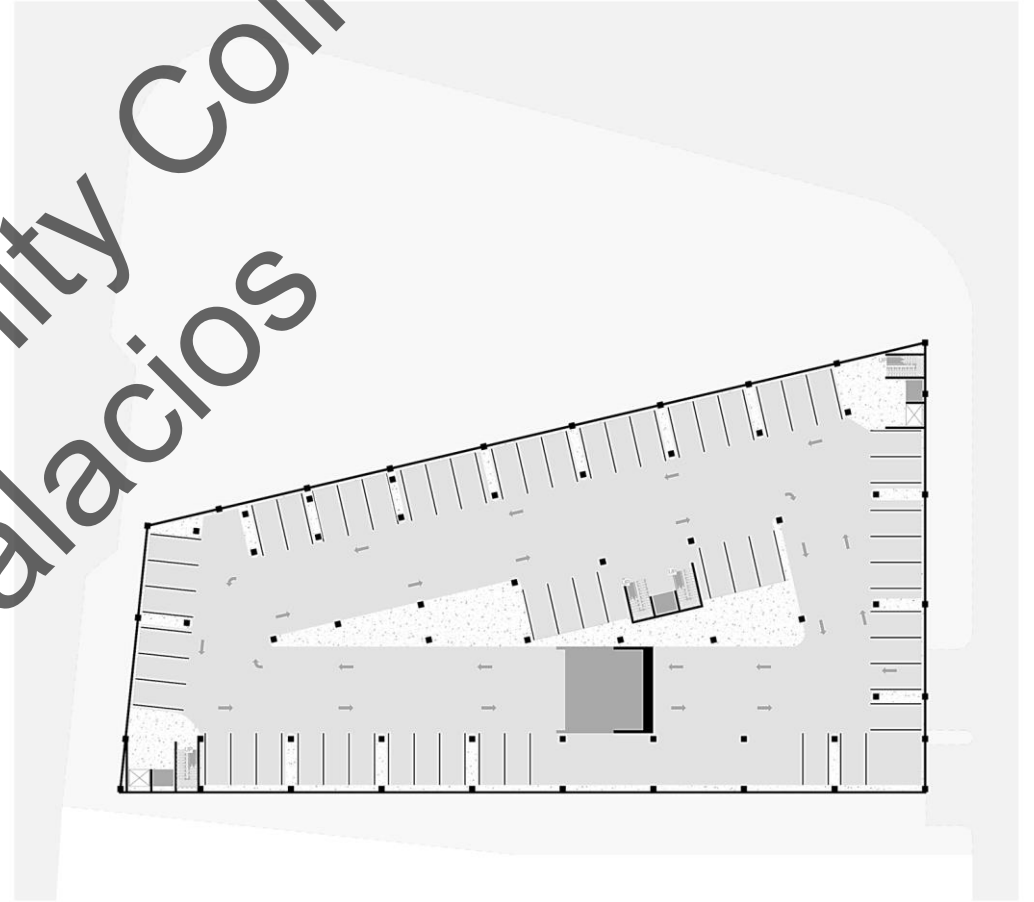
Glendale Community College
Nicole Palacios



Ground Level

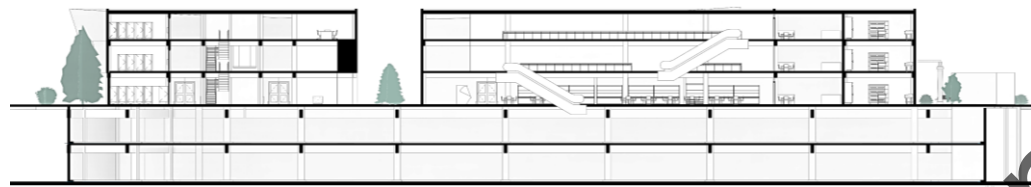


Level 2

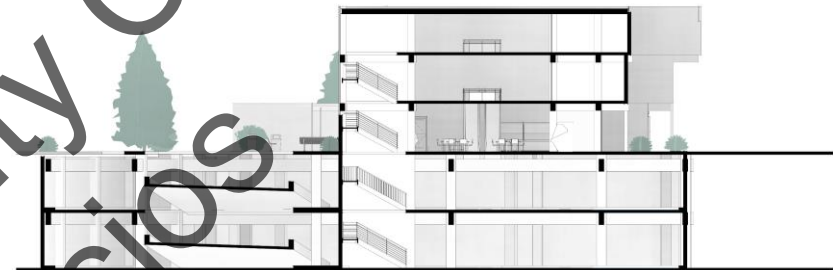


Underground Parking Level I

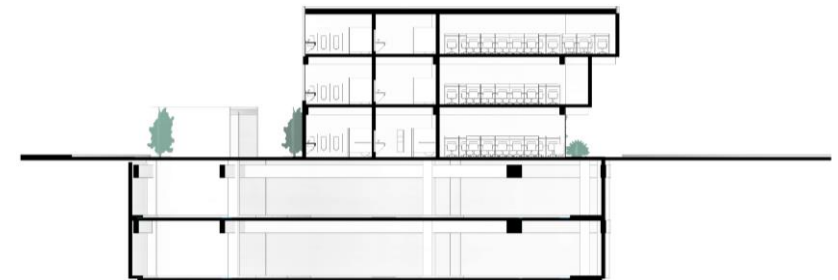
Glendale Community College Nicole Palacios



Longitudinal Section
Both Buildings and Underground Parking



Transverse Section I
Retail Stores and Underground Parking



Transverse Section II
Professional Offices and Underground Parking

Glendale Community College
Nicole Palacios