

Glendale Community College
Marlo Valente



Marlo Valente
Architecture Portfolio
2023

m. valente
architecture student



Glendale Community College
Marlo Valente

architecture portfolio - 2023

education
Glendale Community College, 2020 - 2023

skills
Twinmotion AutoCAD SketchUp
Revit Rhino Hand Sketching

contents

Entenhaus - 4	Little Tokyo - 20	CCCAP Competition '23 - 36
Senior Housing - 12	Arrow Path House - 28	Granada Hills Home - 38

entenhaus

Interior Design
Conceptual Project

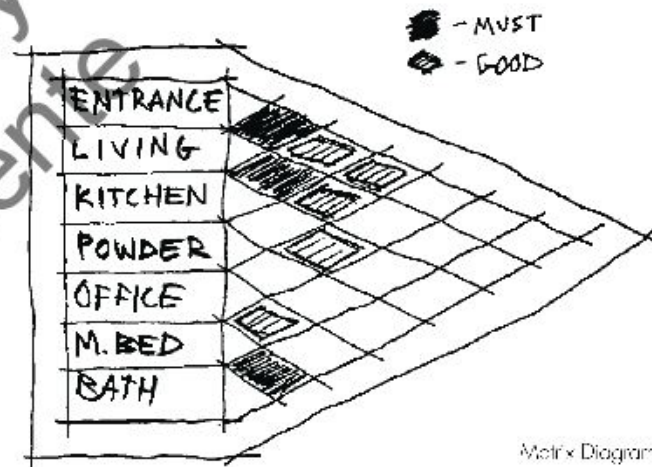
ARCH 141
FALL 2021

Entenhaus is a mid-century modern 1000 sq ft home designed for two Disney Graphic Designers from Germany, inspired by the beloved character, Donald Duck. The exterior of the home features a sleek, minimalist design with clean lines and a neutral color palette, accented by playful elements.

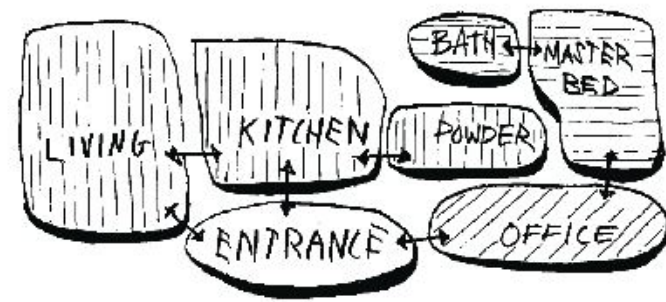
Inside, the home is divided into two main living areas, each designed to reflect the individual personalities and tastes of the residents. One side of the home features a bright and colorful open-plan living, dining, and kitchen area and large windows that flood the space with natural light. The other side of the home features a more subdued and cozy retreat, with a comfortable lounge and a small home office, perfect for working on graphic design projects.



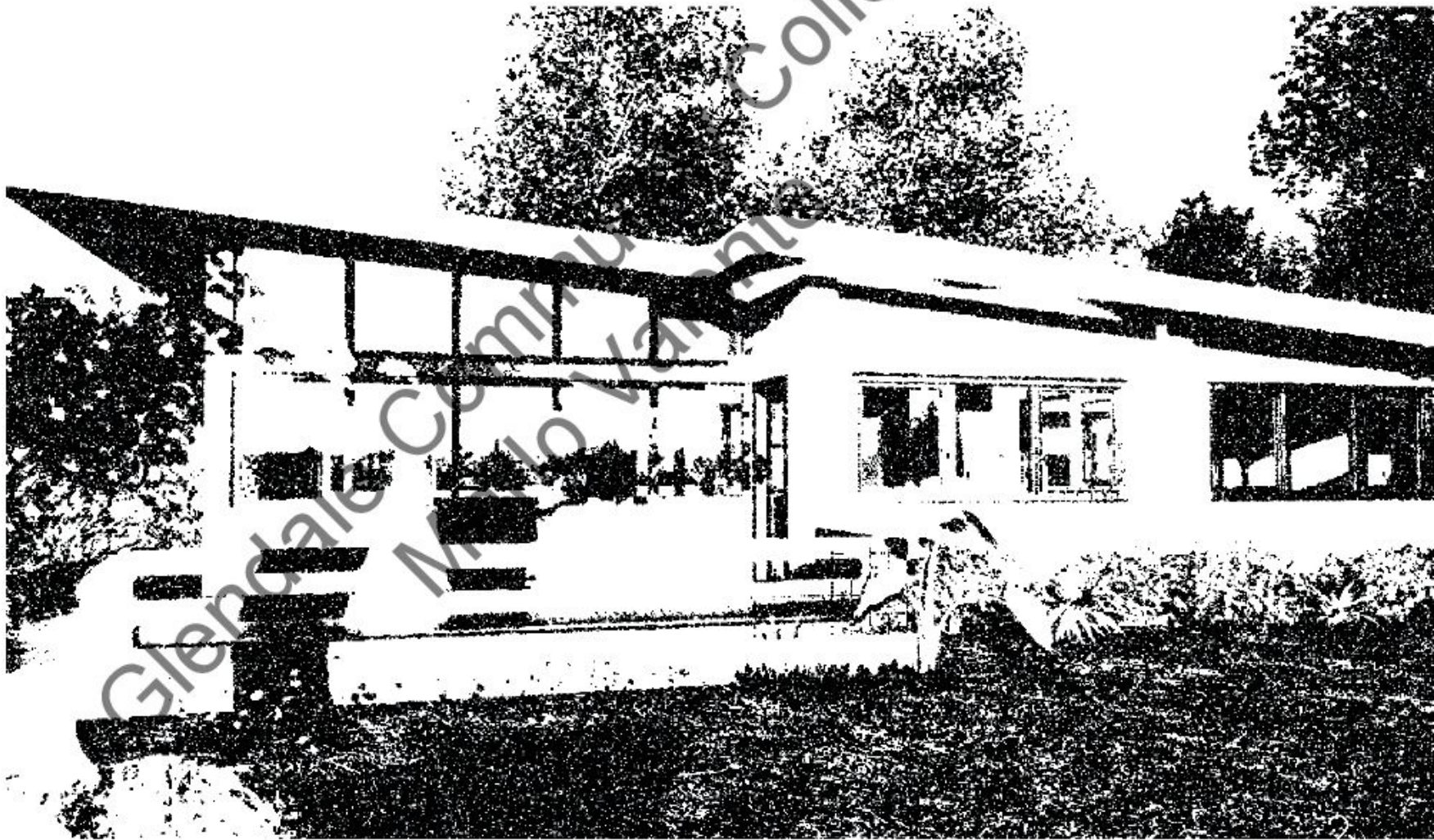
Existing Home



Matrix Diagram



Bubble Diagram



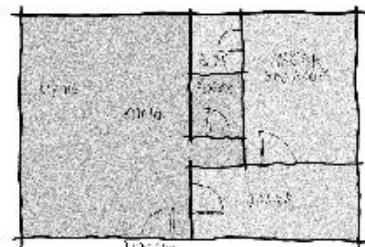
Entenhaus Exterior



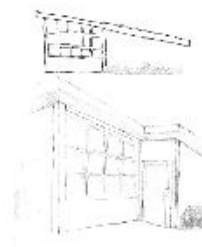
View from living room towards kitchen



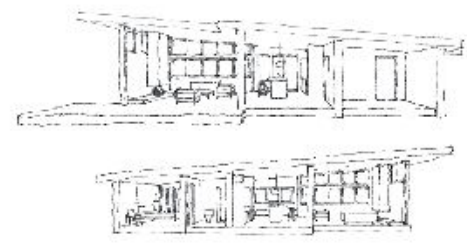
Sketch of bar/ Lounge Chair



early floor plan concept

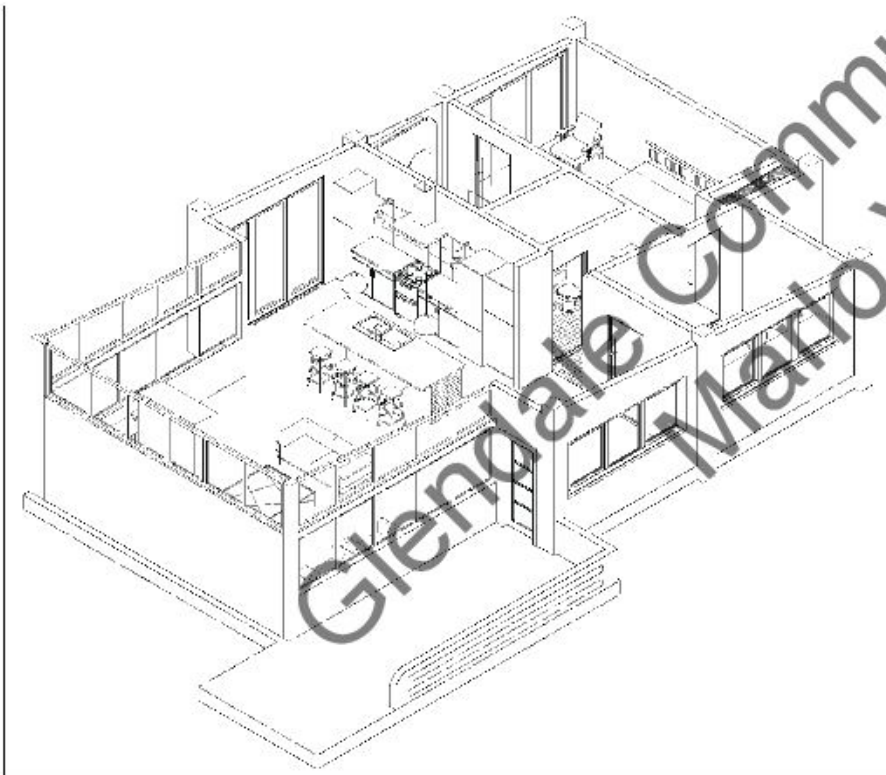


early sketches

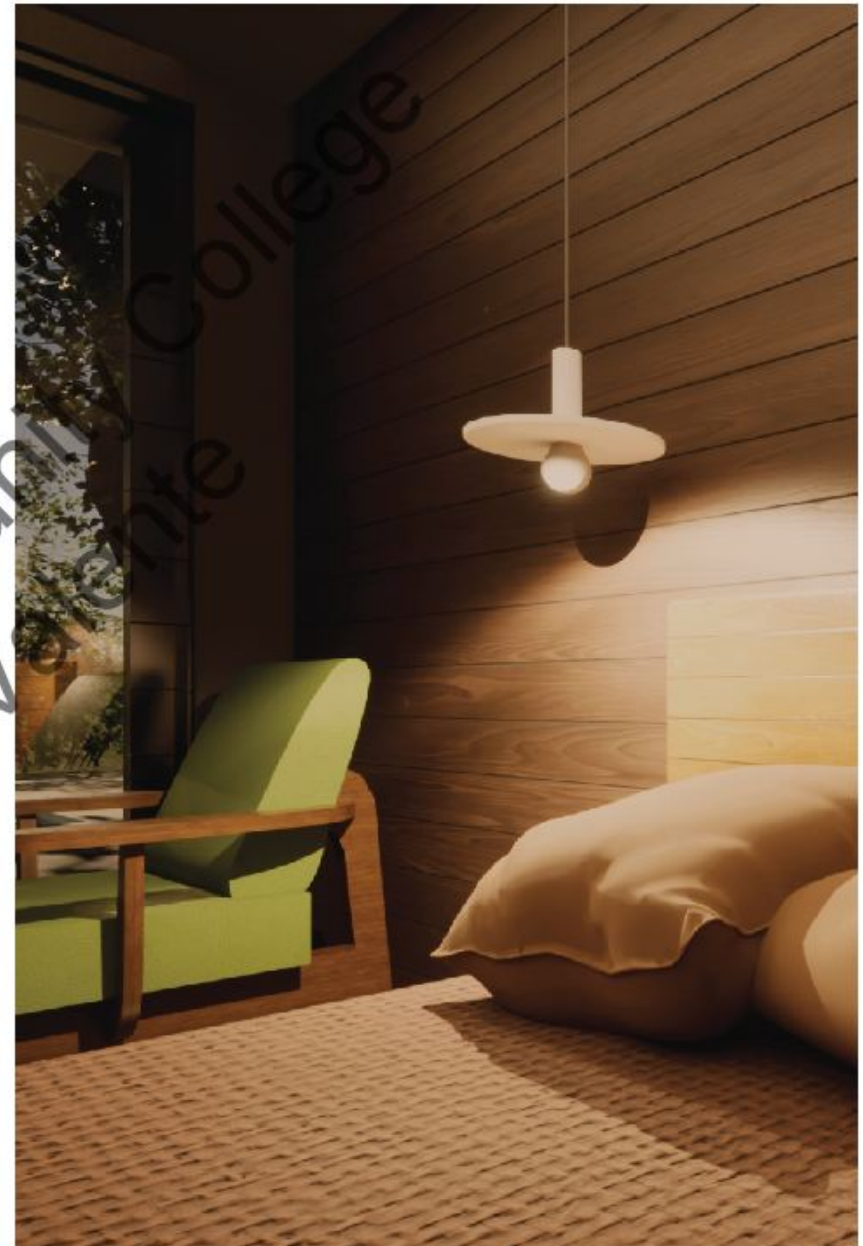




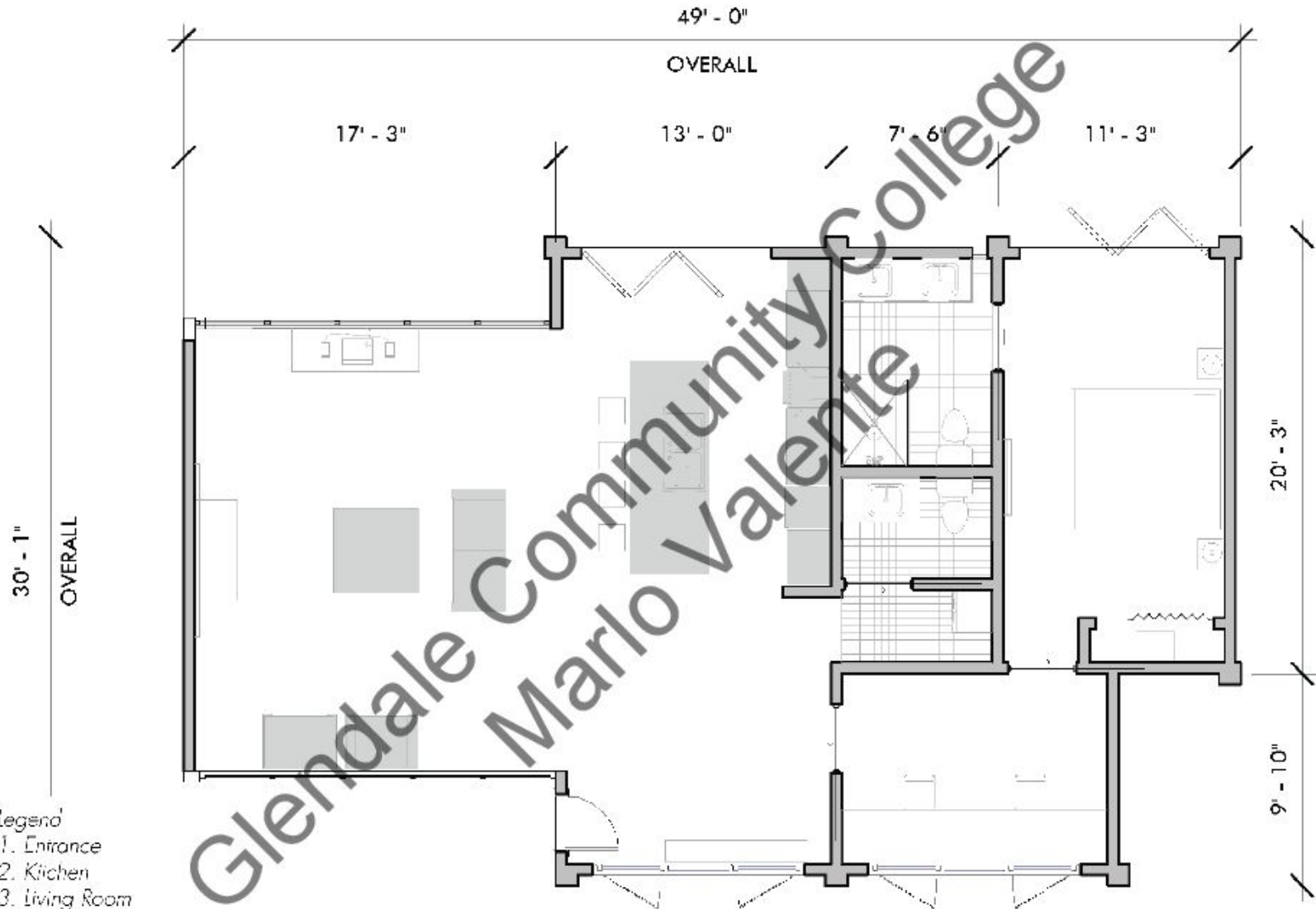
3D render of bedroom



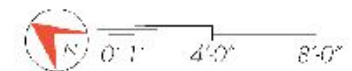
3D Diagram



3D render bedroom detail



- Legend
- 1. Entrance
 - 2. Kitchen
 - 3. Living Room
 - 4. Laundry
 - 5. Powder Room
 - 6. Office
 - 7. Masier Bedroom
 - 8. Masier Bathroom





3D render of kitchen





© Glendale Community College
Marlo Valente

senior housing

Residential Architectural Design II

ARCH125

WINTER 2022

The OldFolk A-GO-GO combines senior housing with a curated bookstore and cozy calé, fostering a vibrant community. Residents can explore diverse literature, engage in stimulating conversations, and form lasting connections. Thoughtfully designed apartments, communal areas, and supportive staff ensure comfort and well-being. By embracing the power of books and social interaction, we enhance the lives of seniors, creating an extraordinary living experience.

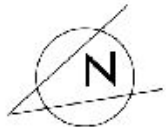


Glendale Community College
Marlo Valente

Glendale Community College
Marlo Valente

FLOOR PLANS

- LANDSCAPING
- TRASH CHUTE / COLLECTION
- EXITS



LEVEL 5
10 - TWO BEDROOMS
1 - THREE BEDROOM

LEVEL 4
9 - ONE BEDROOMS
3 - TWO BEDROOMS

LEVEL 3
9 - ONE BEDROOMS
3 - TWO BEDROOMS

LEVEL 2
9 - ONE BEDROOMS

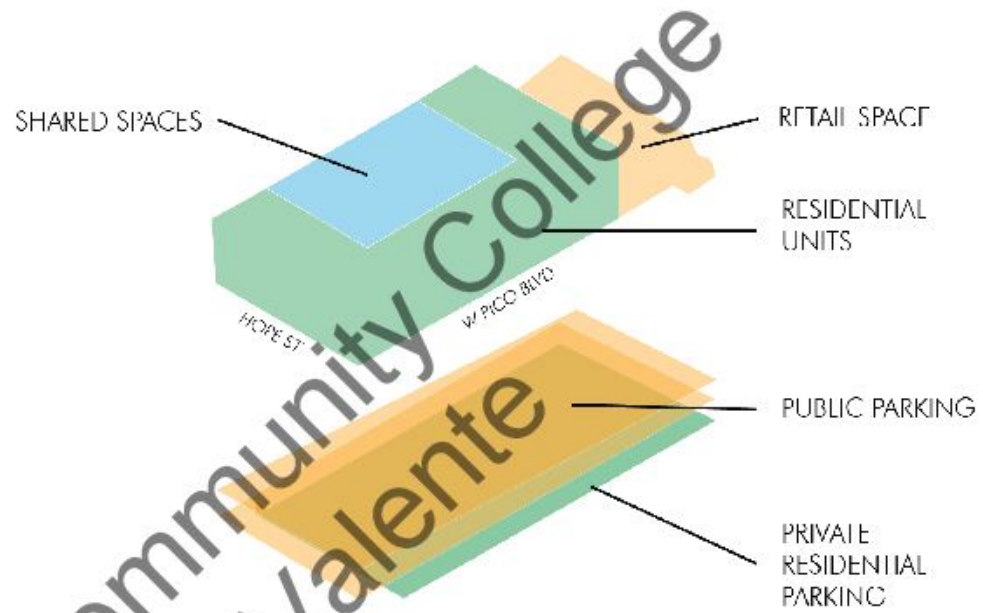
LEVEL 1
9 - ONE BEDROOMS
RETAIL SPACE

LOBBY
PUBLIC PARKING (GROUND LEVEL)

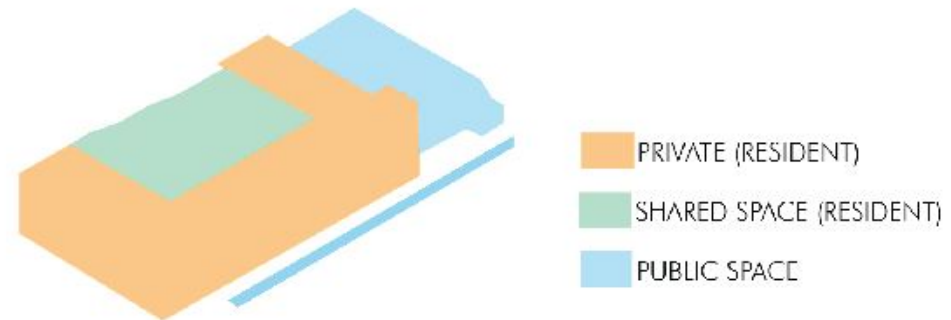
PUBLIC PARKING (UNDERGROUND)

RESIDENTIAL PARKING

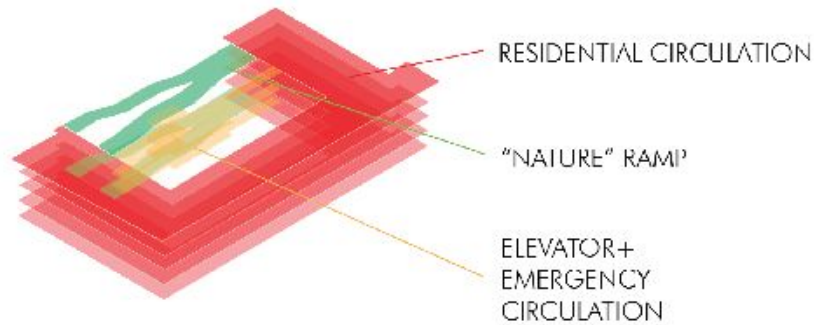
PARTI DIAGRAM



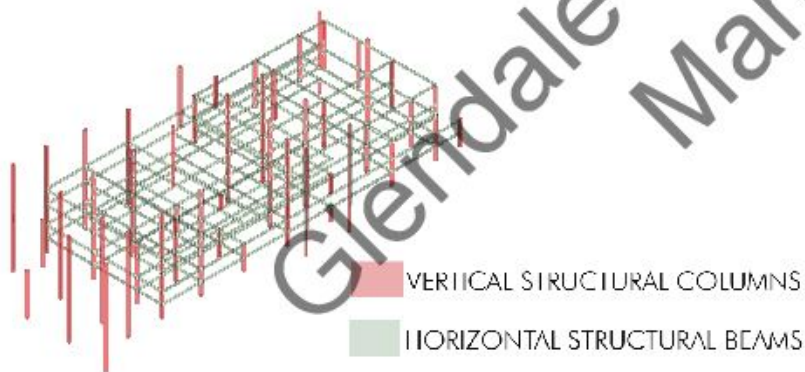
PROGRAM DIAGRAM



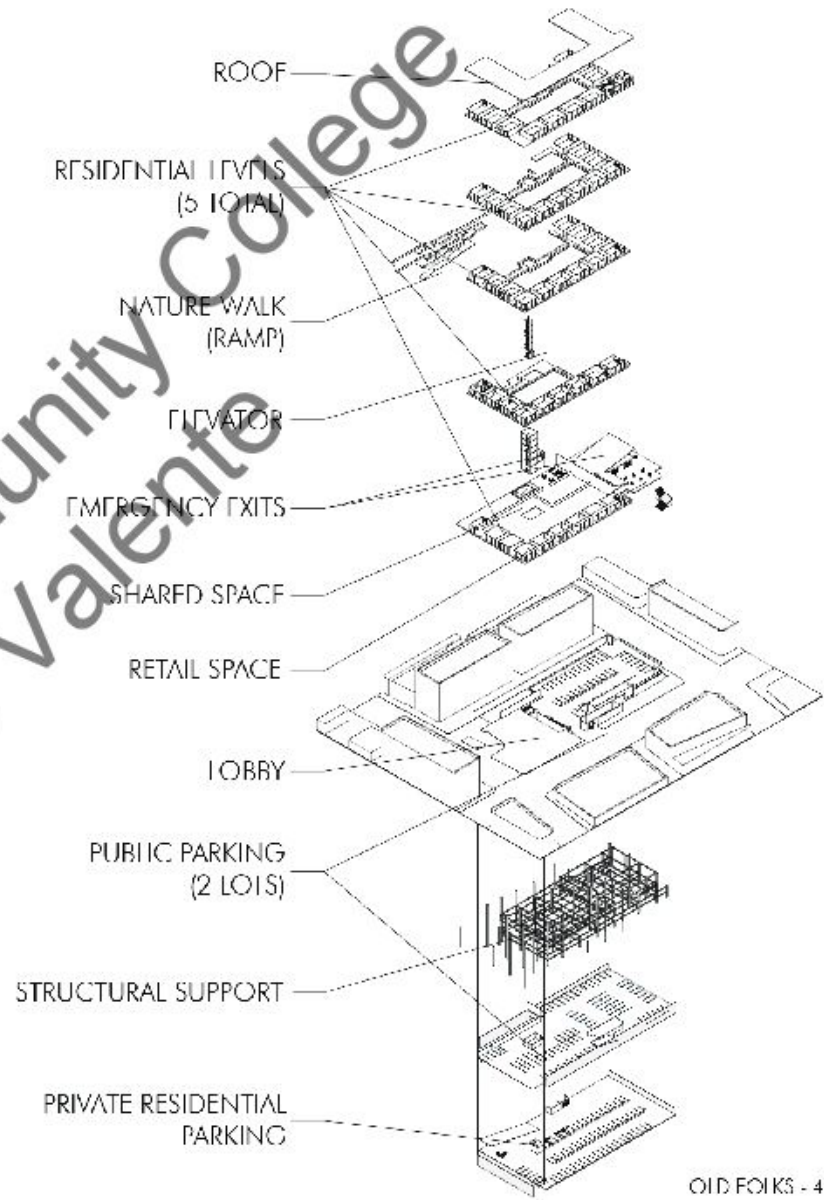
CIRCULATION DIAGRAM

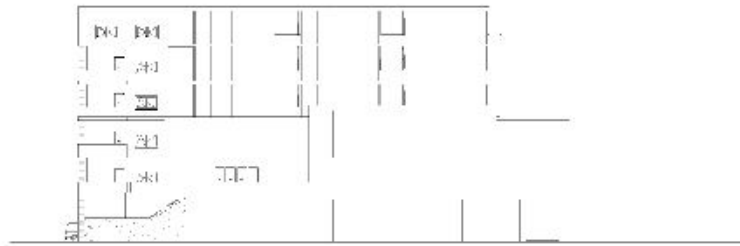


STRUCTURAL DIAGRAM

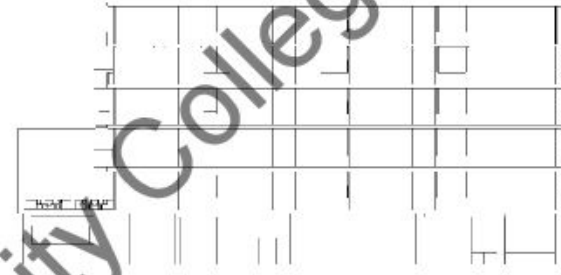


EXPLODED DIAGRAM





PROJECT WEST



PROJECT EAST



PROJECT SOUTH

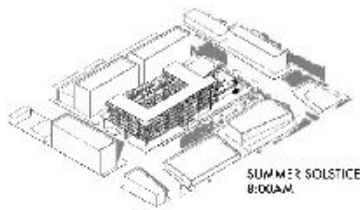


PROJECT NORTH

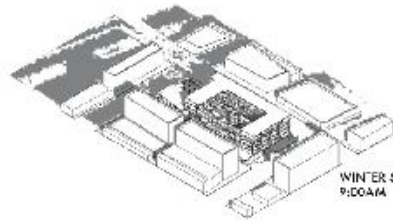
Glendale Community College
Marlo Valente

PERSPECTIVE SUNLIGHT DETAILS

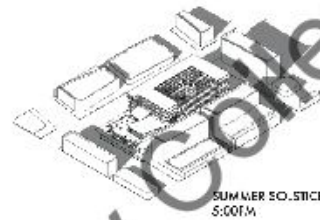
EVERY ROOM RECEIVES LIGHT FROM SUNRISE AND SUNSET.
SHADING PROVIDED DURING PEAK HEAT HOURS IN SUMMER.
SUN EXPOSURE PROVIDED DURING PEAK HOURS IN WINTER.



SUMMER SOLSTICE
8:00AM



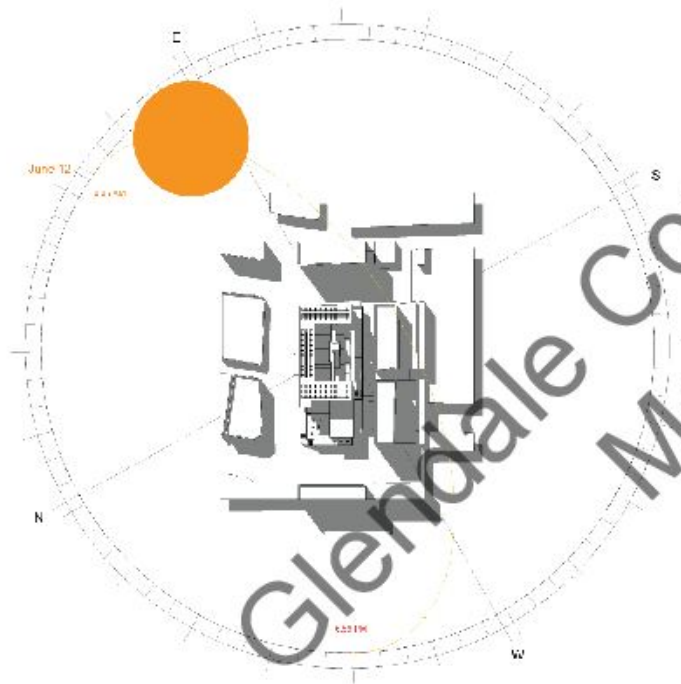
WINTER SOLSTICE
9:00AM



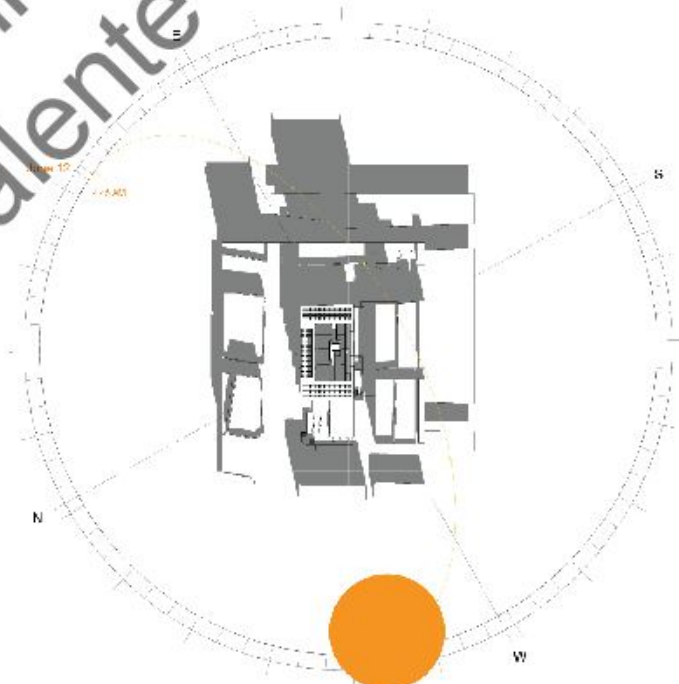
SUMMER SOLSTICE
5:00PM



WINTER SOLSTICE
5:00PM



June 12
7:30 AM



June 12
5:30 PM



Glendale Community College
Mario Valente College



Glendale Community College
Marlo Valente

little tokyo

Commercial Architectural Design I

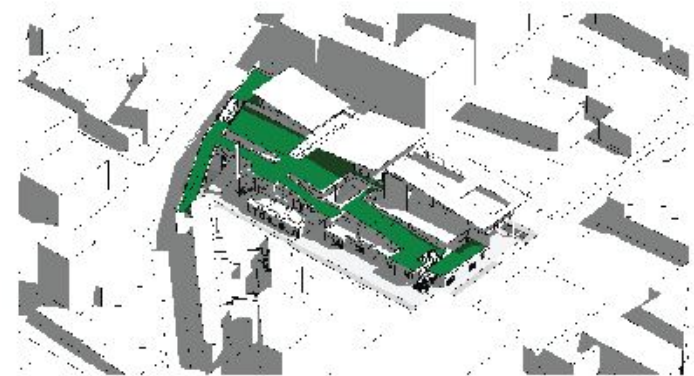
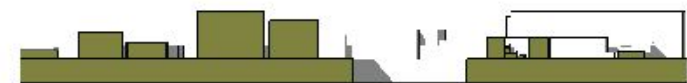
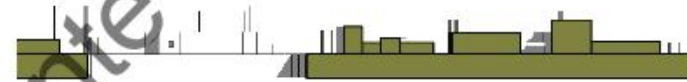
ARCH130

SPRING 2022

Located in Little Tokyo, this multi-use commercial building is a hub of activity and community. With its modern architecture and sleek design, the building houses a variety of businesses and services, making it a one-stop-shop for all your needs.



Project Location



Concept

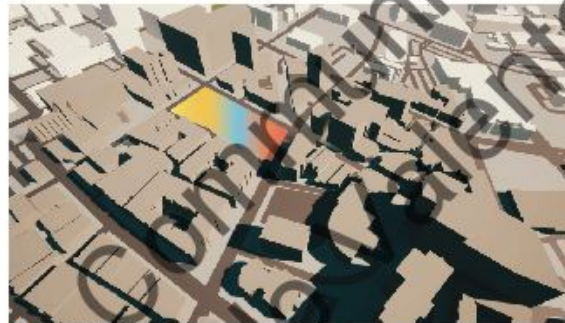
On the ground floor, you'll find a bustling retail space with an array of local vendors offering everything from traditional Japanese cuisine to American dishes. The second floor is home to a co-working space, providing entrepreneurs and freelancers with a collaborative and productive environment to work in.



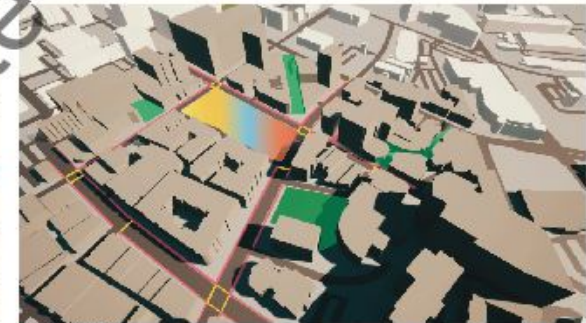
Existing Diagrams



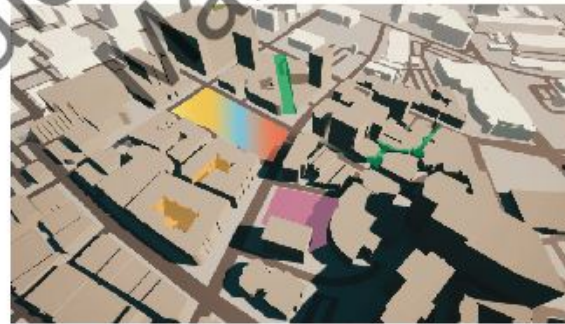
- RETAIL / APARTMENT
- OFFICE
- RETAIL
- MUSEUM / CIVIC
- OFFICE BUILDING
- PARKING STRUCTURE
- APARTMENT
- CHURCH / TEMPLE
- RESTAURANT
- LIBRARY



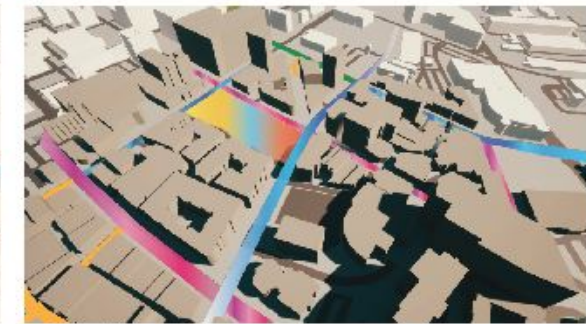
- PROJECT LOCATION



- SIDE WALK
- CROSS WALK
- PEDESTRIAN CONNECTION

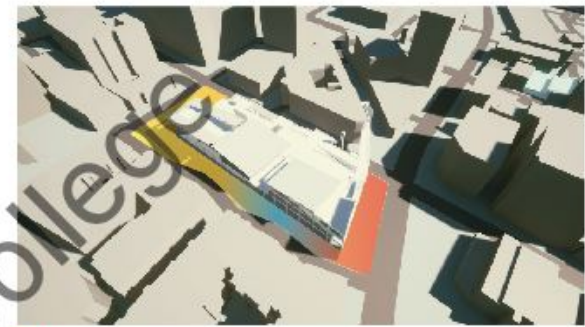


- RETAIL SHOPPING OPEN SPACE
- APARTMENT OPEN SPACE
- PLAZA



- TWO LANES
- THREE LANES
- FOUR LANES
- FIVE LANES

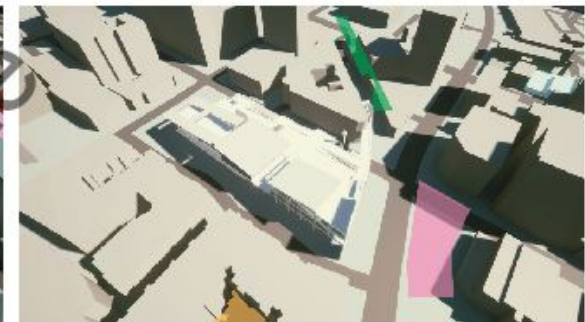
Proposed Design Diagrams



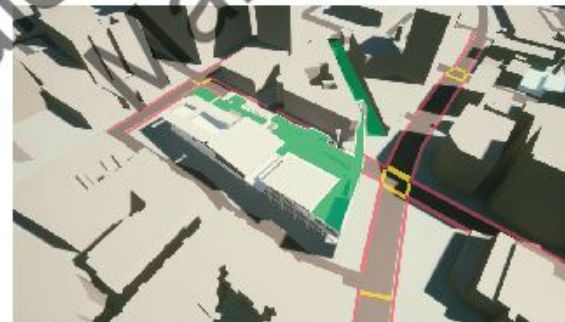
PROJECT LOCATION



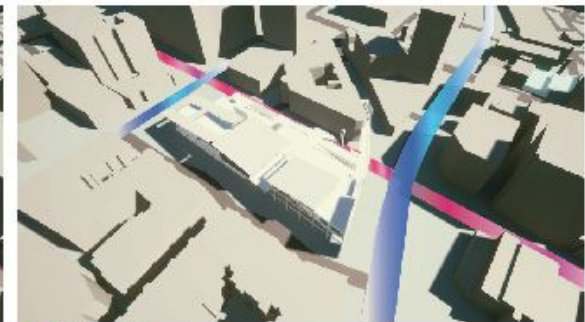
RED	RESIDENTIAL	PINK	PARKING STRUCTURE
ORANGE	TRADING	BROWN	ALARM
YELLOW	RETAIL	RED	COURT YARD
GREEN	MUSEUM / OFFICE	ORANGE	RESTAURANT
BLUE	OFFICE BUILDING	BROWN	LIBRARY



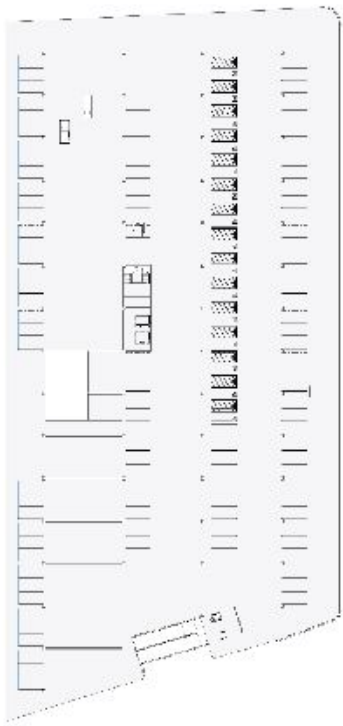
RETAIL SHOPPING OPEN SPACE
APARTMENT OPEN SPACE



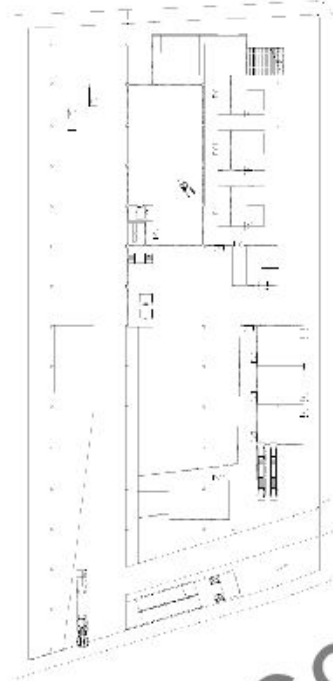
SIDWALK
CROSSWALK
PEDESTRIAN ACCESS



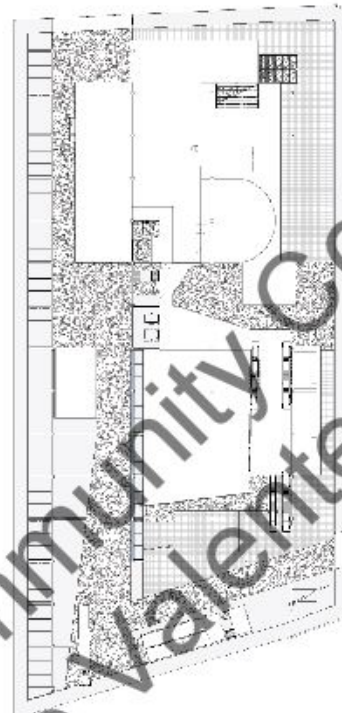
TWO LANES
THREE LANES
FOUR LANES
ONE LANE



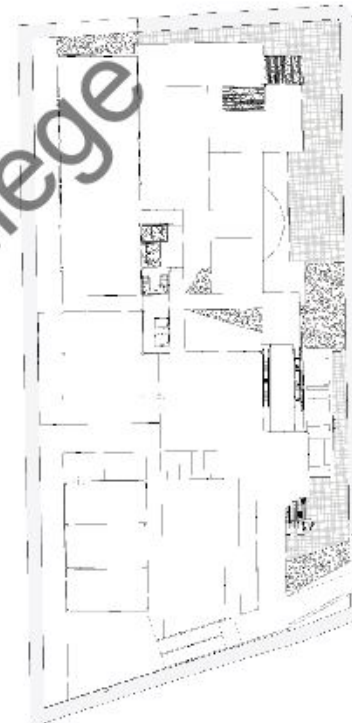
UNDERGROUND LEVEL 1



GROUND LEVEL

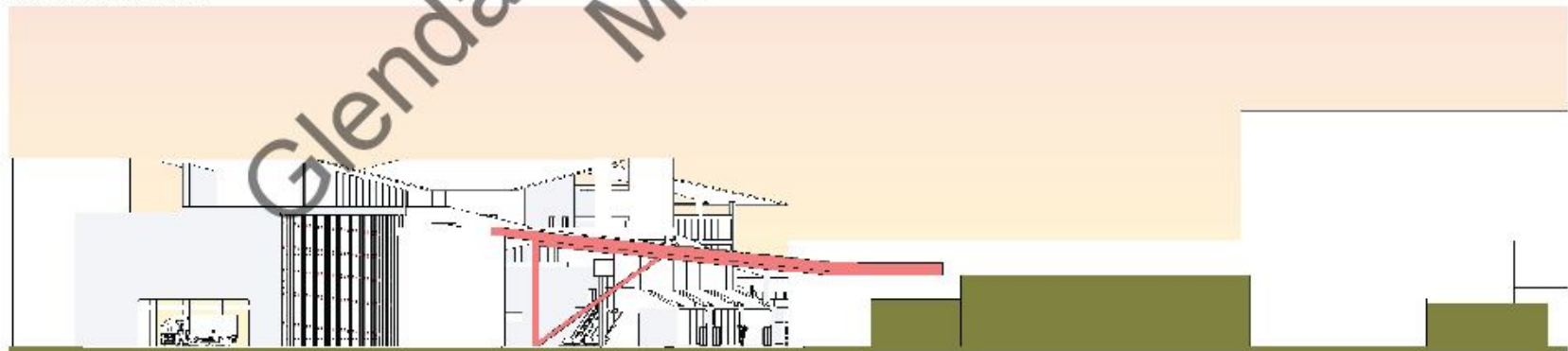


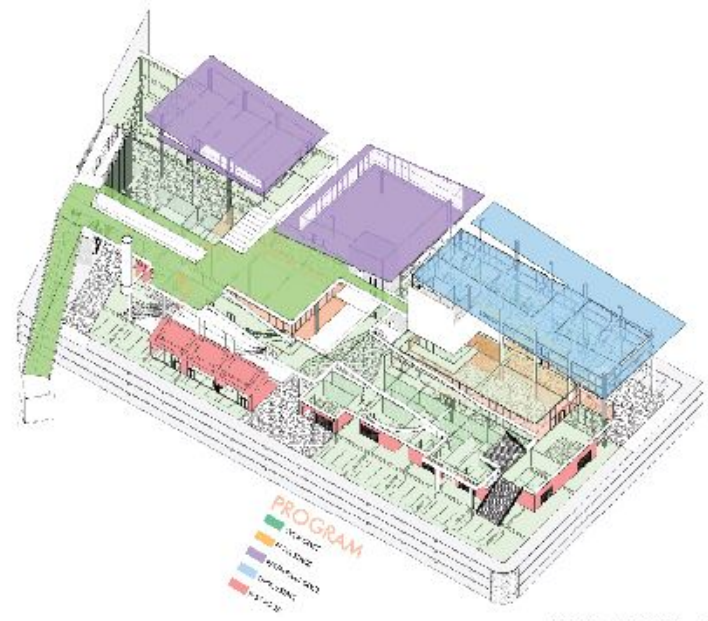
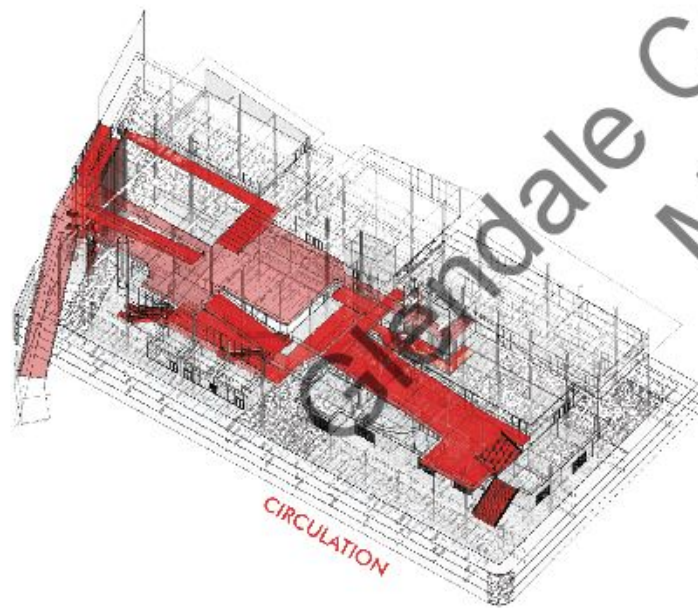
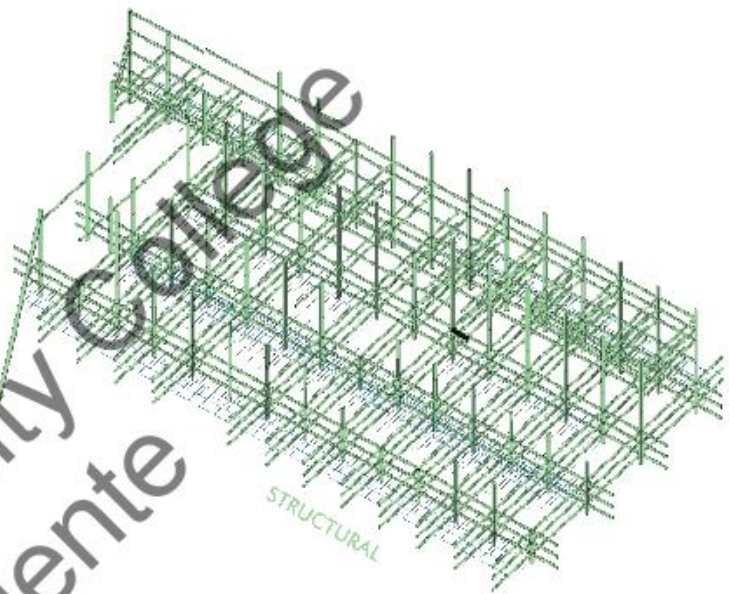
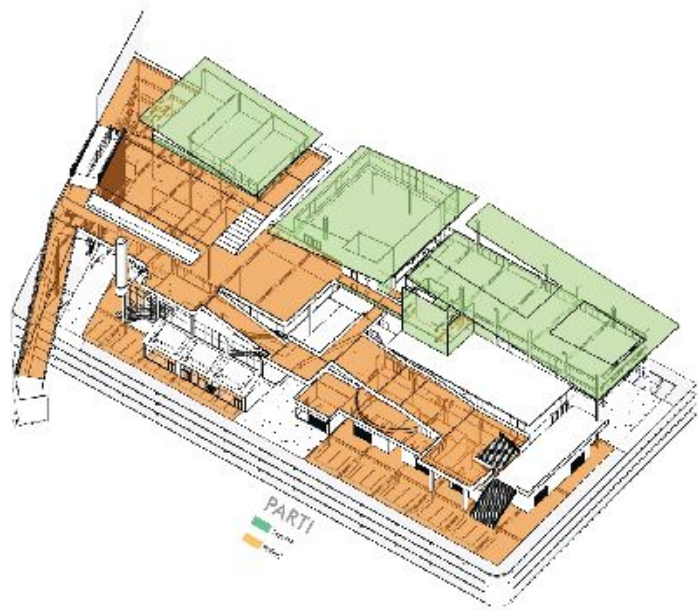
LEVEL 2



LEVEL 6

BRIDGE CONNECTION

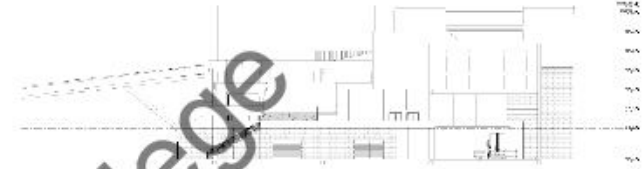




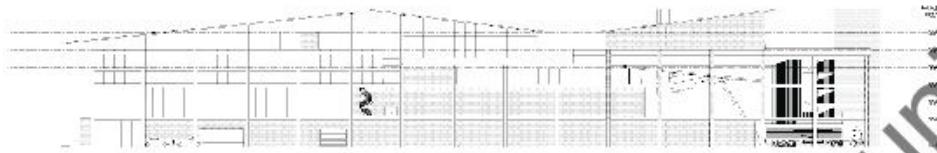
Glendale Community College
Marlo Valente



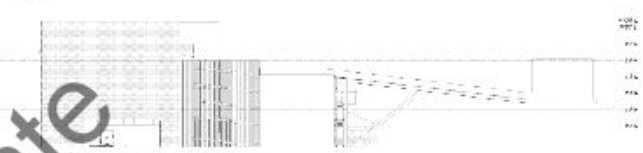
NORTH ELEVATION



WEST ELEVATION



SOUTH ELEVATION



EAST ELEVATION

Glendale Community College
Marlo Valente

LITTLE TOKYO





College

Glend

LITTLE TOKYO

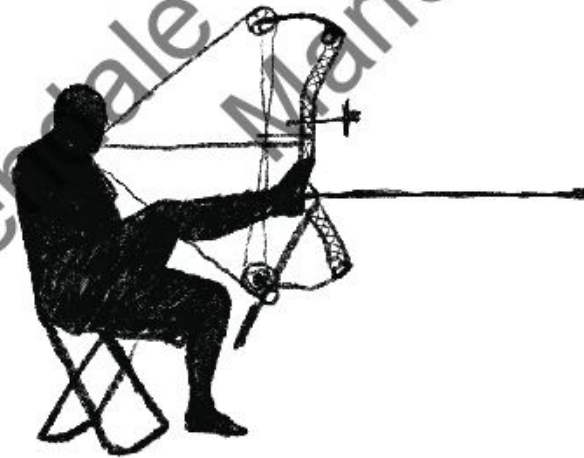
arrow path house

Residential Architectural Design I

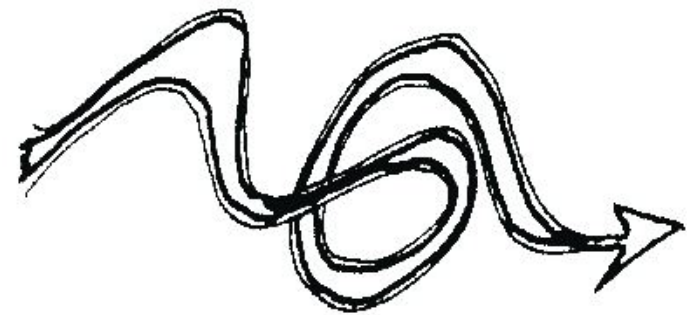
ARCH120

FALL 2021

The path house is a residential house designed for Matt Stutzman, a paralympic archer, is an embodiment of his inspiring journey. The three bedrooms within the house are thoughtfully designed to represent different stages of his story, showcasing his perseverance and dedication. Additionally, the kitchen pays tribute to Dr. Guttman, who played a significant role in Stutzman's life. This house is not only a comfortable and functional space but also a celebration of Stutzman's remarkable achievements and the people who have supported him along the way.



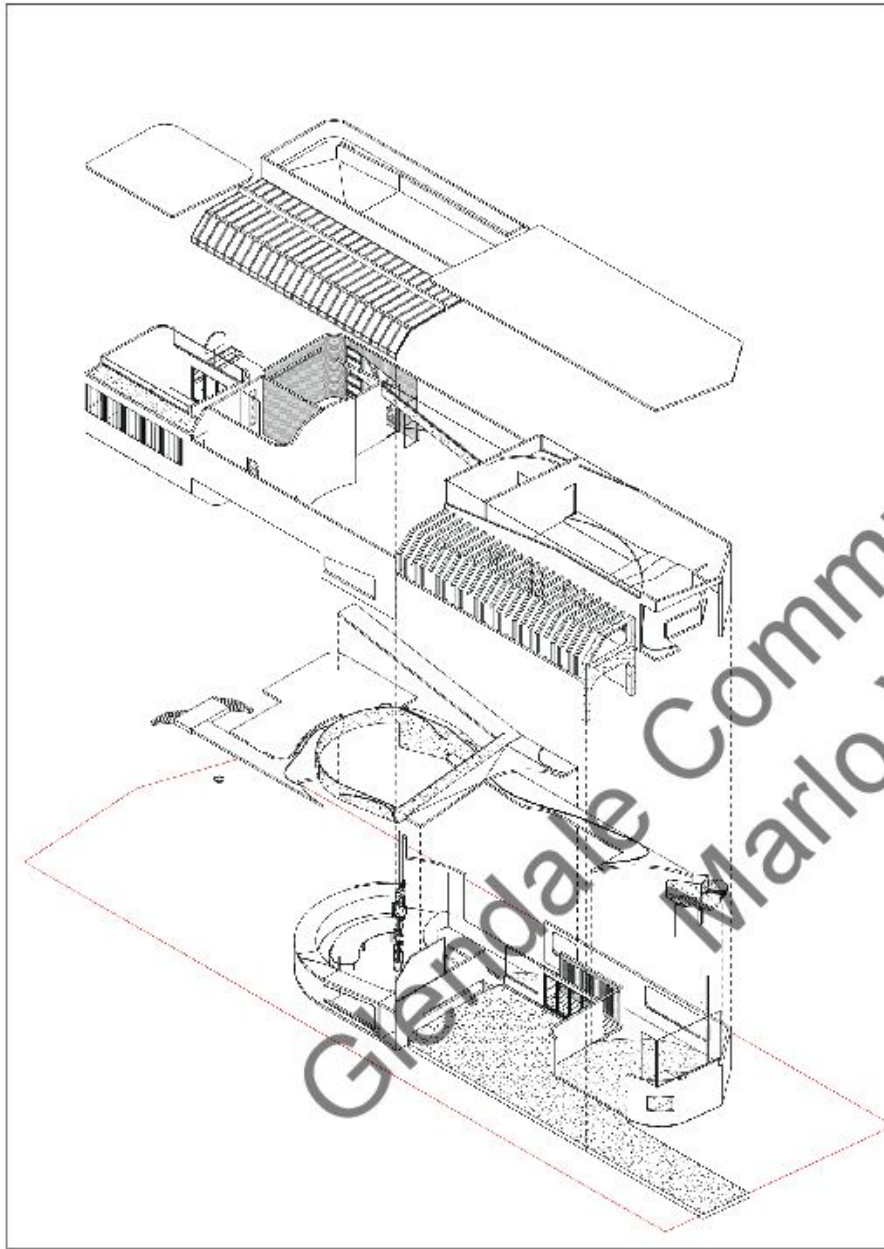
Stutzman Sketch



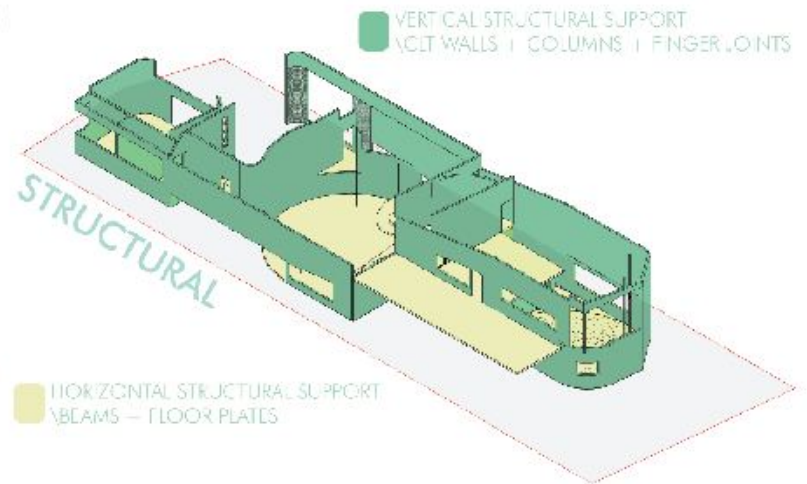
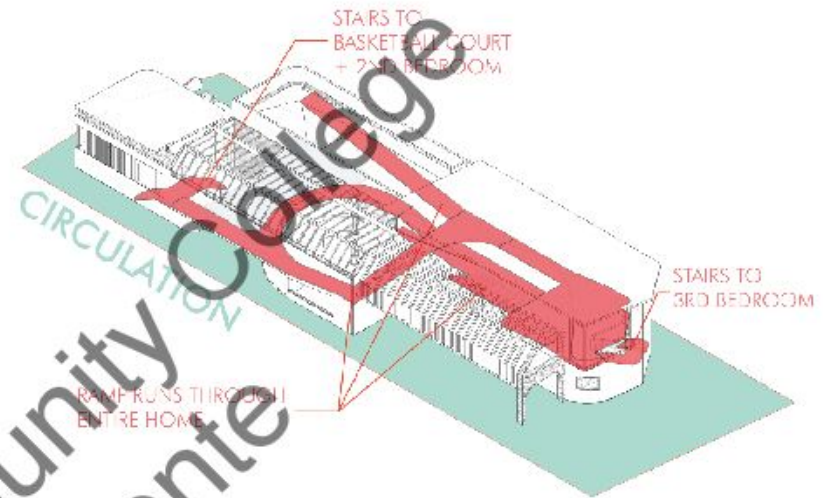
Early Concept Sketches

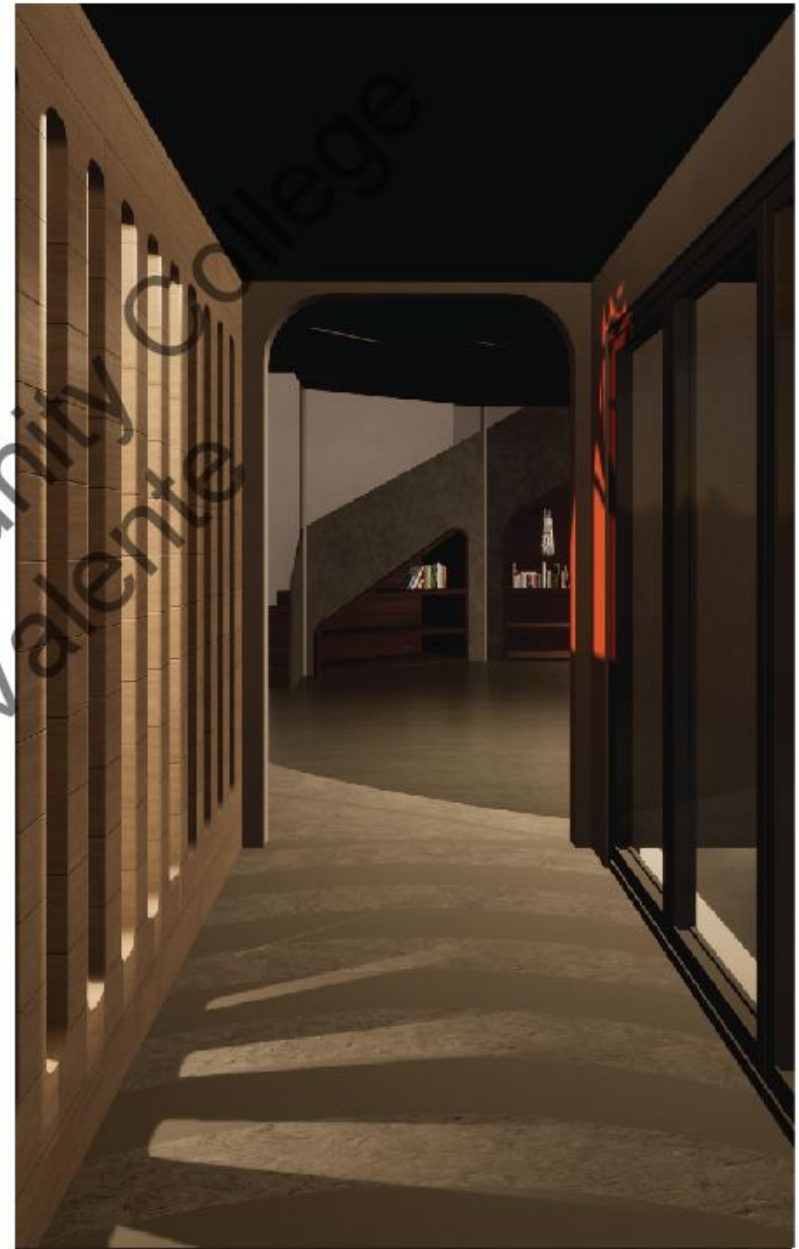
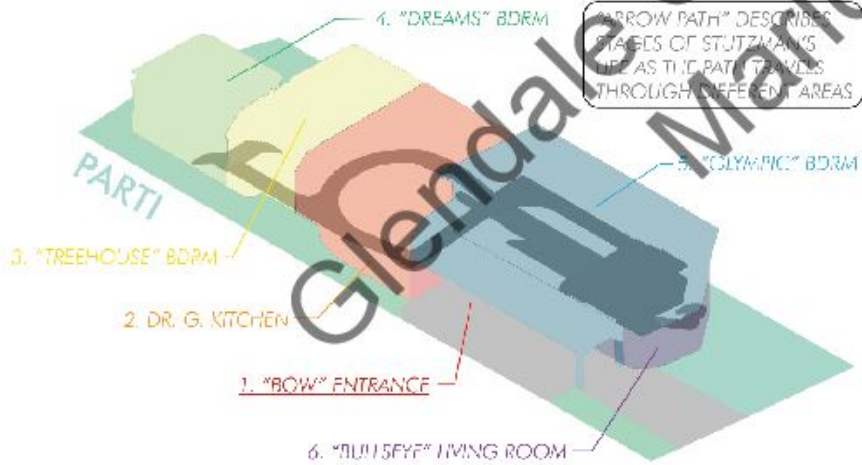
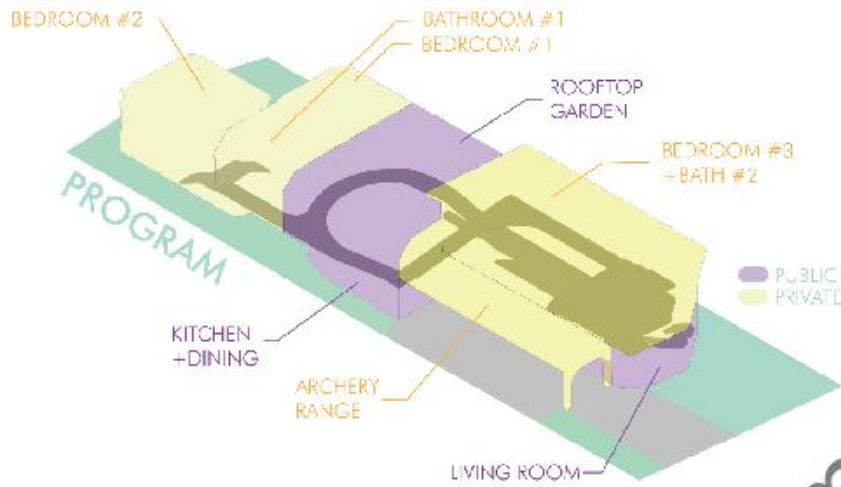
Glendale Community College
Marlo Valente



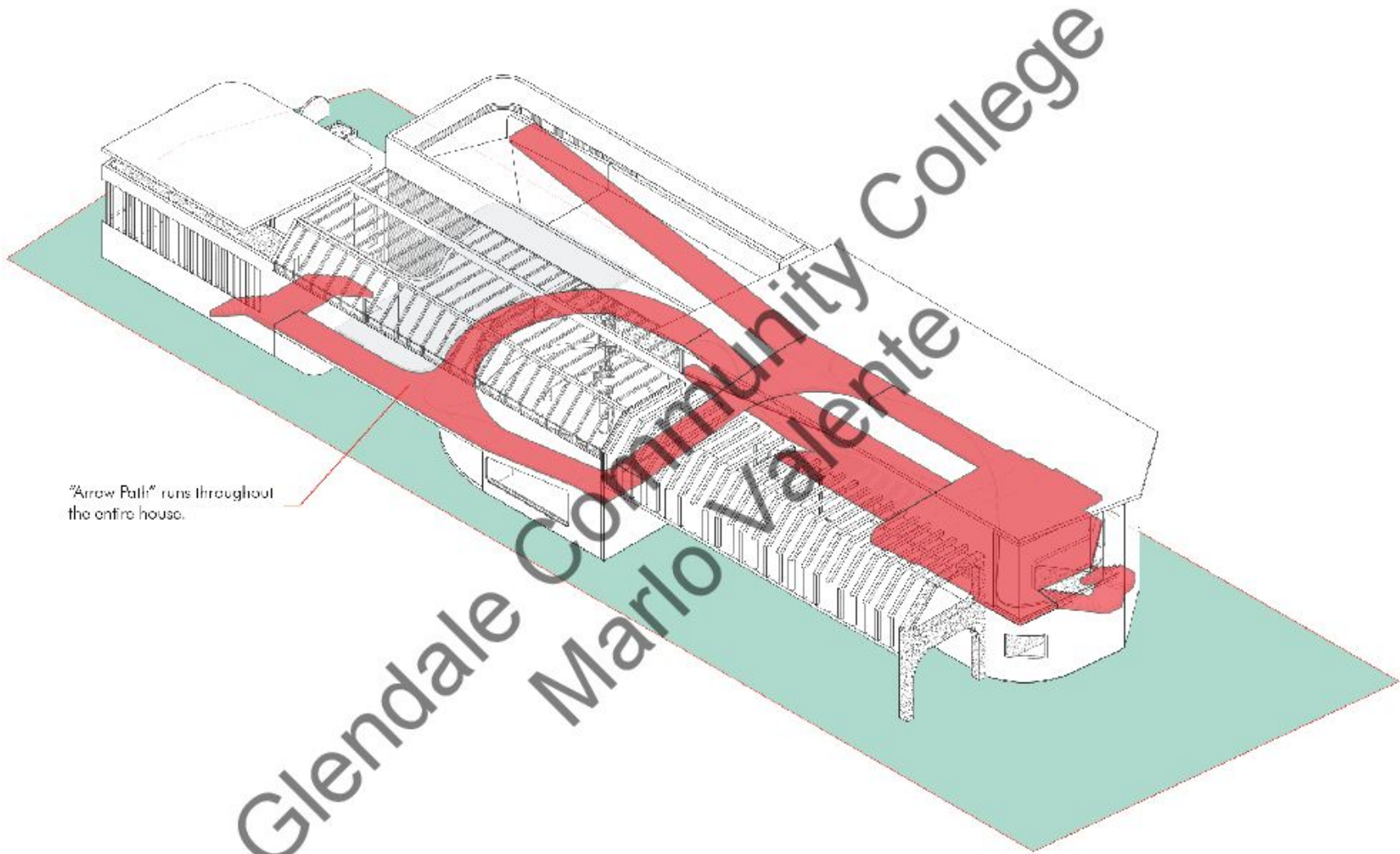


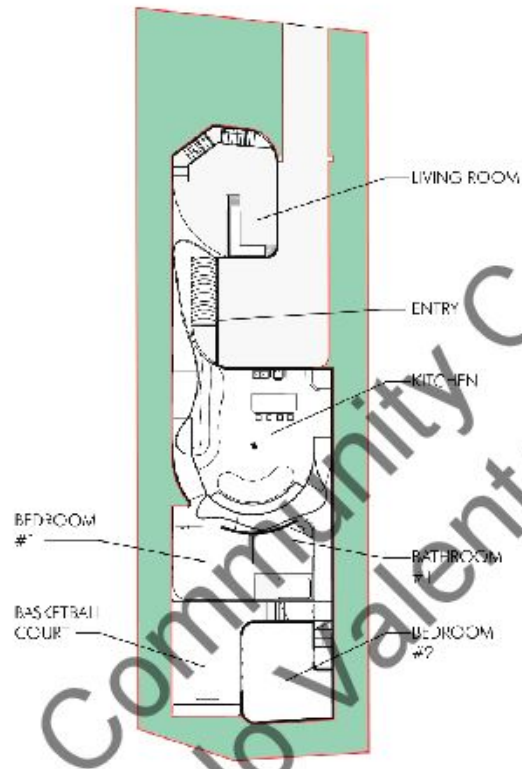
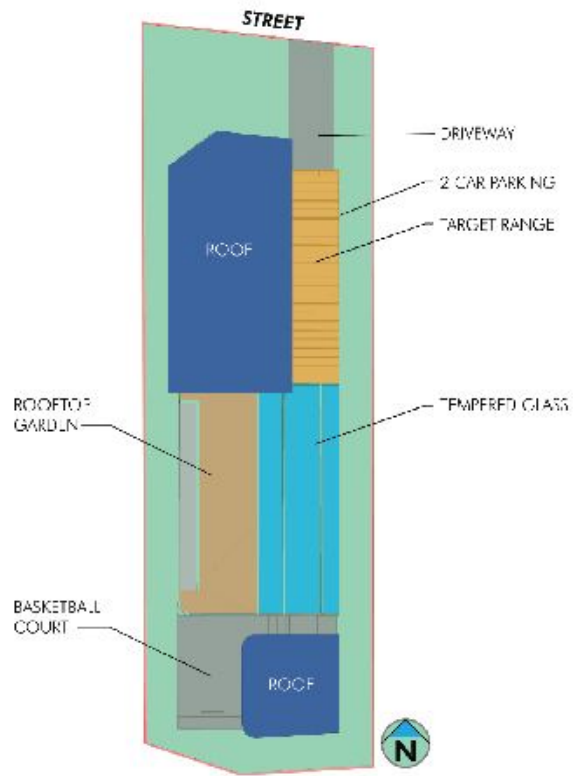
Exploded Diagram



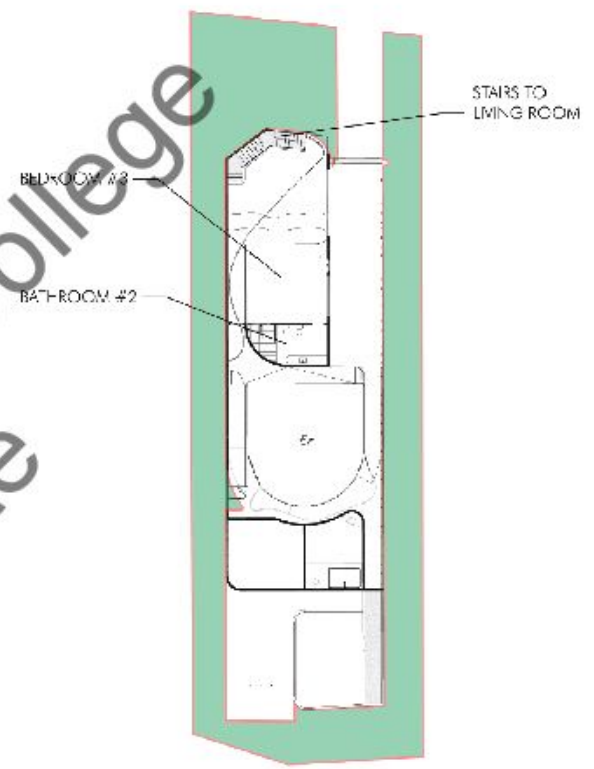


3D render of entrance
ARROW PATH - 4

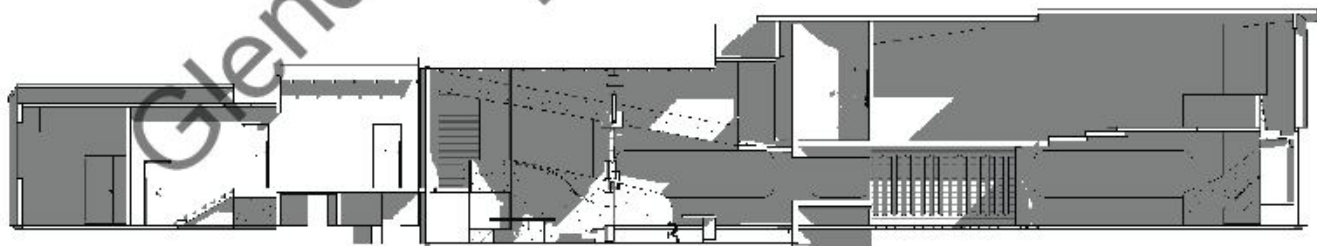




GROUND LEVEL FLOOR PLAN
SCALE: 1/8"=1'-0"

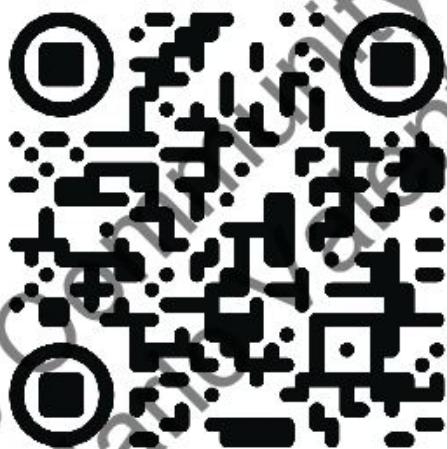


UPPER LEVEL FLOOR PLAN
SCALE: 1/8"=1'-0"



GROUND LEVEL
1"=10'

Glendale Community College



path house
Video Tour



Glendale Community College
Marlo Valente

cccacp competition '23

Design Theme Description:

Life seems to be moving more and more quickly. Society is shifting in more and more insane directions. Partisan vitriol, racial conflict, violations of social justice, economic disparity, physical violence, gun violence, urban development pressures, and general malaise about the future are just a few of the issues that have caused societal and community conflicts to increase. Communications via the media and the internet cause almost instantaneous broadcasting of opinions of all sorts, often, ill-informed and shared only by people of like mind. This further divides our society where lack of discussion and deep reflection about important issues prevail. As an antidote to the divisions that are threatening to break our society apart, this 2023 CCCAP Student Design Competition proposes to explore ideas about dialogue, conversation, and intellectual exchange of ideas in the design of a Center for Conversation that will be associated with and administered by the local university in a town that is experiencing social conflicts. The design should provide places for individual contemplation and for group discussion to heal our society and knit it together to create community and peace. Community is regarded by some as a collective consciousness. Community as a concept does not mean that everyone shares the same opinions, but it does mean that people are willing to come together to find ways to live civilly together.

Glendale Community College
Marlo Valente

A CENTER FOR CONVERSATION

2023-08

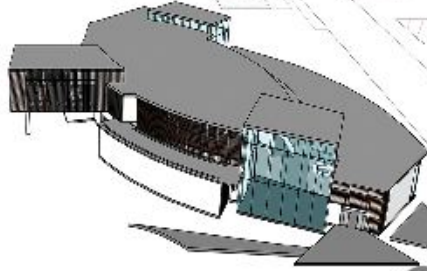
FOSTERING CONNECTIONS & CATALYZING CHANGE



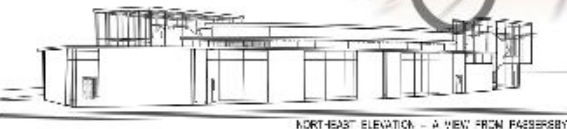
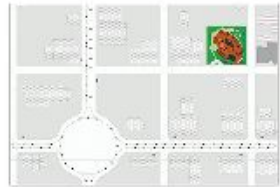
FAITH IN THESE AROUND US CAN FEEL HARD TO FIND BY IN THIS CLIMATE OF MISTRUST AND MISINFORMATION. THIS CENTER FOR CONVERSATION WILL CREATE A JUDGMENT-FREE ZONE WHERE CITIZENS CAN ENGAGE IN OPEN DISCUSSION THROUGH COMMONS OF THE MIND. THE DESIGN CONCEPT FOR THE CENTER FOR CONVERSATION WAS INSPIRED BY FOUR CRUCIAL POINTS: ENCOURAGE UNDERSTANDING, BUILD A CULTURE OF CONFIDENCE, PROMOTE COLLABORATION, AND CULTIVATE POSITIVE CHANGE.

WHILE THE BUILDING IS INTENTIONALLY OUTSIDER FROM THE TRADITIONAL FORMS OF THE LOCALITY, IT IS DESIGNED TO BE A WARMING OPEN-SPACE. IT IS INTENDED TO WELCOME ALL MEMBERS OF THE COMMUNITY, FROM ALL WALKS OF LIFE. THE MODERN DESIGN SYMBOLIZE THE BREAKING OF NEW GROUND TOGETHER, LEADING TO A REVISED SENSE OF UNITY AND SHARED PURPOSE.

AS THE FOUNDATIONS ARE KEENLY A PARTICIPANT IN PRODUCTIVE DISCUSSIONS, TRUST WILL BE ESTABLISHED, FOSTERING CONNECTIONS AND A COMMUNAL EXISTENCE.



VIEW FROM LOBBY TO THE HIGH-CEILINGED INTERIOR, W/LOOKING COMMUNITY MEMBERS IN.



NORTHEAST ELEVATION - A VIEW FROM PASSERSBY



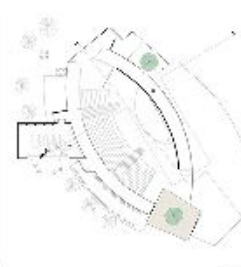
SOUTH-FACING ELEVATION - PEERING INTO THE OUTDOOR PLAZA



THE VESTIBULE ARTICULATED WITH AN OPEN SPACE FOR THE COMMUNITY MEMBERS TO GATHER TOGETHER TO DISCUSS.



1ST LEVEL FLOOR PLAN



2ND LEVEL FLOOR PLAN



PERSPECTIVE TOP VIEW

100-PLAN LEGEND

1. ENTRY OFF
2. VESTIBULE
3. LOBBY
4. RECEPTION
5. DIRECTOR'S OFFICE
6. MEETING ROOMS
7. NICHE
8. STORAGE
9. MEDICAL ROOM
10. RESTROOM
11. HALLWAY
12. GALLERY
13. INFORMATION PLAZA
14. OUTDOOR PLAZA
15. OUTDOOR GARDEN
16. INDOOR GARDEN & MEDICATION ZONE
17. RAMP TO LEVEL 2
18. LIBRARY



THE LIBRARY ON LEVEL 2, A PERFECT SPACE TO READ, WORK, AND DISCOVER NEW THINGS

granada hills house

Advanced Interior Design
ARCH 142
SPRING 2022

Project Details:

LOCATION (SUBURB) :

12028 SUSAN DR.
GRANADA HILLS, CA 91344

TYPE OF HOME: TWO STORY

STYLE OF HOME: JAPANDI

WORKING HABITS: OCCASIONALLY WORKS AT HOME

LEISURE HABITS: GARDENING TV READING MUSIC BAKING

COLLECTIONS: BOOKS ART

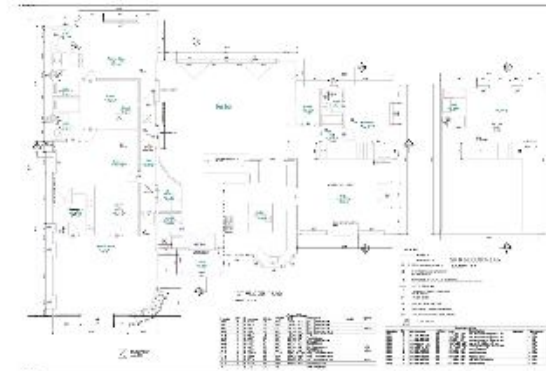
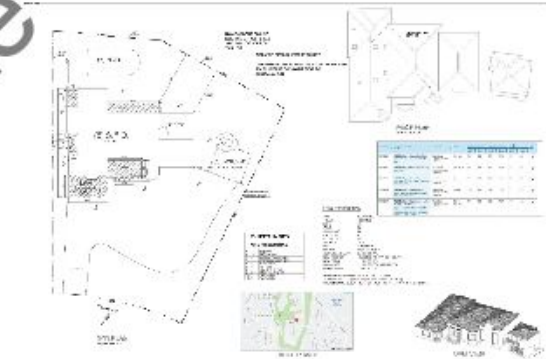
ROOM NEEDS + DIMENSIONS

LIVING ROOM
DINING ROOM
KITCHEN
OPEN PLAN
HOME OFFICE
STUDY
BATHROOM IN ALL BEDROOMS

FURNITURE STYLE: CONTEMPORARY

ENTERTAINING: INFORMAL DINNERS COCKTAIL PARTIES BARBEQUE

COLORS/PATTERNS: TINTS (LIGHT) COOL COLORS EARTH TONES

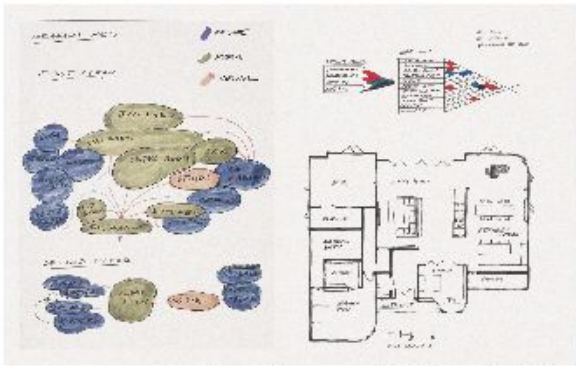


Site Constraints

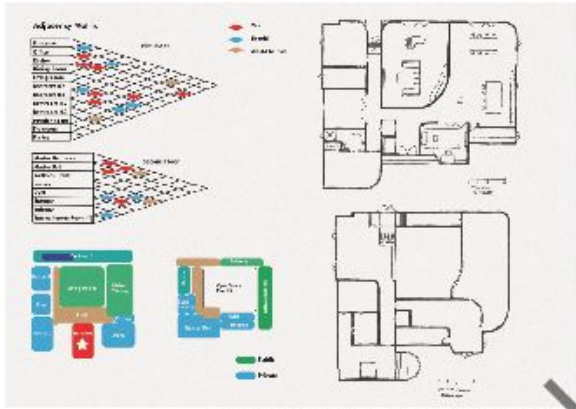


Granada Hills House
Video Tour





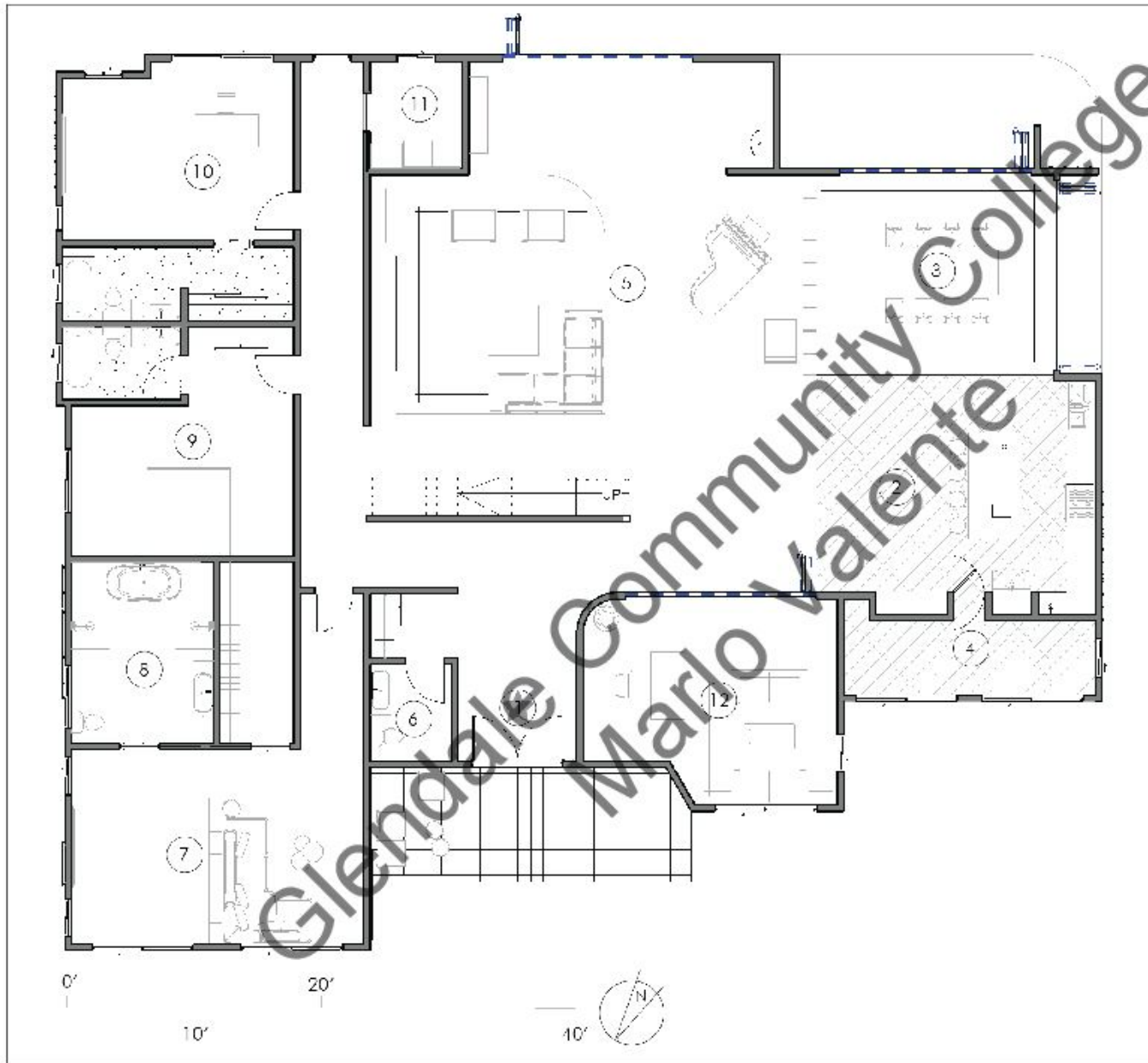
Bubble Diagram | Initial Floorplan Sketch



Matrix Diagram | Initial Floorplan Ideas



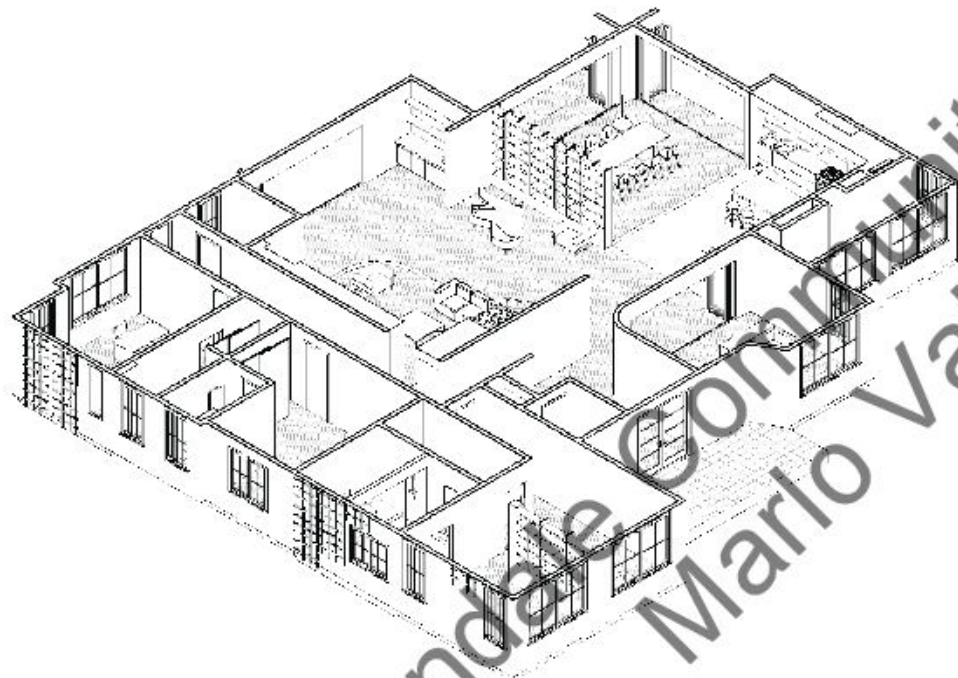
Initial Perspective Sketch



First Floor - Floor Plan

Legend

- 1 - Entrance
- 2 - Kitchen
- 3 - Dining Room
- 4 - Pantry
- 5 - Living Room
- 6 - Powder Room
- 7 - Master Bedroom
- 8 - Master Bathroom
- 9 - Bedroom One
- 10 - Bedroom Two
- 11 - Laundry Room
- 12 - Office / Study



Orthographic Perspective of Floor Plan



3D Render of Dining Room



3D Render of Dining Room



3D Render of Kitchen



3D Render of Bedroom



3D Render of Master Bath



3D Render of Master Bath

