

# ASEA

## American Society of Engineers and Architects Glendale Community College Chapter Newsletter

05-27-2010, article by Paul Chiu

*ASEA (per GCC website):*

American Society of Engineers and Architects is a non-profit professional society dedicated to the interaction of all disciplines in the fields of architecture, engineering, and the allied arts. As part of its mission, ASEA is committed to supporting deserving students who might otherwise be unable to meet their educational and professional goals in these fields. During the past thirty years, ASEA has sponsored student chapters at most of the community colleges in Southern California. ASEA offers funding for student programs, scholarships, field trips, lectures, competitions, summer jobs, internships, and various educational events. In many instances, ASEA provides students with their first interaction with practicing professionals and offers a realistic introduction to the nature of such a career choice.

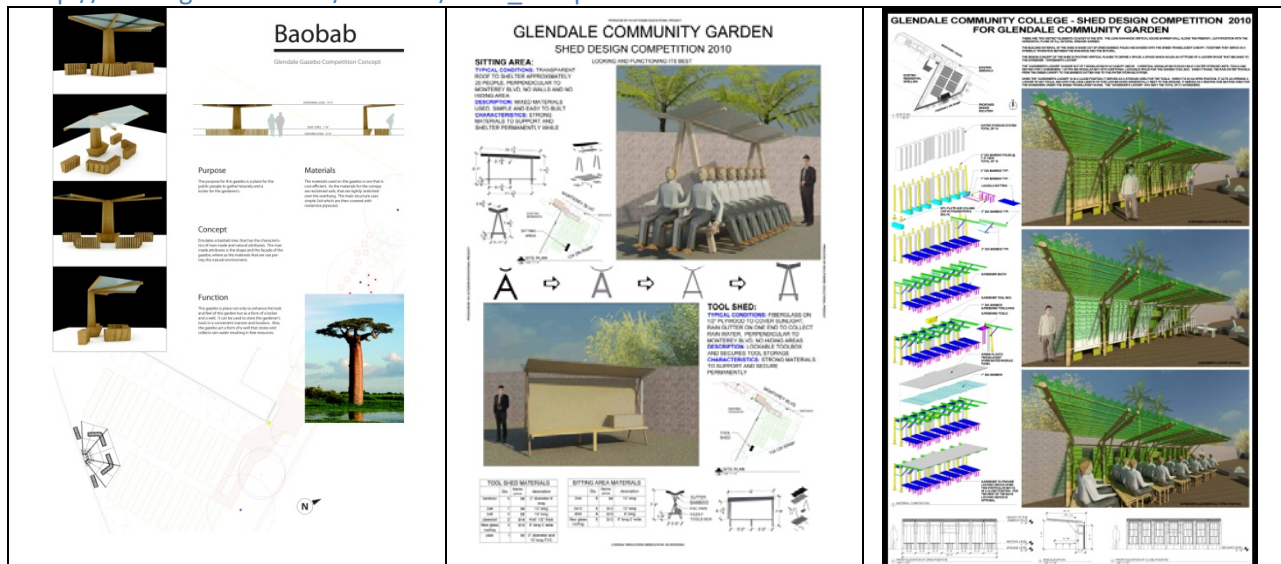
*ASEA GCC Chapter:*

Our ASEA GCC Chapter is in the process of innovating and rebuilding itself. At the beginning of winter 2009, the ASEA GCC Chapter had no members other than two faculty advisors, Mr. Dave Martin, and Mr. Paul Chiu. Soon after the completion of two major architectural competitions - the Shed Design Competition, and the Table Decoration Design Competition, the fate of the GCC Chapter has taken a much brighter turn, especially after capturing first place in the Table Decoration Design Competition. As a result the chapter has a significant increase of its members, popularity and reputation.

*Shed Design Competition Winter 2009:*

During the winter semester of 2009, GCC collaborated with Glendale Community Garden to organize "The Shed Design Competition". The prize of this contest was to have the award-winning design built on Glendale Community Garden. There were six teams participated, and three made it to the final. The winning project and the runner-up can be viewed at ASEA GCC website.

[http://vision.glendale.edu/dmartin/shed\\_comp.htm](http://vision.glendale.edu/dmartin/shed_comp.htm)



# ASEA

## American Society of Engineers and Architects Glendale Community College Chapter Newsletter

05-27-2010, article by Paul Chiu

---

### *ASEA Design Competition announcement:*

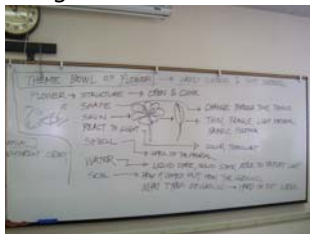
On March 28<sup>th</sup> 2010, ASEA announced a table decoration design competition, which all the entries from various community colleges and high schools would be displayed during the ASEA 47<sup>th</sup> annual Awards Banquet of 2010. Every year, the Awards Banquet has its own theme for the centerpiece. The theme for 2010 was **“A bowl of flower.”**

After the Spring break, on April 19<sup>th</sup>, 2010, the first and only flyer for this competition created by Mr. Chiu posted on campus followed by the ASEA Design Meeting on Friday April 23<sup>th</sup> at 2:30 PM, with 5 students interested in joining the competition, Celine Issagholianhavai, Narek Hambardzumyan, Gordon Au, Vincent Ang, and Argine Vardanyan, all are from Mr. Chiu’s Arch 102 and Arch 120 classes.



(From left) Gordon Au, ArgineVardanyan, Vincent Ang, Celine Issagholianhavai, Paul Chiu (slave driver), and Narek Hambardzumyan

### *The Design and Construction Process:*



The analysis of the theme – a Bowl of Flower



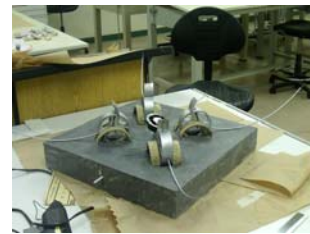
The detail of the copper skin



Structure is at closed position



Celine is nailing the copper pieces together



Structure is at opened position

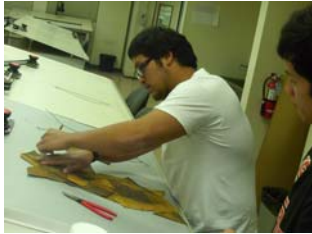


Argine is tailoring the copper skin

# ASEA

## American Society of Engineers and Architects Glendale Community College Chapter Newsletter

05-27-2010, article by Paul Chiu



Vincent is making the skin's template



Vincent and Gordon are putting the skin on the structure



We need an extra pair of hands



Work! Work! Work! Work! Work! Work!



I am Pablo Picasso.....



An Alien ship has landed outside Dave's office



Our version of the movie ID-4



Argine is putting the final touch



It is 2:30 in the morning. We miss home.



Project finished May 23, 2010, 2:30AM



Ok it can open, so can we go home?



Banquet night, SHOW TIME.....



Judging ..... Judging.....Judging.....



LOOK.....



Rio Hondo College



# ASEA

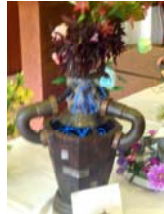
## American Society of Engineers and Architects Glendale Community College Chapter Newsletter

05-27-2010, article by Paul Chiu

---



Fullerton College



I think this is from East Los Angeles College



Cerritos College



Alhambra high School



California High School



The winner is Glendale Community College



Current Location – Display case at Advanced Technology Building



The mechanism still works.